

# 1 Clarks Mews 10c Hemnall Street

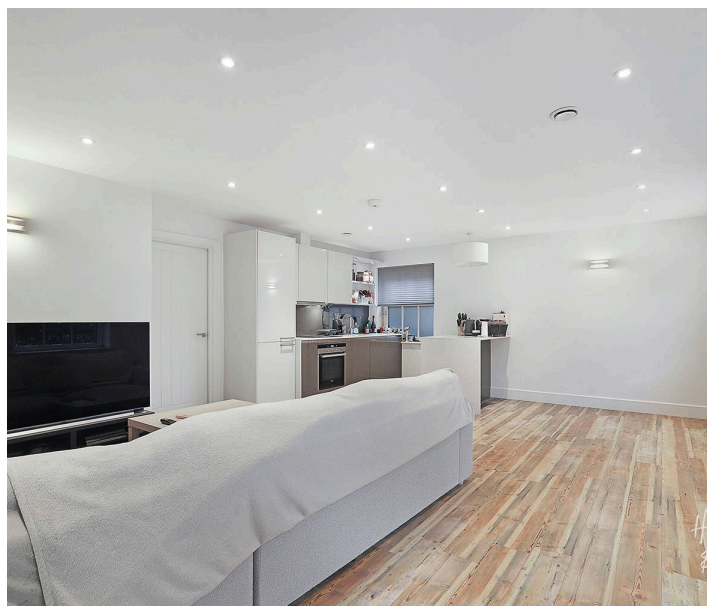
Epping, Essex

Offers Over £400,000

Council Tax band: TBD

Tenure: Leasehold

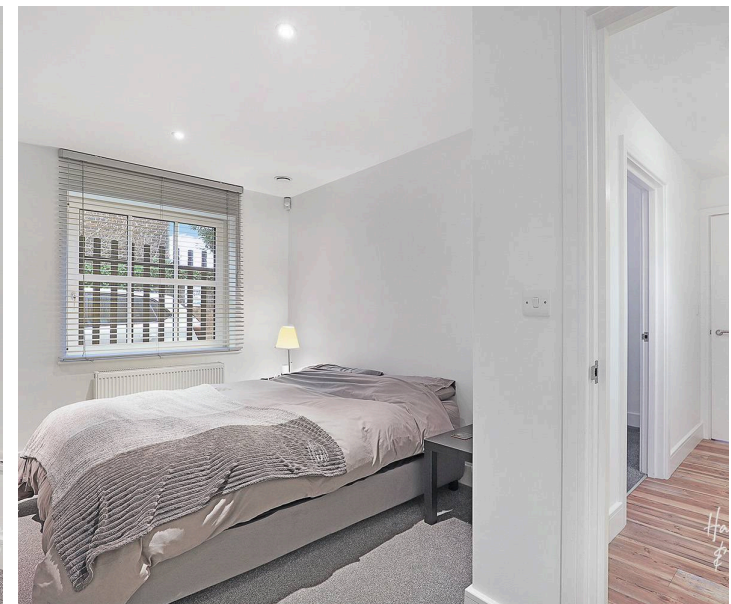
- Two bedroom ground floor apartment
- Walking distance to Epping station and high street
- Open plan kitchen / living area
- Allocated covered parking
- Chain free
- Beautiful interiors throughout
- Lease in excess of 110 years

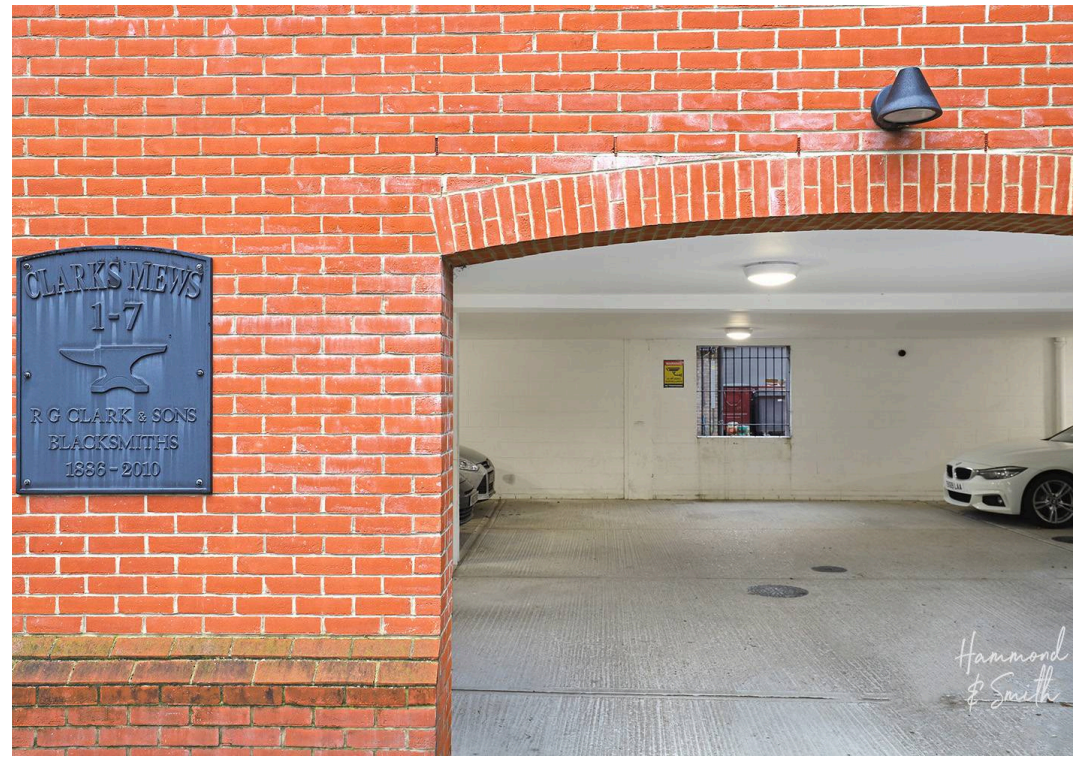


A super sleek two bedroom chain free ground floor apartment, nestled right in the heart of Epping. Literally steps away from the high street and a short stroll to the station, this is a super place to live and call home.

Full of kerb appeal with covered allocated parking, Clarks Mews is a collection of beautifully developed apartments with high spec interiors throughout. Whether you're flying solo, looking for your first family home, downsizing or flat sharing - this apartment has a layout to suit all. The two double bedrooms sit parallel beside the hallway, with the primary including its own dressing area and sliding fitted wardrobes. Taking centre stage, the open plan kitchen / living area is super chic, flooded with light and complete underfloor heating. Beautifully formed to include integrated appliances, plenty of storage and a breakfast bar for two, the sleek kitchen seamlessly fits into the room. Simply pop the kettle on, jump on the sofa and lounge away in front of your favourite box set. Nights at home have never felt so good! Completing the home, the bathroom is equally chic, fully tiled with handy storage shelving.

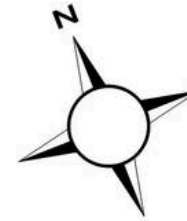
CMI6s charms need little introduction but if you're new to the area, Clarks Mews is perfectly placed along Hemnall Street and moments from the Epping much-loved high street. With plenty of restaurants, cafes, shops and food halls, along with beautiful forest walks nearby - there is so much to see, do and enjoy here. If you are looking for a great place to love, live and call home that will be a true investment for life, then look no further.





# Ground Floor

Approx. 67.8 sq. metres (729.6 sq. feet)



Total area: approx. 67.8 sq. metres (729.6 sq. feet)