

Offices to Let

Riverside House

Goldcrest Way, Newburn, Newcastle upon Tyne **NE15 8NY**

Super energy efficient
building totalling **48,327 sq ft**



Riverside House

- + Commissionaire service
- + 24-hour access
- + Flexible lease terms
- + Well-located close to A1(M)
- + 3 minute drive to Metrocentre

Premium specification workspaces in an enviable riverside location.



Riverside House

Location

Newburn Riverside is only a minutes' drive away from the A1 and is just three minutes from the Metrocentre where rail links are available.



The Waterfront is a modern business park in a unique location on the banks of the River Tyne. With its riverside walks, attractive landscaping and contemporary works of art, it is set to benchmark new standards for the workplace and is an unrivalled and enviable location.

Riverside House

Riverside House

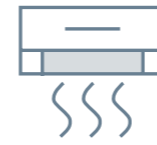
Description

Riverside House is finished to a high specification and has achieved the highest BREEM rating of 'Excellent'. The property benefits from on-site car parking spaces as well as excellent public transport links.

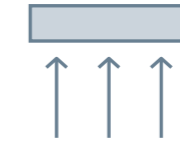
Newburn Riverside benefits from a high-speed business internet connection and access to Next Generation Network with bandwidth from 100 Mbit/s through to 10 Gbit/s.



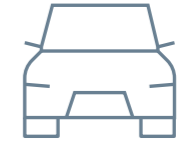
Specification



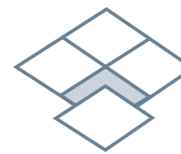
Air conditioning



Raised access flooring



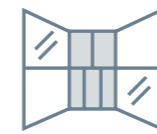
210 car parking spaces



Suspended ceiling



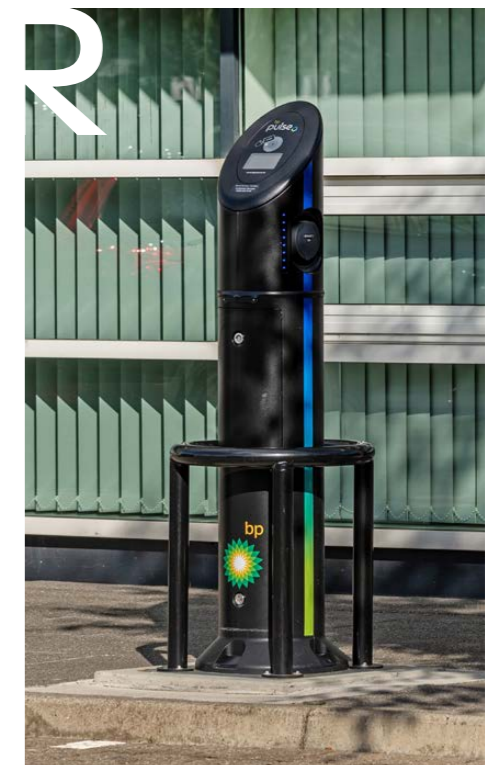
EPC rating - B



Central atrium area



High speed business internet



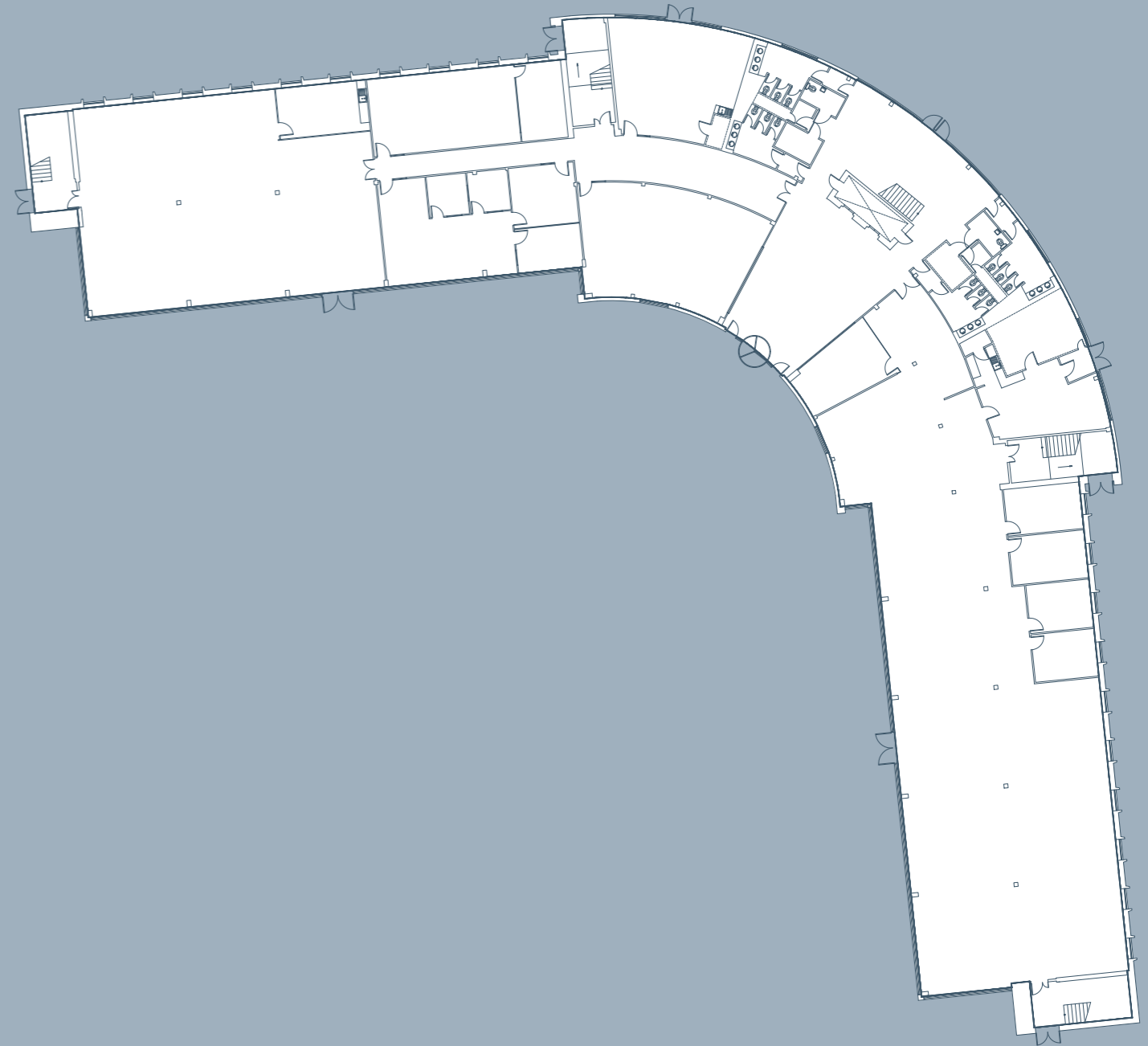
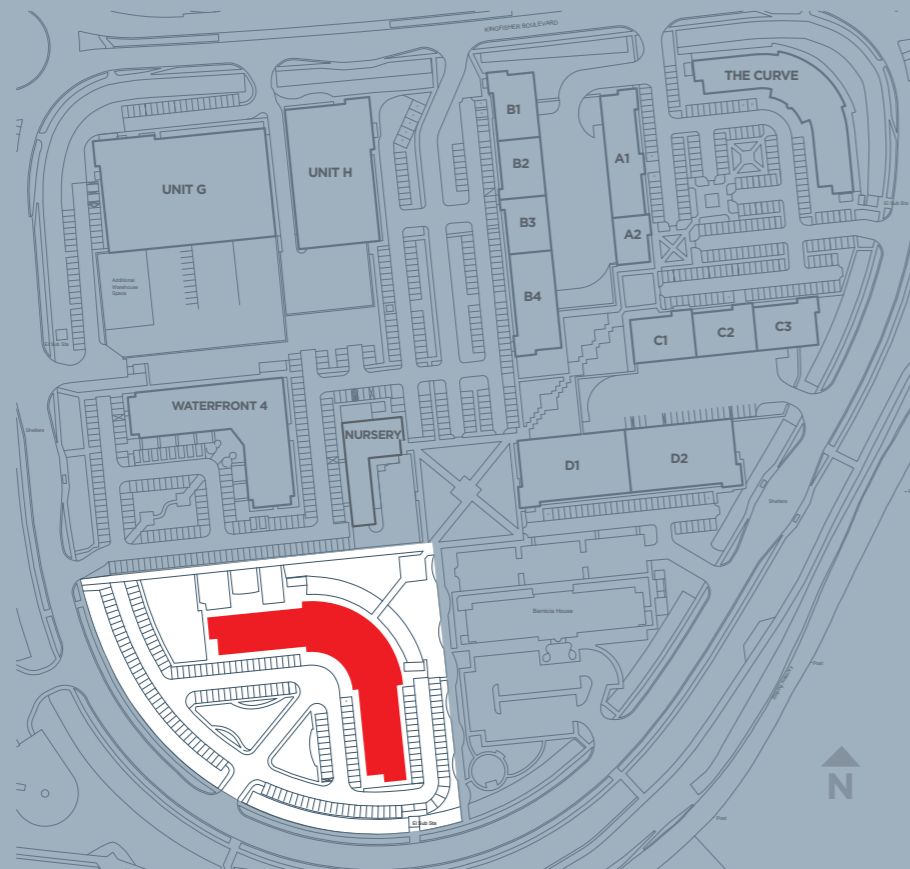
Riverside House

Riverside House

Accommodation

The accommodation briefly comprises of the following approximate areas:

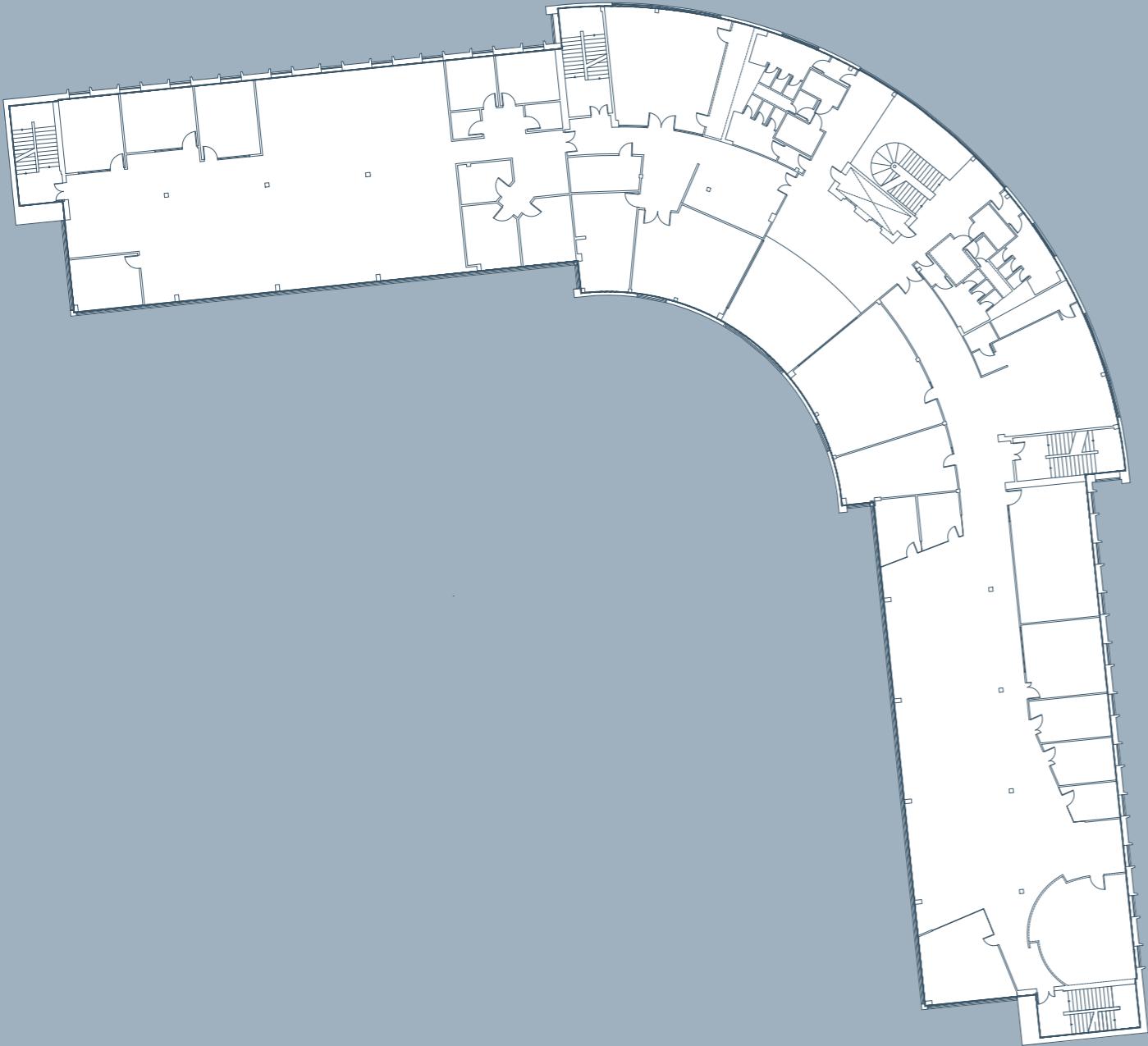
FLOOR	SIZE (SQ M)	SIZE (SQ FT)
Ground	1,535.50	16,528
First	1,535.50	16,528
Second	1,418.72	15,271
TOTAL	4,489.72	48,327



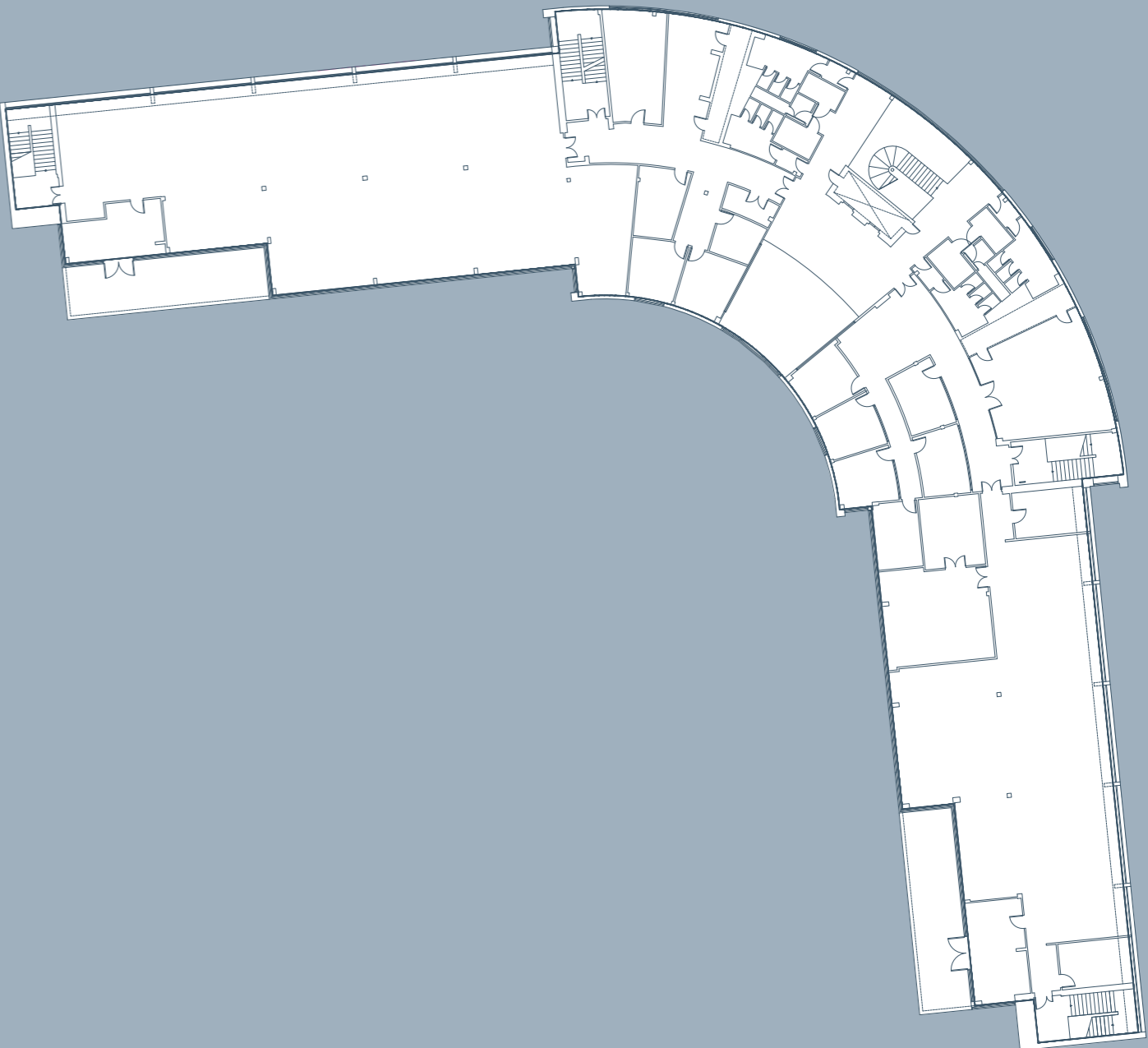
Ground Floor
Total: 1,535.50 SQ M (16,528 SQ FT)

Accommodation

Riverside House



First Floor
Total: 1,535.50 SQ M (16,528 SQ FT)



Second Floor
Total: 1,418.72 SQ M (15,271 SQ FT)

Offices to Let

Riverside House

Goldcrest Way, Newburn, Newcastle upon Tyne **NE15 8NY**

EPC

EPC Rating - B.

Legal Costs

Each party is to be responsible for their own legal costs.

VAT

All rents and figures quoted above are exclusive of VAT where chargeable.

Rates

On application.

Tenure

Available by way of a new Full Repairing and Insuring lease for a term to be agreed at a rent of £10 per sq ft.

For more information or to arrange a viewing please contact

PARKER KNIGHTS

REAL ESTATE

MICHAEL DOWNEY

+44 (0)191 649 8924

mdowney@parkerknights.co.uk

JOHN ROUTLEDGE

+44 (0)191 649 8294

jroutledge@parkerknights.co.uk

**AVISON
YOUNG**

TONY WORDSWORTH

+44 (0)191 269 0508

tony.wordsworth@avisonyoung.com

ADAM LAWSON

+44 (0)191 269 0064

adam.lawson@avisonyoung.com

Avison Young hereby gives notice that the information provided either for itself, for any joint agents or for the vendors lessors of this property whose agent Avison Young is in this brochure is provided on the following conditions: 1. The particulars are set out as a general outline only, for the guidance of intending purchasers and/or lessees and do not constitute an offer or contract, or part of an offer or contract. 2. All descriptions, dimensions and references to this property's condition and any necessary permission for use and occupation, and any other relevant details, are given in good faith and are believed to be correct. However, any intending purchasers or tenants should not rely on them as statements or representations of fact but satisfy themselves of their correctness by inspection or otherwise. 3. No person in the employment of Avison Young, or any joint agents, has any authority to make or give any representation or warranty whatsoever in relation to the property or properties in this brochure. 4. All prices quoted are exclusive of VAT. 5. Avison Young shall have no liability whatsoever in relation to any documents contained within the brochure or any elements of the brochure which were prepared solely by third parties, and not by Avison Young.