



16 Redcross Cottages, Chaddesley Corbett, Kidderminster,
Worcestershire DY10 4PP

**G HERBERT
BANKS**

EST. 1898

16 Redcross Cottages, Chaddesley Corbett, Kidderminster, Worcestershire DY10 4PP

GIA 806ft² (74.95m²)

A pretty semi-detached cottage close to the ever popular village of Chaddesley Corbett

Approximate Distance in Miles

Kidderminster 4½ * Bromsgrove 5½ * Droitwich 8½
Worcester 15 * Birmingham 15 *

Situation

No.16 Redcross Cottages is situated a short distance west of the historic Worcestershire village of Chaddesley Corbett. Chaddesley provides an extensive range of amenities including the Chaddesley Corbett Endowed Primary School, two public houses, a butcher, doctor's surgery, florist, hairdressers, St. Cassian's Church, tea rooms, garage, and a post office in the Rowberry's Farm Shop.

The town of Kidderminster is a short driving distance away, with an extensive range of facilities including a train station with direct connections to Birmingham, Worcester, and London. Other centres such as Stourbridge, Bromsgrove and the city of Birmingham are very accessible. There is good M5 motorway access via junction 4

Description

This pretty Victorian cottage has two bedrooms, with the living accommodation extending to 806ft². The property is in good order, albeit with slightly dated fittings to the bathroom and kitchen.

The front door opens to a hallway and doors to the two reception rooms, as well as stair to the first

floor. The sitting room has a painted beamed ceiling and a brick fireplace with a log burning stove.

To the rear of the property, in what is a more modern single storey extension, is the kitchen, hallway, bathroom and separate WC.

The property would seem to offer an excellent opportunity for a more substantial rear extension over two floors (subject to planning).

The property has ample off-road parking and a good sized garden.

Tenure

Freehold with vacant possession to be given on completion.

Services

Mains water and electricity are connected to the property. The cottage shares a private drainage system with No.17 next door.

Local Authority

Wyre Forest District Council Tel: 01562 732928.

Fixtures and Fittings

Any items of this nature not specifically mentioned within the confines of these sales particulars are to be excluded from the sale.

Viewing

Via the Sole Agent - Tel: 01299 896968.

Rights of Way, Wayleaves & Easements

The selling agent is also not aware of any private or public rights of way or easements affecting the land. The property is sold subject to and with the benefits of Rights, including Rights of Way, whether public or private, rights of light support, drainage, water, electricity supplies and other rights and obligations, easements, quasi-easements and restricted covenants and all existing wayleaves of mast pylons, stays, cables, drains and water, gas and other pipes, whether referred to in the general remarks and particulars of sale or not and to the provision of any planning scheme of county or local authorities.

Money Laundering, Terrorist Financing & Transfer of Funds (Information on the payer) Regulations 2017

We are governed by the Anti-Money Laundering Legislation and are obliged to report any knowledge or suspicion of money laundering to the National Criminal Intelligence Service. Therefore, if you purchase this property, you will be required to produce photographic identification and a utility bill for your current address in accordance with this Act. Without identification a sale cannot proceed.

Score	Energy rating	Current	Potential
92+	A		93 A
81-91	B		
69-80	C		
55-68	D		
39-54	E	40 E	
21-38	F		
1-20	G		



77.7m

A448

16 17

Redcross House

18

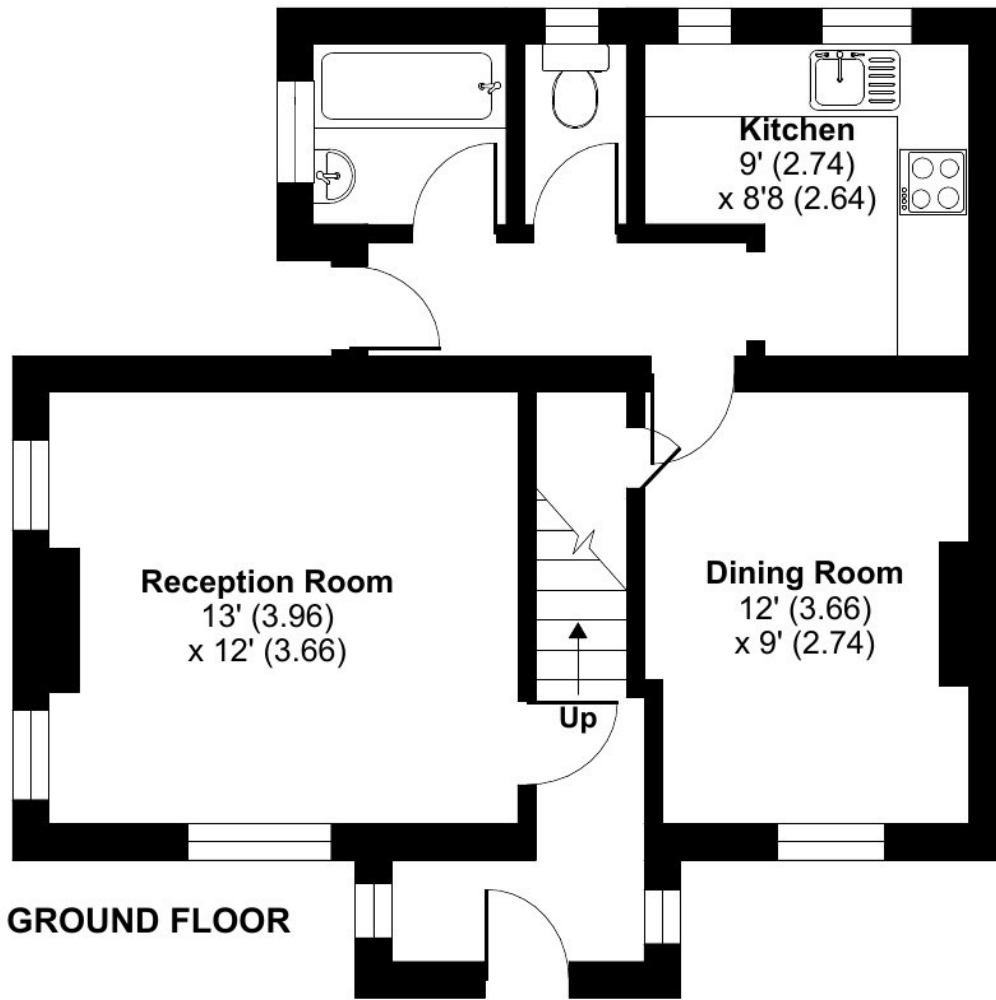
GP

75.9m

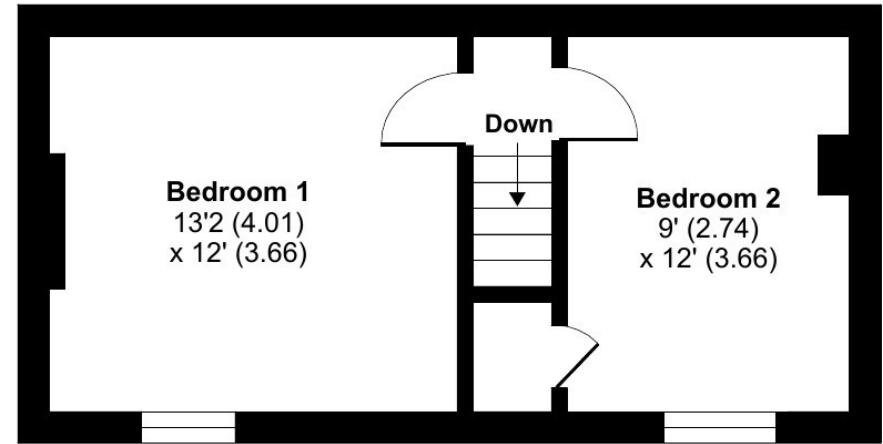
Chass

0m 15m 30m 45m

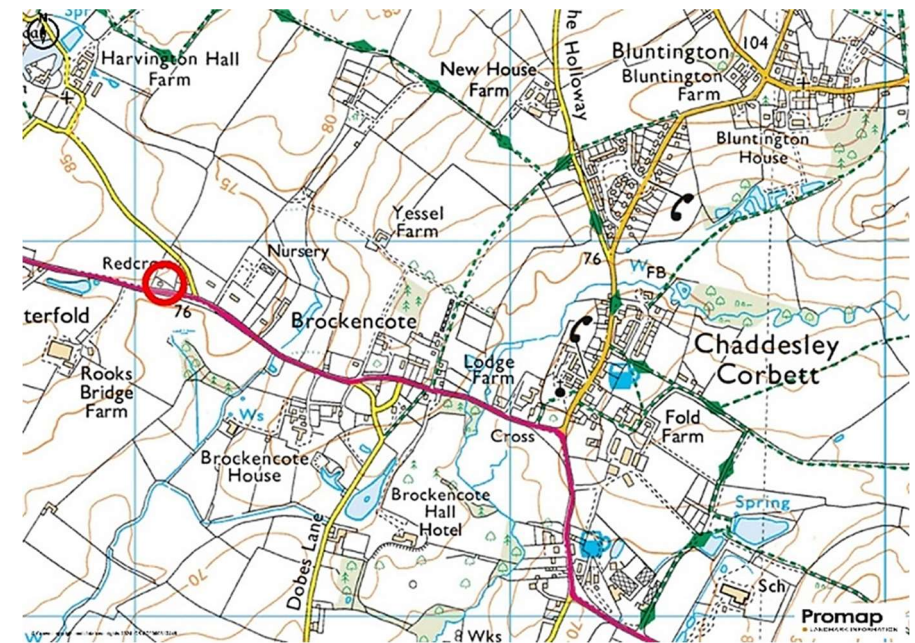




GROUND FLOOR



FIRST FLOOR



**G HERBERT
BANKS**

EST. 1898

01299 896 968
info@gherbertbanks.co.uk
www.gherbertbanks.co.uk

The Estate Office, Hill House
Great Witley, Worcestershire WR6 6JB



AGENTS NOTE The Agents would stress that these particulars have been written as a guide to the prospective purchaser and that measurements are approximate. If a prospective purchaser requires clarification on any point mentioned within these particulars they are asked to contact the Agents. The property is sold with all faults and defects, whether of condition or otherwise and neither the Vendor nor the Agents of the Vendor, are responsible for any such faults or defects or for any statements contained in the general remarks, summaries or particulars of sale of the property prepared by the said Agents. The purchaser shall be deemed to acknowledge that he has not entered into this contract in reliance of any of the said statements, that he has satisfied himself as to the correctness of each of the statements by inspection or otherwise and that no warranty or representation has been made by the Vendor or the said Agents in relation to, or in conjunction with, the property. The plan and quantities are based on the last Ordnance Survey sheets as revised by the Agents. Where fields or enclosures have been divided, the areas have been estimated by the Agents and the quantities are believed to be correct and shall be so accepted by the purchasers. G Herbert Banks LLP is a limited liability partnership registered in England and Wales with registered No. OC344076. G Herbert Banks LLP is a member of The Property Ombudsman.

