



Ensign House, Battersea Reach

Battersea, SW18 1TR

PROPERTY SUMMARY

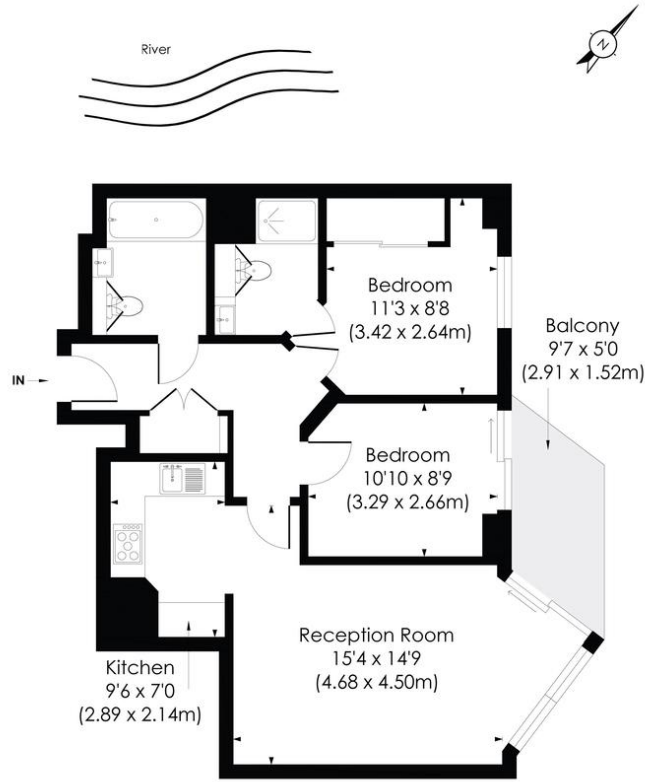
A welcoming and stylish 2 bedroom, 2 bathroom apartment with private balcony and parking offering, comfortable riverside living in the award-winning Battersea Reach development. The development offers convenient living with a 24-hour concierge service, resident's gym and conference room, secure underground parking, bike storage, CCTV, lift access, well-maintained communal gardens and onsite amenities.





JUNIPER DRIVE, SW18

Approx. Gross Internal Floor Area
710 Sq. ft/66 Sq. m



SEVENTH FLOOR

pixangle
PROPERTY MARKETING

This floor plan has been prepared for the purpose of illustration only in accordance with the latest RICS code of measuring practice and is not to scale. All measurements and areas are approximate and whilst every effort has been made to ensure the accuracy of the plan contained here, no responsibility is taken for any error, omission or misstatement.

© Pixangle Property Marketing Ltd. info@pixangle.com Tel: 0208 870 2118

LOCAL AUTHORITY
Wandsworth Borough

TENURE
Leasehold

COUNCIL TAX BAND
Band F

VIEWINGS
By prior appointment only

| Energy Efficiency Rating | | Current | Potential |
|---|--|-------------------------|-----------|
| Very energy efficient - lower running costs | | | |
| (92-100) A | | | |
| (81-91) B | | 84 | 85 |
| (69-80) C | | | |
| (55-68) D | | | |
| (39-54) E | | | |
| (21-38) F | | | |
| (1-20) G | | | |
| Not energy efficient - higher running costs | | | |
| England, Scotland & Wales | | EU Directive 2002/91/EC | |

Agents Note: Whilst every care has been taken to prepare these particulars, they are for guidance purposes only. All measurements are approximate and are for general guidance purposes only and whilst every care has been taken to ensure their accuracy, they should not be relied upon and potential buyers/tenants are advised to recheck the measurements



4 Vicentia Court
Bridges Wharf
London
SW11 3GY

02073522455
info@hgproperty.co.uk
www.hgproperty.co.uk