





21 Gainsborough Close

Torquay, Torquay

A Coastal Gem in The Lincombes – 21 Gainsborough Close, Torquay

Set in the highly sought-after Lincombes area, just a short stroll from the stunning Daddyhole Plain, Meadfoot Beach, and Torquay Harbour, this beautifully renovated two-bedroom home offers a rare opportunity to embrace the coastal lifestyle. With no onward chain, this property is perfect as a first-time purchase for discerning buyers, a tranquil holiday retreat, or a lucrative investment as a buy-to-let or holiday let.

Stylish Living Spaces

Meticulously upgraded and thoughtfully designed, this home exudes Scandinavian charm with its seamless blend of natural wood tones and neutral creams. The entire property features elegant wood flooring, combining aesthetic appeal with practical ease of maintenance.

The ground floor boasts an open-plan layout designed to maximize natural light and take full advantage of the captivating sea views. Upon entering, a convenient cloakroom WC with high-end Porcelanosa finishes and a coat storage cupboard provides practicality. The heart of the home is the contemporary kitchen and living space.



The lounge area features stylish designer radiators and large sliding French doors that lead to the private garden, where low-maintenance Cornish cream paving, outside lighting, and power create an inviting space for sunbathing, BBQs, or simply relaxing in the sunny, sheltered position. Private gated access connects the garden to the driveway and garage on Higher Lincombe Road, further emphasizing the property's enviable location.

- **Bedroom One:** Enjoys breathtaking sea views through dual windows and offers extensive storage with two deep double wardrobes, an over-stairs cupboard, and elegant wood flooring.
- **Bedroom Two:** A generously sized double room with ample space for furniture and additional comforts. The main bathroom has been expertly enlarged and upgraded to include:

- A roll-top bath for ultimate relaxation.
- A double-width shower cubicle.
- Porcelanosa sanitary ware, a heated towel radiator, and a cabinet with an underneath shelf for added convenience.

Natural light floods the landing and bathroom through cleverly installed light tunnels, enhancing the home's bright and airy ambiance.



21 Gainsborough Close

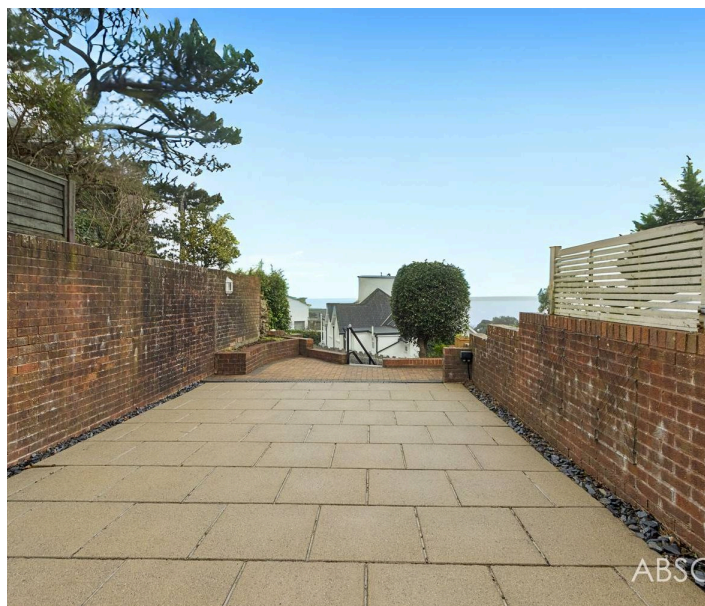
Torquay, Torquay

Set within the Lincombes Conservation area, the property is very close to a local bus route and the nearby friendly village community of Wellswood, with its church, school, pub, restaurants, cafes and shops. From the property the road leads towards the harbour and marina and in the other direction to the beach at Meadfoot, where there is parking, a beach cafe and the stunning Regency Crescent that is home to the Osborne Hotel. Torquay retains the feel of a traditional seaside town with its stunning coastline, iconic palm trees, sandy beaches, and historic pier, all enhanced by the international marina and a delightful array of shops, galleries and cafes. There are many bars and restaurants dotted along the waterfront offering the opportunity to eat and drink alfresco and to sample some of the finest seafood from nearby Brixham, the heart of the seafood coast. The area has many beaches with an array of water sports and fishing also available.

Council Tax band: D

Tenure: Freehold

EPC Energy Efficiency Rating: C

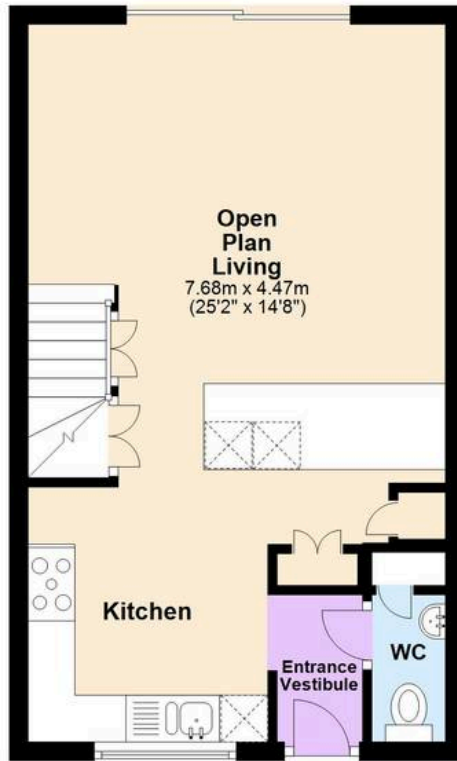
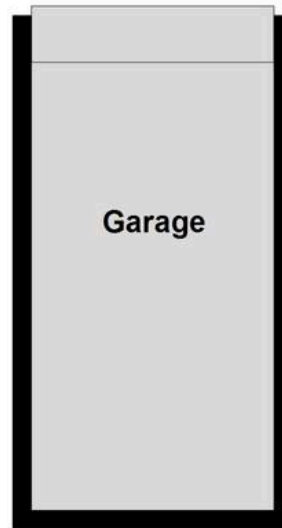




ABSOLUTE

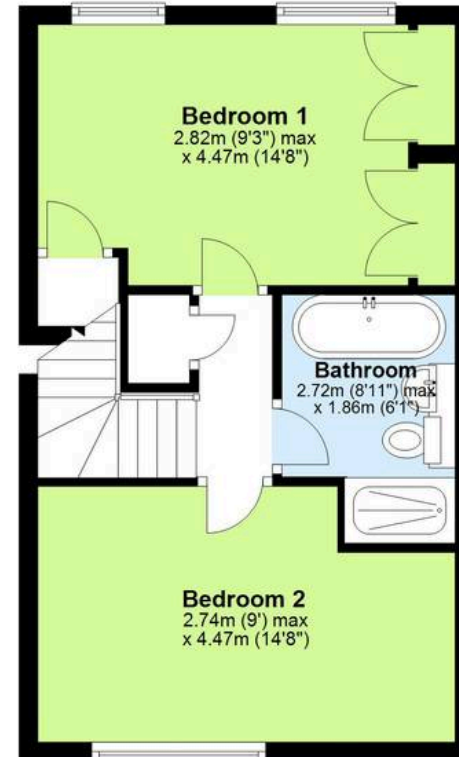


Ground Floor



First Floor

Sea views towards Berry Head





Absolute Sales & Lettings

Absolute Sales & Lettings Ltd, 13 Ilsham Road - TQ1 2JG

01803 214214

torquay@movewithabsolute.co.uk

movewithabsolute.co.uk/

