



143 Camps Rigg, Livingston

Livingston

Offers Over **£150,000**



143 Camps Rigg

Livingston

This stunning two-bedroom terraced home, located in the popular and convenient area of Livingston, offers contemporary living at its finest. With a modern design throughout, this property seamlessly blends style, comfort, and practicality, making it an ideal choice for families, professionals, or those who enjoy entertaining.

Upon entering, you're greeted by a spacious and thoughtfully designed open-plan ground floor. The heart of the home is the modern kitchen, which features integrated appliances including a dishwasher, fridge/freezer, oven, and hob. A standout feature is the built-in island with a dining table, providing a stylish and functional space for casual meals and hosting. The kitchen flows effortlessly into the dining area and living room, creating the ultimate space for entertaining and everyday living. The open-plan layout, complemented by large windows, fills the space with natural light, making it warm and inviting throughout the day.



Upstairs, the home continues to impress with two generously sized double bedrooms. The main bedroom is adorned with elegant panelling, adding a stylish and sophisticated touch to the space, the room can also comfortably accommodate a king-size bed, making it a tranquil retreat after a long day. The second bedroom includes fitted storage, making it a versatile space that could serve as a guest room, home office, or children's bedroom. A well-appointed family bathroom and a separate utility room add to the home's practicality, ensuring every need is met.

Externally, this property boasts an enviable west-facing rear garden, perfect for enjoying sunny afternoons and evening gatherings. The garden offers a great combination of lawn and patio space, ideal for outdoor dining or simply relaxing in the sun.

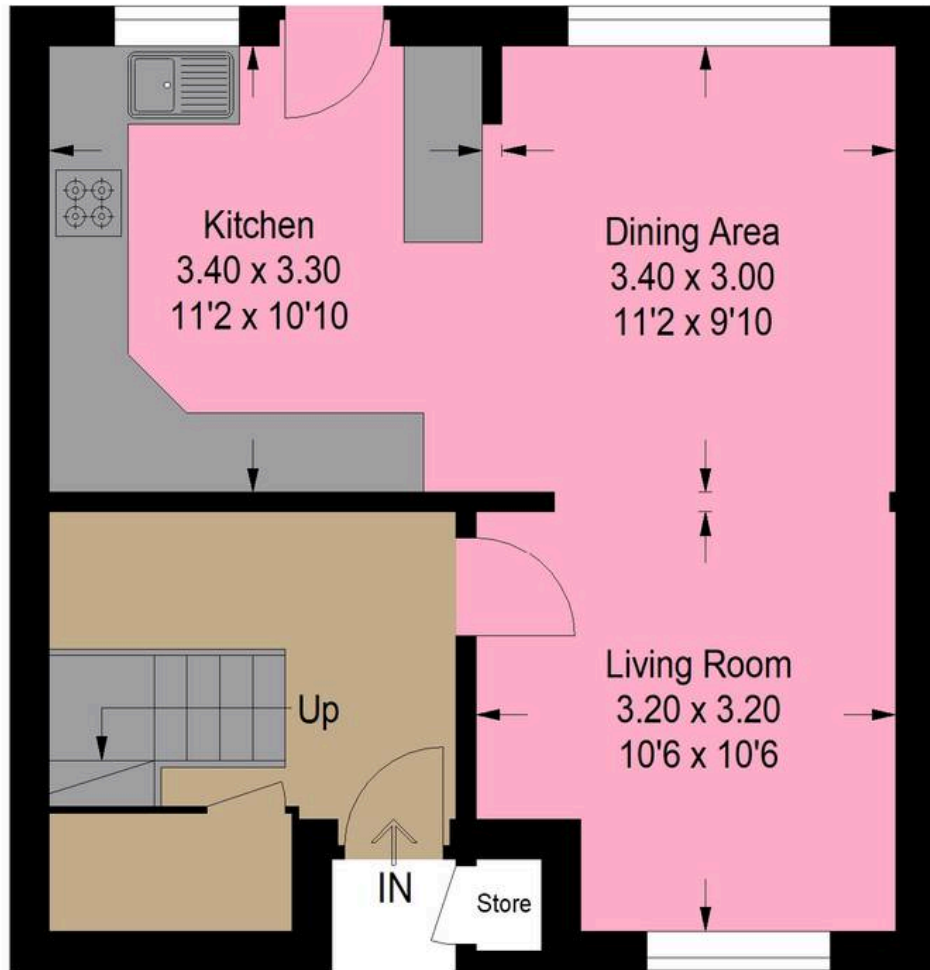
To the front, the property features a low-maintenance garden with off-street parking, providing both convenience and curb appeal. Additionally, a powered shed, currently used as a workshop and storage area, adds further functionality for hobbies or extra storage needs.



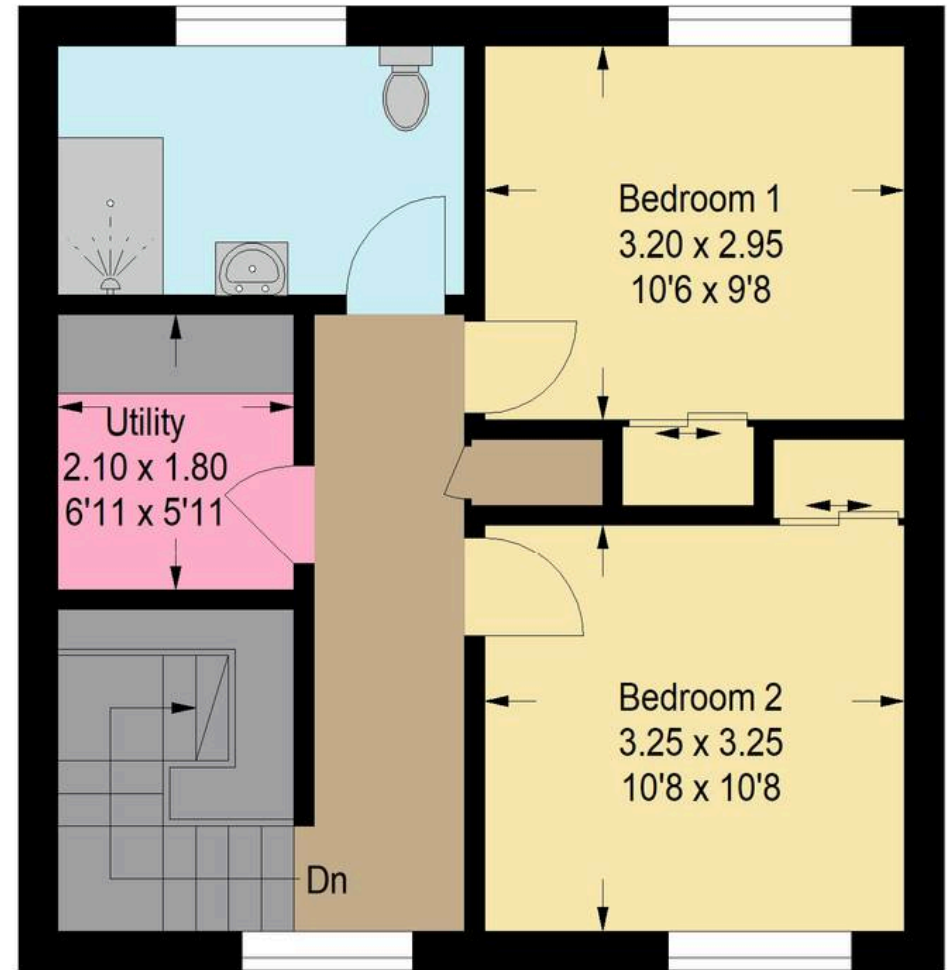
Combining its modern design, high-quality finishes, and excellent location, this property offers the perfect balance of comfort and convenience. From the sleek integrated kitchen to the spacious west-facing garden, off-street parking, and the panelling detail in the main bedroom, this home is designed to meet the needs of modern living. Don't miss the opportunity to make this exceptional property in Livingston your new home.



Approximate Gross Internal Area = 86.3 sq m / 929 sq ft



Ground Floor



First Floor

Illustration For Identification Purposes Only. Not To Scale (ID:1154142 / Ref:89726)



Bridges Properties

94 West Main Street, Whitburn - EH47 0QU

01501519435

info@bridges-properties.co.uk

www.bridges-properties.co.uk/

