

# A **HOME** WITH HEART

## WELCOME TO FRANKHAM WALK

A new community of peacefully private and beautifully built 1, 2, 3 and 4 bedroom converted Victorian apartments, duplexes and a townhouse, just moments away from Deptford High Street – Frankham Walk is home, but not as you know it.

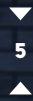
With an unbeatable location, fast connections across London, and a design that retains its heritage and charm whilst boasting the very best of contemporary living, Frankham Walk combines class with unconventional character to deliver a one-of-a-kind lifestyle.





A SPACE FOR YOUR

# SPIRIT TO SHINE



# AN AREA WHERE HERITAGE IS



Deptford's rich history and industrial heritage are closely intertwined with the dockyards which were used to build ships for the Royal Navy until the late 1800s. As the dockyards closed, Deptford has since evolved, welcoming a diverse community of creative individuals to the area to live, work and play. The former Tidemill School was built in the 1920s and its buildings will be retained within Frankham Walk to celebrate the area's history whilst allowing for the local community to grow. Today, Deptford is a thriving and bustling London neighbourhood – home to one of the capital's most popular markets, charming cafes, independent boutiques, and so much more.

- 1 DOCKLANDS - 1898
- 2 TIDEMILL SCHOOL
- 3 DEPTFORD MARKET YARD

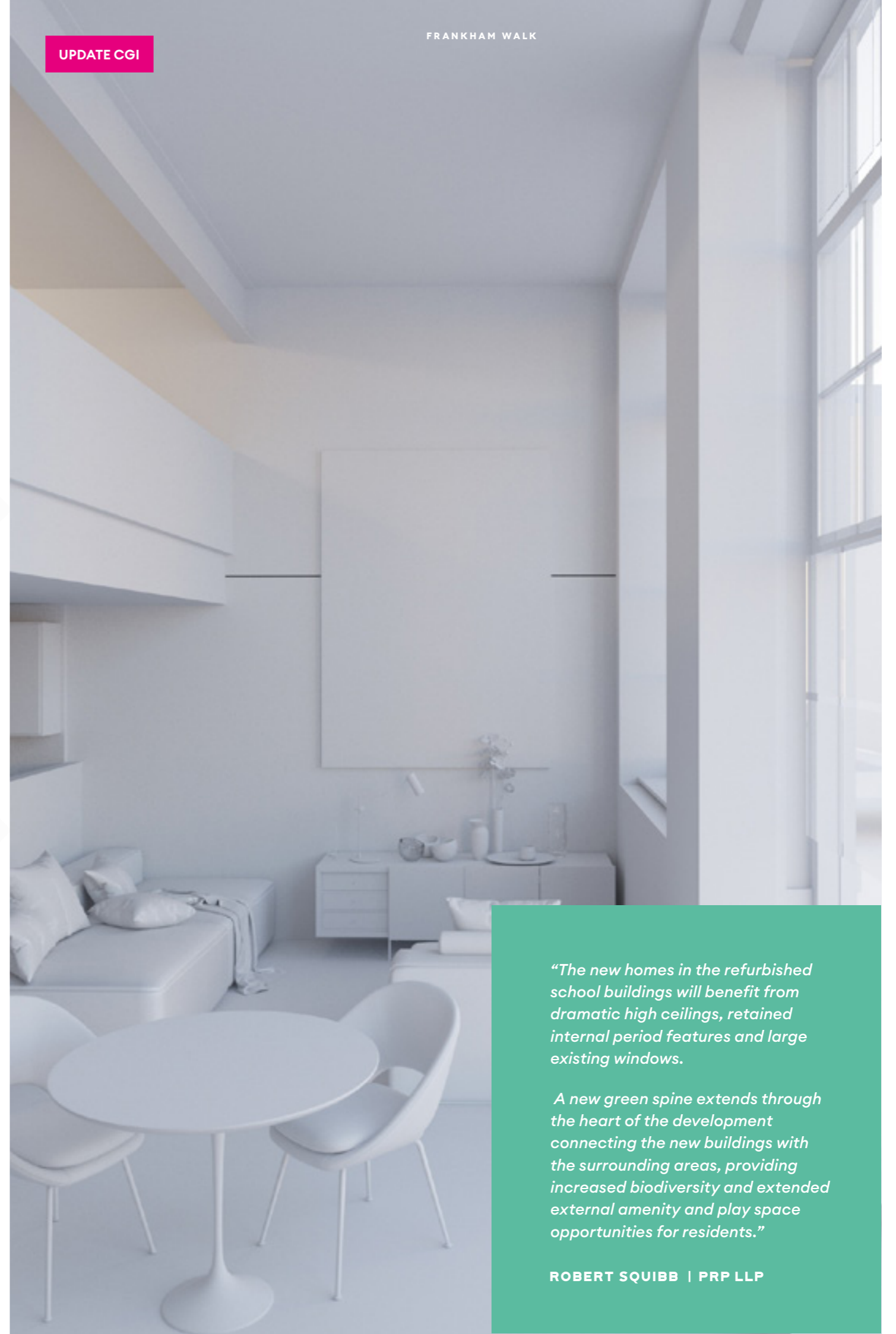
# EMBRACED AND PROGRESS IS ENCOURAGED

# FIRST CLASS CHARACTER CHARACTER CHARACTER



Frankham Walk is made up of 1, 2, 3 and 4 bedroom homes set across two former Victorian school buildings. Each new home is distinctively unique and boasts a selection of the original design features inclusive of double height spaces and large period windows. Due to the layout of the old school no two homes are exactly alike, meaning your home will be one-of-a-kind.

To complement the existing building's charm and character, the materials chosen for the reimagining of this iconic site have been carefully considered to pay homage to the history of the space and Deptford's industrial heritage – inclusive of chic metal balconies, shaker style kitchen cabinets and black framed shower screens.



*“The new homes in the refurbished school buildings will benefit from dramatic high ceilings, retained internal period features and large existing windows.”*

*A new green spine extends through the heart of the development connecting the new buildings with the surrounding areas, providing increased biodiversity and extended external amenity and play space opportunities for residents.”*

ROBERT SQUIBB | PRP LLP

UPDATE CGI



▼  
10  
▲

▼  
11  
▲

# A PLACE FOR EVERY PACE OF LIFE

From the lusciously landscaped communal gardens through to Deptford station that's just a few minutes away on foot, Frankham Walk combines private spaces to relax with instant access to all the thriving vibrancy of London.

A place where you're just as likely to form lifelong connections with your neighbours as you are to bring friends and family together, it's an environment that supports you in however you want to live. With the spaces and attention-to-detail that make every moment really count.



1



2

- 1 STOCKTON
- 2 COMMUNAL GARDENS



# LIVE AMONGST THE ACTION



CANARY WHARF

THE O2

LONDON CITY AIRPORT

GREENWICH PARK

UBER BOAT

GREENWICH

DEPTFORD CREEK

DEPTFORD BRIDGE

DEPTFORD



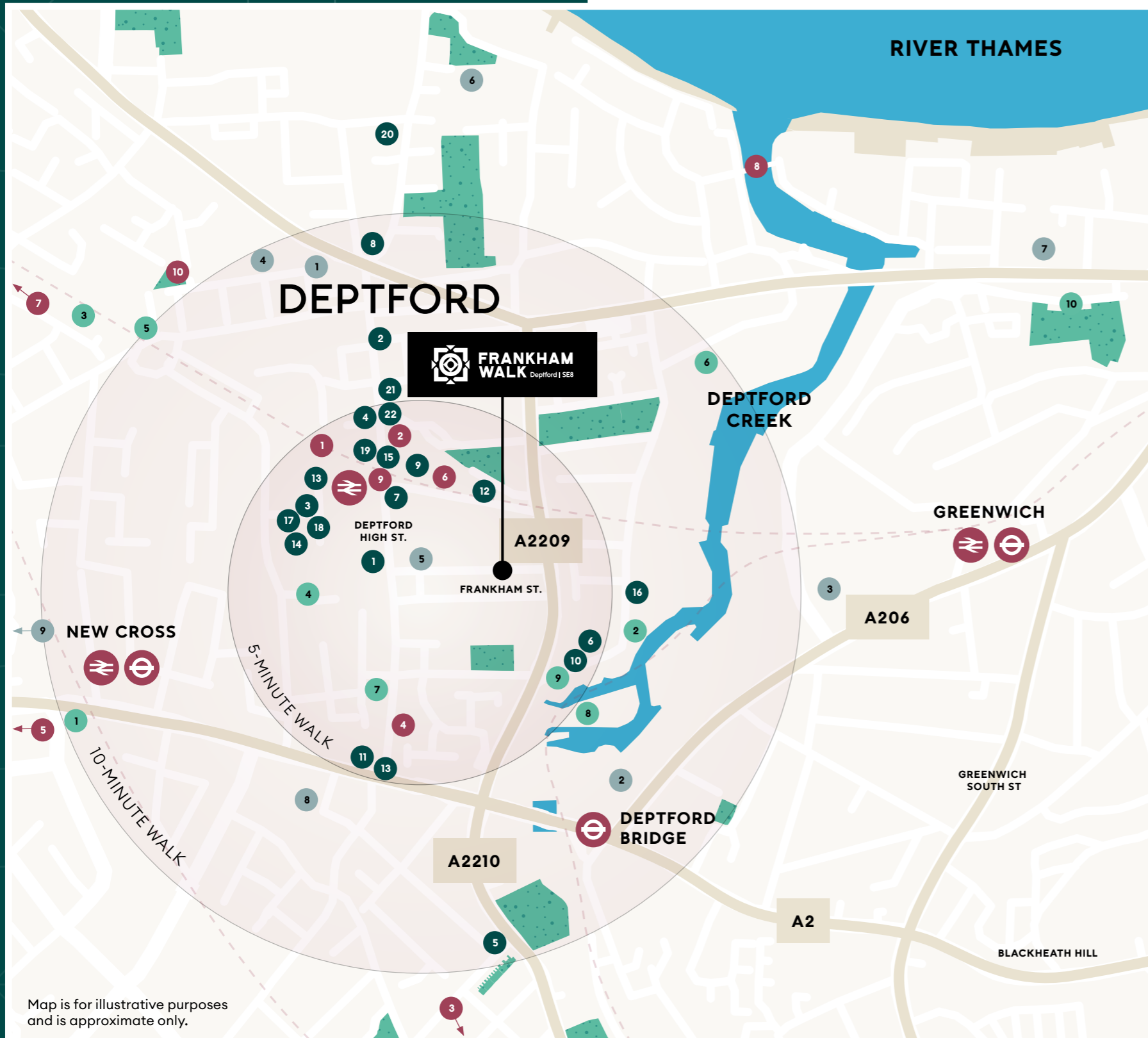
DEPTFORD HIGH STREET

14

15



# LONDON'S HIDDEN VILLAGE



Map is for illustrative purposes and is approximate only.

## EAT & DRINK



- 1 Deptford Market Yard
- 2 Manze's
- 3 Jars Bar
- 4 Marcella
- 5 The Brookmill
- 6 The Yeast Brothers
- 7 KiliG
- 8 The Watergate
- 9 Buster Mantis
- 10 Little Faith
- 11 STOCKTON
- 12 Villages
- 13 Little Nan's Bar
- 14 Lomond Coffee
- 15 The Waiting Room Coffee Bar
- 16 Gaff
- 17 Dirty Apron
- 18 Jerk Yard
- 19 Badger Badger
- 20 The Dog & Bell
- 21 Deli X
- 22 Sodo Pizza

## RETAIL, LEISURE & OUTDOOR



- 1 Forest
- 2 Rag N Bone
- 3 Aladdin's Cave London
- 4 Deptford Does Art
- 5 Planet Wax
- 6 The Commando Temple
- 7 Folkestone Gardens Skatepark
- 8 Greenwich Reach Swing Bridge
- 9 Tanuki Gaming
- 10 Deptford Blue Cage

## ART & CULTURE



- 1 Amersham Arms
- 2 Art in Perpetuity Trust
- 3 No format Gallery
- 4 The Albany
- 5 Matchstick Piehouse
- 6 Laban Theatre
- 7 Deptford Anchor
- 8 Goldsmiths MFA Fine Art Studios
- 9 The Artworks Creekside
- 10 Up The Creek comedy club

## SCHOOLS & EDUCATION



- 1 Little Butterfly Daycare Nursery
- 2 Twinnie Day Nursery
- 3 Bright Horizons Greenwich Day Nursery and Preschool
- 4 Grinling Gibbons Primary School
- 5 Tidemill Academy
- 6 Invicta Primary School
- 7 St Alfege with St Peter's C of E Primary School
- 8 Addey and Stanhope School
- 9 LEYF Playhouse nursery



# LONDON

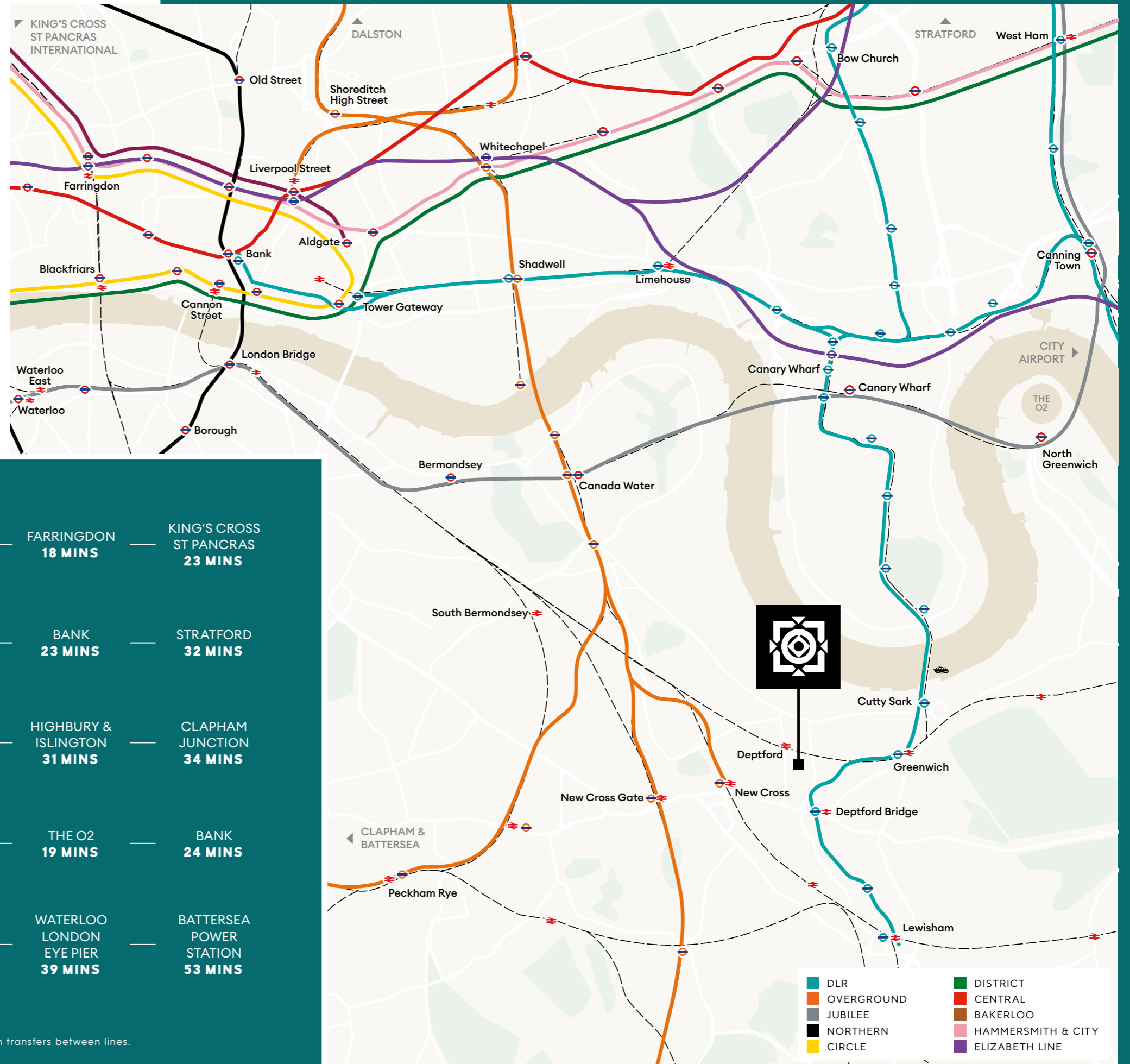
LIVING ON YOUR






# DOORSTEP

# YOUR ZONE 2 >>> LIFESTYLE

From Frankham Walk, you can be in the very heart of Central London within just 7 minutes by rail. Zone 2's Deptford station is a 4-minute walk from your front door. And from there, regular and rapid National Rail services will have you to London Bridge, the City of London and Farringdon in a flash. Hop onto the Elizabeth line at Farringdon for quick access to Heathrow Airport or for a day trip to Reading. Alternatively, Deptford Bridge DLR station is a 7-minute walk south of the development. Deptford's location just south of the Thames means travel by water is also an option, with Uber Boat services running from both of the nearby Greenwich and Greenland Surrey Quays piers.

Last but not least, for trips even further afield, you can be at London City Airport in 31 minutes via Thameslink and DLR, while Gatwick, Heathrow and Stansted are less than an hour's drive away.



 BY RAIL FROM DEPTFORD STATION	GREENWICH STATION <b>2 MINS</b>	LONDON BRIDGE <b>7 MINS</b>	FARRINGDON <b>18 MINS</b>	KING'S CROSS ST PANCRAS <b>23 MINS</b>
 BY DLR FROM DEPTFORD BRIDGE STATION	LEWISHAM <b>3 MINS</b>	CANARY WHARF <b>12 MINS</b>	BANK <b>23 MINS</b>	STRATFORD <b>32 MINS</b>
 BY OVERGROUND FROM NEW CROSS STATION	SHOREDITCH HIGH STREET <b>16 MINS</b>	DALSTON JUNCTION <b>22 MINS</b>	HIGHBURY & ISLINGTON <b>31 MINS</b>	CLAPHAM JUNCTION <b>34 MINS</b>
 BY BIKE FROM FRANKHAM WALK	GREENWICH PARK <b>8 MINS</b>	PECKHAM RYE <b>15 MINS</b>	THE O2 <b>19 MINS</b>	BANK <b>24 MINS</b>
 UBER BOAT FROM GREENWICH PIER	LONDON BRIDGE <b>23 MINS</b>	BANKSIDE <b>27 MINS</b>	WATERLOO LONDON EYE PIER <b>39 MINS</b>	BATTERSEA POWER STATION <b>53 MINS</b>

All travel times sourced from Google Maps. Most efficient journeys may contain transfers between lines. Travel times may vary depending on time of travel.

# A HISTORY IN EDUCATION

EDUCATION

EDUCATION

EDUCATION

EDUCATION

EDUCATION

EDUCATION

EDUCATION

EDUCATION

EDUCATION

EDUCATION



- 1 ARTISTIC STUDIES
- 2 LIKEMINDED STUDENTS
- 3 MEDIA PRODUCTION

## UNIVERSITY OF GREENWICH

# 08 MINS

VIA BIKE

## GOLDSMITHS UNIVERSITY

# 12 MINS

VIA BUS

## SOUTHBANK UNIVERSITY

# 29 MINS

VIA TRAIN & TUBE

## KINGS COLLEGE LONDON

# 33 MINS

VIA DLR

## UCL EAST

# 45 MINS

VIA DLR

## IMPERIAL COLLEGE LONDON

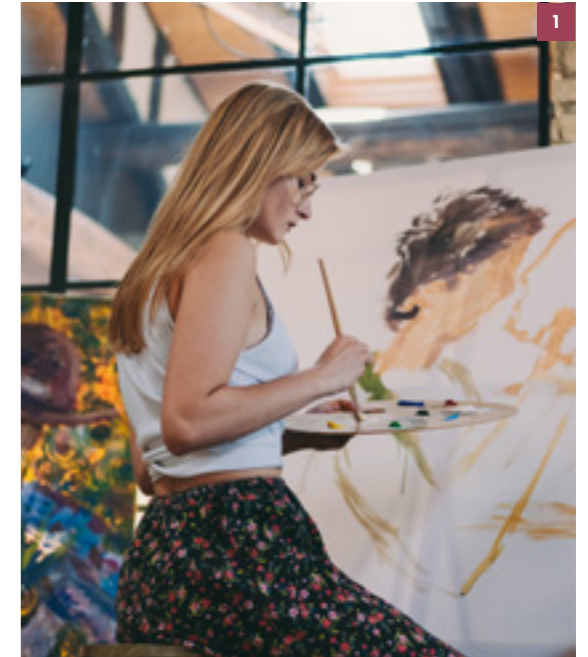
# 48 MINS

VIA TRAIN & TUBE

Not only is Frankham Walk the site of a former primary school, but it's also surrounded by some of the best universities and schools in London. That makes it a great place to raise a family, with options for every stage of life and for every type of educational pathway.

At the primary and secondary levels, there are 60 different schools or colleges with an Ofsted rating of Outstanding within a three-mile radius, as well as fantastic daycare and nursery options. When it comes to higher education, Frankham Walk's connections make it possible to take advantage of London's world-leading institutions, including the University of Greenwich which is just an 8-minute cycle from the development.

All travel times sourced from Google Maps. Most efficient journeys may contain transfers between lines. Travel times may vary depending on time of travel.



1



2



3

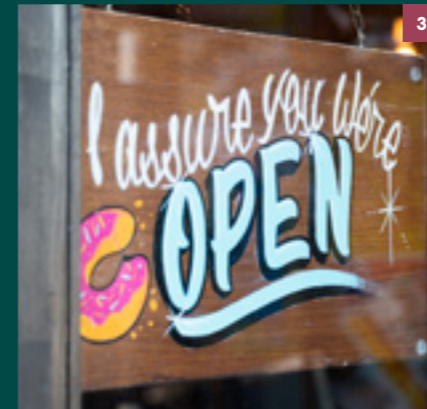


The focal point for the neighbourhood and its community, Deptford High Street is a rich and constantly evolving melting pot of independent businesses that all bring their own personality to the area. Home to everything you'd expect to find in a modern neighbourhood, along with hidden gems that'll fast become firm favourites, there's always something new to see, taste, or experience.

That might mean nipping into Tanuki Gaming, to find something new to play with friends and family. Or maybe trying on a few statement pieces from Rag N Bone's thrifted collection. Alternatively, pick up one of the best coffees in London from Gaff, or stop in at Badger Badger for a bite to eat.

Wherever Deptford's diverse offering takes you, no two days will ever be the same.

- 1 DEPTFORD MARKET YARD
- 2 GAFF
- 3 THE WAITING ROOM
- 4 KiliG



# THE SPIRIT OF DEPTFORD

# THE YEAST BROTHERS

📷 @theyeastbrothers



*One of the most important parts of Deptford is its community.* Everybody is always happy to help each other, and wants to **support small businesses like us grow.** After working for many years in Deptford, we'd built up strong relationships with suppliers and customers in the area. So when we decided to open a business, **Deptford was at the top of our list."**

Passionate about pizza and changing how it's made with the freshest ingredients and vegan/gluten-free options, The Yeast Brothers use the best of what can be found locally to make their menu a true celebration of Italian food with a South London twist.



DEPTFORD

MEANS

# DELICIOUS

With countless local restaurants, cafes and bars, the neighbourhood is a true celebration of food, with cuisines from all over the world represented at the table.

For fresh food, there are countless local markets operating in and around Deptford, dealing in everything from fruit and veg to freshly caught fish, artisanal cheeses, and plenty more. There's also Deptford Market, voted by Time Out as one of London's coolest markets and a hub of not just outstanding street food, but also vintage stalls, street theatre and independent shops.

1 GAFF

2 DEPTFORD MARKET YARD



Serving up an innovative angle on Caribbean food using authentic ingredients with a modern twist, Jerk Yard and its 'secret recipe' sauce passed down through generations are not to be missed. Well-known and well-loved across London's street food scene, Deptford is where Jerk Yard has made its permanent home.

Deptford prides itself on **togetherness as a community**, and that makes it such a great place for businesses to thrive. It's changed a lot over the last few years, but that change has brought new people into the community – making it a more **diverse place** where people can be themselves.”





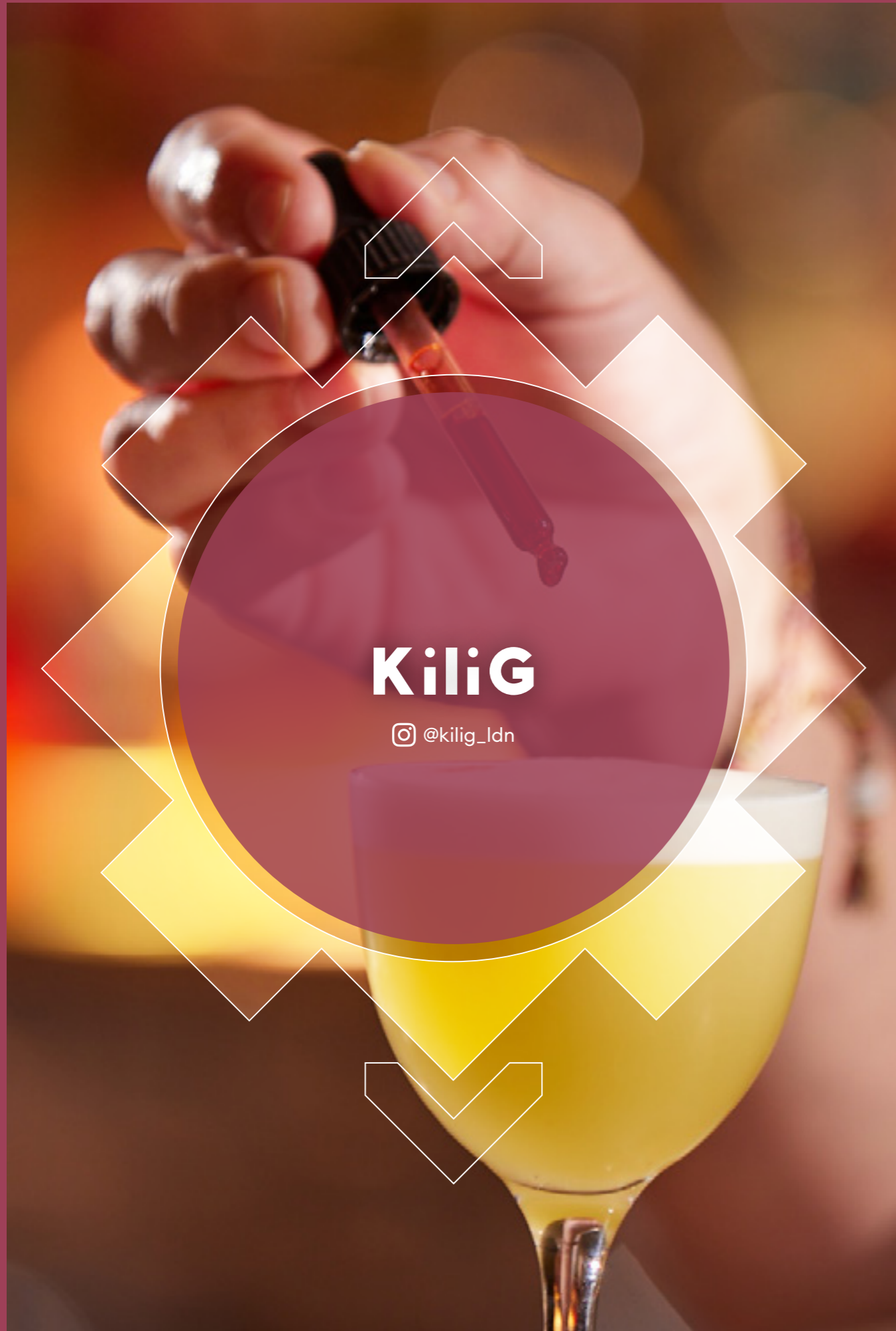
# FANCY A TIPPLE?



When it comes to drinks, Deptford more than delivers. Whether you're nipping out for a quick coffee before work or meeting friends for cocktails, you're always spoilt for choice.

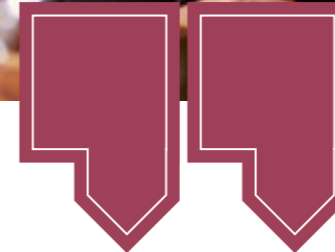
In the morning, look no further than local favourites like Lomond Coffee or The Waiting Room, which are just as good for people-watching as they are for grabbing a cappuccino. Meanwhile, one of the best places to start (or finish) a night out is at Little Nan's Bar, which has been here since 2013 and has a fully stocked bar that's always ready to whip up any of the 90 signatures on offer.

- 1 LITTLE NAN'S BAR
- 2 BLUETHROAT BAR
- 3 KICKSTART THE WEEKEND
- 4 JARS BAR



**KiliG**

@kilig\_ldn

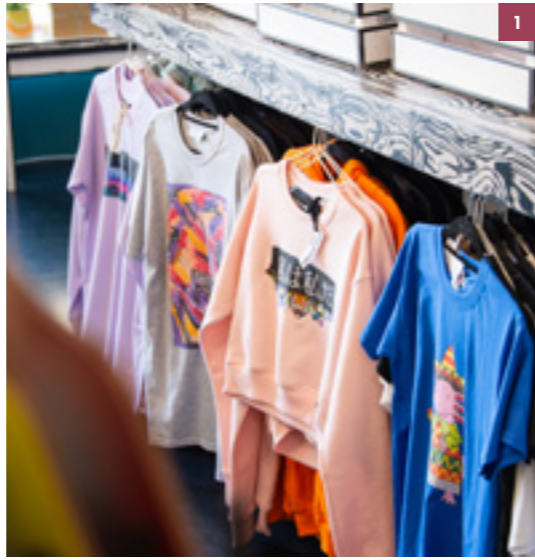


“Deptford is an up-and-coming area with a huge amount of **history and heritage**. Its community is made up of both lifelong locals and young professionals looking for their own place in London to call home. It’s our home too, and where better to set up KiliG than there.”

A Tagalog word meaning “the inexplicable feeling of joy and happiness”, KiliG is cuisine equally inspired by the Philippines and Colombia, along with a hearty helping of their family-first cultures too. A local favourite in every sense of the word, KiliG is Deptford in a nutshell – warm, welcoming, and creating something new by bringing people together.



# BE PART OF THE SCENE



Over the last few years, the number of artists, makers and creatives in Deptford has boomed, with new galleries opening near to Deptford Creek to show off their work. That's made the area one of South London's fastest-growing cultural destinations, drawing Londoners from all over the capital to see what's new, and maybe pick up a special piece for their own homes.

A few local favourites are Deptford does Art, The Albany Arts Centre, Laban Building, BEARSPACE Gallery and SEAGAR - all with their own distinct styles of art and a revolving schedule of events and showings that are always worth stopping in to see.

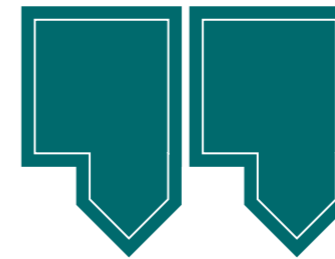


1 DEPTFORD DOES ART



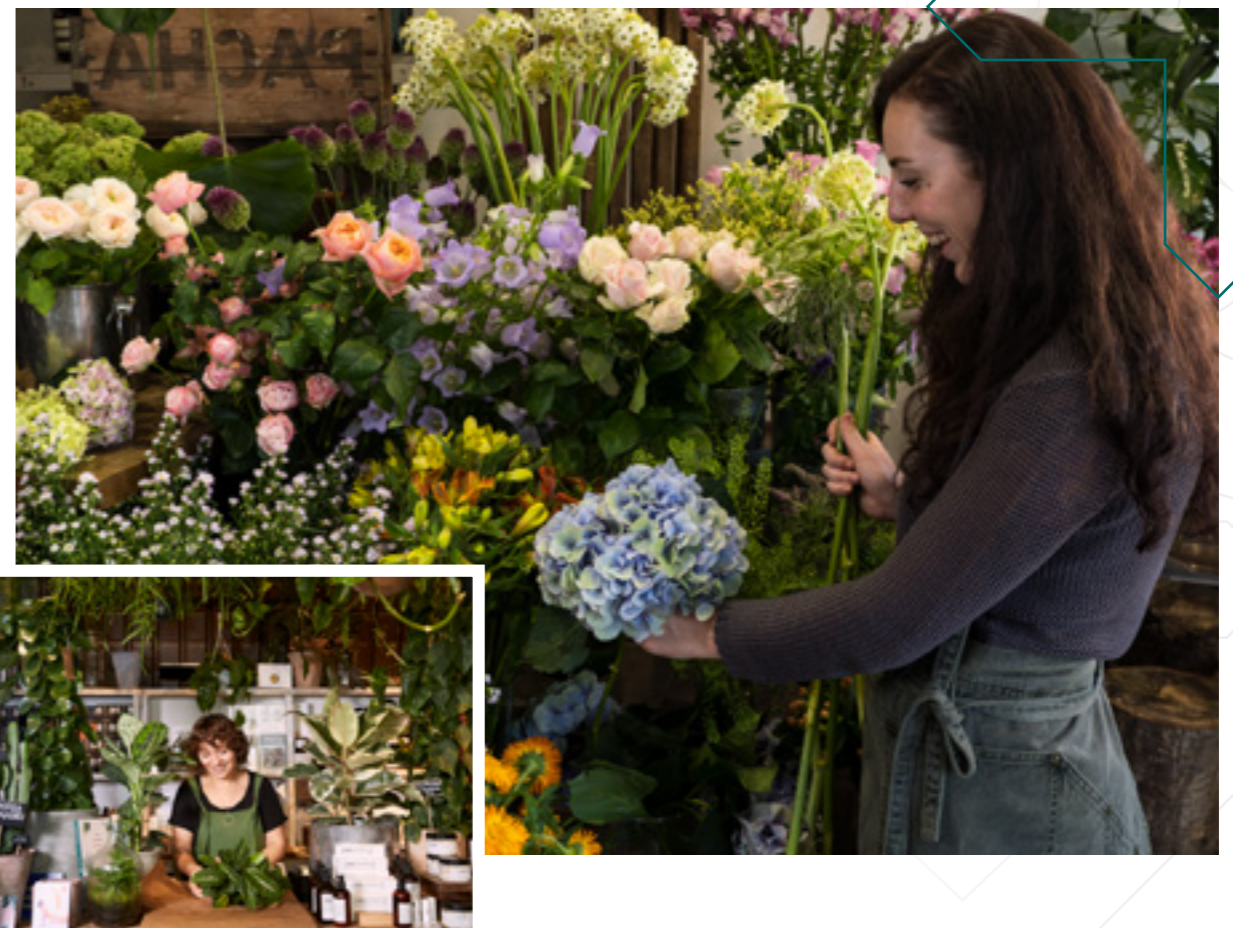
# FOREST

@forest\_london



Nestled in the railway arch at Deptford Market Yard, Forest is a fresh flower and plant business started by a mother and her two daughters in 2017. With a tight-knit team of plant enthusiasts who love to share wisdom and host workshops, this thriving, jungle-like spot feels more like a community than a plant shop.

There are so many interesting people around with **amazing stories**, and the more time you spend in the area the more enriching you'll find the **Deptford experience** to be.





# SUSTAINABLE LIVING

SOUTH LONDON

A forward-thinking development in a forward-thinking area, Frankham Walk gives you everything you need to live a more sustainable life.

Local fruit and veg stalls just minutes away on the high street make it easy to get fresher produce with less plastic packaging and waste, while Deptford's vintage shops and markets are great ways to upcycle rather than buying new. The area's superb connections make travel around London cleaner and greener too. Bus routes and rail lines mean trips are fast and effortless, while Frankham Walk's plentiful cycle storage spaces allow residents to take full advantage of city-wide cycle highways.



1 DEPTFORD MARKET  
2 KiiiG





# THE COMMANDO TEMPLE

Instagram icon @commandotemple



“Deptford is home to a ***bustling, dynamic group of people*** and being here means we get to work with incredibly diverse customers. In 2015, we won the Mayor of Lewisham’s Best New Business Award, which specifically referenced the area’s ***strong sense of community***, which we’re happy to be a part of.”

To enjoy everything that Deptford has to offer, you’ll want to be healthy and fit enough to explore the neighbourhood and areas around it. The Commando Temple is here to help you do it. A world-class training and exercise space with dedicated, passionate trainers, it’s the place to go to level up your lifestyle.

# CROSSING

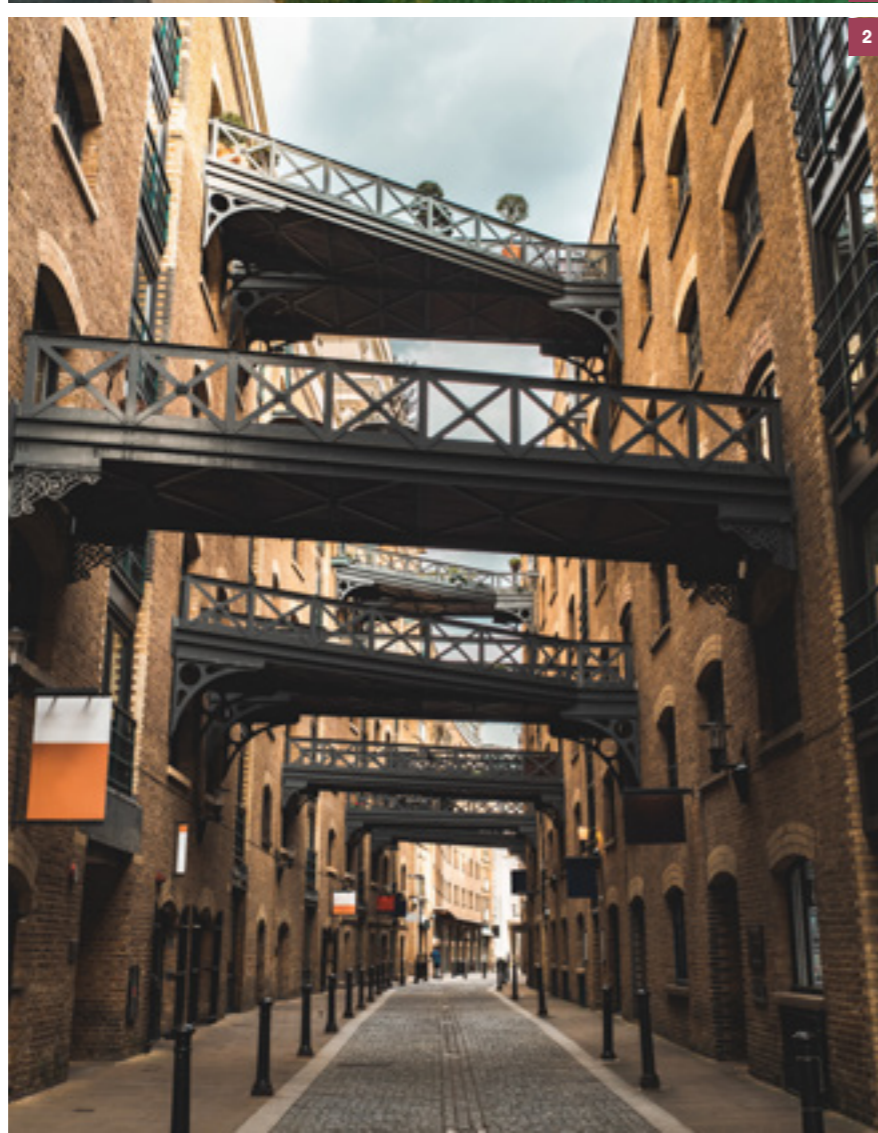
## THE CREEK



Frankham Walk is just a 5-minute walk away from Deptford Creek – one of the most biodiverse spots in London for its size, with over 300 different species of wildflowers.

It's the perfect place for a leisurely stroll after work or an early-morning weekend coffee. And if you feel like making more of a journey, you can cross the famous swinging footbridge at the mouth of the creek to get onto the Thames Path, which leads all the way through to Greenwich.

# LONDON LIVING



Frankham Walk is also surrounded by and connected to some of the capital's most fascinating places to visit and explore. Greenwich is right next door, with world-famous attractions, cosy pubs and wide-open green spaces. While Bermondsey to the north west and Peckham to the west are rapidly becoming some of London's most fashionable areas, with fantastic food scenes and nightlife.

Across the river, you've got easy access to everything that London is best-known for – from the West-End shows and vibrancy of Soho to the trendiest spots in East London and high-rise glamour of Canary Wharf. All easily accessible from Frankham Walk.

- 1 CANARY WHARF
- 2 BERMONDSEY
- 3 THE SHARD
- 4 BOROUGH MARKET





# MAKE LONDON YOURS

London is a city of neighbourhoods, each with its own charm and character. Deptford has just as much to offer as any of them, with its blend of riverside history and regeneration that's brought artists, entrepreneurs and creatives from all over the world to the area.

# WELCOMING

YOU TO THE

# NEIGHBOURHOOD

50

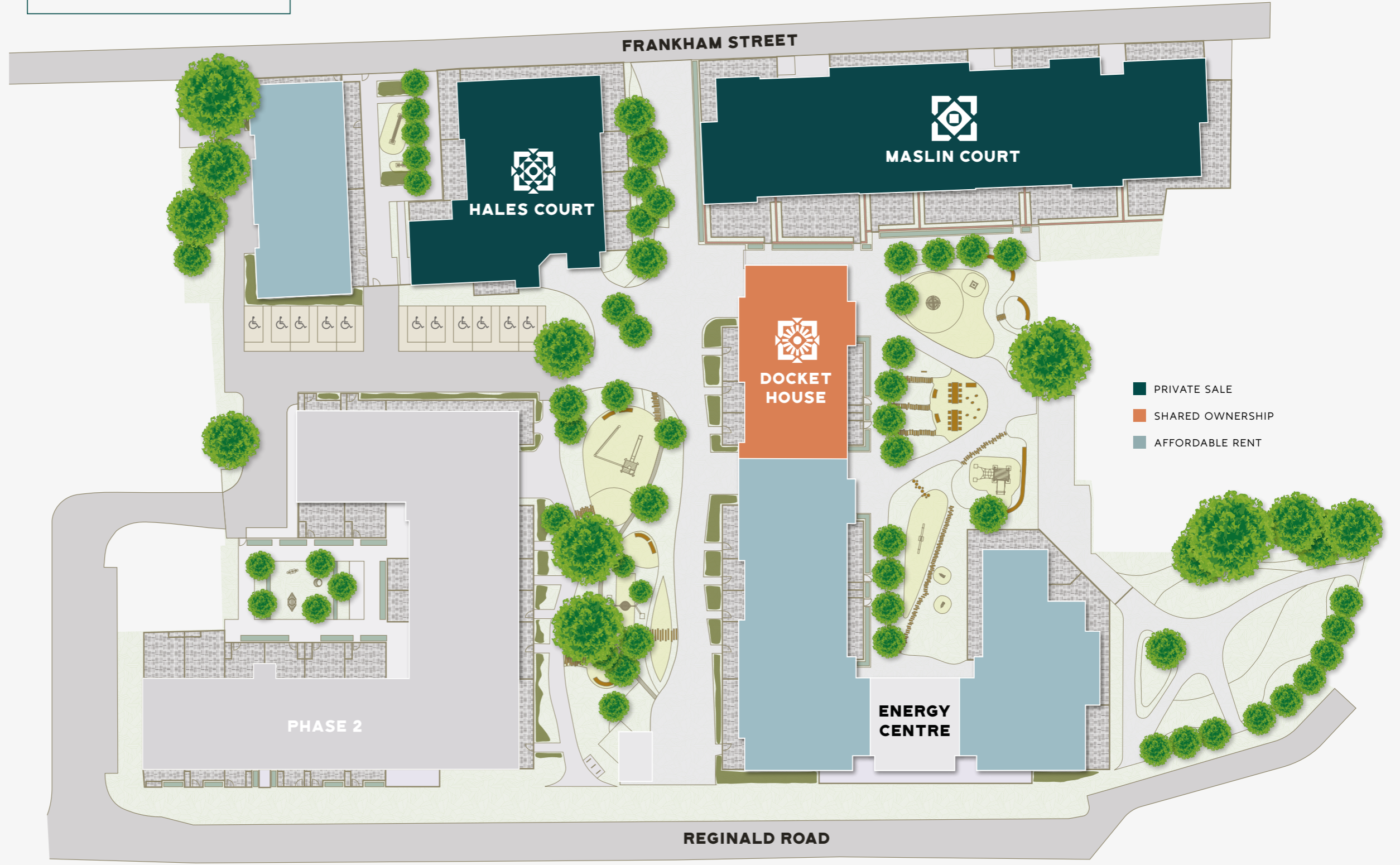
51

FRANKHAM WALK

FRANKHAM WALK

**DEPTFORD STATION**  
4-MINUTE WALK

**DEPTFORD HIGH STREET**  
2-MINUTE WALK



**DEPTFORD BRIDGE STATION**  
7-MINUTE WALK

SITEPLAN

SITEPLAN

# MAKE YOURSELF AT HOME







# SPECIFICATION



## LIVING / KITCHEN / DINING

- Matt blue kitchen units with shaker style doors and black handles
- White quartz worktops with matching plain white splashback and upstands
- White ceramic Belfast sink with polished chrome mixer tap
- Bosch frameless touch ceramic hob with integrated extractor fan with LED light
- Fully integrated Bosch microwave stainless steel microwave with touch control
- Bosch integrated fridge/freezer
- Bosch fully integrated dishwasher
- Under counter 3 stage separation waste bin

## BATHROOM

- White bath unit with dark grey bath panel
- Hansgrohe chrome thermostatic bath/shower mixer including overhead and hand shower
- Black framed square shower screen with clear glass
- Mirrored storage cabinet with open shelf units and single shaver socket inside

- Classic white square semi-recessed hand basin with chrome single level Hansgrohe mixer tap
- Classic white Geberit WC with soft close seat and chrome flushplate

## EN-SUITE

- Black framed sliding shower screen with classic white shower tray
- Hansgrohe thermostatic chrome shower kit including wall mounted overhead shower and separate hand shower
- Classic white square semi-recessed hand basin with chrome, Hansgrohe mixer tap
- Classic white Geberit WC with soft close seat and chrome Flushplate
- Mirrored storage cabinet with open shelf units and single shaver socket inside
- White gloss tiling around bath and above WC and hand basin

## BEDROOM(S)

- Recessed LED down lighting to all bedrooms
- Full height fitted wardrobes with blanket shelf and hanging rail to all main bedrooms

## INTERNAL DOORS & IRONMONGERY

- White panelled, fire-resistant solid doors throughout apartment
- Secure By Design front door, with brushed aluminium handles
- Single lever round chrome privacy door handles for bathrooms and en-suites
- Square edged architraves and skirtings throughout apartment

## FLOORING & HEATING

- Engineered Pergo flooring throughout all rooms and hallways, except bedrooms
- Grey carpet to bedrooms
- Chrome towel radiators to all bathrooms
- Underfloor heating throughout

## SECURITY & PEACE OF MIND

- Video entry system
- Multi-lock door with security chain and spy hole
- Sprinkler Fire Suppression System
- Wired smoke detectors and heat alarms
- 12 year NHBC warranty
- 2 year defect warranty
- 990 year lease

## ELECTRICAL & LIGHTING

- Recessed LED down lights to kitchen, living, dining, bedrooms, bathrooms, en-suites and hall
- Dimmer in kitchen, living and dining
- Kitchen task lighting fixed under all wall cabinets with warm white light
- Shaver socket to all bathrooms and en-suites

## GENERAL

- Central district heating system for heating and hot water and individually charged
- Switch2 metering system to each home
- Mechanical Ventilation with Heat Recovery system (MVHR), with controllers in kitchen and bathrooms
- Bosch freestanding white washer/dryer machine to storage cupboards
- TV and phone point to living area and main bedroom
- Fibre optic broadband connection provision capable of providing digital TV & HD Sky plus\*

## COMMUNAL

- Original parquet flooring in entrance hall†
- Amtico Royal Oak herringbone flooring with trim detail in all communal hallways†
- High quality, durable carpeting in stair core
- Downlighting throughout
- Video entry system
- Secure bicycle storage

\* Subject to separate subscription.

† School annex has herringbone flooring in entrance hall and first floor communal hallway. Ground floor hallway has original parquet flooring.

UPDATE CGI





# JOHN & ANNA

BOUGHT A ONE-BEDROOM APARTMENT AT THE SCENE WITH PEABODY.

## SOUTH EAST LONDON

Having previously rented a one-bedroom flat nearby for two years, Freelance Digital Marketer John, and Engagement and Events Manager Anna always knew their long-term goal was to own a home.

We are thrilled to have found a home in Deptford; we really love the area as it has so much to offer. We enjoy going to the arches under the railway station which have been converted into a selection of bars, restaurants and little boutique shops. We also feel very fortunate to be close to some beautiful parks and green spaces in nearby Greenwich which other areas of London lack. From New Cross station we can easily reach central London in just 10-minutes and for Anna, her commute is an easy 15-minute train journey. Deptford really has everything”.

“When we first viewed the two-bedroom duplex at The Scene we knew straightaway it was exactly what we wanted. It ticked all of our boxes; a second bedroom that we could convert into an office, much more space for us to enjoy living in and spending time together, lots of storage, private outdoor space and even better we have stairs! Most importantly, we wanted to stay in an area that we already knew and love – Deptford is really central and has good commuting links, which is great for Anna to get to work easily”.

“Lots of our friends are from Europe, and although I use it most of the time it is a really good size for guests – the room is big enough for my desk and a sofa bed which is perfect when we have friends to stay with us. The room is easily adaptable – one moment it is my office and with a quick shuffle around, it is an impressive extra bedroom”.

“Another lovely addition we love here is the private outdoor space available- we have really been enjoying using our terrace and balcony. In the spring, we will have beautiful views of the blossoming trees and flowers in the surrounding area “.

Having never purchased a property before, first time buyers John and Anna were incredibly grateful to have the help, expertise, and patience of the Peabody and the sales teams. “We were so impressed with the team’s knowledge and the support they gave us throughout the whole home-buying process.

# JUNE & GREG

BOUGHT A TWO-BEDROOM APARTMENT AT THE POMEROY WITH PEABODY.

## SOUTH EAST LONDON

“When it came to purchasing a property, it was always one of those things we were going to do ‘next year’. Then one year turned into two, two into three – and so on. Life got in the way. We both travelled regularly as well, so purchasing a property simply wasn’t a viable option for quite some time.”

“It was only when lockdown was in full swing that we really knuckled down and made the decision to buy. The amount of time we were spending within the confines of our London home made us realise what we lacked; which was space.”

“We’re both keen gardeners, so we knew that if we were to buy somewhere, the property would need to offer us enough space to preen and landscape. This is difficult to find in London, as the demand for properties with outdoor space has surged considerably over the past year, and so have the prices.”

“When we came across The Pomeroy, we fell in love immediately. One of the first things that sold us was the sense of light. We have floor to ceiling height windows, and large French doors leading out to the terrace. Because of this, the

whole apartment has an energy and lightness that our previous flat simply lacked.”

“We plan on sharing our cuttings and seedlings with our neighbours for them to use in their own outdoor spaces. The development has a very distinct, community feel to it. We have a very active WhatsApp group, and plan to meet up once restrictions have eased!”

“Buying a home for the first time is a daunting prospect to the best of us, no matter what age, but Peabody made our journey completely painless. Everything ran so smoothly, and we felt at ease in the knowledge that Peabody had a handle on everything. We can’t recommend them enough.”





# ABOUT PEABODY



## MORE THAN JUST A PLACE TO LIVE.

Peabody creates great places where people want to live, adding value by upholding high design standards, building sustainable, high-quality new homes that stand the test of time and making a positive difference through ongoing commitment to our communities.



### BUILDING HISTORY

Formed over 160 years ago by the American financier and philanthropist George Peabody, Peabody is one of the UK's oldest and largest housing associations. Together with Catalyst Housing who joined the Group in 2022, we are responsible for more than 104,000 homes across London and the Home Counties.



### CUSTOMER FOCUS

Over 90% of customers said they would recommend Peabody. Our customers' feedback helps shape the design of our homes and community services based on the needs of each neighbourhood. We value our customers and listen to what they have to tell us. Peabody are proud to have achieved 'Gold' in the independent customer satisfaction awards three times in a row and strive for excellence in all that we do.



### STRONG GROWTH

With a growing pipeline, Peabody continues to invest in building quality new homes with high design standards. We create homes in great locations which are safe, easy to maintain and long-lasting. Peabody delivers long-term returns on investment. With an asset base of £8.3bn, Peabody is well placed to build thousands more top quality, well-maintained homes each year.



### SOCIAL IMPACT

In line with our social purpose, Peabody re-invests its surplus to provide more homes and services. We deliver services to 220,000 residents, supporting customers and the wider communities in which we work. We focus on those who need our help the most, working with people and communities to build resilience and promote wellbeing. We invest around £11m each year through our Community Foundation, to support people to be healthier, wealthier and happier.



### QUALITY DESIGN & SUSTAINABILITY

Peabody's reputation is one of the most respected in the housing industry, renowned for high quality, innovative design. We work with industry experts and continually monitor quality throughout the design, procurement and development process. We aim to make a positive impact on climate change for our residents, communities and the environment, with an ambition to achieve net zero carbon in our new and existing homes by 2050.



### AWARD WINNING

In recent years, Peabody has been recognised and awarded more than 60 prestigious awards, including the Sunday Times 'Homebuilder of the Year' and the Grand Prix award at the Evening Standard New Homes Awards. We also work with award winning partners who share our values, high design standards and focus on great customer experience.





**FRANKHAM WALK**  
Deptford | SE8

**FRANKHAM WALK,  
FRANKHAM ST, LONDON SE8 4BX**



[FRANKHAMWALK.COM](http://FRANKHAMWALK.COM)

Sales agent



Developer



Every care has been taken in the preparation of this brochure. The details contained herein are for guidance only and should not be relied upon as exactly describing any of the particular material illustrated or written by any order under the Consumer Protection from Unfair Trading Regulations 2008. This information does not constitute a contract, part of a contract or warranty. The developer operates a programme of continuous product development. Features, internal and external, may vary from time to time and may differ from those shown in the brochure. Frankham Walk is a marketing name and may not form part of the postal address for these properties. Digital illustrations and any computer generated images are indicative only. Details correct at time of going to print, October 2023.

