



**2 Gordon le Breton Close Plat Douet Road, St. Saviour**  
**£225,000\* (after 25% Andium contribution. Full asking price £300,000)**

**BROADLANDS**  
FINDING YOU A HOME SINCE 1972

## 2 Gordon le Breton Close Plat Douet Road

St. Saviour, Jersey

- Assisted purchase scheme - Andium
- 1 bedroom ground floor apartment
- Spacious 520 sq ft
- No deposit required for your lender
- Eat in kitchen
- Convenient location
- Sole agent
- 1 private allocated parking space
- Call Doug on 07700702585 or [doug@broadlandsjersey.com](mailto:doug@broadlandsjersey.com)



## 2 Gordon le Breton Close Plat Douet Road

St. Saviour, Jersey

First Time Buyer opportunity, 1 bedroom ground floor purpose built apartment with 1 private allocated parking space. Part of the Andium Assisted Purchase scheme, you can benefit from up to 25% deferred payment, making the property as affordable as £225,000 (£300,000 full marketing price). No deposit required due to the Andium bond.

Introducing this 1-bedroom apartment with a Flying Freehold tenure type and the convenience of 1 bathroom and 1 reception room. The property boasts electric heating, double-glazed windows, and 1 private allocated parking space. Situated on a private estate, this apartment is walk-in condition, with mains for electricity, water, and drainage, as well as the added benefit of fiber internet. This property also features communal gardens to the front and rear, offering an outdoor space, and it's just a short stroll from the beach. Convenience is key, with Plat Douet School only a 2-minute walk away and easy access to a good bus route.



**Living**

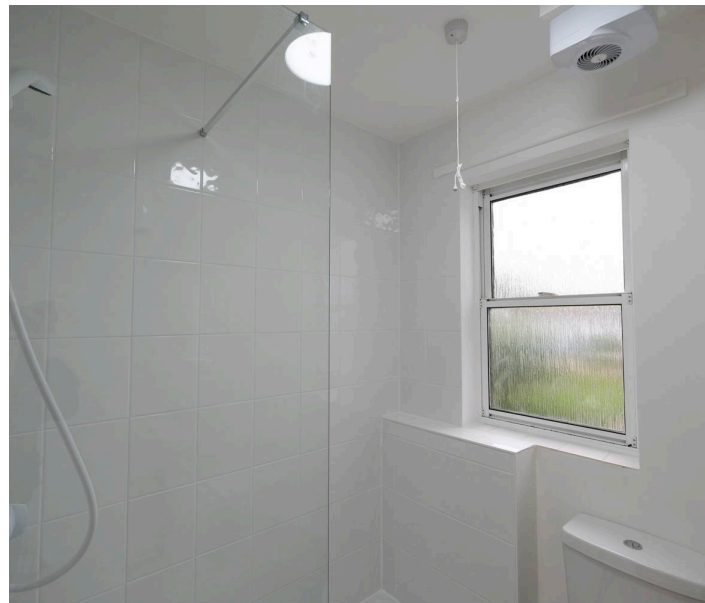
Eat in kitchen with range of high and low kitchen units.  
Generous lounge. Internal store room.

**Sleeping**

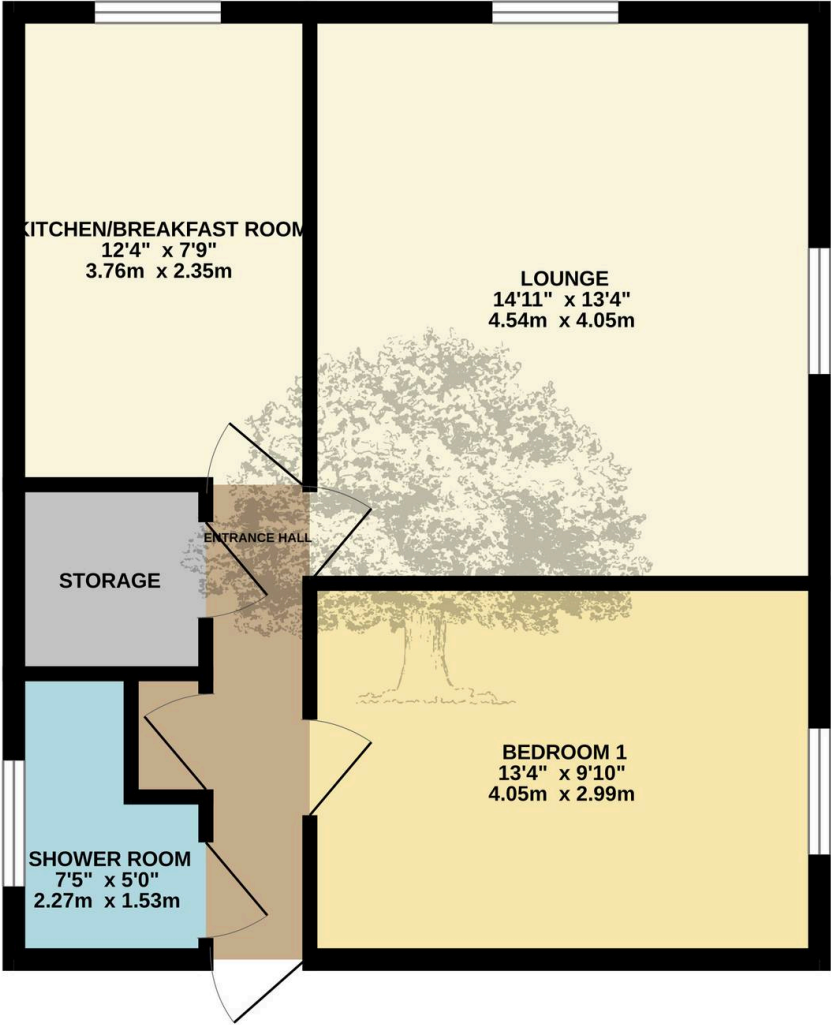
Double bedroom and house bathroom.

**Services**

All main services. Double glazing, electric heating. Service charges £96 pcm.



GROUND FLOOR  
520 sq.ft. (48.3 sq.m.) approx.



TOTAL FLOOR AREA : 520 sq.ft. (48.3 sq.m.) approx.

Whilst every attempt has been made to ensure the accuracy of the floorplan contained here, measurements of doors, windows, rooms and any other items are approximate and no responsibility is taken for any error, omission or mis-statement. This plan is for illustrative purposes only and should be used as such by any prospective purchaser. The services, systems and appliances shown have not been tested and no guarantee as to their operability or efficiency can be given.

Made with Metropix ©2024



## Broadlands

Broadlands Estates, Library Place - JE2 3NL

01534 880770 • [enquiries@broadlandsjersey.com](mailto:enquiries@broadlandsjersey.com) • [www.broadlandsjersey.com/](http://www.broadlandsjersey.com/)

# BROADLANDS

FINDING YOU A HOME SINCE 1972