



## The Street, Liddington

Nr Swindon

Offers in Excess of **£675,000**

**m<sup>c</sup>farlane**  
property.com

# The Street

Liddington, Swindon

"An exceptional opportunity! A prime building plot for a spacious 4-bedroom detached home (2045 sqft), plus a charming 3-bedroom period cottage awaiting renovation and modernisation. Perfect for investors or those looking to create their dream property!"

- Ideal Investment Opportunity
- Building Plot + Planning (4 Bedroom Detached Home 2024Sq Ft)
- Ref: S/24//1147/JP
- Detached Period Cottage (Requires Updating)
- Details on Request



# The Street

Liddington, Swindon

This is a picturesque village and is situated about a mile from the edge of Swindon with a plethora of amenities. This delightful Village is also ideally placed for the neighbouring M4 (junction 15) and the A419 Dual Carriageway.



Council Tax band: F

Tenure: Freehold

EPC Energy Efficiency Rating: D

EPC Environmental Impact Rating: E (Existing Cottage)

**mcfarlane**  
property.com



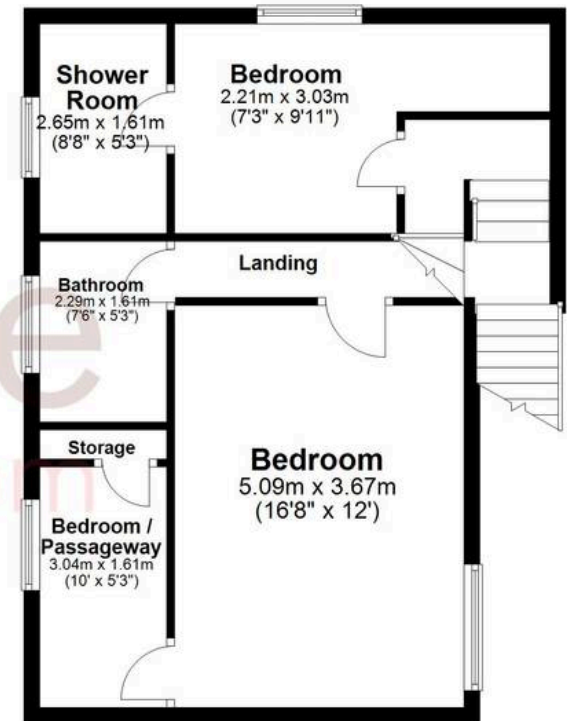
### Ground Floor

Approx. 107.7 sq. metres (1159.4 sq. feet)

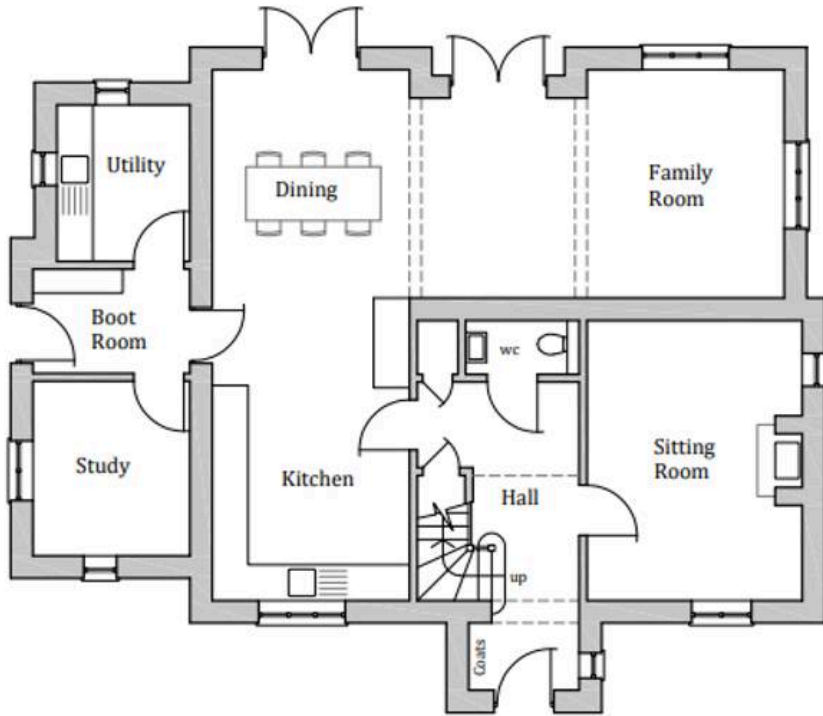


### First Floor

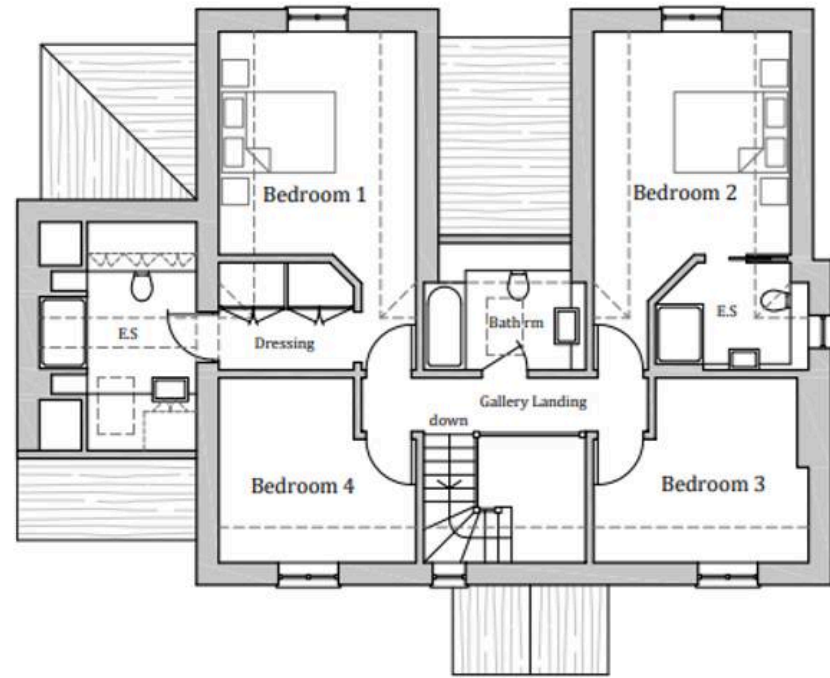
Approx. 48.1 sq. metres (518.1 sq. feet)



Total area: approx. 155.9 sq. metres (1677.6 sq. feet)



Ground Floor Plan



First Floor Plan