



2 Apsley Grove, Wirral, CH63 7TB
£249,995 Freehold


MARTIN&CO

2 Apsley Grove, Bebington

3 Bedrooms, 1 Bathroom

£249,995

- No Onward Chain
- 3 Good size bedrooms
- 2 reception rooms
- Desirable Location
- Downstairs WC
- Close to local Primary, Secondary & Grammar Schools
- Driveway providing off road parking

AGENCY COMMENTS An immaculately presented home, ready to move into and located in a quiet cul-de-sac in the highly sought after area of Bebington.

This house must be viewed to be fully appreciated. Having spacious accommodation throughout, a good size enclosed garden to the rear and ample off road parking.

%epcGraph_c_1_363%



Located in the sought after area of Higher Bebington with close access to local amenities, transport links and sought after local schooling. This well presented home is ideal for any first time buyer or family.

As you enter through the front door into the hallway we have a downstairs WC and access into the main lounge, off the lounge is the dining room with access to the kitchen with a range of wall and base units. The dining room enjoys views over the rear garden accessed via french doors.

To the first floor there are three good size bedrooms, all with ample space for furniture. The bathroom has been fitted with a three piece white suite including WC, wash basin and bath with overhead shower.

To the front of the property we have a low maintenance garden and paved driveway with double gates providing access to the good size rear garden with patio area.

The property also benefits from a newly fitted Bosch boiler with hive control.

This property really is one not to be missed and must be viewed to be appreciated.

Contact Martin & Co to arrange a viewing 0151 6453392.

HALLWAY 3' 7" x 10' 4" (1.09m x 3.15m)

LIVING ROOM 12' 7" x 14' 9" (3.84m x 4.5m)

DINING ROOM 8' 2" x 10' 6" (2.49m x 3.2m)

KITCHEN 7' 3" x 10' 5" (2.21m x 3.18m)

LANDING 6' 0" x 9' 8" (1.83m x 2.95m)

BEDROOM 1 9' 1" x 13' 6" (2.77m x 4.11m)

BEDROOM 2 8' 2" x 11' 11" (2.49m x 3.63m)

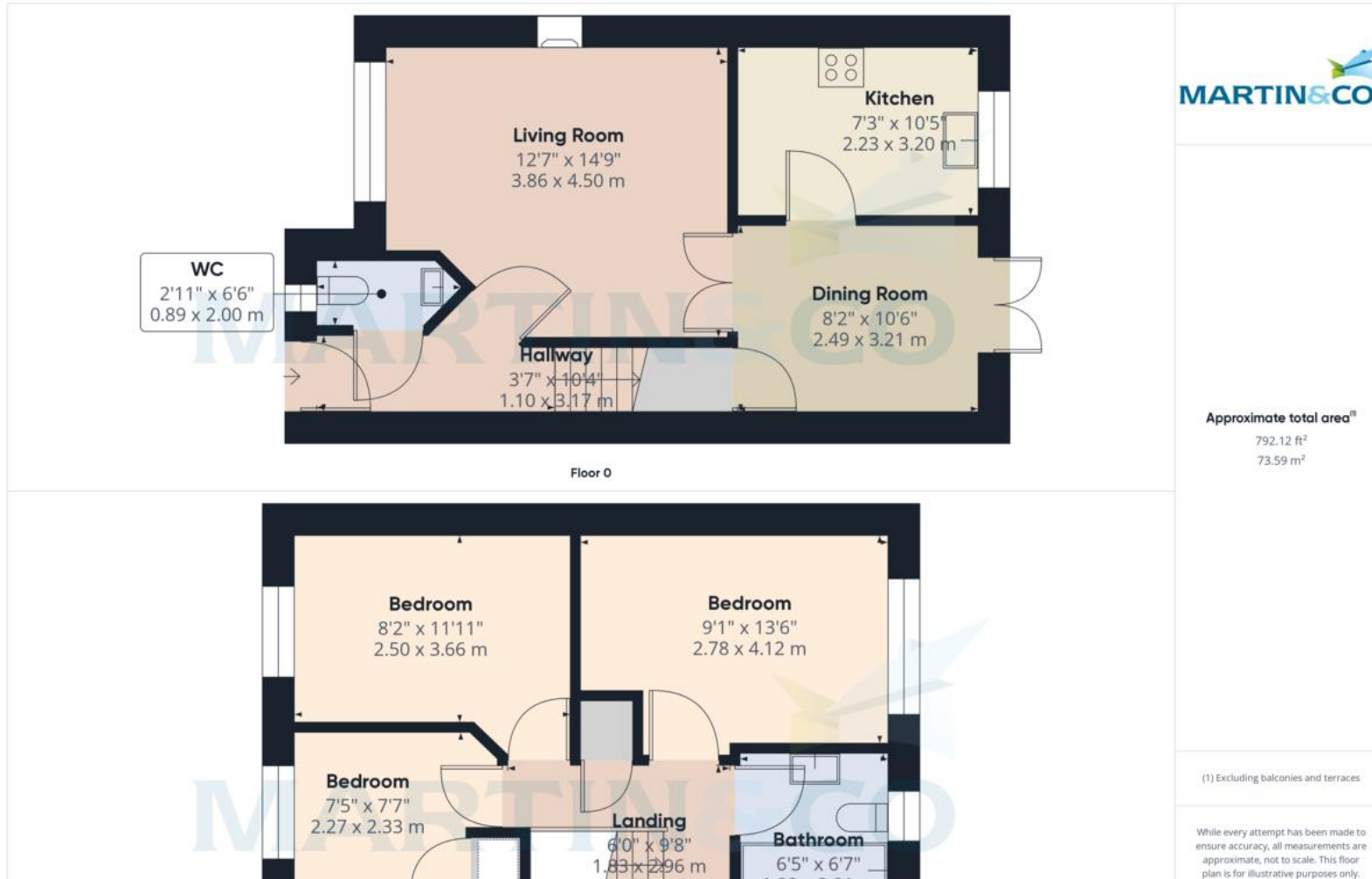
BEDROOM 3 7' 5" x 7' 7" (2.26m x 2.31m)

BATHROOM 6' 5" x 6' 7" (1.96m x 2.01m)









Martin & Co Bebington

15 Church Road • Bebington • Wirral • CH63 7PG
T: 0151 645 3392 • E: wirralmoreton@martinco.com

0151 645 3392

<http://www.martinco.com>

MARTIN&CO

Accuracy: References to the Tenure of a Property are based on information supplied by the Seller. The Agent has not had sight of the title documents. A Buyer is advised to obtain verification from their Solicitor. Items shown in photographs including but not limited to carpets, fixtures and fittings are not included unless specifically mentioned within the sales particulars. They may however be available by separate negotiation. Buyers must check the availability of any property and make an appointment to view before embarking on any journey to see a property. No person in the employment of the agent has any authority to make any representation about the property, and accordingly any information given is entirely without responsibility on the part of the agents, sellers(s) or lessors(s). Any property particulars are not an offer or contract, nor form part of one. **Sonic / Laser Tape:** Measurements taken using a sonic / laser tape measure may be subject to a small margin of error. **All Measurements:** All Measurements are Approximate. **Services Not tested:** The Agent has not tested any apparatus, equipment, fixtures and fittings or services and so cannot verify that they are in working order or fit for the purpose. A Buyer is advised to obtain verification from their Solicitor or Surveyor.