



15 Perrywood Close, Holbury  
£299,950



ANTHONY JAMES  
PROPERTIES





# 15 Perrywood Close

Holbury, Southampton

Tucked away in Holbury, this charming three bedroom terraced house boasts well-proportioned bedrooms as well as downstairs living areas. The modern, refurbished bathroom adds a touch of luxury, while the double glazing throughout ensures a warm and inviting atmosphere all year round. With the convenience of driveway parking for two cars, you'll never have to worry about finding a space again. The large kitchen and additional utility room provide ample space for cooking up a storm or tackling those household chores. Plus, the conservatory and outside canopy area offer the perfect spot to relax with a book or enjoy a cup of coffee while soaking up the natural light.

Step outside into the expansive outdoor space that this property has to offer. The canopy area extending from the conservatory not only provides some much-needed shade on a sunny day but also serves as a handy storage space for your outdoor essentials. The garden, mainly laid to lawn, features a spacious patio area ideal for hosting summer barbeques or alfresco dining.

Council Tax band: B

Tenure: Freehold



1 Southward House  
Dibden Purlieu SO45 4PT



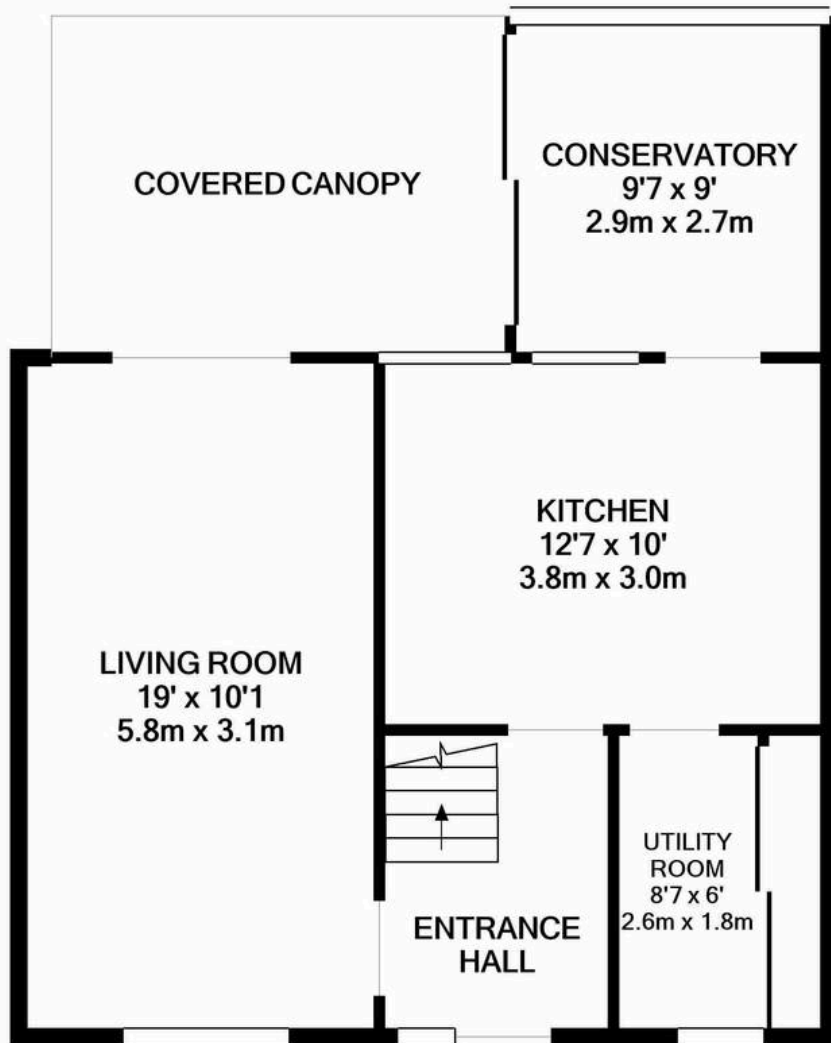
T: 02380 844405

info@anthonyjamesproperties.co.uk

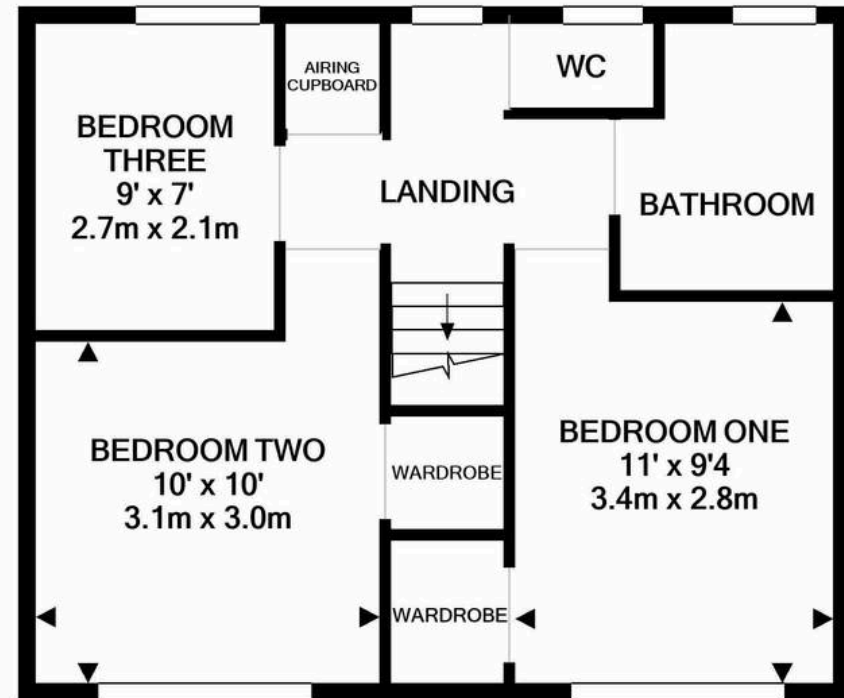








GROUND FLOOR



1ST FLOOR

Whilst every attempt has been made to ensure the accuracy of the floor plan contained here, measurements of doors, windows, rooms and any other items are approximate and no responsibility is taken for any error, omission, or mis-statement. This plan is for illustrative purposes only and should be used as such by any prospective purchaser. The services, systems and appliances shown have not been tested and no guarantee as to their operability or efficiency can be given