



22 Vale Crescent North, Nottingham - NG8 3PR

Guide Price £210,000



22 Vale Crescent North

Nottingham, Nottingham

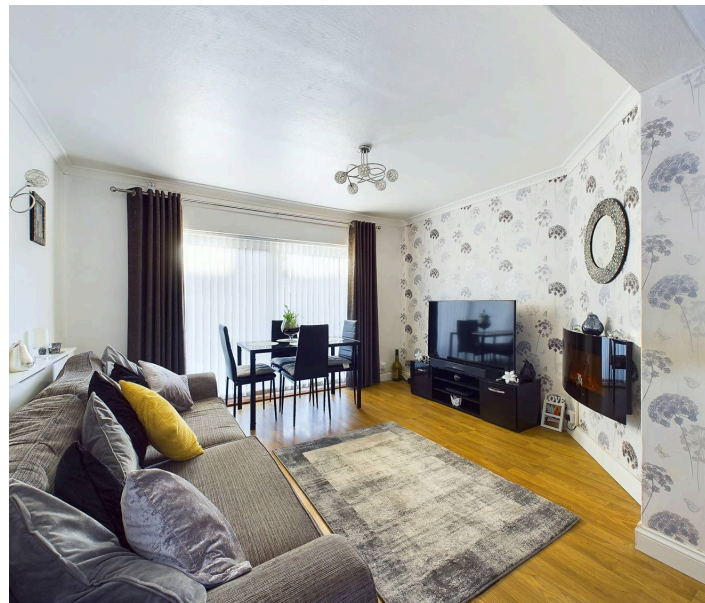
Well-maintained mid-terraced family home in quiet residential area. 3 beds, modern kitchen, welcoming lounge, landscaped garden, driveway, close to amenities & schools. Council Tax band: A

Tenure: Freehold

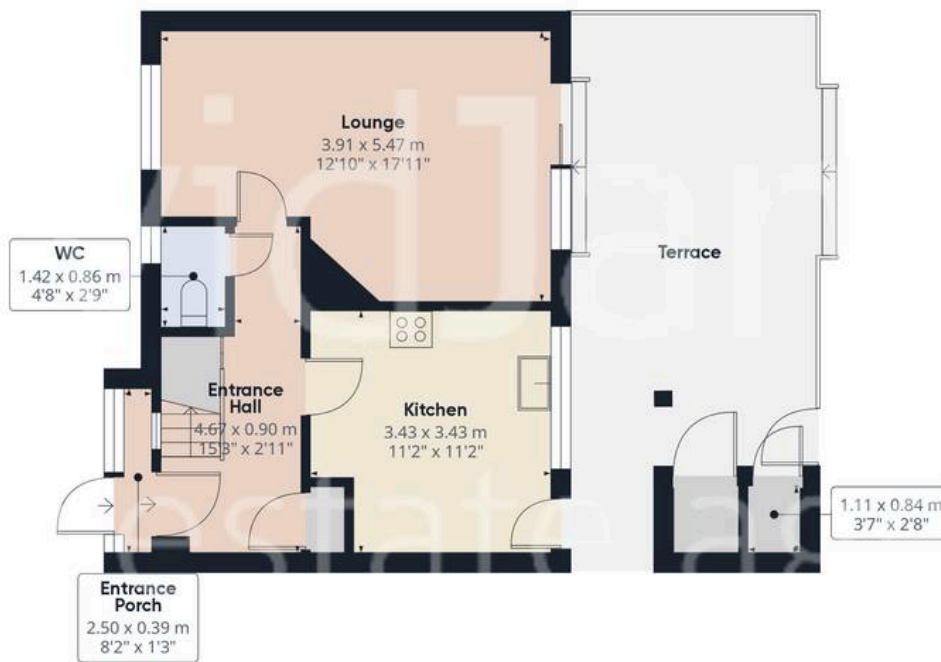
EPC Energy Efficiency Rating: D

EPC Environmental Impact Rating: E

- Mid-terraced family home
- Three bedrooms including two double bedrooms and a versatile third bedroom/study
- Spacious lounge/dining room with oak effect flooring, feature electric fireplace and large patio doors onto rear garden
- Modern breakfast kitchen with a range of integrated appliances and direct garden access
- Well appointed bathroom and separate downstairs Wc for added convenience
- Gas central heating, UPVC double glazing
- Landscaped rear garden laid to lawn, benefitting from new decking and fencing
- Generous outbuilding for storage or a potential utility area
- Large block paved driveway
- Close proximity to a wide range of local amenities, schools and public transport links







Floor 0 Building 1

Approximate total area⁽¹⁾

81.85 m²

881.03 ft²



Floor 1 Building 1

(1) Excluding balconies and terraces

While every attempt has been made to ensure accuracy, all measurements are approximate, not to scale. This floor plan is for illustrative purposes only.

Calculations are based on RICS IPMS 3C standard.

GIRAFFE360



David James Estate Agents

98-100 Front Street, Arnold - NG5 7EJ

0115 955 5550 • arnold@david-james.com • www.david-james.com/

These particulars are produced in good faith and are set out as a general guide only. Measurements are approximate and floor plans are for illustrative purposes only. Services have not been tested. We have established professional relationships with third-party suppliers for the provision of services to Clients, details of which can be found on the property listing page on our website.