



13 Tanbridge Park, Horsham

Guide Price £290,000

13 Tanbridge Park

Horsham, Horsham

A delightful two bedroom first floor flat in a sought after location within walking distance to Horsham Town Centre. Accommodation includes, entrance hall providing access to: sitting room with window to the back of the property and period features, spacious dual aspect kitchen with ample worktop space and a range of wall and floor units plus space for a kitchen table. Both bedrooms are doubles, the principle bedroom benefits from an en-suite shower room with built in storage, the second bedroom could be used as a home office and has views out to the rear of the property.

The property includes allocated parking for one car and visitors parking spaces around the development along with communal gardens. Located in the popular Tanbridge Park which is within walking distance to Horsham Town Centre, mainline train station and countryside walks.

Offered to the market chain free.

Council Tax band: D

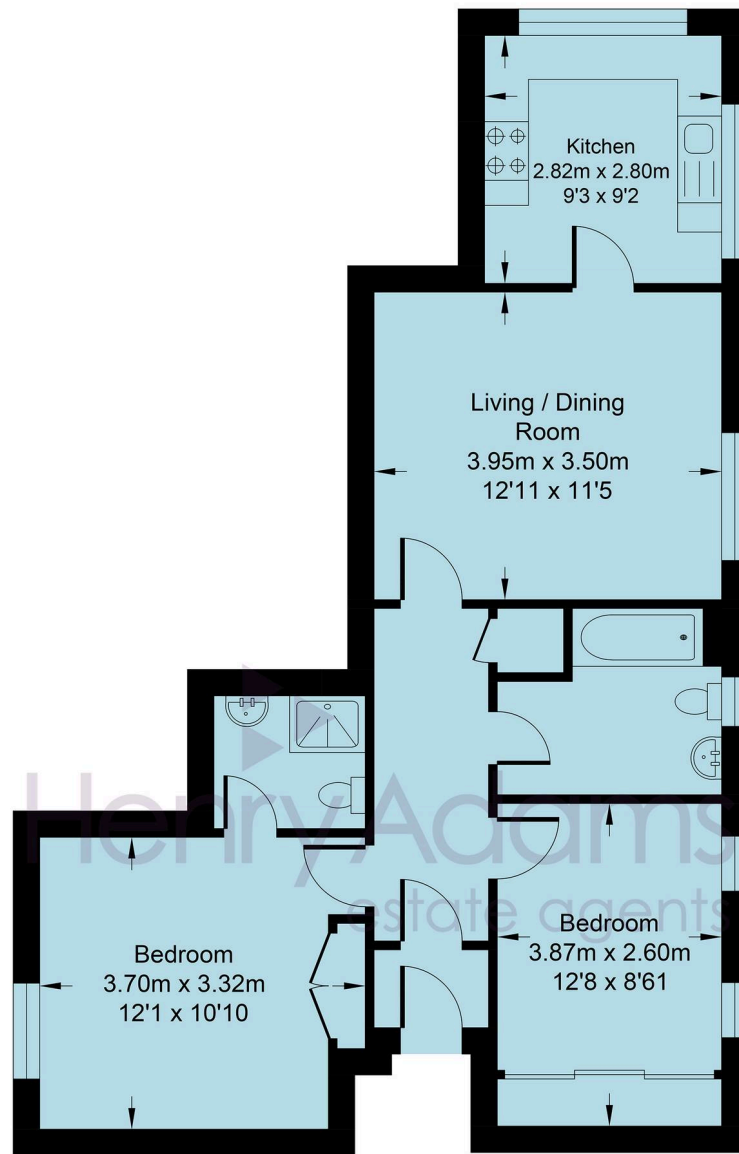
Tenure: Leasehold

EPC Energy Efficiency Rating: C

EPC Environmental Impact Rating: C

- Two Bedrooms
- Two Bathrooms
- En-Suite Shower Room
- Communal Gardens
- Close to Horsham Town Centre
- In the development of a converted school
- Allocated Parking for One Car
- Close to Train Station





FIRST FLOOR



Tanbridge Park

Approximate Area = 688.1sq ft / 63.9 sq m

Total = 688.1 sq ft / 63.9 sq m

For identification only - not to scale



Henry Adams - Horsham

Henry Adams HRR Ltd, 50 Carfax, Horsham - RH12 1BP

01403 253271

horsham@henryadams.co.uk

www.henryadams.co.uk/

Agents Note - Our particulars are for guidance only and are intended to give a fair overall summary of the property. They do not form part of any contract or offer, and should not be relied upon as a statement or representation of fact. Measurements, areas and distances are approximate only. Photographs may include lifestyle shots and pictures of local views. No undertaking is given as to the structural condition of the property, or any necessary consents or the operating ability or efficiency of any service, system or appliance. Please ask if you would like further information, especially before you travel to the property.