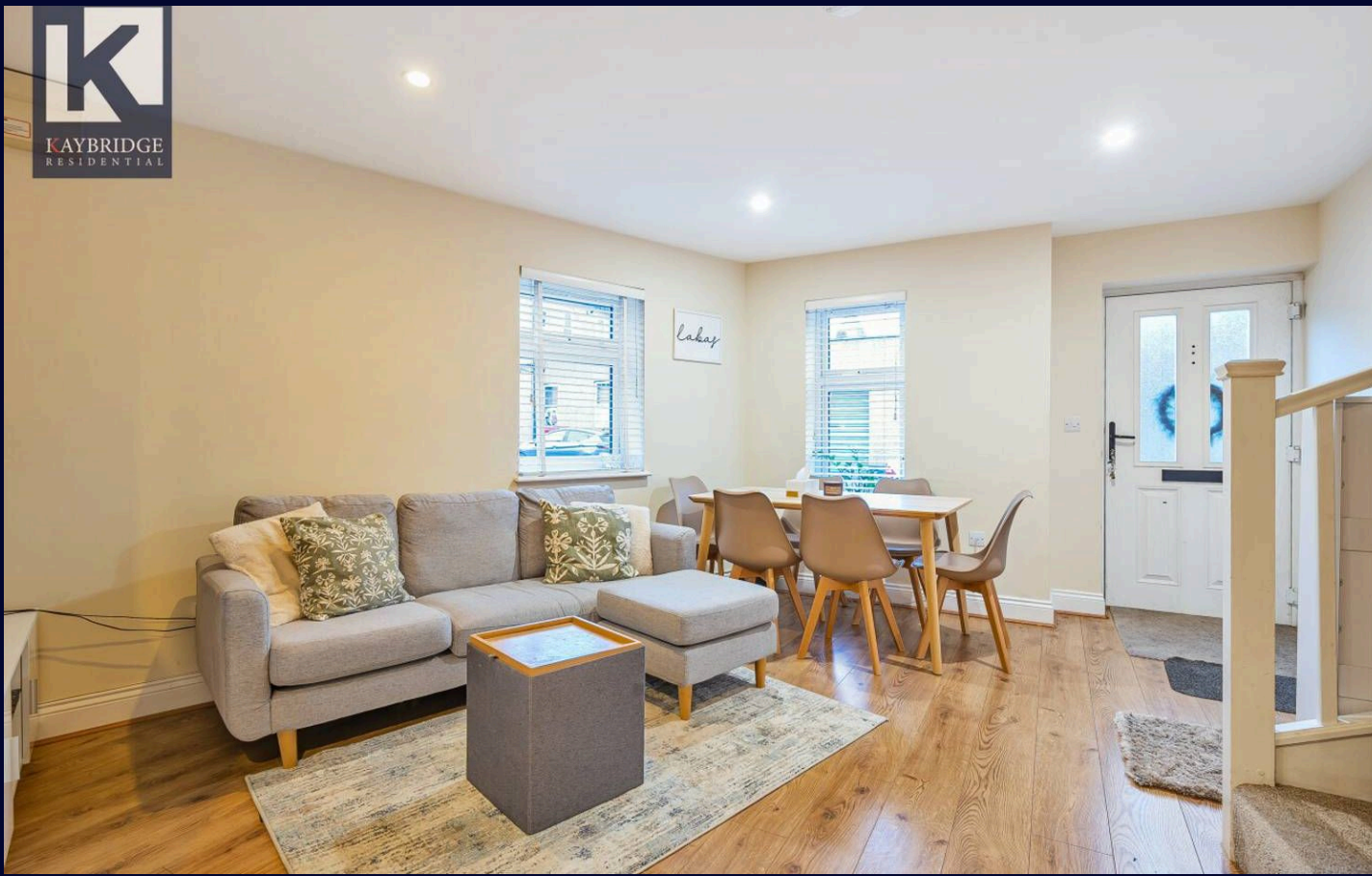




Lindsay Road, Worcester Park

Worcester Park

Guide price £400,000



Lindsay Road

Worcester Park, Worcester Park

- Chain completed
- High Street Location
- Communal Gardens
- Secure Gated Car Parking
- 0.5 Miles From Mainline Train Station

***Guide price £400,000 to £425,000 ***Presenting a splendid opportunity to acquire a charming end of terrace house in a sought-after location, boasting modern comforts and impeccable design. This elegant two-bedroom property offers a harmonious blend of contemporary living with stylish finishes throughout.

Upon entering, you are greeted by a welcoming ambience, leading into a spacious living area with abundant natural light. The modern fitted kitchen is a focal point, equipped with modern appliances and ample storage space for culinary enthusiasts.

Both bedrooms are generously sized, providing a tranquil retreat for residents. The property further benefits from secure gated car parking, offering peace of mind for vehicle owners.



Situated in a convenient location close to local amenities and transport links, this property presents a prime location for urban living. Ideal for professionals, first-time buyers, or those looking to downsize, this end of terrace house embodies comfort, convenience, and style. Book your viewing today to secure this exceptional residence.

Council Tax band: D

Tenure: Freehold

EPC Energy Efficiency Rating: C

EPC Environmental Impact Rating:

Local Area

Worcester Park's attractive & bustling High Street enjoys a host of familiar brands including: Waitrose, Sainsburys, Pizza Express, Costa, Caffè Nero, Boots, WH Smiths & Superdrug as well as an array of independents. There is a broad selection of pubs & bars and a diverse array of eateries to satisfy most culinary requests. Young families are attracted to Worcester Park's plethora of high performing schools and no less than seven parks including the vast and picturesque Nonsuch Park, formally the site of Henry VIII's Nonsuch Palace. Come and explore Worcester Park for yourself, we love it and hope you will too!!!!

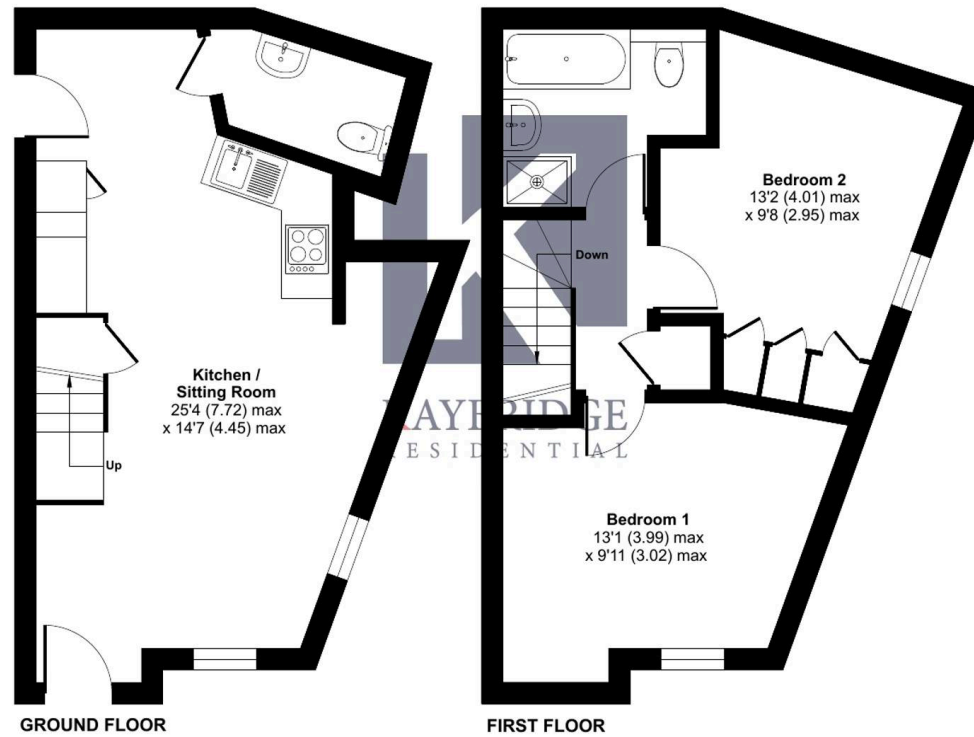




Lindsay Road, Worcester Park, KT4

Approximate Area = 670 sq ft / 62.2 sq m

For identification only - Not to scale





K
KAYBRIDGE
RESIDENTIAL

Kaybridge Residential Epsom

Kaybridge Residential Estate Agents, 23 Stoneleigh Broadway - KT17 2JE

02080040474 • info@kbridge.co.uk • www.kaybridgeresidential.co.uk/



KAYBRIDGE
RESIDENTIAL