



**22 Ullswater Crescent, London**  
London

Guide Price **£1,750,000**



## 22 Ullswater Crescent

London, London

Council Tax band: E

Tenure: Freehold

EPC Energy Efficiency Rating: C

EPC Environmental Impact Rating: C

- Five Bedroom Semi-Detached Family Home
- Located Within Close Proximity to Kingston Town Centre
- Four Modern Bathrooms
- Off-Street Parking
- Over 3,000 Square Feet of Living Space
- Close to Richmond Park
- 3,423 sq ft

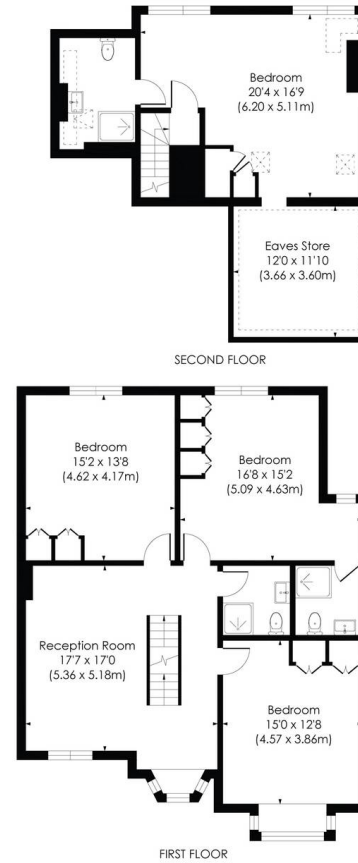
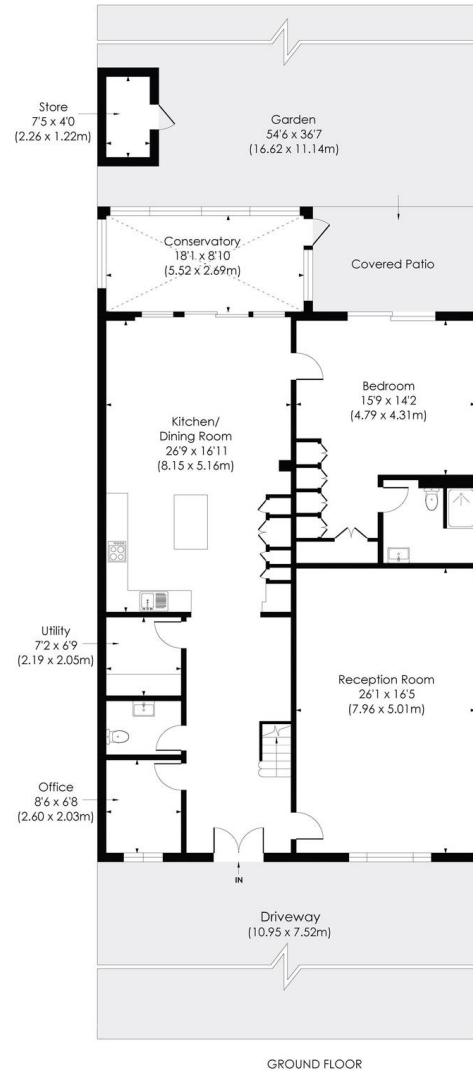


# ULLSWATER CRESCENT, SW15

Approx. Gross Internal Floor Area

**3416 Sq. ft/317.35 Sq. m (Including reduced height)**

**3264 Sq. ft/303.25 Sq. m (Excluding reduced height)**



© Pixangle Property Marketing Ltd. info@pixangle.com Tel: 0208 870 2118



## Chesterfield Gordon

The Engine Room, 18 The Power Station, London - SW11 8BZ

0203 336 1433 • [enquiries@chesterfieldgordon.com](mailto:enquiries@chesterfieldgordon.com) • [www.chesterfieldgordon.com/](http://www.chesterfieldgordon.com/)