



## 63 Windward Lane, Dawlish

£695,000 Freehold

Detached House with Annexe • Four Bedrooms & Bathroom Upstairs • Annexe With Living Room, Bedroom & Bathroom • Lounge/Diner with doors to Terrace • Kitchen/Breakfast Room • Wonderful Sea Views • Corner Plot Gardens • Balcony & Terrace With Sea Views • Driveway & Double Garage • EPC - E

### Contact Us...

01626 815815

teignmouthsales@chamberlains.co

6 Wellington Street  
Teignmouth  
TQ14 8HH

  
chamberlains  
the key to your home



Stepping inside, the entrance porch leads through to the hallway with a turning staircase to the first floor with a window to the front just a few stairs up and a further window up the staircase to the side. In the hallway there is a cloaks cupboard and a door to the lounge/diner and a door to the kitchen. The lounge/diner has a door at the lounge end through to the kitchen, a stone feature fireplace wall with grate and a door out to the side terrace and a window to the rear, both with sea views. The dining end also has a door out to the side terrace with sea views and a window to the front. There is a downstairs WC with a frosted glazed window to the side, low level flush WC and wash hand basin in a unit with worktop and cupboards under. The kitchen/breakfast room with rear aspect has limed oak base and wall units with working surfaces, sink unit, plumbing for dishwasher, space for fridge/freezer, built in electric hob with cooker hood over and a wine rack/shelving recess. Off the kitchen there is a side lobby where there is a door to the front and an inner door to the side Annexe. On entering the Annexe area there is an entrance area with a door to the rear and Velux window. There is a utility room off which could make an annexe kitchenette and there is a living room, double bedroom and bathroom. The utility room comprises sink with cupboards above and below, plumbing for a washing machine, the Baxi boiler and a Velux window.

On entering the Annexe area there is an entrance area with a door to the rear and Velux window. There is a utility room off which could make an annexe kitchenette and there is a living room, double bedroom and bathroom. The utility room comprises sink with cupboards above and below, plumbing for a washing machine, the Baxi boiler and a Velux window. The Annexe living room has a window to the rear with sea views and a window to the side. The double bedroom has a rear aspect and the bathroom comprises panelled bath with shower over, wash hand basin, low level WC and window to the side. On the first floor there is a landing with a ladder style staircase to a loft area, split in to two rooms with small windows at both ends, one of which has stunning views. There are four bedrooms on the first floor, two double and two single. The two double bedrooms are at the side, both with doors out to a balcony with superb sea views across to the sea wall to Teignmouth, one also with a window to the front and the other with a window to the rear with a sea view towards Exmouth. The main bedroom has a range of built in dark wood wardrobes, bedside drawers and shelves. There is a single bedroom to the front and a larger single bedroom to the rear. The upstairs bathroom comprises double walk in shower, close coupled WC and wash hand basin inset in vanity unit with cupboard below. Some updating is required.

**MEASUREMENTS:**

Lounge 15'5" x 12'11" (4.71m x 3.93m), Dining Room 15'10" x 10'10" (4.83m x 3.31m), Kitchen 12'11" x 12'1" (3.93m x 3.68m), Bedroom 13'11" x 13'1" (4.23m x 3.98m), Bedroom 11'10" x 10'5" (3.36m x 3.18m), Bedroom 12'4" x 8'0" (3.75m x 2.44m), Bedroom 10'4" x 6'9" (3.15m x 2.06m)

**ANNEXE ACCOMMODATION:** Lounge 16'7" x 13'5" (5.05m x 4.08m), Bedroom 13'5" x 12'10" (4.08m x 3.65m), Utility 15'1" x 6'7" (4.60m x 2.00m)

Garage 21'11" x 18'7" (6.67m x 5.67m)

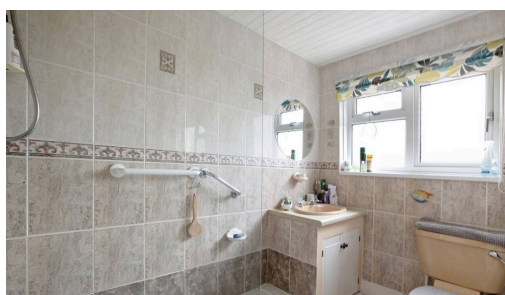


Tenure Freehold

Council Tax Band G - £3985.33

Mains Services- Gas, Electric and Water

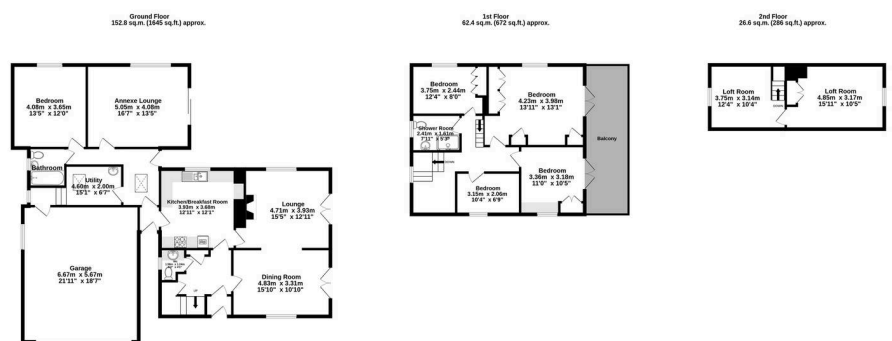
Broadband- Ultrafast 1000 Mbps (According to OFCOM)



Holcombe is between Teignmouth and Dawlish and is on a bus route to both towns. Smugglers Lane nearby leads down to Smugglers beach with a walk along the sea wall to Teignmouth. There are further coastal paths nearby towards Dawlish. There is a pub and village hall in Holcombe and further countryside views and walks beyond the village. Teignmouth is a popular seaside resort on a stretch of red sandstone along the South Devon Coast. It is a coastal town that has a historic port and working harbour, with a Victorian Pier and promenade. There are sandy sea and river beaches excellent for sailing and water sports with two sailing clubs and a diving school. Teignmouth has a comprehensive range of facilities including supermarkets, local independent shops, a selection of bars and restaurants, a small hospital, the Den with a Green Flag Awarded children's play park and both state & independent schools. The cathedral city of Exeter is within easy commuting distance as are the main road routes, the M5, A30 and the A38.



- Detached House with Annexe
- Four Bedrooms & Bathroom Upstairs
- Annexe With Living Room, Bedroom & Bathroom
- Lounge/Diner with doors to Terrace
- Kitchen/Breakfast Room
- Wonderful Sea Views
- Corner Plot Gardens
- Balcony & Terrace With Sea Views
- Driveway & Double Garage
- EPC - E



**TOTAL FLOOR AREA : 241.9 sq.m. (2603 sq.ft.) approx.**  
 Whilst every attempt has been made to ensure the accuracy of the floorplan contained here, measurements of doors, windows, stairs and any other items are approximate and no responsibility is taken for any error, omission or mis-statement. This plan is for illustrative purposes only and should be used as such by any prospective purchaser. The services, systems and appliances shown have not been tested and no guarantee as to their operability or efficiency can be given.  
 Made with Metropex ©2024

