

# Crucible Homes



Brown Lane  
Sheffield, S1 2NH

TO LET  
£1000pcm

## Overview

SPACIOUS TWO BEDROOM  
APARTMENT

SHEFFIELD CITY CENTRE

AVAILABLE NOW

PLENTY OF STORAGE

MODERN KITCHEN AND BATHROOM

CLOSE TO AMENITIES



## Description

**SUMMARY DESCRIPTION** Available to rent now is this spacious and charming two bedroom apartment located in central Sheffield at the popular Butcher Works complex, within walking distance to the train station and plenty of amenities, ideal for a young professional or couple.

The accommodation briefly comprises; entrance hallway, living/dining kitchen with built in oven, hob, extractor fan and dishwasher, bathroom with three piece suite and full tiling to the walls and floor, and two double bedrooms both with fitted wardrobes.

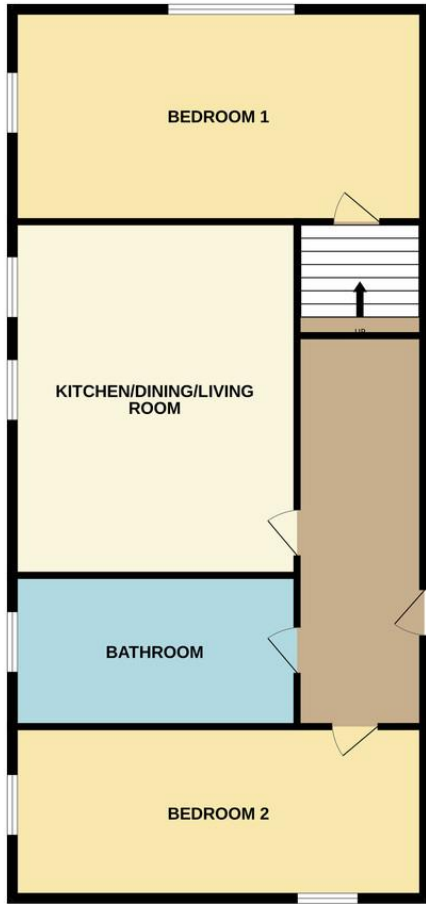
There is no direct parking available with the property but there is plenty of on road parking or secure car parks nearby.

Contact the office today for a viewing.



GROUND FLOOR  
1109 sq.ft. (103.0 sq.m.) approx.

%epcGraph\_c\_1\_265%



TOTAL FLOOR AREA : 1109 sq.ft. (103.0 sq.m.) approx.  
Whilst every attempt has been made to ensure the accuracy of the floorplan contained here, measurements of doors, windows, rooms and any other items are approximate and no responsibility is taken for any error, omission or mis-statement. This plan is for illustrative purposes only and should be used as such by any prospective purchaser. The services, systems and appliances shown have not been tested and no guarantee as to their operability or efficiency can be given.  
Made with Metropix ©2024

