



  
**Andrew Pearce**  
PINNER

OAKDENE CLOSE, PINNER, HA5 4EQ £700,000



This beautifully presented **THREE / FOUR BEDROOM**, end-of-terrace house is situated within an award-winning mews-style development, ideally located within the desirable Westfield Park Estate. The property offers a perfect blend of comfort and convenience, being just a short distance from the vibrant amenities of Hatch End and station.

The house is in excellent decorative order and features a range of appealing attributes, including gas-fired central heating, double-glazed windows throughout, and a guest cloakroom. The spacious lounge/dining room leads to a double-glazed conservatory, creating a bright and inviting living space. The kitchen is equipped with a range of fitted units, offering plenty of storage and preparation space.

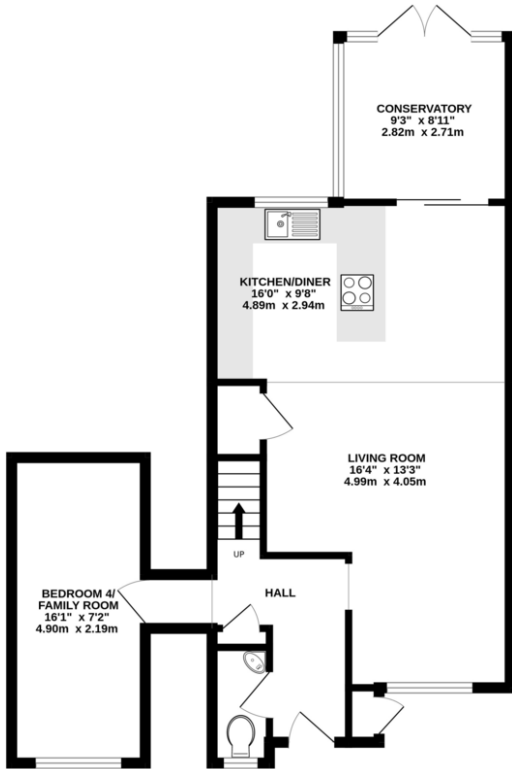
The property offers flexible living, with the fourth bedroom/family room, providing additional versatility. There are three further well-proportioned bedrooms, all benefiting from natural light, along with a modern bathroom suite that exudes a stylish and contemporary feel.



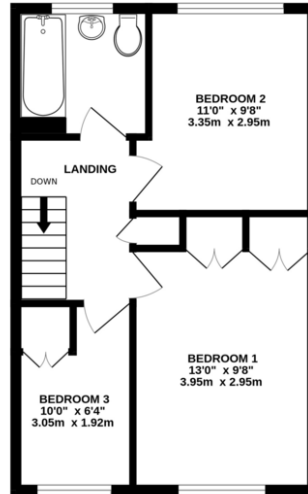
Outside, the property enjoys a charming decked rear garden—ideal for outdoor entertaining—along with a well-maintained lawned front garden, enhancing the overall appeal. This home is being offered with the added benefit of a Sole Agent listing.

A wonderful opportunity to acquire a spacious and well-maintained home in a highly sought-after location.

GROUND FLOOR  
657 sq.ft. (61.0 sq.m.) approx.



1ST FLOOR  
410 sq.ft. (38.1 sq.m.) approx.



TOTAL FLOOR AREA: 1067 sq.ft. (99.2 sq.m.) approx.

Whilst every attempt has been made to ensure the accuracy of the floorplan contained here, measurements of doors, windows, rooms and any other items are approximate and no responsibility is taken for any error, omission or mis-statement. This plan is for illustrative purposes only and should be used as such by any prospective purchaser. The services, systems and appliances shown have not been tested and no guarantee as to their operability or efficiency can be given.  
Made with Metropix 02024



