

Basset Avenue, Salford

Salford



£195,000

Basset Avenue

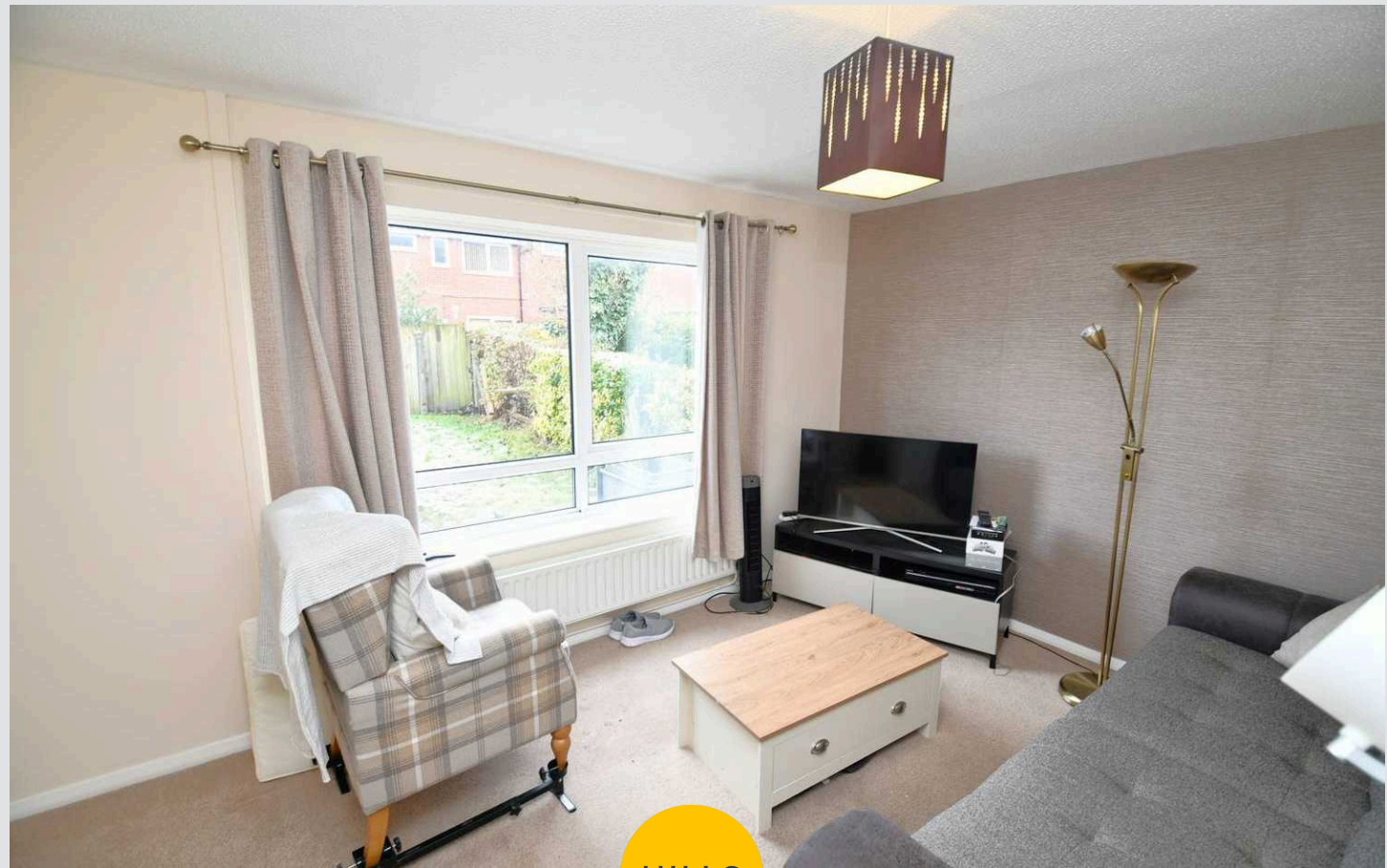
Salford

****Spacious Three Bedroom Terraced Property
Benefitting from a Modern Kitchen Diner, a Driveway
for Off-Road Parking and a Garden to the Rear!****

Council Tax band: A

Tenure: Freehold

- Spacious Three Bedroom Terraced Property
- Plenty of Storage Throughout
- Three Generously-Sized Bedrooms
- Modern Kitchen Diner
- Cosy Family Lounge
- Driveway to the Front for Off-Road Parking
- Garden to the Rear Complete with Laid-to-Lawn Grass and Paving
- Close to Transport Links into Salford Quays, Media City and Manchester City Centre
- Ideal First Time Home or Investment - Viewing is Highly Recommended!



HILLS



Entrance Hallway

Complete with a ceiling light point, wall mounted radiator and carpet flooring.

Lounge

13' 7" x 10' 3" (4.15m x 3.13m)

Complete with a ceiling light point, double glazed window and wall mounted radiator. Fitted with carpet flooring.

Kitchen / Diner

12' 9" x 11' 5" (3.88m x 3.48m)

Featuring complementary fitted units with integral hob and oven. Complete with a ceiling light point, double glazed window and wall mounted radiator. Fitted with cushioned flooring.

Rear Hallway

Complete with a ceiling light point and wall mounted radiator.

Landing

Complete with a ceiling light point and carpet flooring.

Bedroom One

11' 5" x 10' 5" (3.49m x 3.17m)

Complete with a ceiling light point, double glazed window and wall mounted radiator. Fitted with carpet flooring.

Bedroom Two

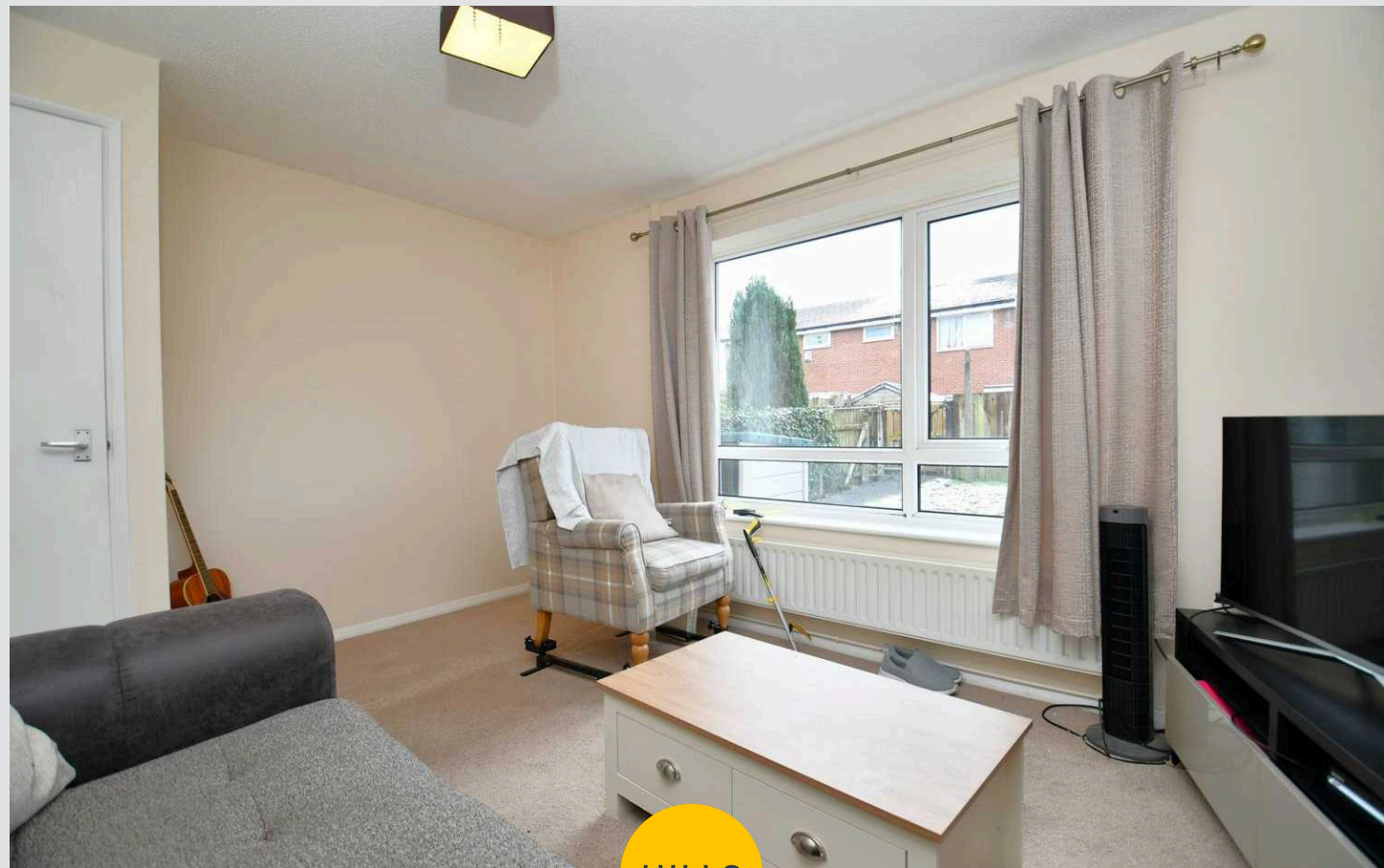
12' 8" x 7' 10" (3.87m x 2.40m)

Complete with a ceiling light point, double glazed window and wall mounted radiator. Fitted with carpet flooring.

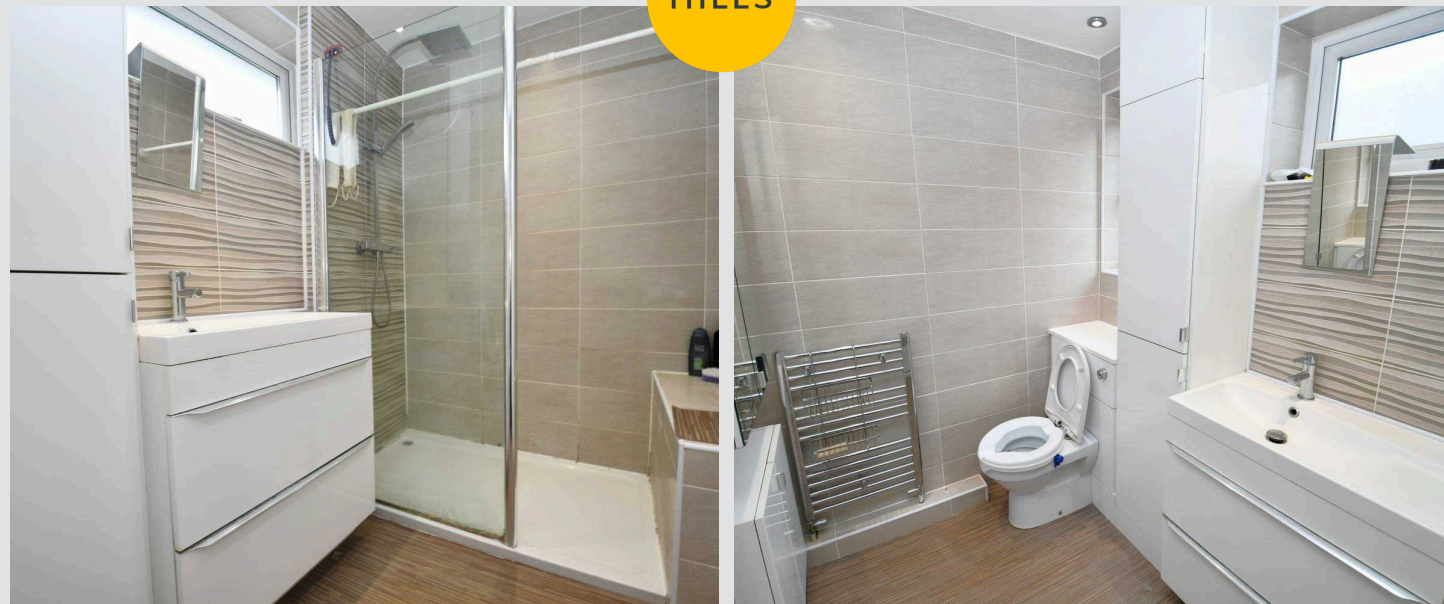
Bedroom Three

7' 8" x 7' 1" (2.33m x 2.16m)

Complete with a ceiling light point, double glazed window and wall mounted radiator. Fitted with carpet flooring.



HILLS



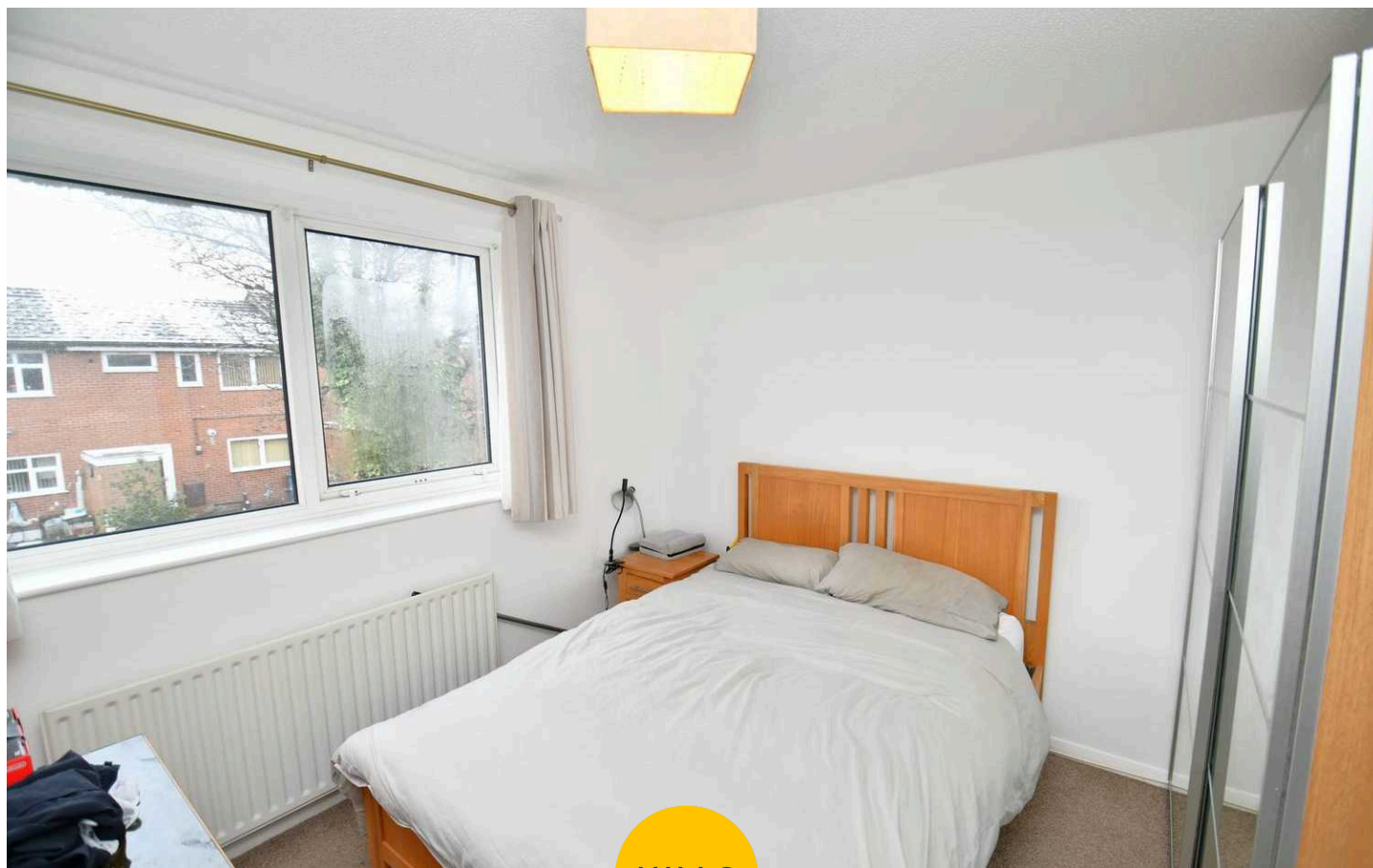
Shower Room

9' 6" x 5' 4" (2.89m x 1.62m)

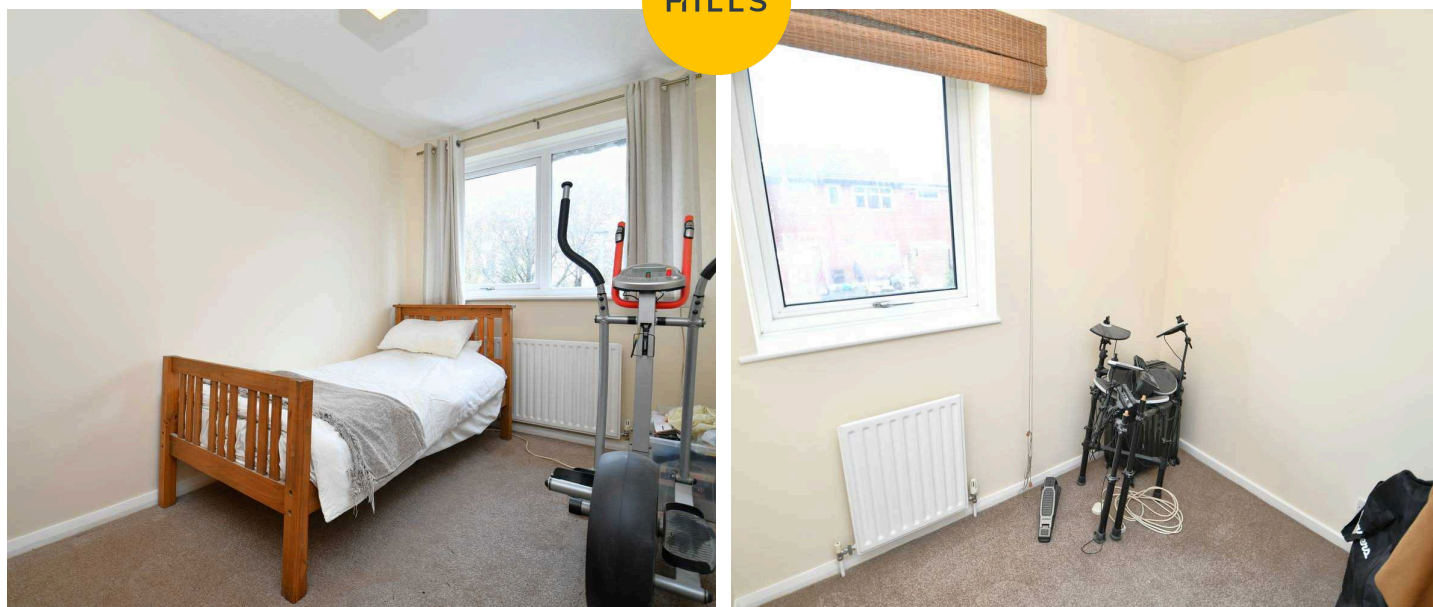
Featuring a three piece suite including a shower, hand wash basin and W.C. Complete with ceiling spotlights, two double glazed windows, tiled walls and cushioned flooring.

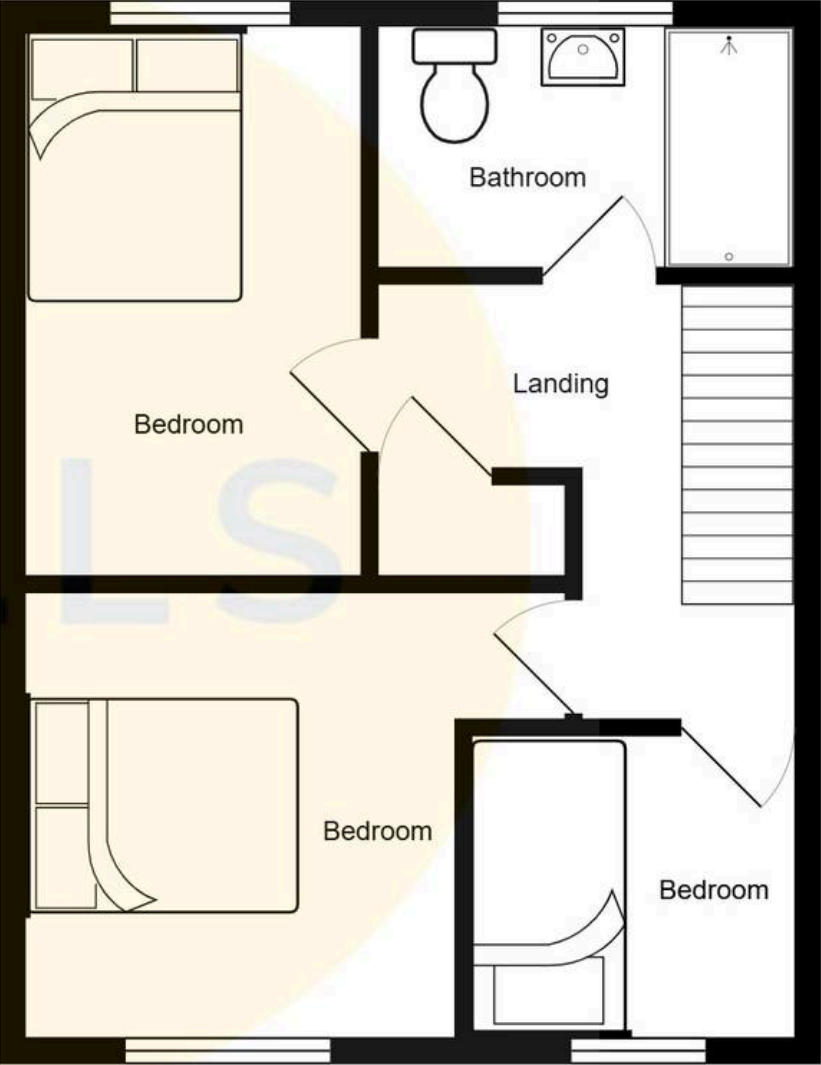
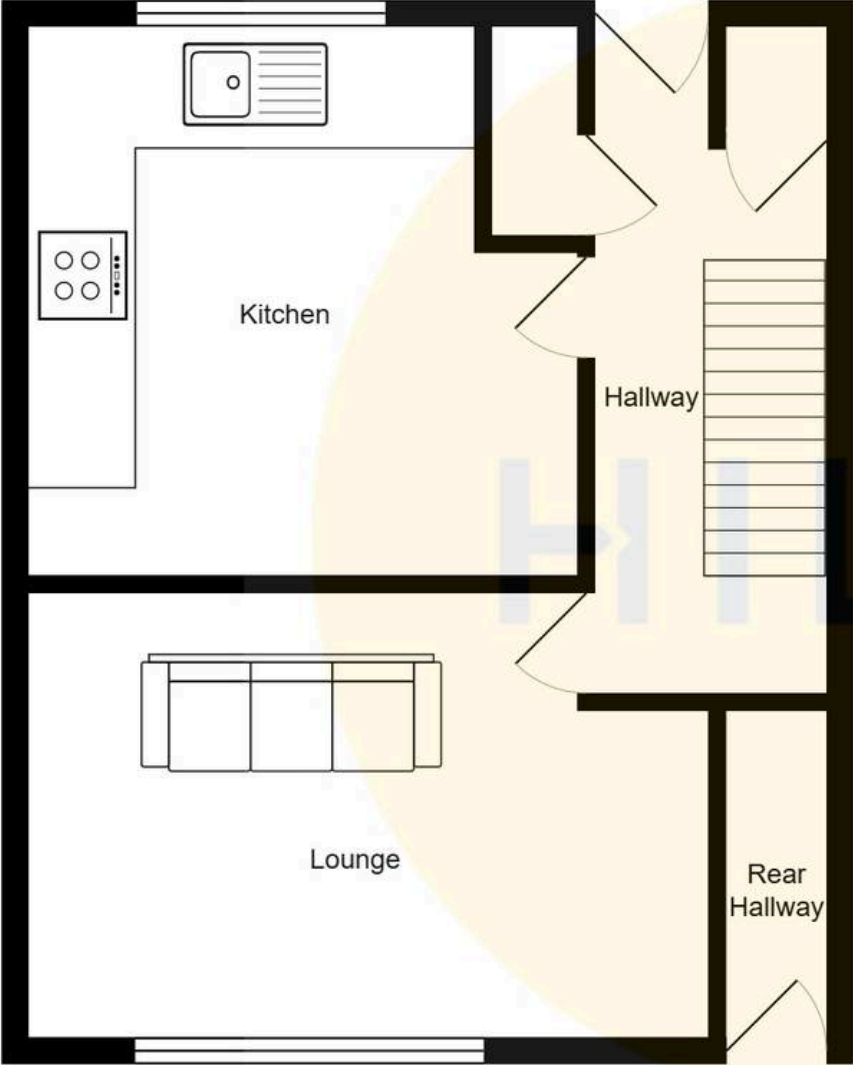
External

To the front of the property is a driveway. To the rear of the property is a garden with laid-to-lawn grass, paving and a brick built outbuilding for storage.



HILLS







Hills | Salfords Estate Agent

Hills Residential, Sentinel House Albert Street – M30 0SS

0161 707 4900

sales@hills.agency

www.hills.agency/



THE PROPERTY MISDESCRIPTIONS ACT 1991 The Agent has not tested any apparatus, equipment, fixtures and fittings or services and so cannot verify that they are in working order or fit for the purpose. A Buyer is advised to obtain verification from their Solicitor or Surveyor. References to the Tenure of a Property are based on information supplied by the Seller. The Agent has not had sight of the title documents. A Buyer is advised to obtain verification from their Solicitor. You are advised to check the availability of this property before travelling any distance to view. Every effort and precaution has been made to ensure these particulars are correct and not misleading but their accuracy is not guaranteed nor do they form part of any contract. If there is any point which is of particular importance to you, please contact us and we will provide any information you require. This is advisable, particularly if you intend to travel some distance to view the property. The mention of any appliances and services within these details does not imply that they are in full and efficient working order. These particulars are in draft form awaiting Vendors confirmation of their accuracy. These details must therefore be taken as a guide only.