



3 Park Close, Nottingham - NG3 5FB

Guide Price £195,000



3 Park Close

Nottingham, Nottingham

Well presented 2-bed mid-terrace on a quiet cul-de-sac. Features spacious lounge, dining kitchen, fresh decor, well-appointed bathroom, private garden, garage. Ideal for first-time buyers or investors. Ready to move in.

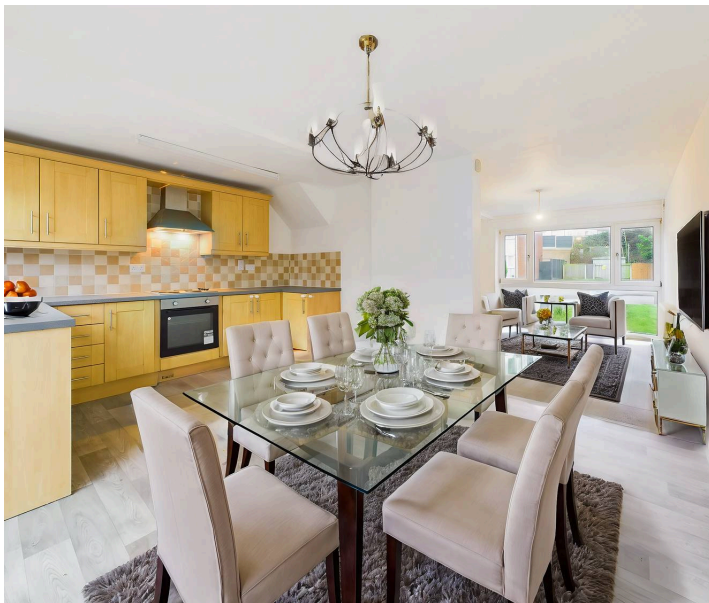
Council Tax band: A

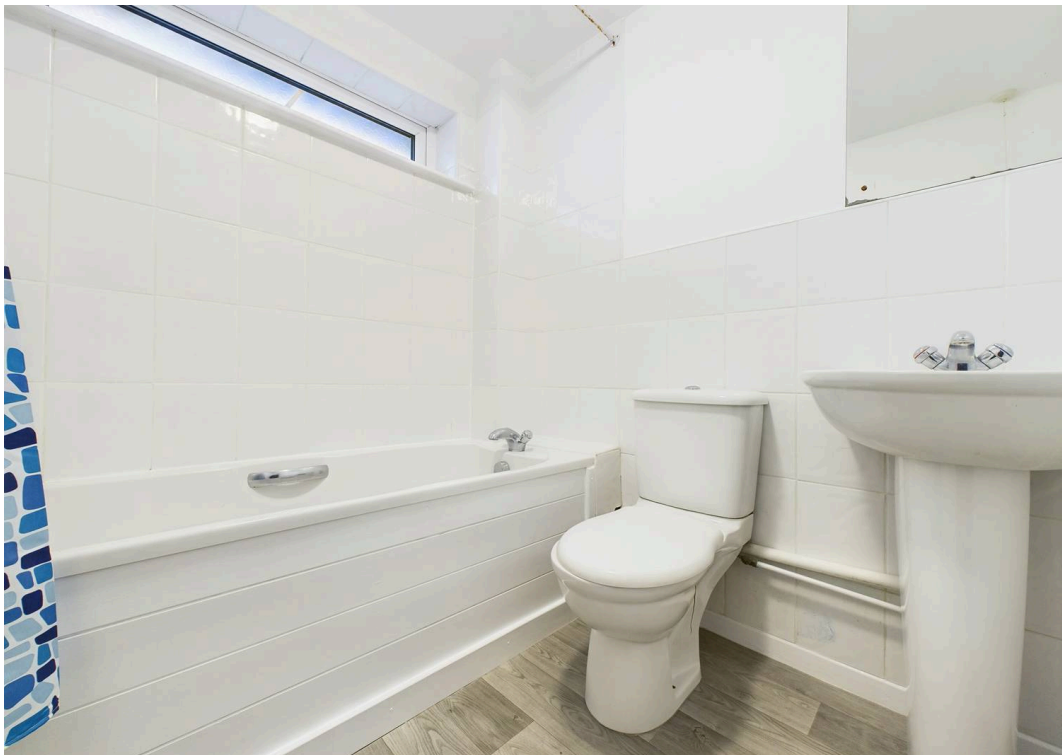
Tenure: Freehold

EPC Energy Efficiency Rating: D

EPC Environmental Impact Rating: D

- Well presented mid-terraced property, available with no upward chain for a hassle free move
- Two generous double bedrooms, bedroom one with two built in wardrobe spaces
- Well proportioned lounge with feature fireplace
- Generous dining kitchen with ample worktop space and patio doors leading to the rear garden
- Well appointed bathroom
- Freshly decorated throughout with new flooring
- Garage
- Private rear garden, lawned and enclosed to all sides with modern fencing
- Cul-de-sac location
- Close to a wide range of local amenities, schools and public transport links







Floor 0



Floor 1

Approximate total area⁽¹⁾

65.47 m²
704.7 ft²

Reduced headroom

1.23 m²
13.23 ft²

(1) Excluding balconies and terraces

Reduced headroom

..... Below 1.5 m/5 ft

While every attempt has been made to ensure accuracy, all measurements are approximate, not to scale. This floor plan is for illustrative purposes only.

Calculations are based on RICS IPMS 3C standard.



David James Estate Agents

David James Estate Agents, 45B Plains Road - NG3 5JU

0115 962 4213 • mapperley@david-james.com • www.david-james.com

These particulars are produced in good faith and are set out as a general guide only. Measurements are approximate and floor plans are for illustrative purposes only. Services have not been tested. We have established professional relationships with third-party suppliers for the provision of services to Clients, details of which can be found on the property listing page on our website.