



The Attic, 3 High Street, Oxshott. KT22 0JN

£1,500 pcm

DAVIES
PROPERTY PARTNERS



The Attic, 3 High Street

Oxshott. KT22 OJN

A superb first floor two bedroom maisonette in the heart of Oxshott Village that has been refurbished to a high standard throughout.

The property is accessed by its own private front entrance and is well balanced with comfortable sized rooms throughout.

The living room overlooks the front of the building and is a large bright space with a feature fireplace. The galley kitchen has new parquet flooring and has access to the rear of the building leading down to Oakshade Road. The bathroom has been fitted with stylish contemporary fittings with a shower over the bath. The main bedroom is a comfortable double and the second bedroom is a smaller double room.

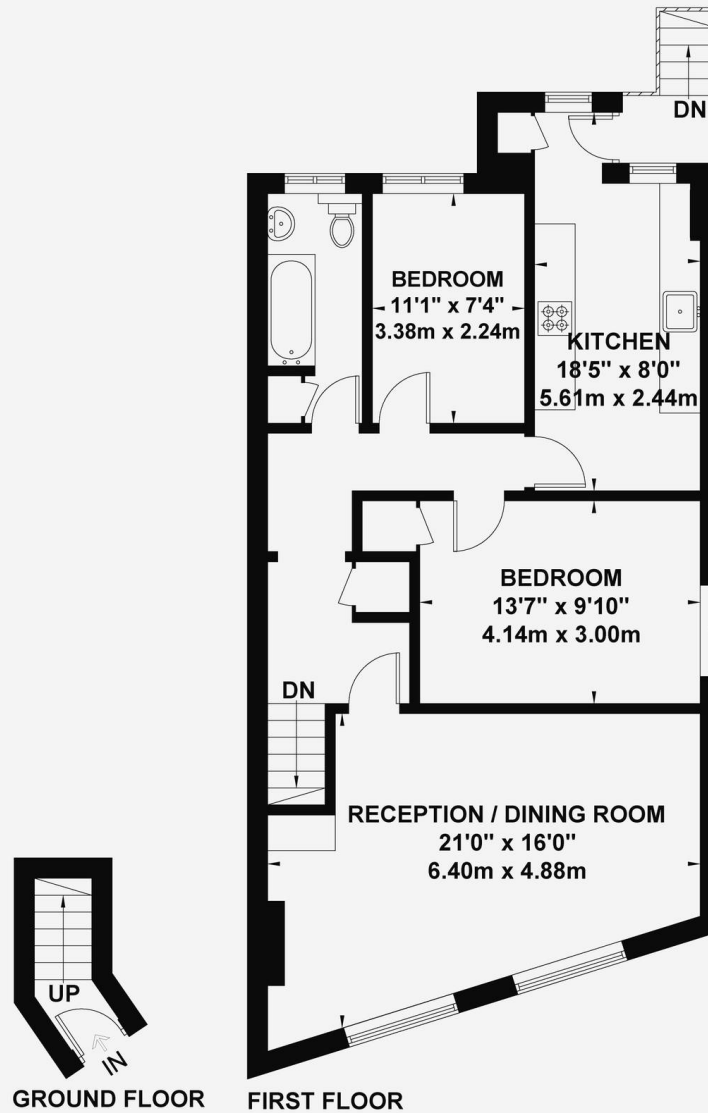
There is no allocated parking but permit free street parking can be found on the adjoining roads.

EPC Rating: D



High Street

Approximate Gross Internal Area
Ground Floor = 2.1 sq m / 22 sq ft
First Floor = 76.9 sq m / 827 sq ft
Total = 79 sq m / 849 sq ft



Viewmedia @ 2021
Viewmedia.co.uk

Whilst every attempt has been made to ensure the accuracy of this floor plan, measurements of doors, windows and rooms are approximate and no responsibility is taken for any error or omission. This illustration is for identification purpose only. Measured and drawn accordance with RICS guidelines. Not drawn to scale, unless stated. Dimensions shown are to the nearest 3" and are to the points indicated by the arrow heads.