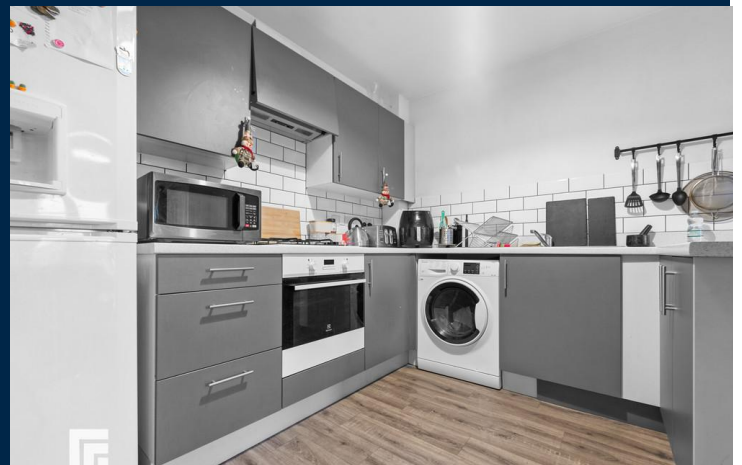




**75 FFORDD PENRHYN**  
**BARRY CF62 5DH**

ASKING PRICE OF  
**£164,950**



### FIRST FLOOR APARTMENT



**2**



**2**



**2**



**1**

\*\*\* NEW \*\*\* MGY are delighted to offer to the market this modern first floor apartment situated on the popular Quays Development in Barry Waterfront. Within walking distance to local beaches, supermarkets and The Goodsheds. The property briefly comprises communal entrance, doors and stairs to all floors, entrance hall, kitchen/lounge, two bedrooms (master en suite) and a bathroom. Offered as a perfect First Time Buy or Investment property and with No Chain.

**TENURE: FREEHOLD**

**COUNCIL TAX BAND: C**

**FLOOR AREA APPROX: 553 SQ FT**

**VIEWING: STRICTLY BY APPOINTMENT**

#### **OUTSIDE**

One allocated parking space.

#### **LEASE DETAILS**

999 year lease from 1st January 2015. Service Charge approx. £1,589 per annum. Ground Rent approx. £110 per annum.

#### **COMMUNAL ENTRANCE**

Entered via security entrance system, Stairs to all floors.

#### **KITCHEN/ LOUNGE**

20' 1" x 10' 11" (6.12m x 3.33m)

Open plan Kitchen/Lounge are to comprise a fitted kitchen with a range of base and wall units with rolled edge laminated work surfaces incorporating stainless steel sink and drainer with mixer taps over. Four burner gas hob and electric oven with extractor over. Recess and plumbing for appliance and space for fridge/freezer. Ceramic tile to splash back areas. Vinyl flooring. Breakfast bar of similar finish to work surface. Open to Lounge Area with fitted carpet. Radiator. Double glazed window.

#### **BEDROOM ONE**

13' 7" x 8' 3" (4.14m x 2.51m)

Main double bedroom with double glazed window to the front. Fitted carpet. Door to ..

#### **EN-SUITE**

With suite to comprise closed cistern w.c, wash hand basin and glazed shower enclosure with shower insitu. Radiator. Vinyl flooring.

#### **BEDROOM TWO**

11' 2" x 10' 0" (3.4m x 3.05m)

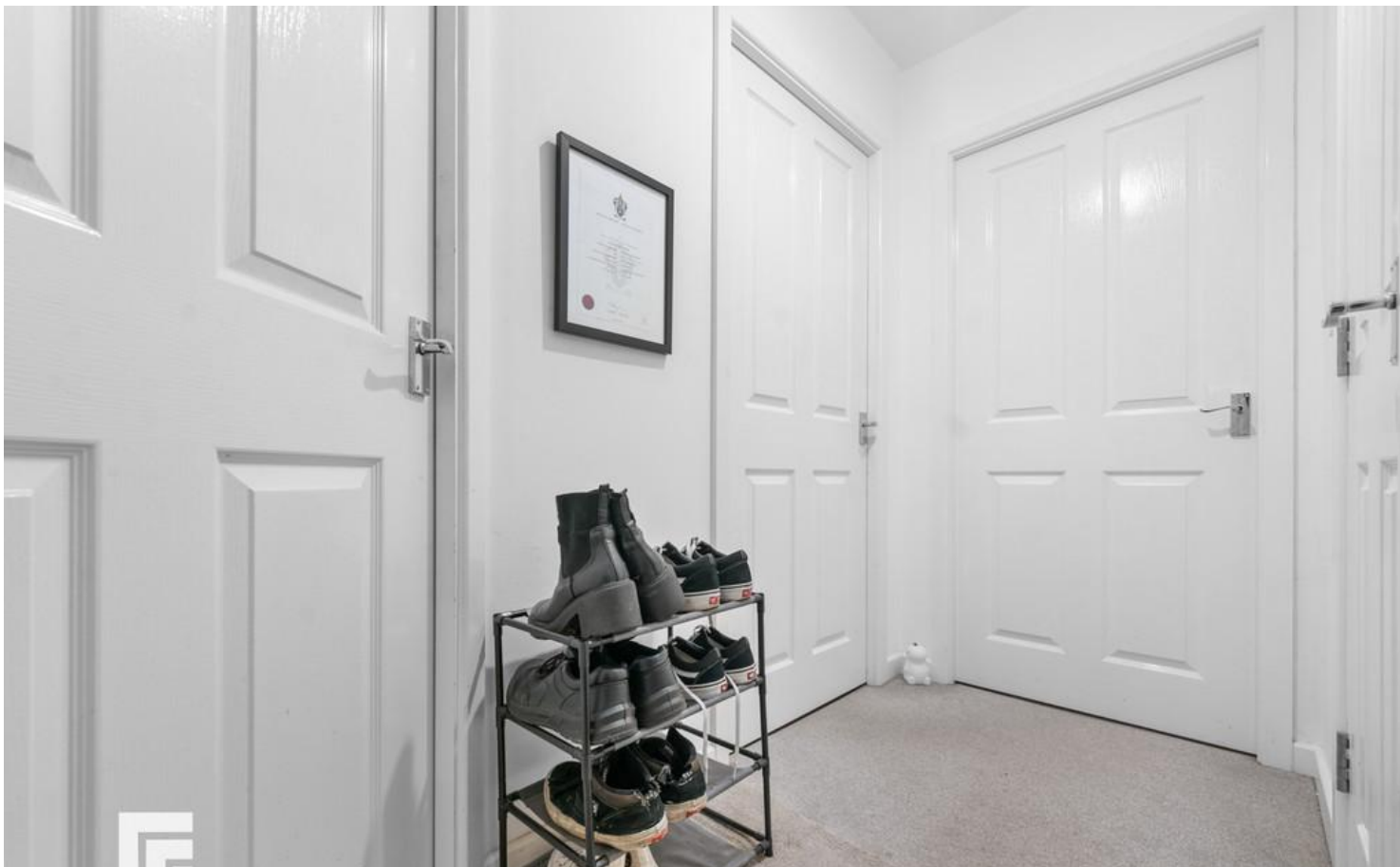
Second bedroom with double glazed window to the front. Fitted carpet. Radiator.

#### **BATHROOM**

With suite to comprise panel bath, close coupled w.c and wash hand basin. Radiator. Vinyl flooring.



75 FFORDD PENRHYN, FFORDD PENRHYN, , BARRY, CF62 5DH

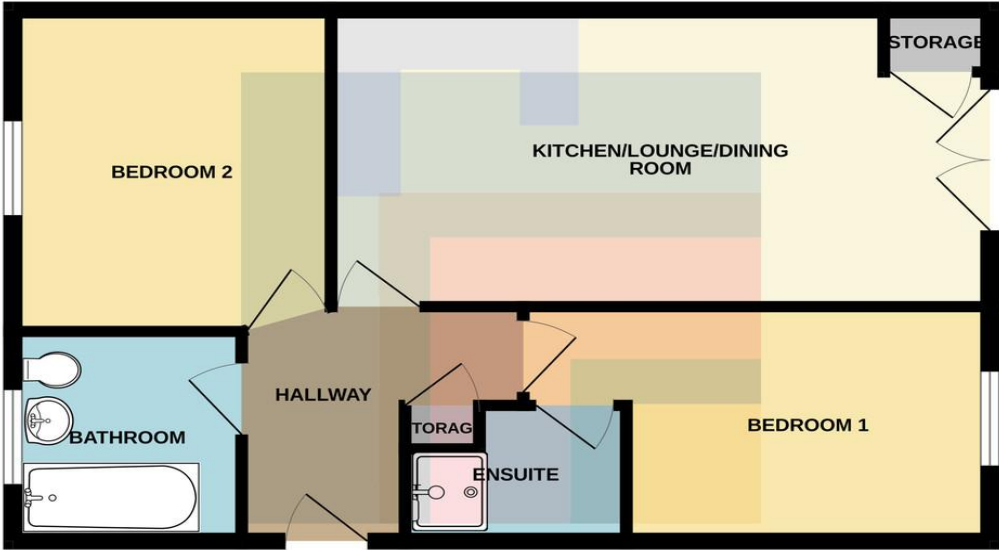


MGY.CO.UK



# 75 FFORDD PENRHYN, FFORDD PENRHYN, , BARRY, CF62 5DH

FIRST FLOOR  
553 sq.ft. (51.4 sq.m.) approx.



TOTAL FLOOR AREA : 553 sq.ft. (51.4 sq.m.) approx.  
Whilst every attempt has been made to ensure the accuracy of the floorplan contained here, measurements of doors, windows, rooms and any other items are approximate and no responsibility is taken for any error, omission or mis-statement. This plan is for illustrative purposes only and should be used as such by any prospective purchaser. The services, systems and appliances shown have not been tested and no guarantee as to their operability or efficiency can be given.  
Made with Metropix ©2025

Score	Energy rating	Current	Potential
92+	A		
81-91	B	85 B	85 B
69-80	C		
55-68	D		
39-54	E		
21-38	F		
1-20	G		

**BARRY** 01446 744750

106 Broad Street, Barry, South Glamorgan, CF62  
7AJ



**Important Notice:** These particulars are prepared for guidance only and do not form whole or any part of any offer or contract. Whilst the particulars are given in good faith, they are not to be relied upon as being a statement or representation of fact. They are made without responsibility on the part of MGY Ltd or Vendor/lessor and the prospective purchaser/lessee should satisfy themselves by inspection or other wise as to their accuracy. Neither MGY Ltd nor anyone in their employ, or the vendor/lessor, imply, make or give any representation/warranty whatsoever in relation to this property.

**MGY.CO.UK**