



3 Bedroom Semi-Detached House located in Tiptree.

Find us on..



JOHN ALEXANDER
ESTATE AGENTS

Anchor Road Tiptree Colchester CO5 0AL



3



1



1



TBC



Guide Price £350,000

FULL DESCRIPTION

OVERVIEW

We are delighted to offer this three bedroom semi-detached house which is being offered with NO CHAIN. This well presented home benefits from having an enclosed rear garden, garage and driveway.

ENTRANCE HALL

Stairs to first floor, radiator.

LOUNGE

15' 3" x 12' 9" (4.65m x 3.89m)

Double glazed window to front, radiator, built in cupboard.

KITCHEN/DINER

16' 2" x 9' 7" (4.93m x 2.92m)

One and a half bowl single drainer sink unit with cupboards under, matching base and eye level cupboards, roll top work surfaces, built in oven, hob and extractor, space for washing machine and fridge, radiator, double glazed windows and door to rear.

LANDING

Double glazed window to side, access to loft.

BEDROOM ONE

13' 3" x 10' 0" (4.04m x 3.05m)

Double glazed window to rear, radiator.

BEDROOM TWO

11' 2" x 10' 0" (3.4m x 3.05m)

Double glazed window to front, radiator.

BEDROOM THREE

7' 9" x 5' 10" (2.36m x 1.78m)

Double glazed window to front, radiator.

BATHROOM

Panelled shower bath with guard, pedestal wash basin, low level WC, airing cupboard housing gas boiler, down lighters to ceiling, obscure double glazed window to side, chrome heated towel rail.

OUTSIDE

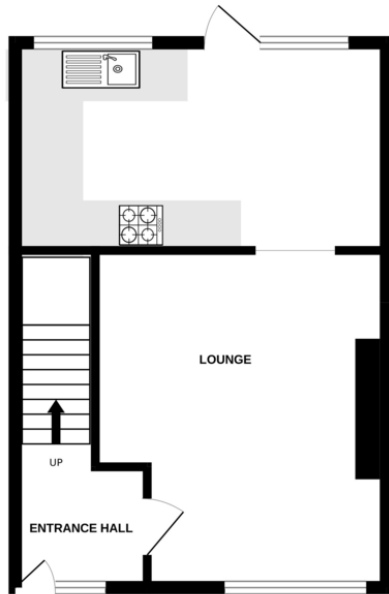
To the front aspect the garden is shingled with a driveway to the side providing ample off road parking leading to a detached garage.

The rear garden is laid to lawn with a patio area, shed and outside tap.

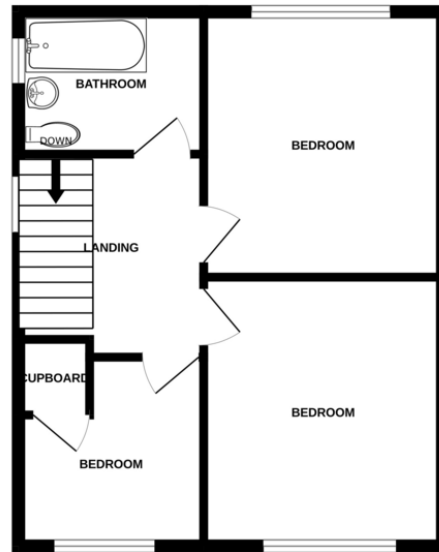


FLOORPLAN

GROUND FLOOR



1ST FLOOR



Whilst every attempt has been made to ensure the accuracy of the floorplan contained here, measurements of doors, windows, rooms and any other items are approximate and no responsibility is taken for any error, omission or mis-statement. This plan is for illustrative purposes only and should be used as such by any prospective purchaser. The services, systems and appliances shown have not been tested and no guarantee as to their operability or efficiency can be given.
Made with Metropix ©2025

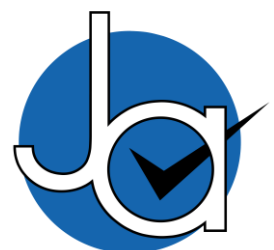
DIRECTIONS

CONTACT
1 Church Road
Tiptree
Colchester
Essex
CO5 0LG

E info@john-alexander.co.uk

T 01621 814334 www.john-alexander.co.uk

Find us on..



JOHN ALEXANDER
ESTATE AGENTS