

FOR SALE



Beechwood Lodge, Clifton
Asking Price Of £50,000


MARTIN & CO



Beechwood Lodge, Clifton

1 Bedroom, 1 Bathroom

Asking Price Of £50,000

- One bedroom
- Ground floor apartment
- No chain
- Popular development
- Close to town

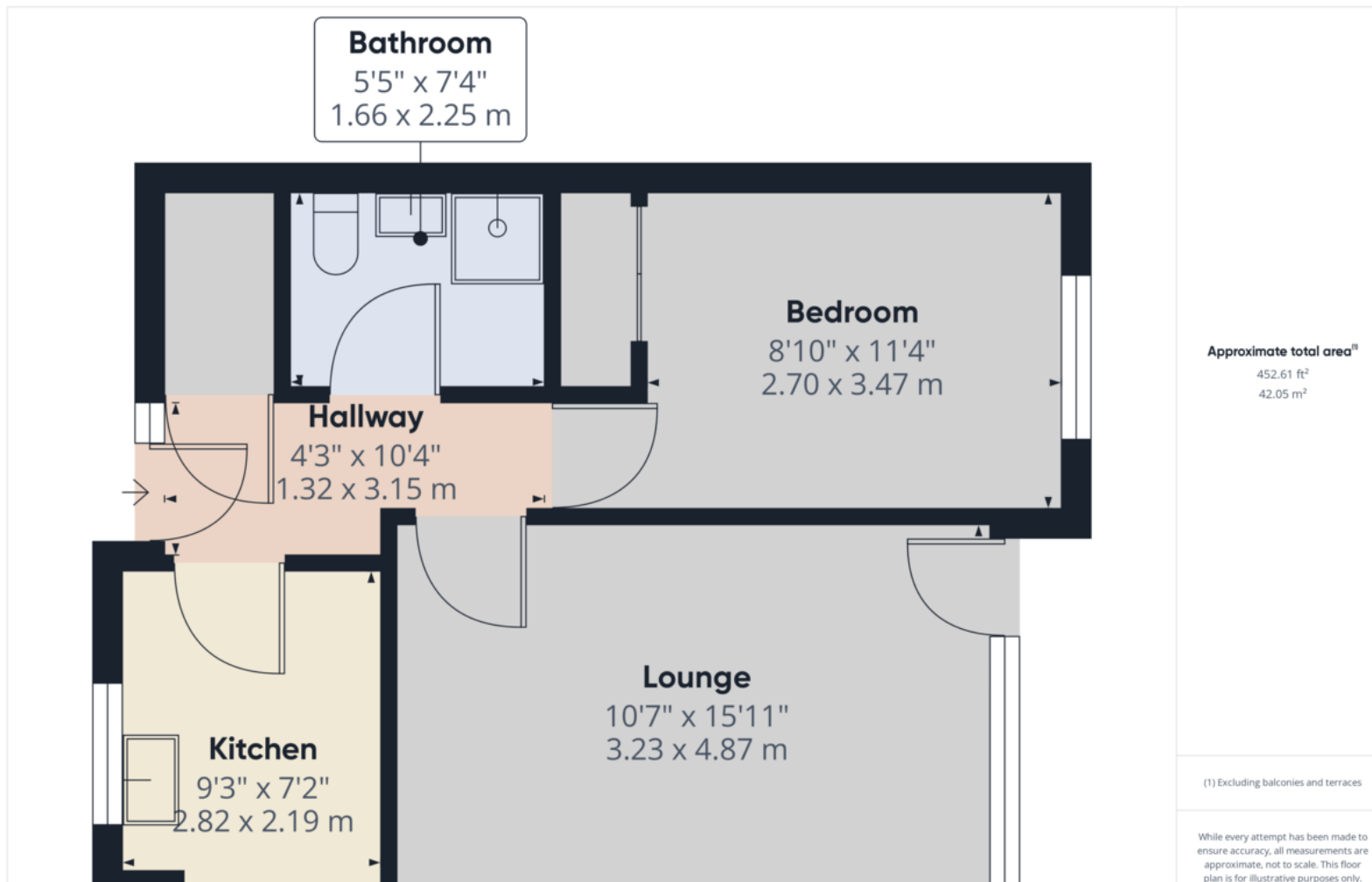
Set in a convenient location near Clifton Park, Beechwood Lodge offers practical living in a ground-floor flat, perfect for a variety of buyers. The property includes a private entrance hall with a handy storage cupboard, leading to a kitchen fitted with modern beech-effect units. A spacious lounge provides access to a balcony, offering an outdoor escape. The bedroom includes a built-in wardrobe, and the shower room is equipped with a functional three-piece suite. Outside, well-maintained communal gardens add a touch of greenery to the surroundings. The property is ideally positioned for daily needs, with nearby access to local shops and amenities. Clifton Park is within easy reach, offering open spaces for leisure activities. The location also benefits from strong transport links, with nearby bus routes providing straightforward connections to Rotherham town centre and surrounding areas. Major supermarkets such as Tesco are a short drive away making it a practical choice for various lifestyles.

SUMMARY: Conveniently **LOCATED** with great **TRANSPORT LINKS**, this flat offers **PRACTICAL LIVING**, outdoor **SPACE**, and access to **AMENITIES**.





Score	Energy rating	Current	Potential
92+	A		
81-91	B		
69-80	C		70 C
55-68	D	56 D	
39-54	E		
21-38	F		
1-20	G		



Martin & Co Rotherham

5 Worry Goose Lane • Whiston • Rotherham • S60 4AA
T: 01709 544982 • E: rotherham@martinco.com

01709 544982

<http://www.martinco.com>



Accuracy: References to the Tenure of a Property are based on information supplied by the Seller. The Agent has not had sight of the title documents. A Buyer is advised to obtain verification from their Solicitor. Items shown in photographs including but not limited to carpets, fixtures and fittings are not included unless specifically mentioned within the sales particulars. They may however be available by separate negotiation. Buyers must check the availability of any property and make an appointment to view before embarking on any journey to see a property. No person in the employment of the agent has any authority to make any representation about the property, and accordingly any information given is entirely without responsibility on the part of the agents, sellers(s) or lessors(s). Any property particulars are not an offer or contract, nor form part of one. **Sonic / Laser Tape:** Measurements taken using a sonic / laser tape measure may be subject to a small margin of error. **All Measurements:** All Measurements are Approximate. **Services Not tested:** The Agent has not tested any apparatus, equipment, fixtures and fittings or services and so cannot verify that they are in working order or fit for the purpose. A Buyer is advised to obtain verification from their Solicitor or Surveyor.