



Yarmouth Close, Toothill - SN5 8LL

West Swindon

Guide Price **£415,000**

mcfarlane
property.com

Yarmouth Close

West Swindon

4-bed detached home in West Swindon. Updated and altered to offer spacious living, private garden, and garage conversion. Master bed with en-suite, generous rear garden, car port, and parking.

- Deceptively Spacious Family Home
- FOUR BEDROOMS (Master with En-Suite)
- Altered and Improved Home
- Kitchen plus Dining Room / Family Room (Vaulted Ceiling)
- Separate Living Room
- Mature & Enclosed Rear Gardens



Yarmouth Close

West Swindon

- Deceptively Spacious Family Home
- FOUR BEDROOMS (Master with En-Suite)
- Altered and Improved Home
- Kitchen plus Dining Room / Family Room (Vaulted Ceiling)
- Separate Living Room
- Mature & Enclosed Rear Gardens

Council Tax band: E

Tenure: Freehold

EPC Energy Efficiency Rating: C

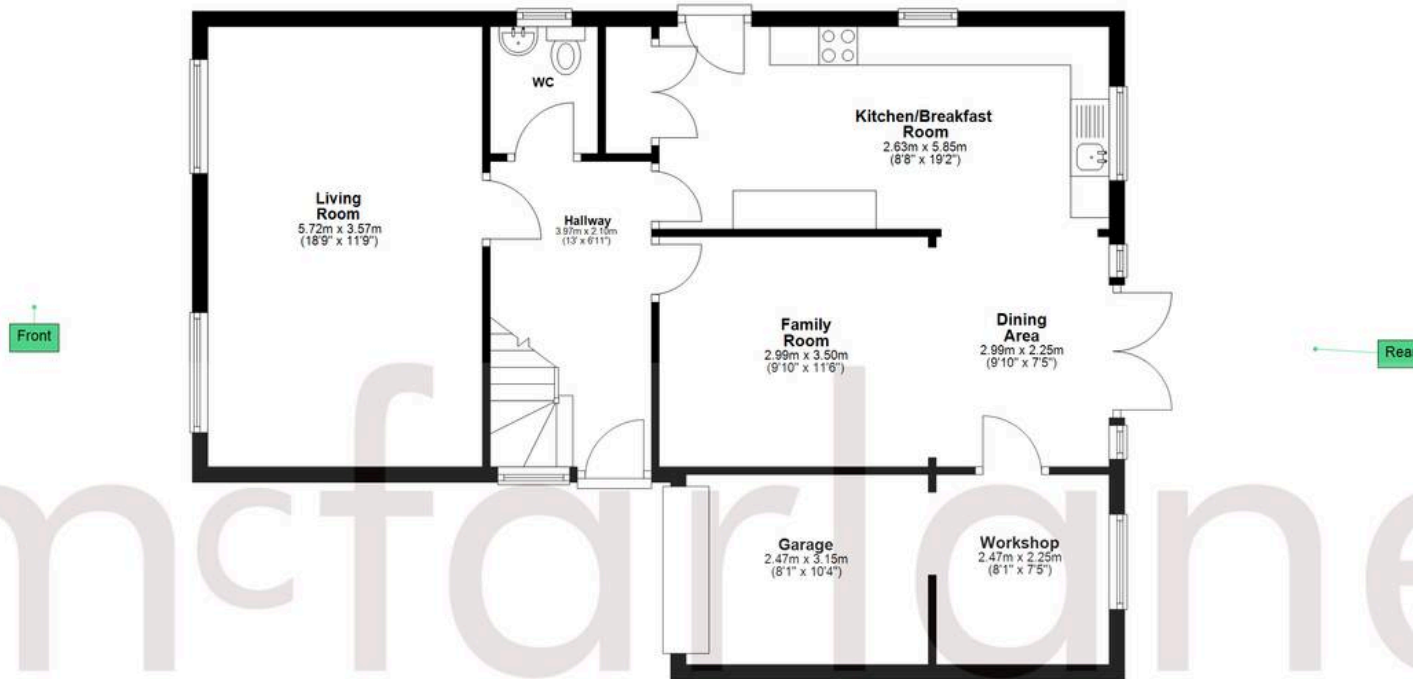
EPC Environmental Impact Rating: D



mcfarlane
property.com

Ground Floor

Approx. 81.2 sq. metres (873.5 sq. feet)



First Floor

Approx. 47.1 sq. metres (507.3 sq. feet)



Total area: approx. 128.3 sq. metres (1380.8 sq. feet)

Agents Note: Whilst every care has been taken to prepare these sales particulars, they are for guidance purposes only. All measurements are approximate and whilst every care has been taken to ensure their accuracy, they should not be relied upon and potential buyers are advised to recheck the measurements.