

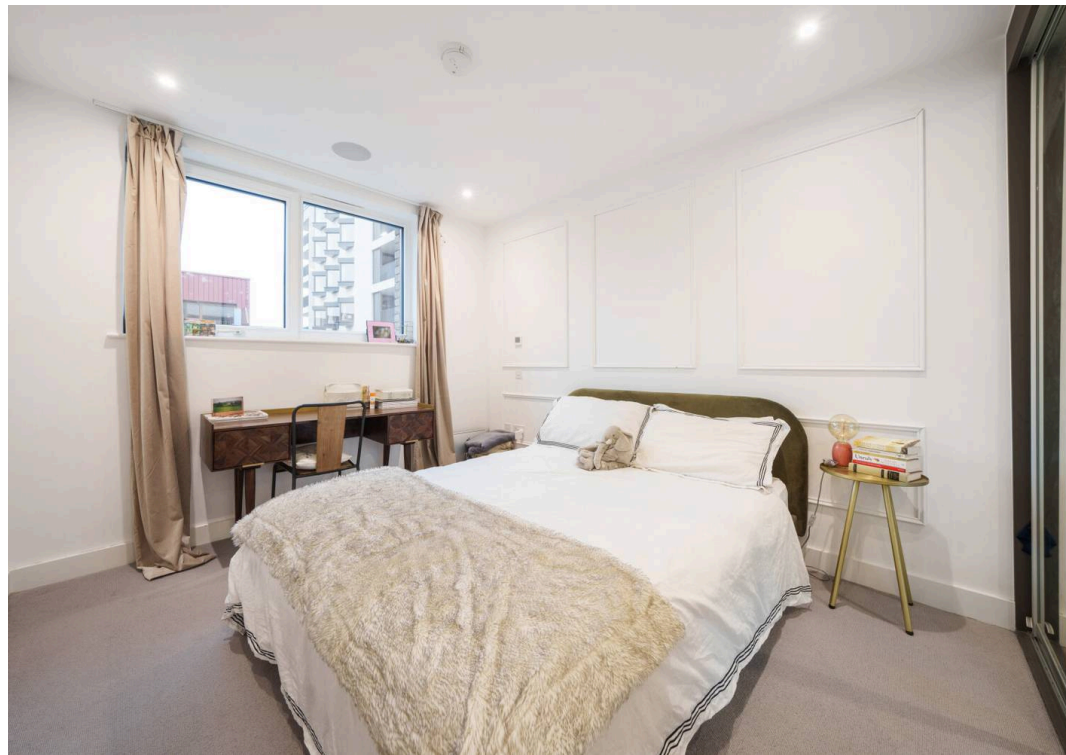


The Crosse, Crimscott St, SE1

£775,000







Flat 5, The Crosse, 36 Crimscott Street

, London

Council Tax band: E

Tenure: Leasehold

EPC Energy Efficiency Rating: B

EPC Environmental Impact Rating: A

- Within easy reach of Bermondsey Street and London Bridge station
- Gated development of 4.7 acres with excellent security (Gates closed between 10pm and 8am)
- Beautifully presented and immaculately maintained interior of almost 1,000 square feet.
- Particularly spacious living space with sizable private balcony
- Comprehensively fitted and fully equipped kitchen with Siemens appliances
- Very spacious main bedroom with its own shower room
- Second bedroom with doors to the balcony
- Under floor heating and whole house ventilation system.
- Superbly appointed en-suite Shower room and main bathroom
- Extensive communal gardens, roof terrace, onsite concierge and residents gymnasium



Crimscott Street, London, SE1

Approximate Area = 978 sq ft / 90.9 sq m

For identification only - Not to scale





Daniel Cobb

Daniel Cobb Estate Agents, 82-84 Bermondsey Street – SE1 3UD

020 7357 0026 • londonbridge@danielcobb.co.uk • www.danielcobb.co.uk/