



**Stamford Green Road, Epsom**

Guide Price **£745,000**



## Stamford Green Road

Epsom

Charming Victorian semi-detached house in sought-after Epsom Common area. 3 double bedrooms, 2 bathrooms, 2 receptions, kitchen, utility area. Secluded rear garden, driveway. Ideal for families, close to schools, town centre, station. Perfect blend of character and modern living.

Council Tax band: E

Tenure: Freehold

EPC Energy Efficiency Rating: E

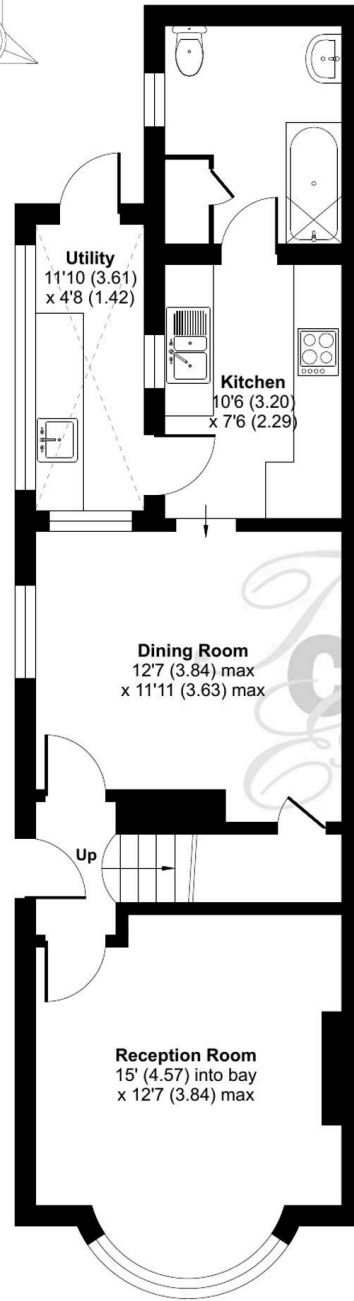
- Victorian Semi
- Popular Epsom Common Location
- Two Reception Rooms With Feature Fireplaces
- Three Double Bedrooms
- Two Bathrooms
- Secluded Rear Garden
- Exposed Original Floorboards
- Open/Unrestricted Views To The Front
- Walking Distance to Town Centre & Station
- Catchment Area of Outstanding Schools



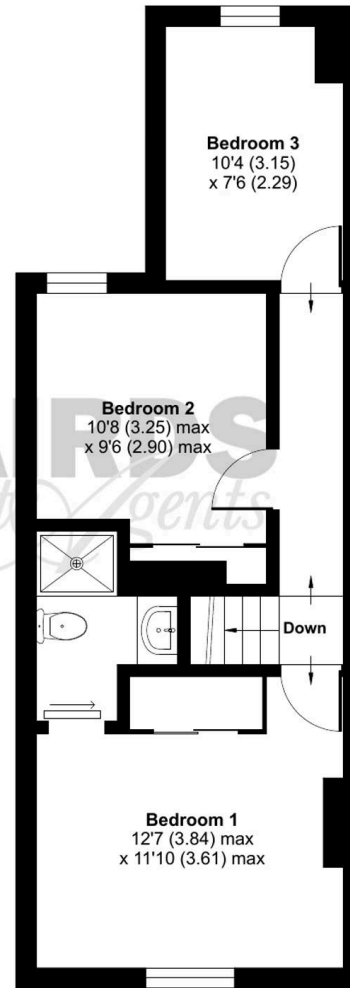
# Stamford Green Road, Epsom, KT18

Approximate Area = 1023 sq ft / 95 sq m

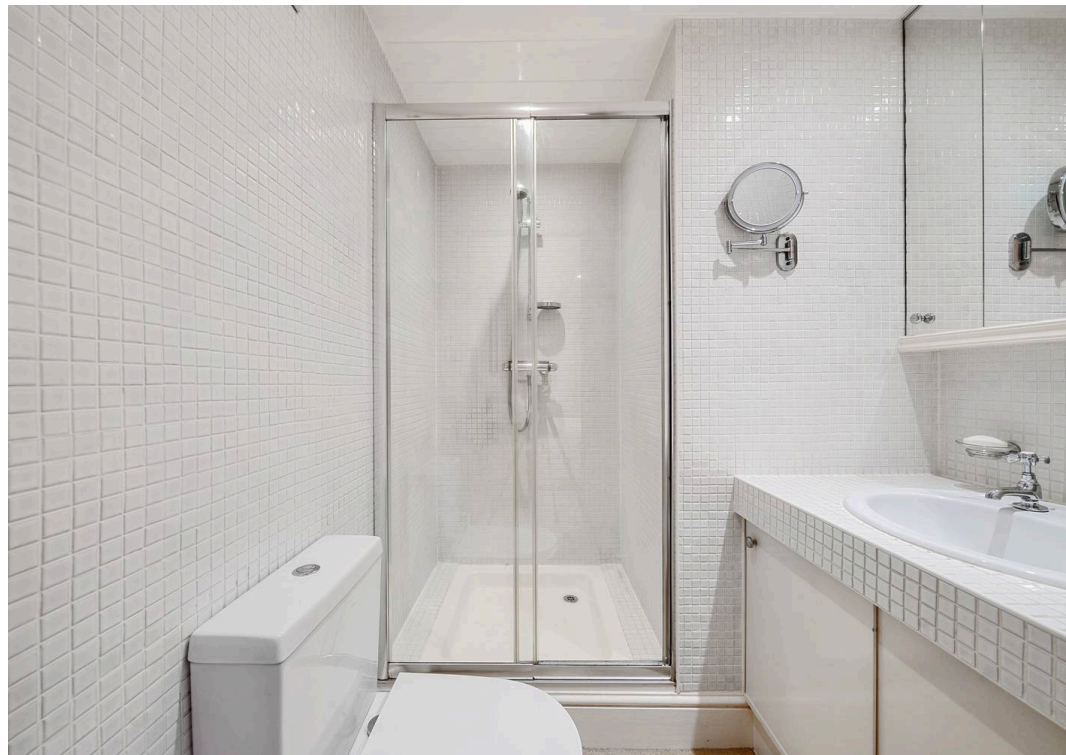
For identification only - Not to scale



**GROUND FLOOR**



**FIRST FLOOR**





## Cairds The Estate Agents

Cairds The Estate Agents, 128-130 High Street - KT19 8BT

01372 743033 • homes@cairds.co.uk • www.cairds.co.uk