



Flat 1, 50 Queen Elizabeth Drive, Swindon

Swindon

£140,000

mcfarlane  
property.com



## Flat 1

50 Queen Elizabeth Drive, Swindon

Welcome to this charming GROUND FLOOR APARTMENT, perfect for both investors and first-time buyers alike! With TWO BEDROOMS, this property offers a cosy and inviting space within a popular location. The open plan living area creates a seamless flow, ideal for relaxing evenings or entertaining guests.

Situated in a vibrant neighbourhood, you'll find yourself close to amenities and schools, making daily life a breeze. With NO ONWARD CHAIN, you can move in smoothly and start enjoying your new home right away.

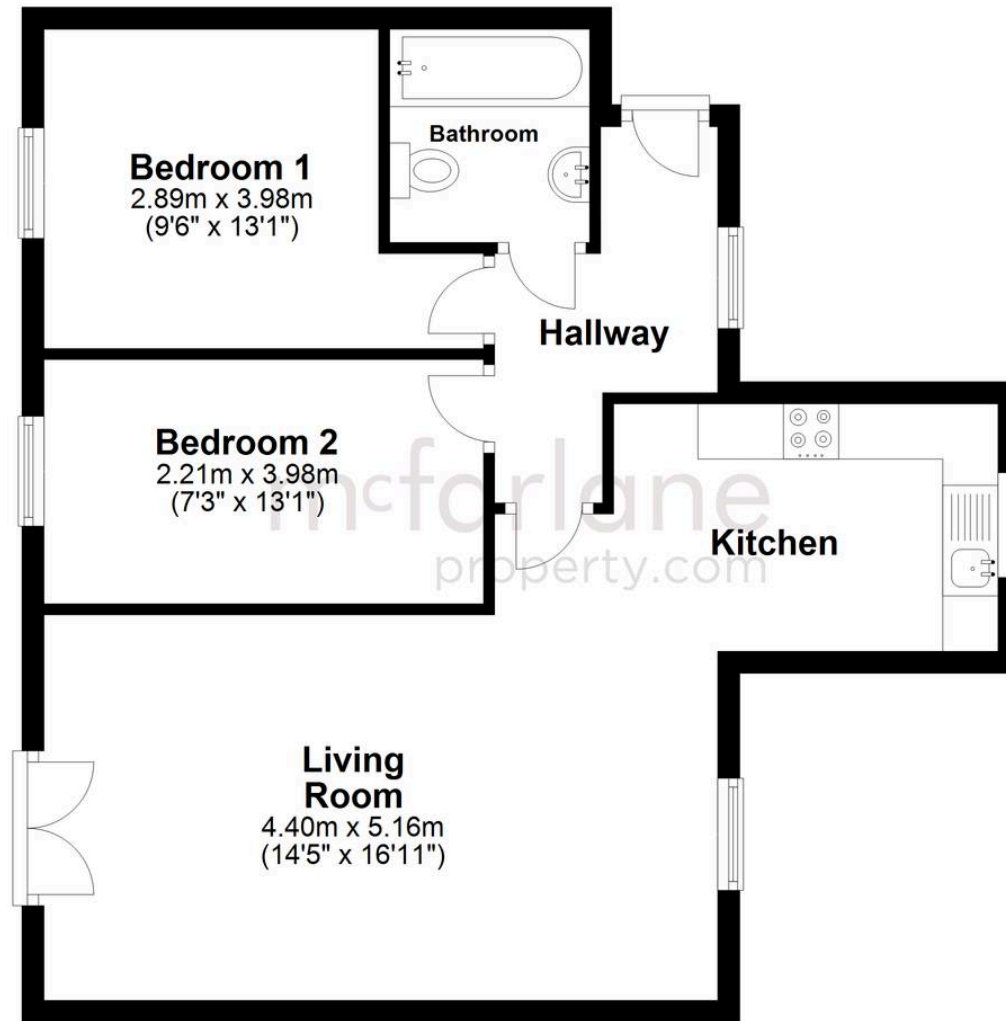
- GROUND FLOOR APARTMENT
- NO ONWARD CHAIN
- TWO BEDROOMS
- OPEN PLAN LIVING
- IDEAL INVESTMENT
- IDEAL FIRST TIME BUY
- POPULAR LOCATION
- CLOSE TO AMENITIES AND SCHOOLS





## Ground Floor

Approx. 58.3 sq. metres (627.3 sq. feet)



Total area: approx. 58.3 sq. metres (627.3 sq. feet)

## McFarlane Sales & Lettings

McFarlane Sales & Letting Ltd, 28-30 Wood Street - SN1 4AB

01793 611841 • [lettings@mcfarlaneproperty.com](mailto:lettings@mcfarlaneproperty.com) • [www.mcfarlaneproperty.com/](http://www.mcfarlaneproperty.com/)