



mcfarlano

**Buckland, Park Road**

**£455,000**

Faringdon

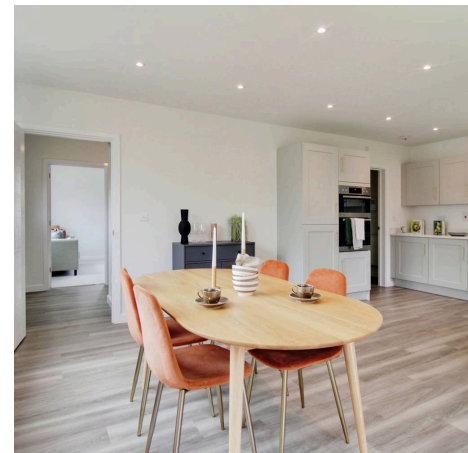


## Buckland, Park Road

### Faringdon

This IMPRESSIVE and SUBSTANTIAL 3 Bedroom Detached House is the epitome of a READY TO MOVE INTO NEW HOME. UPGRADES INCLUDED, offering a luxurious living experience from the moment you step inside. The property boasts a DETACHED structure with a MASTER SUITE featuring a DRESSING AREA and EN SUITE, providing the ultimate retreat. The EN SUITE SHOWER ROOMS in bedrooms two and three add convenience and privacy, while the FANTASTIC KITCHEN / DINING / FAMILY ROOM is perfect for entertaining or enjoying family meals. Additionally, a separate LOUNGE offers a cosy space to relax. With THREE DOUBLE BEDROOMS, a GARAGE, DRIVEWAY PARKING, and a practical UTILITY room, this home caters to all your needs in style.

- SAVE THOUSANDS ON STAMP DUTY BEFORE THE CHANGES ON 31ST MARCH
- READY TO MOVE INTO NEW HOME
- UPGRADES AND FLOORING INCLUDED!!
- DETACHED
- MASTER SUITE WITH DRESSING AREA AND EN SUITE
- EN SUITE SHOWER ROOMS TO BEDROOMS TWO AND THREE
- FANTASTIC KITCHEN / DINING / FAMILY ROOM
- SEPARATE LOUNGE
- GARAGE AND DRIVEWAY PARKING
- UTILITY



**Entrance Hall**

**Lounge**

20' 3" x 12' 6" (6.18m x 3.80m)

**Kitchen / Dining / Family**

20' 3" x 15' 7" (6.18m x 4.75m)

**Utility**

5' 7" x 7' 2" (1.70m x 2.18m)

**WC**

**Landing**

**Bedroom 1**

12' 0" x 10' 10" (3.65m x 3.31m)

**Dressing Area**

**En-suite**

**Bedroom 2**

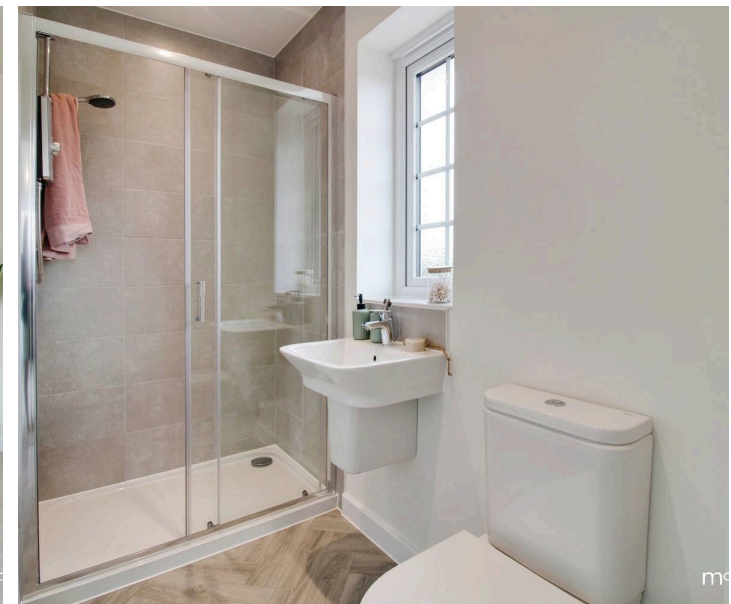
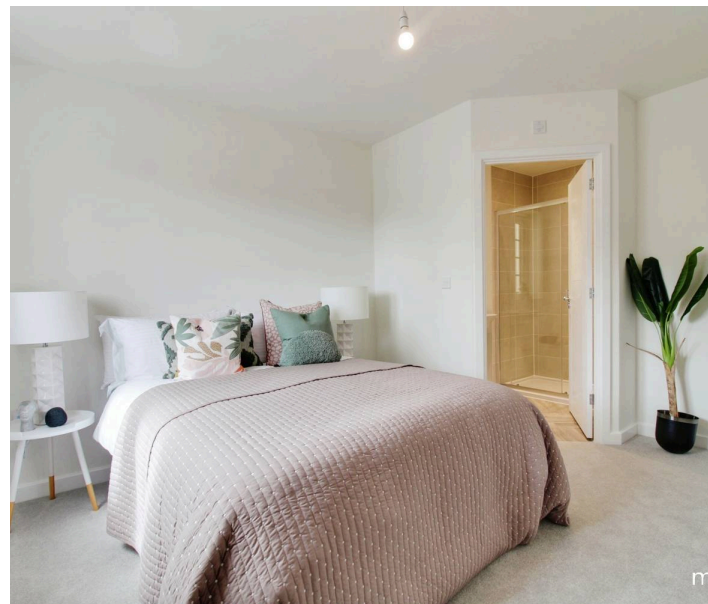
11' 2" x 12' 9" (3.41m x 3.88m)

**En-suite**

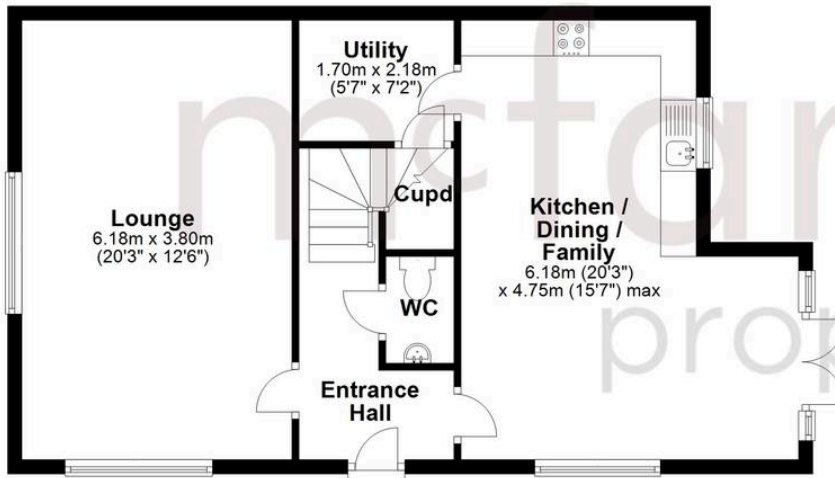
**Bedroom 3**

8' 10" x 11' 4" (2.68m x 3.46m)

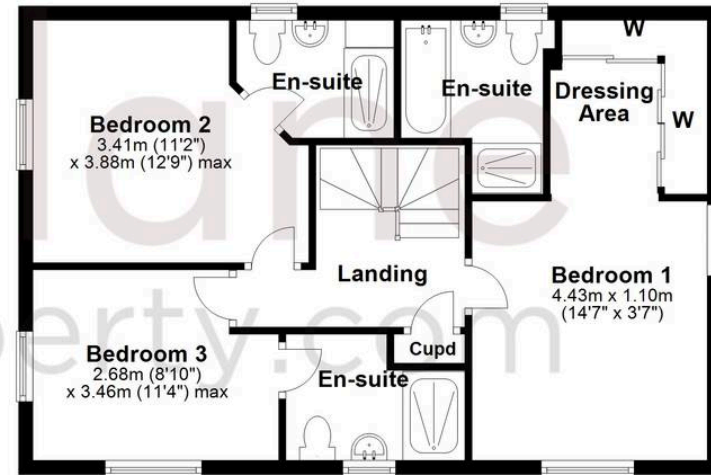
**En-suite**



**Ground Floor**



**First Floor**



# McFarlane Sales & Lettings

McFarlane Sales & Letting, 106 High Street - SN8 1LT

01672 514380 • [marlborough@mcfarlaneproperty.com](mailto:marlborough@mcfarlaneproperty.com) • [www.mcfarlaneproperty.com/](http://www.mcfarlaneproperty.com/)