



**Harwood, Park Road**

Faringdon

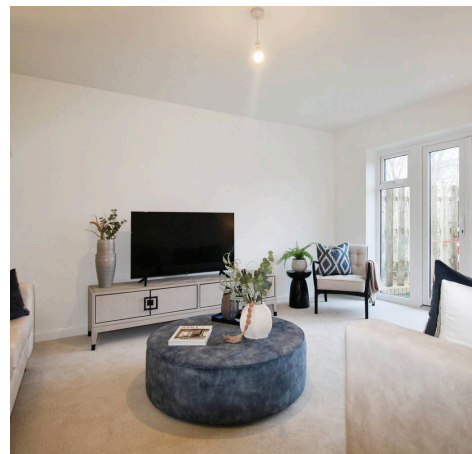
**£490,000**

# Harwood, Park Road

## Faringdon

Introducing this EXCEPTIONAL 4 Bedroom DETACHED House that stands as a testament to fine living. This NEW HOME comes with UPGRADES INCLUDED! Boasting a design that marries style with functionality, this property offers the epitome of modern living. Complete with a DETACHED garage and driveway parking, this home welcomes you into a spacious haven featuring a KITCHEN / DINING / FAMILY ROOM perfect for entertaining, a convenient utility area and WC, a luxurious MASTER EN-SUITE, a family bathroom, and not one, but FOUR DOUBLE BEDROOMS - ensuring ample space for the entire family. Furthermore, envision the possibilities with a separate LOUNGE for relaxation and a study for productivity. This property is the perfect blend of comfort and style, waiting to be called your dream home. Whether hosting summer barbeques or enjoying a morning coffee in the fresh air, the garden offers a private escape from the bustle of every-day life.

- NEW HOME
- UPGRADES INCLUDED !
- DETACHED
- GARAGE AND DRIVEWAY PARKING
- KITCHEN / DINING / FAMILY ROOM
- UTILITY AREA AND WC
- MASTER EN-SUITE AND FAMILY BATHROOM
- SEPARATE LOUNGE AND STUDY



## Entrance Hall

## Lounge

15' 9" x 11' 9" (4.79m x 3.59m)

## Kitchen / Dining / Family

26' 5" x 14' 0" (8.05m x 4.26m)

## Study

7' 4" x 10' 4" (2.23m x 3.16m)

## Utility

## WC

## Landing

## Bedroom 1

9' 11" x 12' 3" (3.01m x 3.73m)

## En-suite

## Bedroom 2

12' 0" x 11' 8" (3.66m x 3.55m)

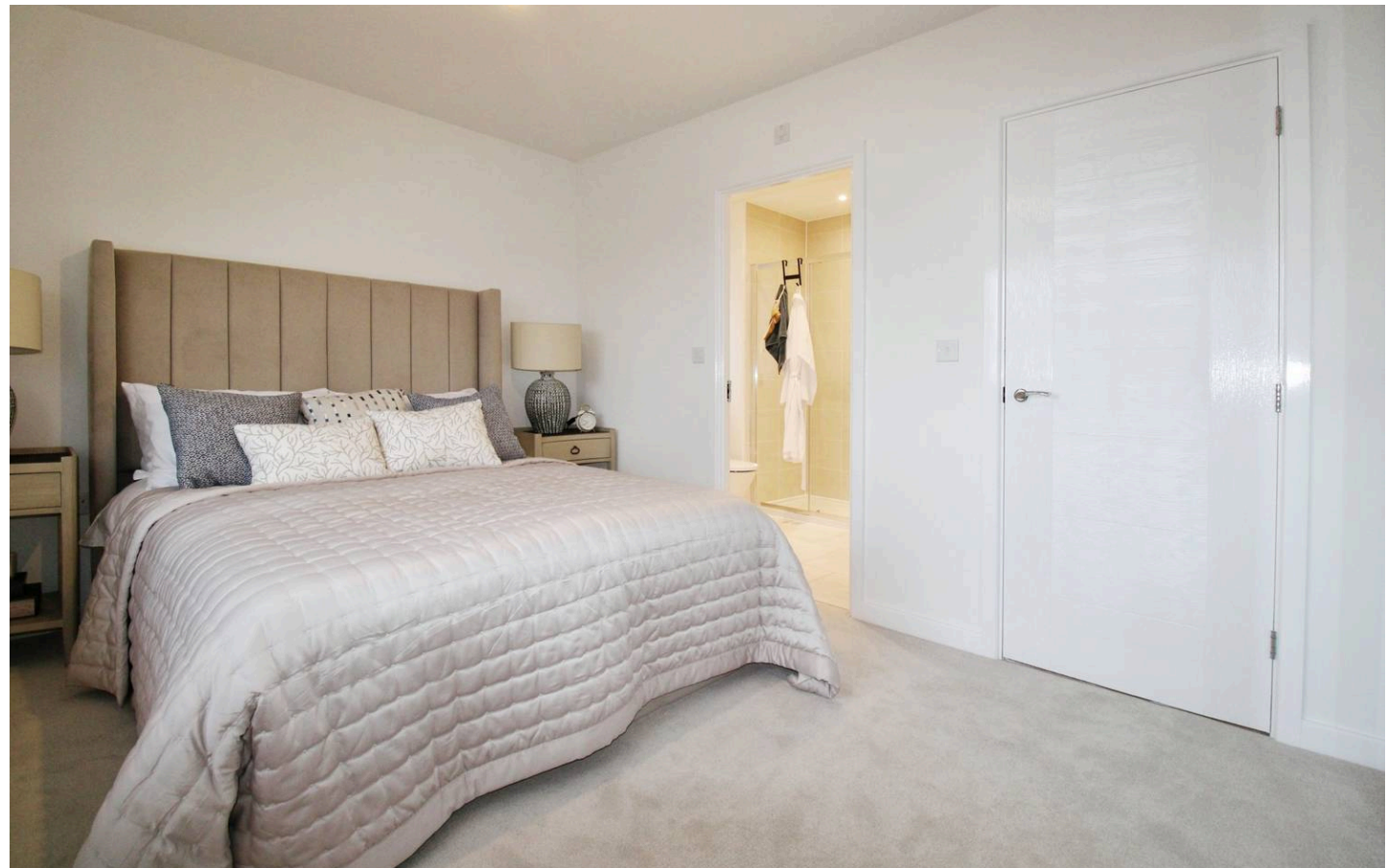
## Bedroom 3

9' 7" x 13' 11" (2.93m x 4.24m)

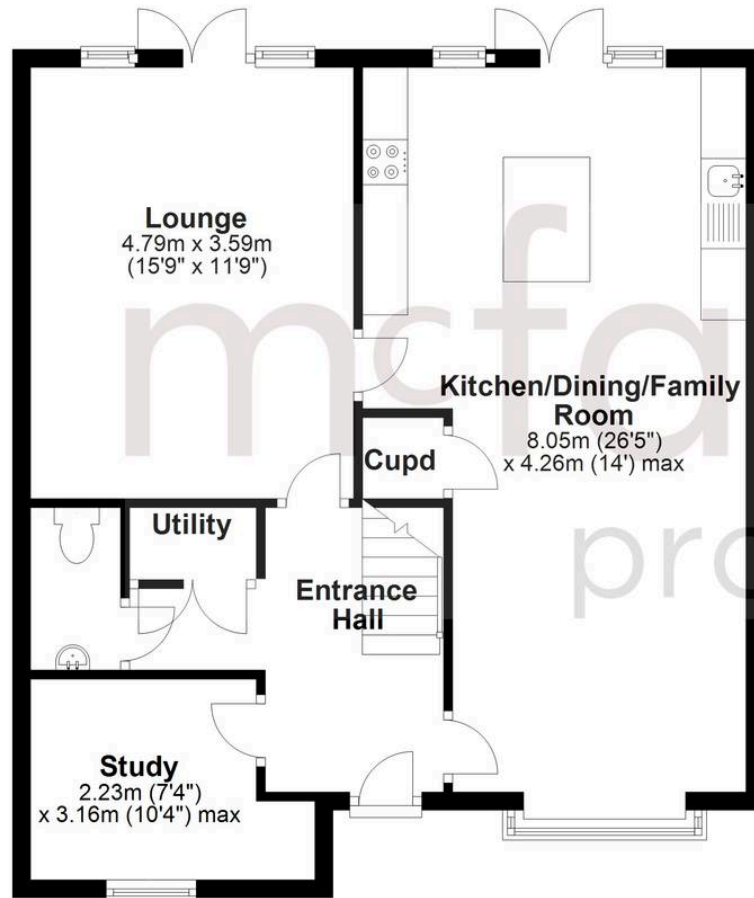
## Bedroom 4

7' 6" x 12' 1" (2.28m x 3.69m)

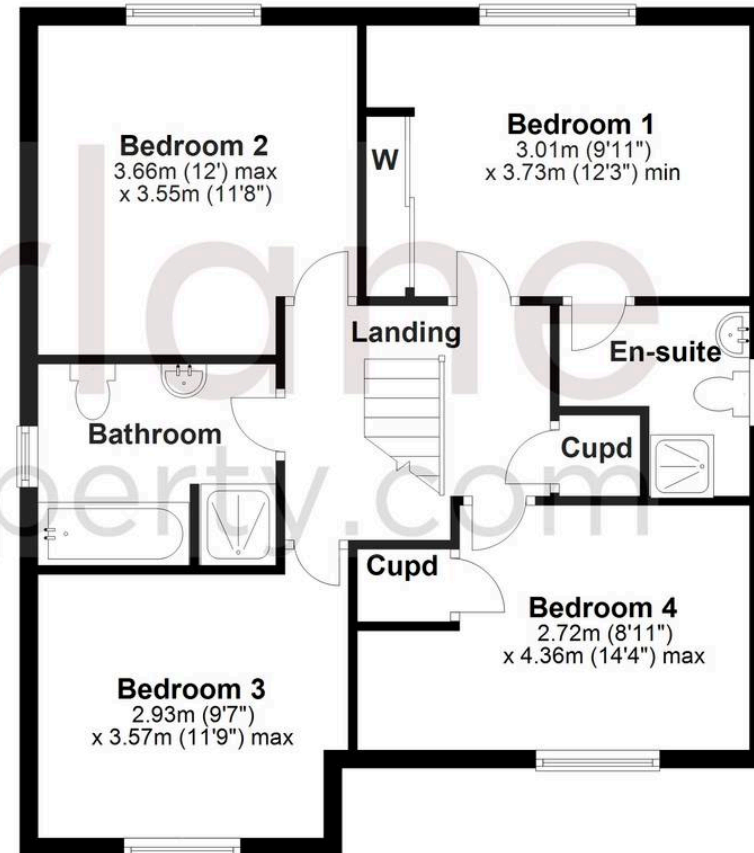
## Bathroom



## Ground Floor



## First Floor



## McFarlane Sales & Lettings

McFarlane Sales & Letting, 106 High Street - SN8 1LT

01672 514380 • marlborough@mcfarlaneproperty.com • www.mcfarlaneproperty.com/