

Apartment for sale

Holliday Wharf
Waterfront Walk,
Birmingham B1 1TX





Sunset view of brick buildings alongside a water channel in the central Birmingham, England

Discover Canal-Side Living in the Heart of Birmingham

Welcome to this beautifully presented first-floor apartment, located within the exclusive gated community of Holliday Wharf on Waterfront Walk. Nestled in a dynamic and rapidly evolving area, this property places you at the heart of Birmingham's vibrant city life. Surrounded by a surge of trendy new bars, restaurants, and modern developments, the location offers a perfect blend of urban energy and serene canal-side charm.



A Warm Welcome

The development is accessed via secure entry gates, with the added convenience of an intercom system and allocated, off-street covered parking. Whether you arrive by car or on foot, the approach to the property reflects both safety and exclusivity.

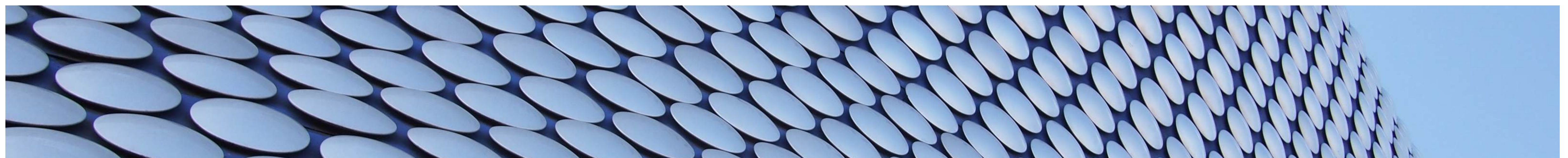
Stylish and Spacious Living

This light-filled apartment boasts a south-east-facing sitting room with a spacious open-plan layout. The modern, fully fitted kitchen seamlessly integrates into the living space, creating an inviting atmosphere for relaxing or entertaining. A large window and French doors with a Juliet balcony frame picturesque views of the Worcester & Birmingham Canal and the iconic "Love Lock" Bridge, offering a tranquil retreat from the bustle of city life.



The generously proportioned master bedroom includes built-in wardrobes for ample storage, while an additional hallway cupboard ensures a clutter-free living space. A sleek and contemporary shower room, conveniently located next to the master bedroom, completes this well-designed home.

Whether you're seeking a chic city-centre residence or a lucrative investment opportunity, this apartment at Holliday Wharf is an exceptional find. Don't miss your chance to experience the best of Birmingham living—schedule your viewing today!





Generic images of central Birmingham with the city centre, The Cube behind brick buildings alongside the water channel and canal barges.

City Living
Waterfront
Tranquility
Canal Views
Secure Parking
Central location
Gated Development









11

apartments 1 to 6

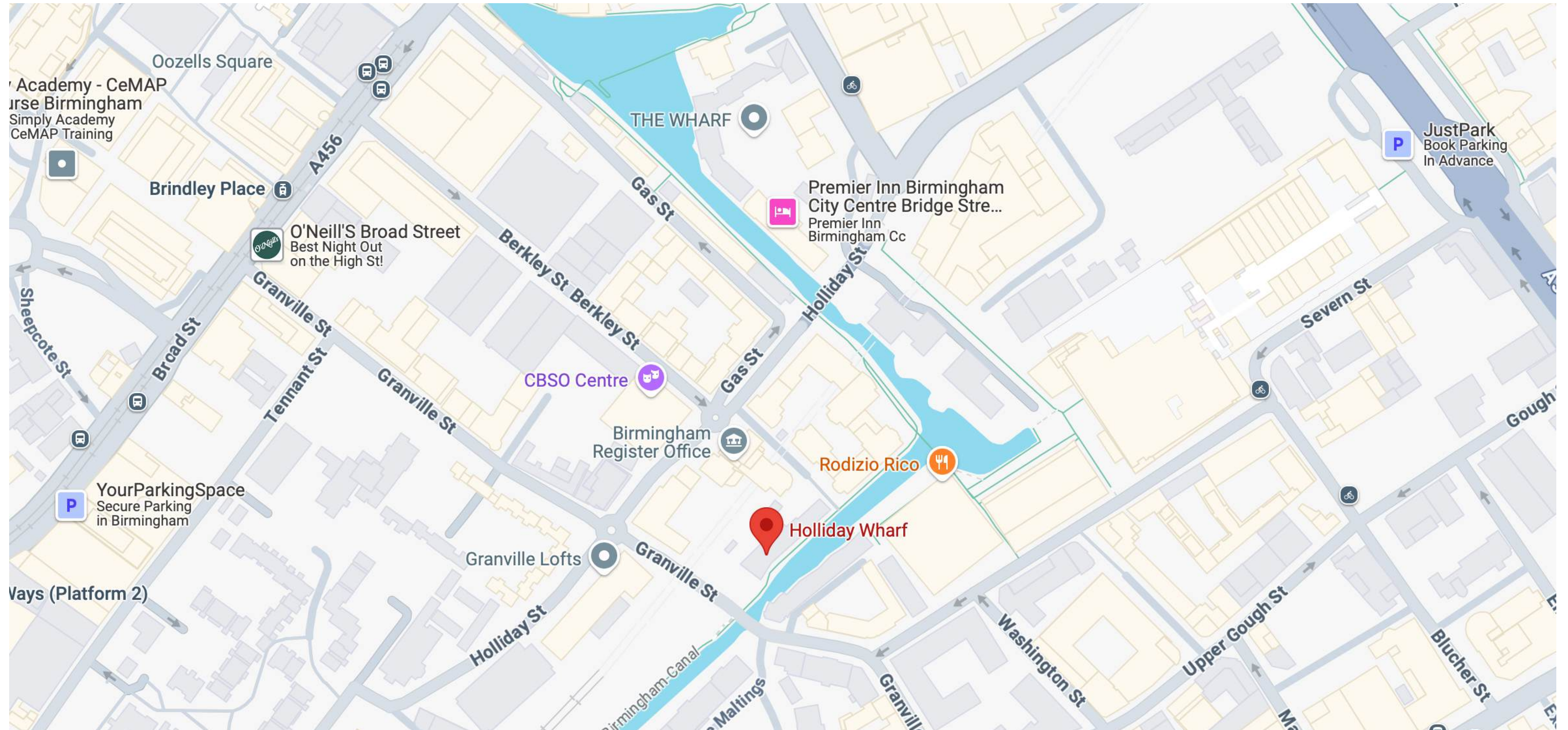




Example of off-street parking at the scheme







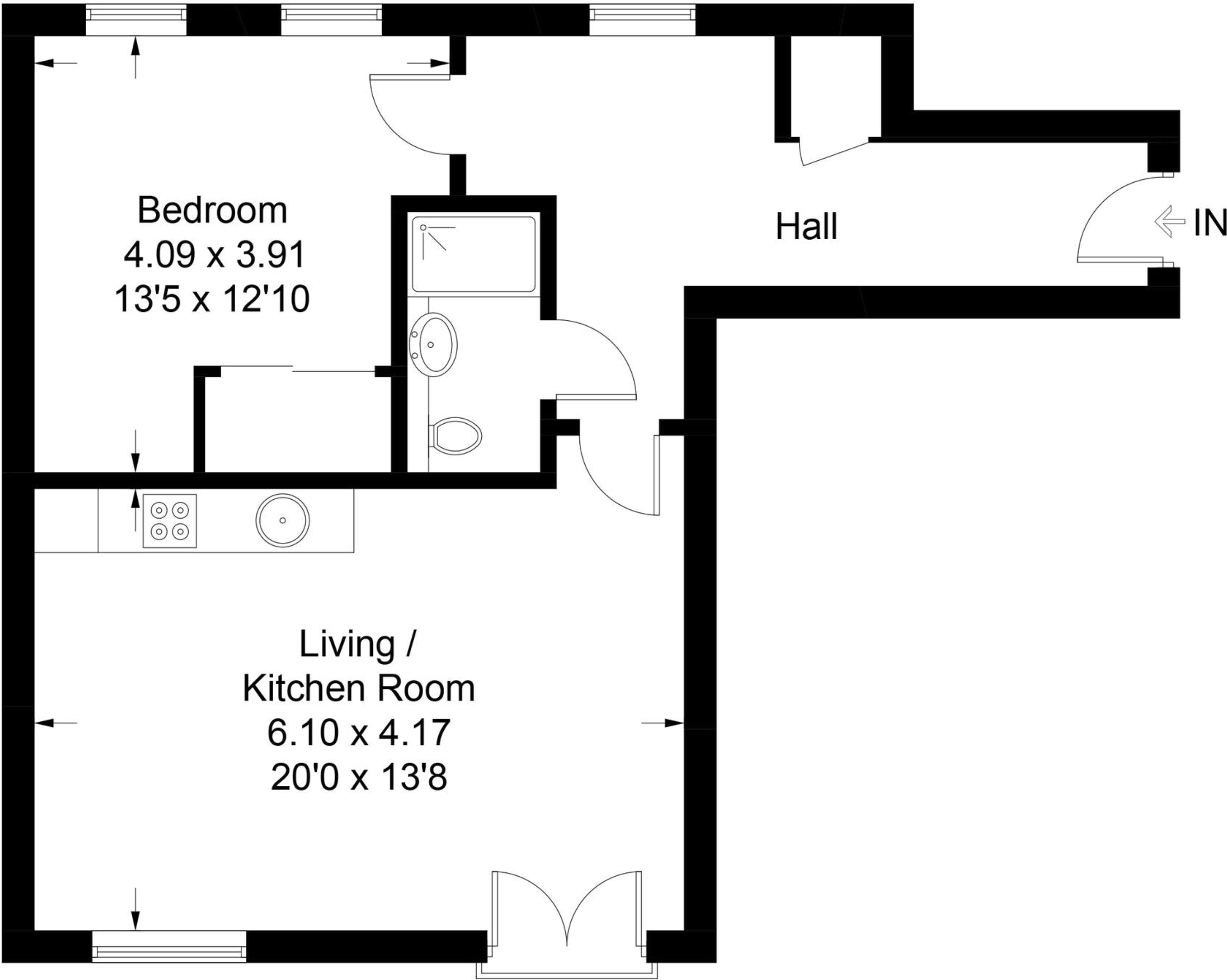
Prime Location

Positioned at the centre of Birmingham's canal network, this apartment offers unrivalled access to the city's most sought-after destinations. The nearby Mailbox and Cube developments provide an array of high-end shops, exceptional dining options, and stylish bars. The canals connect you to the south of the city, including Birmingham University, as well as Brindley Place and the historic Jewellery Quarter to the north.

Transportation is effortless, with Birmingham New Street Station just a short distance away, and easy access to the city's ring road and the M6 motorway for convenient travel further afield.

Apartment 3, Holliday Wharf, Birmingham

Approximate Gross Internal Area = 59.3 sq m / 638 sq ft



First Floor

Illustration for identification purposes only, measurements are approximate, not to scale. Fourlabs.co © (ID1155616)

Important Notice

Before printing, think about your environment.

Important notice: Juszt Capital LTD, its trading partners, their clients and any joint agents give notice that:

1: They are not authorised to make or give any representations or warranties in relation to the property either here or elsewhere, either on their own behalf or on behalf of their client or otherwise. They assume no responsibility for any statement that may be made in these particulars. These particulars do not form part of any offer or contract and must not be relied upon as statements or representations of fact.

2: Any areas, measurements or distances are approximate. The text, photographs and plans are for guidance only and are not necessarily comprehensive. It should not be assumed that the property has all necessary planning, building regulation or other consents and Juszt Capital or Redwald Estates have not tested any services, equipment or facilities. Purchasers must satisfy themselves by inspection or via third party professionals. 350602

3. Any advice contained in this presentation, or in previous correspondence, is informal and given purely as guidance unless otherwise explicitly stated. Our views on price are not intended as a formal valuation and should not be relied upon as such. They are given in the course of our estate agency role. Furthermore, any advice attached is not a formal ("Red Book") valuation, and neither Juszt Capital, nor the author can accept any responsibility to any third party who may seek to rely upon it, as a whole or any part as such. If formal advice is required this will be explicitly stated along with our understanding of limitations and purpose.

4. No liability is given to any third party and the figures suggested are in accordance with Professional Standards PS1 and PS2 of the RICS Valuation – Global Standards 2017 incorporating the IVSC International Valuation Standards issued June 2017 and effective from 1 July 2017.

5. If this brochure / report is accompanied via electronic format, and whilst all efforts are made to safeguard emails, Juszt Capital, its clients, or its partners cannot guarantee that attachments are virus free or compatible with your systems and does not accept liability in respect of viruses or computer problems experienced.

For a viewing contact Richard:

T: +44 (0) 203 488 8952

M: +44 (0) 7582 482 662

richard@jusstcapital.com

Tenure: Leasehold:

Lease Length: 150 years from 25 March 2005

Council Tax: Band C (Approx. £1,852.23 p.a.)

Ground Rent: TBC

Service charge: TBC

Services: Mains services

Fixtures And Fittings: TBC

Viewings: By Appointment.

Guide Price: £235,000

Score	Energy rating	Current	Potential
92+	A		
81-91	B		
69-80	C	71 C	80 C
55-68	D		
39-54	E		
21-38	F		
1-20	G		



Juszt Capital is a Limited liability company.

Head office: 45 Beech Street, Barbican, London EC2R 8AD. Registered Office: 9 Byford Court, Crockatt Road, Hadleigh, Suffolk IP7 6RD in England and Wales no.07689769

© 2025 copyright Juszt Capital LTD. All right reserved



Before printing, think about your environment.

JUSZT
CAPITAL
property brokers and luxury asset investment
forward thinking in a moving market

Head Office: 45 Beech Street, Barbican, City of London EC2R 8AD T: +44 (0) 203 488 8852 contactus@jusztcapital.com www.jusztcapital.com





Water is life's matter and matrix, mother and medium. There is no life without water." - Albert Szent-Gyorgyi