



**Wotton, Clements Way**

Shrivenham

**£430,000**

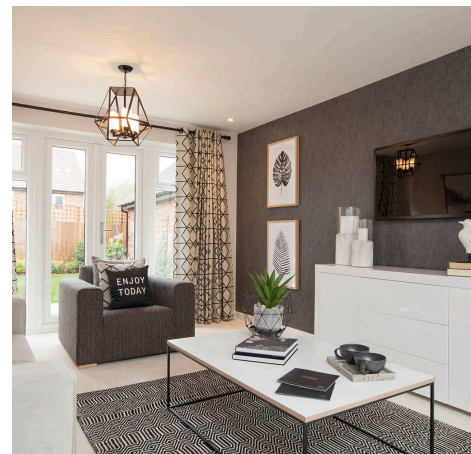
## Wotton, Clements Way

### Shrivenham

Welcome to this stunning NEW BUILD DETACHED HOUSE, boasting a total of FOUR BEDROOMS, including a MASTER BEDROOM with an en-suite, a spacious FAMILY BATHROOM & WC, providing comfort and convenience for modern living. The property features a LARGE OPEN PLAN KITCHEN / DINING ROOM, perfect for entertaining guests, a separate UTILITY ROOM, and a generously sized RECEPTION ROOM for relaxation and leisure. With ample parking space available, this executive home offers both style and practicality, making it ideal for families looking for luxury living.

The property also comes with private parking, ensuring convenience and security for residents. Don't miss the opportunity to own this impressive and substantial home, offering a blend of contemporary design and comfort in a desirable location.

- NEW BUILD HOME
- DETACHED
- LARGE OPEN PLAN KITCHEN / DINING ROOM
- LARGE RECEPTION ROOM
- UTILITY ROOM
- FOUR BEDROOMS
- MASTER BEDROOM EN-SUITE
- FAMILY BATHROOM & WC
- PARKING



## Entrance Hall

## Lounge

11' 5" x 20' 3" (3.47m x 6.18m)

## Family / Kitchen / Dining

10' 8" x 20' 3" (3.25m x 6.18m)

## Utility

7' 2" x 5' 3" (2.18m x 1.60m)

## WC

## Landing

## Bedroom 1

11' 8" x 9' 3" (3.55m x 2.82m)

## En-suite

## Bedroom 2

10' 10" x 10' 10" (3.29m x 3.31m)

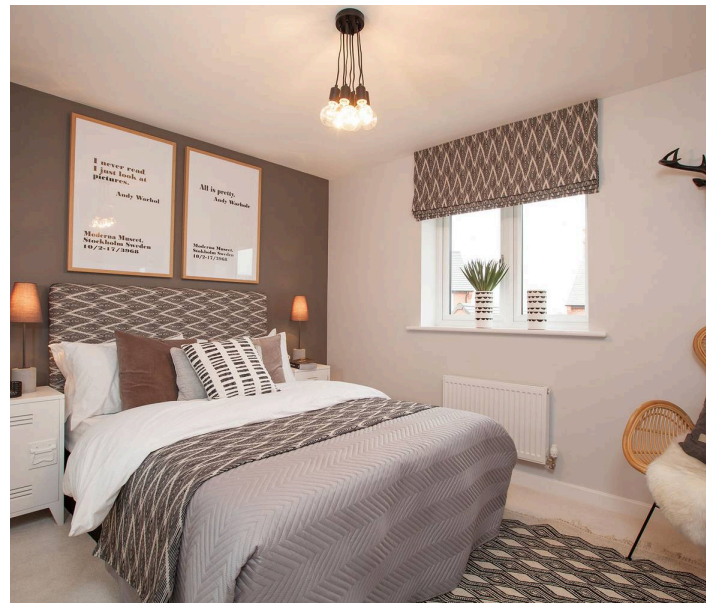
## Bedroom 3

11' 1" x 8' 8" (3.38m x 2.63m)

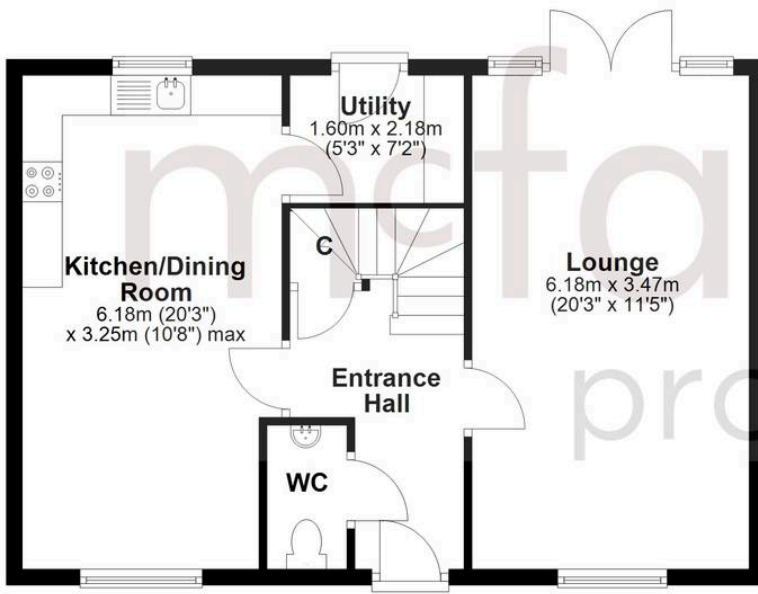
## Bedroom 4

8' 5" x 9' 2" (2.57m x 2.79m)

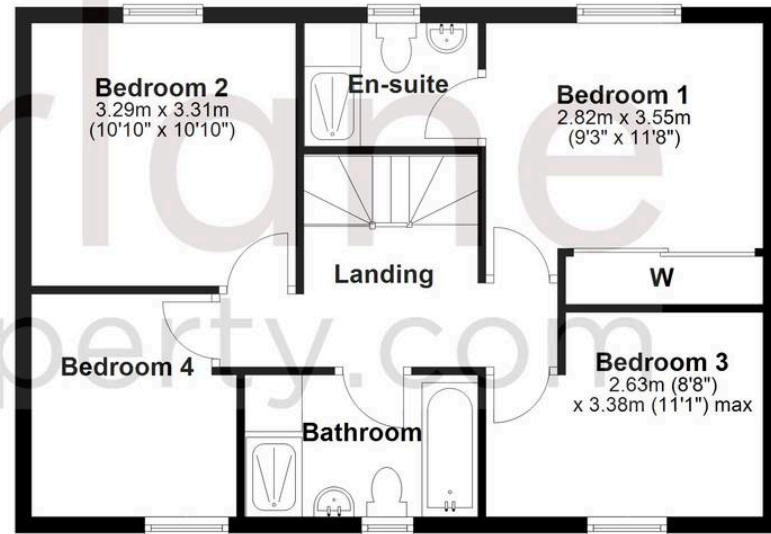
## Bathroom



### Ground Floor



### First Floor



## McFarlane Sales & Lettings

Cricklade Sales, 36 High Street, Cricklade - SN6 6AY

01793 751044 • [cricklade@mcfarlaneproperty.com](mailto:cricklade@mcfarlaneproperty.com) • [www.mcfarlaneproperty.com/](http://www.mcfarlaneproperty.com/)