



## The Gill

Property Type



**Cottage Flat**

Bedrooms



**2**

Bathrooms



**1**

Size



**702 sqft**

The Gill is a two bedroom main door cottage flat, entered either at ground floor level or via its own contemporary steel stair on the first floor. The entrance features a convenient vestibule; the ideal place to house your dirty boots, jackets, and umbrellas.

The hallway has plenty of storage with two cupboards and leads to two double bedrooms with the option of additional wardrobe in Bedroom 2.

There is also a family contemporary style bathroom complete with shower over the bath in white porcelain sanitary ware and chrome fittings. Giving you the option of a long relaxing soak to unwind after a busy day or a quick shower.

Finally, the open-plan kitchen / living room benefits from attractive French windows which allow light to flood into the space.

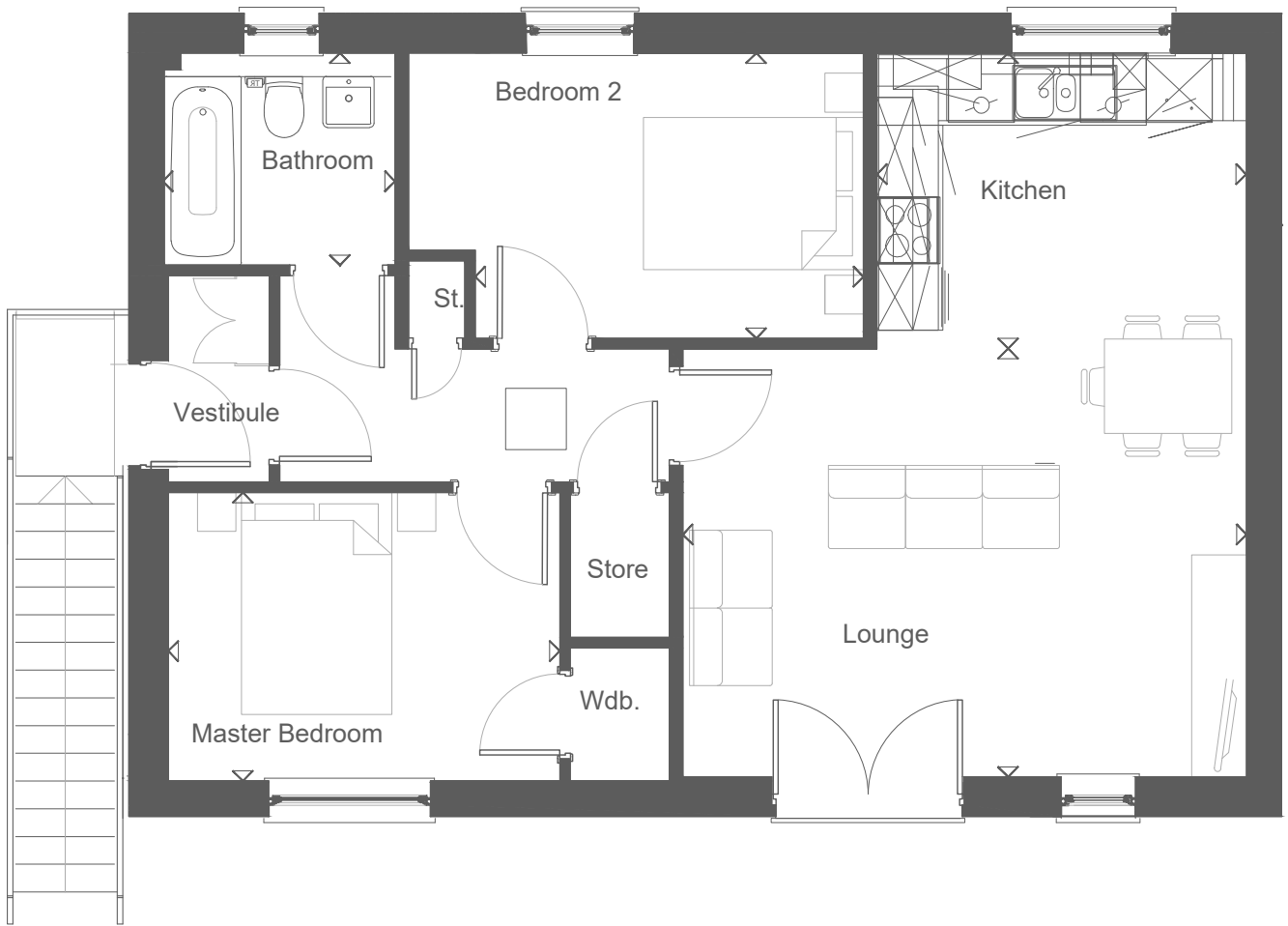
Contact



[www.whiteburn.co.uk/viewforth](http://www.whiteburn.co.uk/viewforth)

Tel : 01592 382300

Email : [sales@whiteburn.co.uk](mailto:sales@whiteburn.co.uk)



## The Gill Upper floor flat shown

Property Type



**Cottage Flat**

Bedrooms



Bathrooms



Size



**702 sqft**

### Floor Plan

	Length mm	Width mm	Length	Width
Master bedroom	3562	2600	11'8"	8'6"
Bedroom 2	3544	2572	11'8"	8'5"
Lounge	5129	3857	16'10"	12'8"
Kitchen	2667	3362	8'9"	11'0"
Bathroom	1912	2100	6'3"	6'11"