



**TO LET**



**£2,900.00 Per Calendar Month**

### **3 Bedroom Semi-Detached Guildersfield Road, Streatham, London, SW16**

#### **Crown Real Estate Presents:**

This newly refurbished 3-bedroom Semi-Detached House, spread across two floors, combines modern style with practical living. The spacious reception and dining areas are filled with natural light, providing a welcoming space for both relaxation and entertaining.

The large private garden is perfect for outdoor enjoyment. The sleek, modern kitchen is fully equipped with high-quality appliances, ideal for cooking and hosting.

Upstairs, you'll find three generously sized double bedrooms, each offering plenty of space for storage and personalization.

The contemporary bathroom features stylish fixtures for a serene, relaxing experience.

The contemporary bathroom features stylish fixtures, including a modern bathtub and shower combination, providing a serene space for relaxation and convenience.

Located near Streatham Common, this home offers easy access to shops, restaurants, and cafes on Streatham High Road, as well as large green spaces nearby. Available for long-term let, this property offers an excellent opportunity to live in a highly desirable area.

**Newly Refurbished**

**AVAILABLE NOW!**

- **3 Bedrooms**
- **2 Living Rooms**
- **Modern Kitchen**
- **Modern Bathroom**
- **Double Glazed Windows**
- **Newly Refurbished**
- **Private Garden**
- **Gas Central Heating**
- **Close to Local Amenities**

**Croydon Branch: Crown Lets 4u Ltd, 292 London Road, Croydon, Surrey, CR0 2TG**  
**Tel: 020 8684 6677      Email: [info@crownlets4u.co.uk](mailto:info@crownlets4u.co.uk)      Web: [www.crownlets4u.co.uk](http://www.crownlets4u.co.uk)**

**Streatham Branch: Crown Lets 4u Ltd, 145 Streatham High Road, London, SW16 6EG**  
**Tel: 020 8764 1111      Email: [info@crownrealestateld.com](mailto:info@crownrealestateld.com)      Web: [www.crownlets4u.co.uk](http://www.crownlets4u.co.uk)**

Company Registration No. 9488977



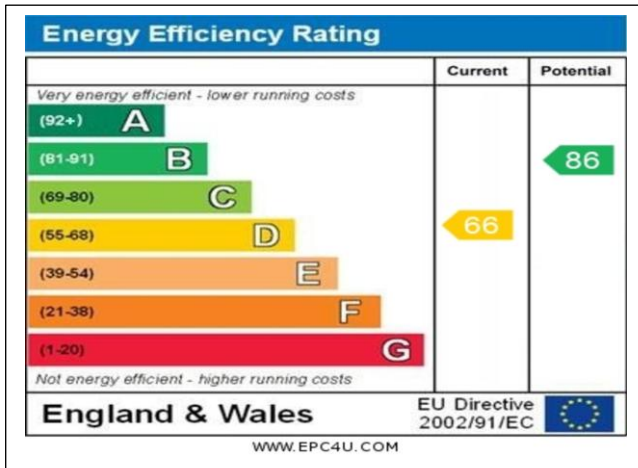
**Croydon Branch: Crown Lets 4u Ltd, 292 London Road, Croydon, Surrey, CR0 2TG**  
**Tel: 020 8684 6677      Email: [info@crowns4u.co.uk](mailto:info@crowns4u.co.uk)      Web: [www.crowns4u.co.uk](http://www.crowns4u.co.uk)**

**Streatham Branch: Crown Lets 4u Ltd, 145 Streatham High Road, London, SW16 6EG**  
**Tel: 020 8764 1111      Email: [info@crowns4u.co.uk](mailto:info@crowns4u.co.uk)      Web: [www.crowns4u.co.uk](http://www.crowns4u.co.uk)**

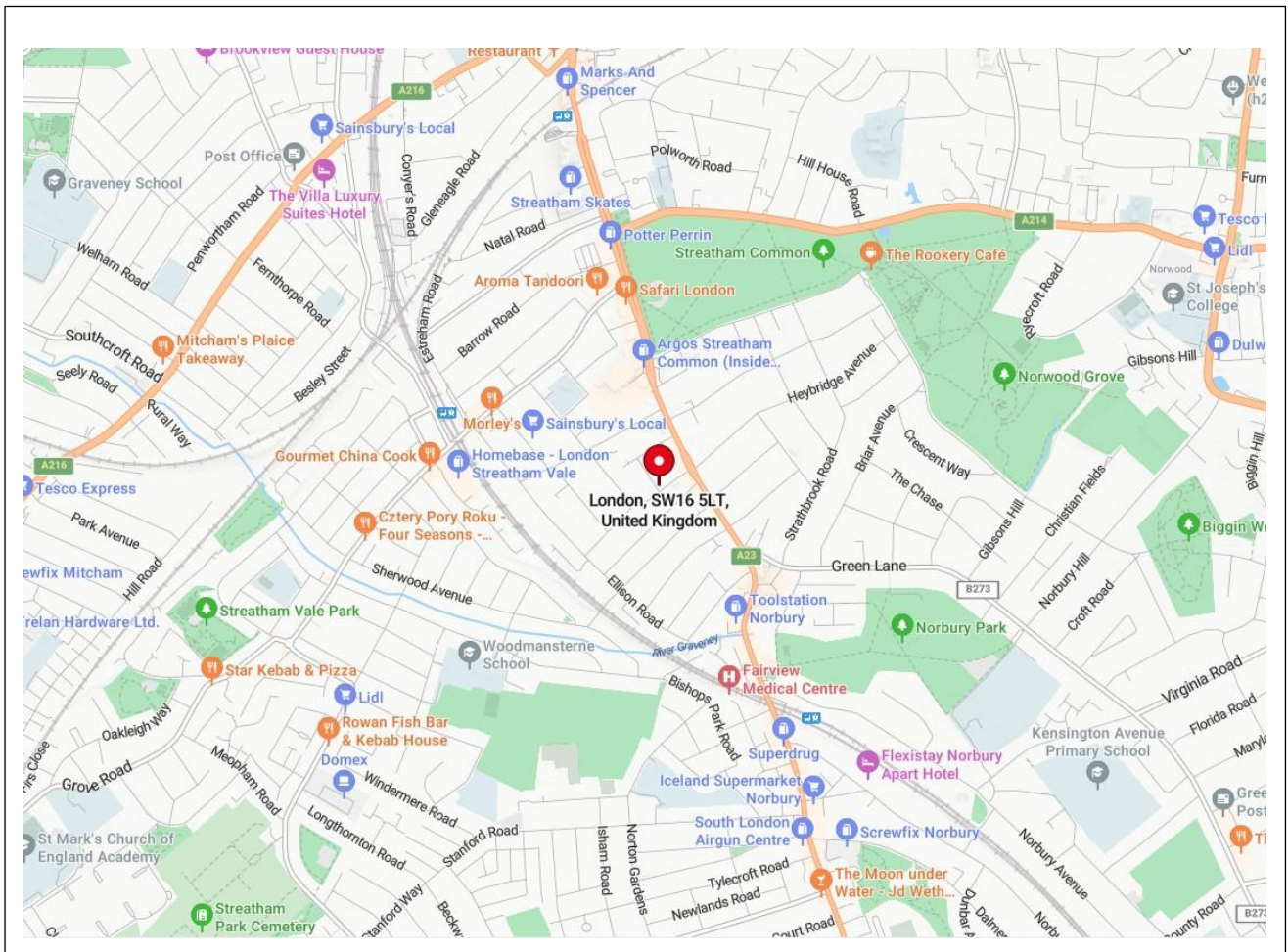
Company Registration No. 9488977



# EPC



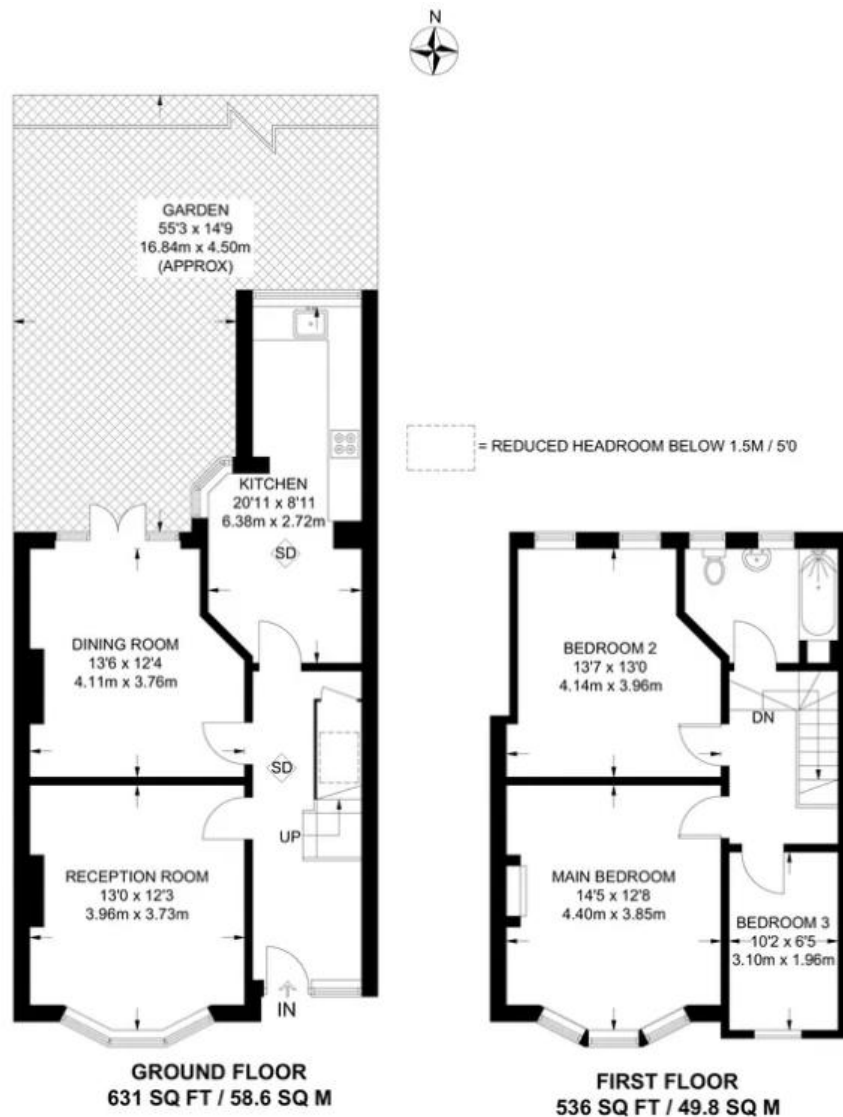
# MAP



**Croydon Branch: Crown Lets 4u Ltd, 292 London Road, Croydon, Surrey, CR0 2TG**  
**Tel: 020 8684 6677      Email: [info@crownlets4u.co.uk](mailto:info@crownlets4u.co.uk)      Web: [www.crownlets4u.co.uk](http://www.crownlets4u.co.uk)**

**Streatham Branch: Crown Lets 4u Ltd, 145 Streatham High Road, London, SW16 6EG**  
**Tel: 020 8764 1111      Email: [info@crownrealestateld.com](mailto:info@crownrealestateld.com)      Web: [www.crownlets4u.co.uk](http://www.crownlets4u.co.uk)**  
 Company Registration No. 9488977

# Floor Plan



This plan has been drawn for illustrative and identification purposes only.

**Croydon Branch: Crown Lets 4u Ltd, 292 London Road, Croydon, Surrey, CR0 2TG**  
 Tel: 020 8684 6677 Email: [info@crowplets4u.co.uk](mailto:info@crowplets4u.co.uk) Web: [www.crowplets4u.co.uk](http://www.crowplets4u.co.uk)

**Streatham Branch: Crown Lets 4u Ltd, 145 Streatham High Road, London, SW16 6EG**  
 Tel: 020 8764 1111 Email: [info@crownrealestateld.com](mailto:info@crownrealestateld.com) Web: [www.crowplets4u.co.uk](http://www.crowplets4u.co.uk)

Company Registration No. 9488977