



Flat 6 Elmore, La Grande Route De Rozel, St. Martin, Jersey

£395,000

BROADLANDS

FINDING YOU A HOME SINCE 1972

Flat 6, Elmore, La Grande Route De Rozel

St. Martin

- Two bedroom ground floor apartment in St Martin
- Spacious open plan living area
- Fully tiled bathroom
- Low service charge
- Designated parking space
- Close to gastro pub, village green, school, M&S and doctors surgery
- Sole agent
- Contact Andrew 07797 814422 / andrew@broadlandsjersey.com



Flat 6, Elmore, La Grande Route De Rozel

St. Martin

Ground floor apartment in a country location, briefly consisting of two double bedrooms both with fitted wardrobes, contemporary fully tiled bathroom, bright open plan lounge / kitchen / diner, providing a comfortable and modern living space with good storage. Engineered wood flooring throughout and wet electric heating system. One designated parking space. The apartment is conveniently located a short stroll away from a gastropub, the village green, Marks & Spencer food outlet and doctors surgery. Contact Broadlands the vendors sole agents to book your viewing today.





Living

Open plan lounge / kitchen / diner. Fitted kitchen with breakfast bar.

Sleeping

Two double bedrooms with fitted wardrobes. House bathroom with three piece suite; bath with shower over, W.C. wash hand basin and electric heated towel rail.

Outside

Communal courtyard. Designated parking for one vehicle.

Restrictions

Regrettably no pets

Services

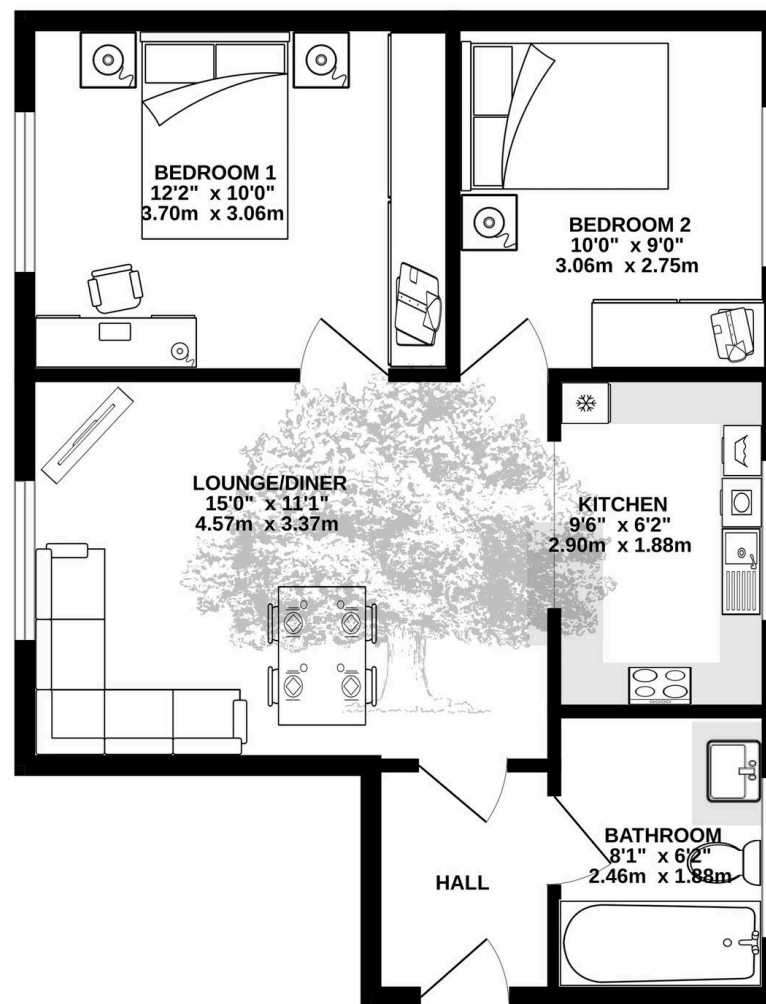
All mains. Wet electric heating throughout (electric boiler 2017). Fully double glazed. Service charge of £99.07 per month covers building insurance, power and general maintenance in the communal areas.







GROUND FLOOR
520 sq.ft. (48.3 sq.m.) approx.



TOTAL FLOOR AREA : 520 sq.ft. (48.3 sq.m.) approx.

Whilst every attempt has been made to ensure the accuracy of the floorplan contained here, measurements of doors, windows, rooms and any other items are approximate and no responsibility is taken for any error, omission or mis-statement. This plan is for illustrative purposes only and should be used as such by any prospective purchaser. The services, systems and appliances shown have not been tested and no guarantee as to their operability or efficiency can be given.
Made with Metropix 62025



Broadlands

Broadlands Estates, Library Place - JE2 3NL

07797 814422 • andrew@broadlandsjersey.com • www.broadlandsjersey.com/

BROADLANDS

FINDING YOU A HOME SINCE 1972