



PERRINS COURT
HAMPSTEAD VILLAGE, NW3



A wonderful Georgian house located at the very heart of Hampstead Village on a picturesque, cobble street that runs between the High Street and Heath Street, home to some of Hampstead's finest cafes and the local iconic restaurant the Villa Bianca.

The house was built in the early 1700s and is full of individual character and is beautifully presented having been recently renovated and equipped with an exceptional quality of fixtures and fittings.

The accommodation comprises around 1,553 sq ft and is arranged over 5 floors and complemented by a courtyard on the lower level and a small terrace on the top floor.

Hampstead Village boasts an array of shops, boutiques, restaurants, pubs and cafes with the principal travel link served by Hampstead underground station (Northern Line). The wonderful Heath is a short walk away.

GUIDE PRICE £3,495,000

SOLE AGENT

FREEHOLD

ACCOMMODATION & AMENITIES

ENTRANCE HALL, GUEST WC, 2 RECEPTION ROOMS, KITCHEN/DINING ROOM, 2 BEDROOMS WITH EN-SUITE BATHROOMS, COURTYARD, BALCONY, UTILITY ROOM IN THE VAULTS.



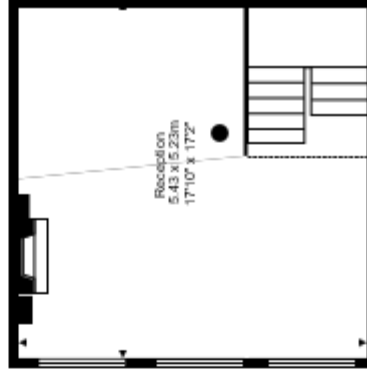
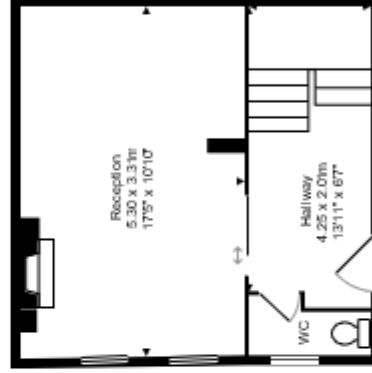
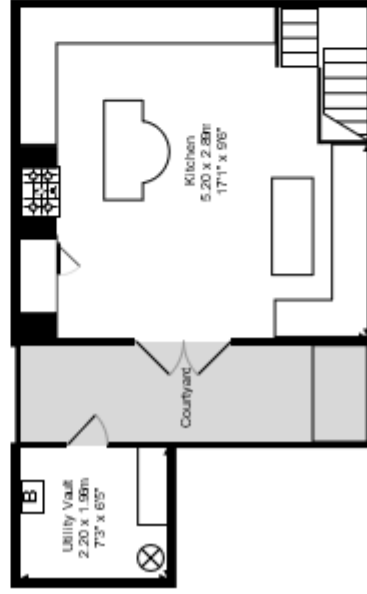
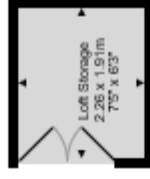
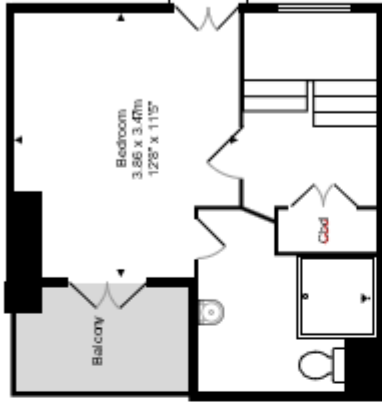








Perrins Court, NW3



Basement

Ground Floor

First Floor

Approx. Gross Internal Area: 144.2 m² ... 1553 ft² (excluding courtyard, balcony)

All measurements and areas are approximate only.
Dimensions are not to scale. The plan is for guidance only and must not be relied upon as a statement of fact.