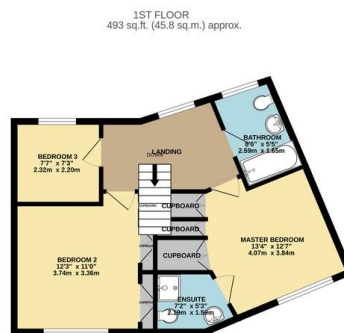


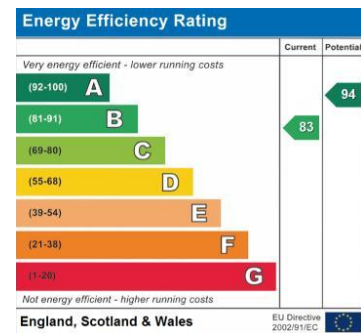
## FOR SALE

3 Bed Detached House in Windlass Drive, South Wigston LE18 4NZ  
Offers In Excess Of £325,000

Located in the highly sought after area of South Wigston and offered chain free this beautifully presented three bedroom detached property offers modern family living at its finest. With spacious reception areas, a convenient ground floor W.C, and a luxurious master bedroom with en-suite, this home is both stylish and practical. The property also benefits from a driveway and garage, all maintained to an immaculate standard throughout. Contact Phillips George today to arrange your viewing.



TOTAL FLOOR AREA: 987 sq.ft. (91.7 sq.m.) approx.  
While every attempt has been made to ensure the accuracy of the floorplan contained here, measurements of doors, windows, rooms and any other items are approximate and no responsibility is taken for any error, omission or misstatement. This plan is for illustrative purposes only and should be used as such by any prospective purchaser. The services, systems and appliances shown have not been tested and no guarantee as to their operability or efficiency can be given.  
Made with Metropix ©2025



- Modern Property
- Detached
- Three Bedrooms
- Ground Floor W.C
- Immaculate Presentation
- Master Ensuite
- Driveway
- Garage

**Agents Note:** Whilst every care has been taken to prepare these sales particulars, they are for guidance purposes only. All measurements are approximate and for general guidance purposes only and whilst every care has been taken to ensure their accuracy, they should not be relied upon and potential buyers are advised to recheck the measurements.

