



11a Fieldview, Norwich

£375,000 Freehold

Find flexible and spacious accommodation in this detached residence, catering to modern family living.

Find flexible and spacious accommodation in this detached residence, catering to modern family living. With a chain-free status, this home highlights an open-plan kitchen/dining room, a light-filled sitting room, four bedrooms and enclosed gardens. Set in the vibrant city of Norwich, its prime location ensures you are within close proximity to a wide range of local amenities including the university, train station and Norfolk and Norwich hospital. Don't miss the chance to acquire this home and experience the lifestyle it has to offer.

Location

Norwich NR5 is a vibrant area located in the southwest of Norwich, Norfolk. It includes several residential neighbourhoods, such as Bowthorpe, New Costessey, and Earlham, offering a mix of suburban and semi-rural living. The area is well-connected, with good public transport links to the city centre, making it ideal for both professionals and families. NR5 is home to a range of local amenities, including shops, schools, parks, and medical facilities.



Find flexible and spacious accommodation in this detached residence, catering to modern family living. With a chain-free status, this home highlights an open-plan kitchen/dining room, a light-filled sitting room, four bedrooms and enclosed gardens. Set in the vibrant city of Norwich, its prime location ensures you are within close proximity to a wide range of local amenities including the university, train station and Norfolk and Norwich hospital. Don't miss the chance to acquire this home and experience the lifestyle it has to offer.



Find flexible and spacious accommodation in this detached residence, catering to modern family living. With a chain-free status, this home highlights an open-plan kitchen/dining room, a light-filled sitting room, four bedrooms and enclosed gardens. Set in the vibrant city of Norwich, its prime location ensures you are within close proximity to a wide range of local amenities including the university, train station and Norfolk and Norwich hospital. Don't miss the chance to acquire this home and experience the lifestyle it has to offer.

Location

Norwich NR5 is a vibrant area located in the southwest of Norwich, Norfolk. It includes several residential neighbourhoods, such as Bowthorpe, New Costessey, and Earlham, offering a mix of suburban and semi-rural living. The area is well-connected, with good public transport links to the city centre, making it ideal for both professionals and families. NR5 is home to a range of local amenities, including shops, schools, parks, and medical facilities. Additionally, the proximity to the University of East Anglia adds a youthful and academic atmosphere to the region. The surrounding countryside offers opportunities for outdoor activities, while Norwich's historic centre and cultural attractions are just a short drive or bus ride away.

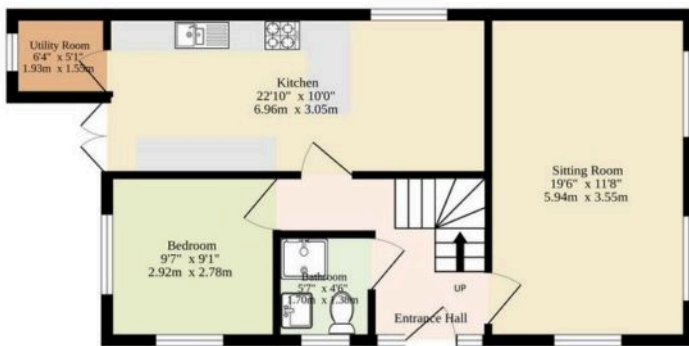
Fieldview

Upon entering the detached residence, you are greeted by a welcoming entrance hall, complemented by a ground floor shower room. Immediately capturing your attention is the comfortable sitting room, filled with an abundance of natural light, creating an inviting atmosphere for relaxation or entertainment. The open-plan kitchen/dining room is the heart of the home, well-equipped with fitted units and integrated appliances to enhance your cooking experience. The seamless flow to the dining area ensures effortless interaction when hosting occasions or casual dining with loved ones. With the presence of a utility room, for your additional storage and laundry essentials.

Across both floors you will encounter four bedrooms, each thoughtfully designed to offer relaxation and privacy. The principal bedroom flaunts a private ensuite, adding a luxury yet convenient touch. The ground floor bedroom has the versatility to be an office, dressing room or playroom, depending on your own requirements. The first floor bathroom comprises of a stylish three piece suite, accommodating all residents in the household.



Ground Floor
702 sq.ft. (65.2 sq.m.) approx.



1st Floor
619 sq.ft. (57.5 sq.m.) approx.



TOTAL FLOOR AREA : 1321 sq.ft. (122.7 sq.m.) approx.

Whilst every attempt has been made to ensure the accuracy of the floorplan contained here, measurements of doors, windows, rooms and any other items are approximate and no responsibility is taken for any error, omission or mis-statement. This plan is for illustrative purposes only and should be used as such by any prospective purchaser. The services, systems and appliances shown have not been tested and no guarantee as to their operability or efficiency can be given.
Made with Metropix ©2025

You can include any text here. The text can be modified upon generating your brochure.

You can include any text here. The text can be modified upon generating your brochure.

