



The Sinclair

Property Type



Detached / End Terrace

Bedrooms



3

Bathrooms



2

Size



1125 sqft

The Sinclair is a generous three-bedroom home entered via a covered porch that leads on to a large, naturally lit vestibule.

The space and light throughout the open-plan ground floor creates the feel of a loft apartment rather than a two-storey home. With a large kitchen / family area at the front and the lounge at the rear of the house, the Sinclair combines practicality with style.

The large sliding patio doors to the rear allow the interior and exterior spaces to merge. There is also a convenient downstairs cloakroom with WC.

The open-plan stair features a half landing window and leads to the bright upper hall. Upstairs we have built the washing machine and boiler into its own large cupboard, to keep it tucked away and to give somewhere to store all those laundry essentials.

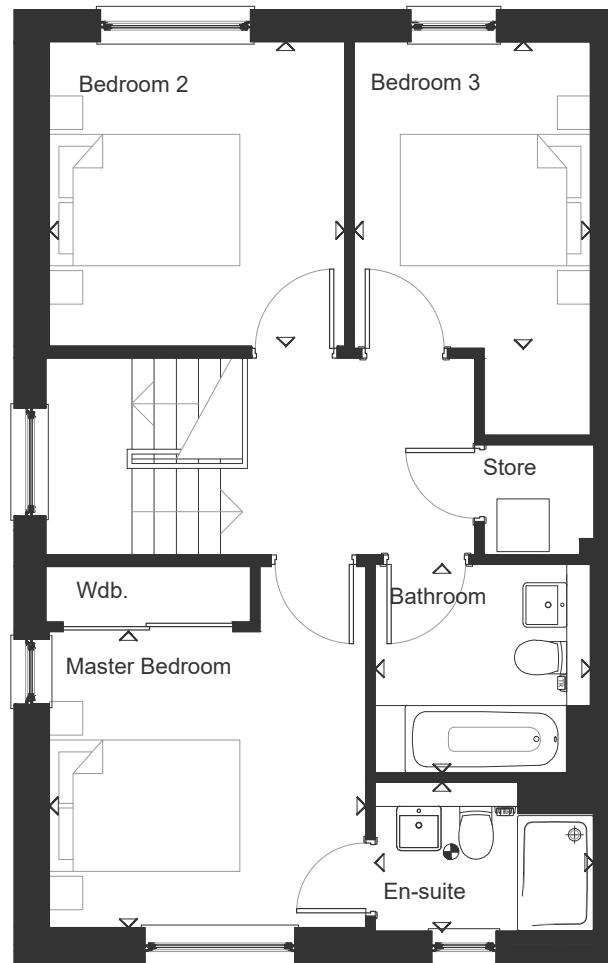
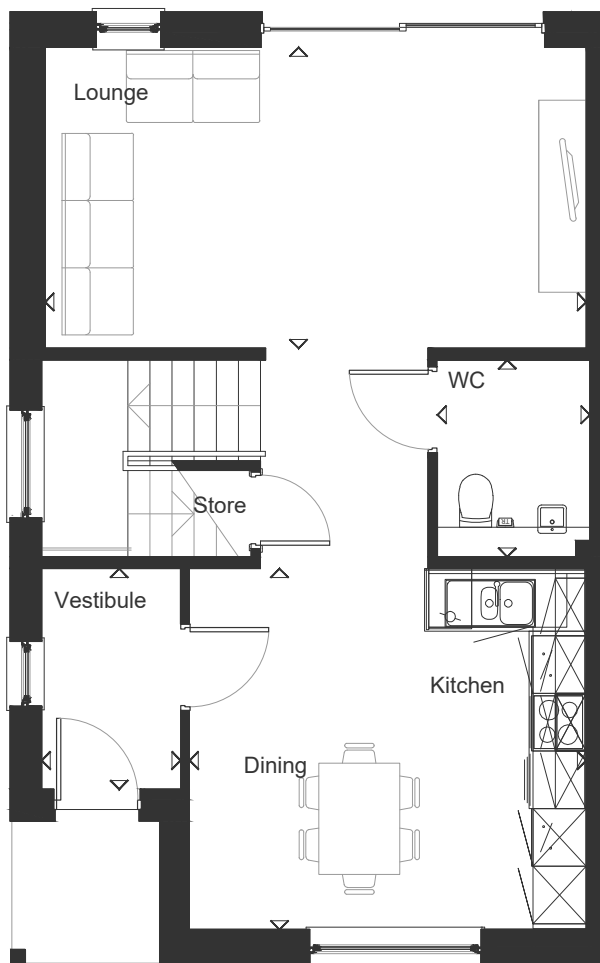
The master bedroom to the front has a fitted wardrobe and an en-suite shower room, a must for any modern family. There are two further double bedrooms to the rear, and family bathroom with back to wall white porcelain sanitaryware and chrome fittings.

Contact

www.whiteburn.co.uk/viewforth

Tel : 01592 382300

Email : sales@whiteburn.co.uk



The Sinclair

Property Type



Detached / End Terrace

Bedrooms



3

Bathrooms



2

Size



1125 sqft

Floor Plan

	Length mm	Width mm	Length	Width
Vestibule	2309	1419	7'7"	4'8"
Kitchen / Dining	3759	4180	12'4"	13'9"
WC	2050	1600	6'9"	5'3"
Lounge	5684	3134	18'8"	10'3"
Master Bedroom	3094	3322	10'2"	10'11"
En-suite	2294	1544	7'6"	5'1"
Bathroom	2169	2262	7'1"	7'5"
Bedroom 2	3102	3171	10'2"	10'5"
Bedroom 3	2482	3171	8'2"	10'5"