



The Dow

Property Type



Terrace / Semi detached

Bedrooms



3

Bathrooms



1

Size



968 sqft

The Dow is a 3 bed semi-detached or mid-terrace new build home. As with all our homes it has a generous open plan living space, an abundance of natural light and good storage.

We have designed a well proportioned vestibule space, with room for a baby buggy or a basket for the dog. Somewhere to greet your guests or kick off your shoes.

The vestibule has a glazed door which leads to the open plan ground floor. The fully integrated kitchen is at the heart of this home. At the front of the house, we have created a dining area, which can be used for dining, home schooling or an office. The rear of the house is your living area, with large sliding patio doors to the private garden.

We have built the washing machine into its own cupboard, to keep it tucked away, and the space under the stairs also provides additional storage and access to your meters and BT connection.

The master bedroom has deep fully fitted wardrobes, with bi-fold doors. There is a second double bedroom and third single bedroom for children or a great home office. The landing also has a great size cupboard.

Upstairs, light fills the landing from either the hall window or velux roof light.

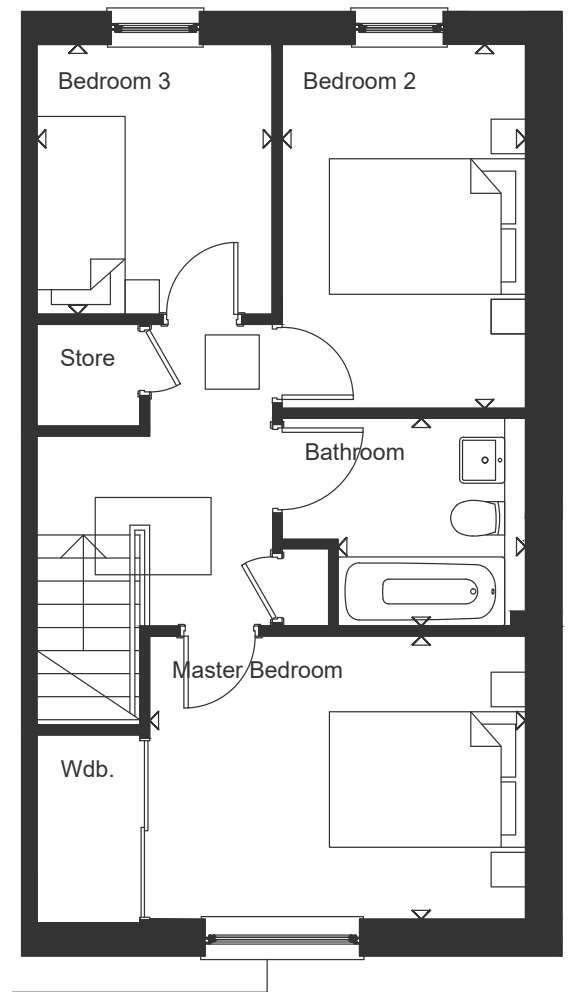
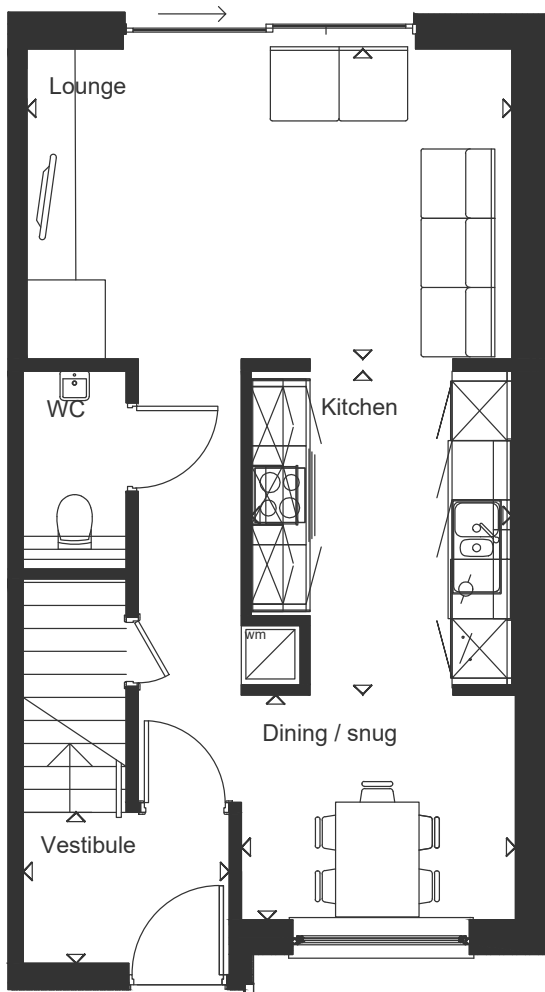
Our houses have a dual control heating system for the ground and upper floor.

Contact

www.whiteburn.co.uk/viewforth

Tel : 01592 382300

Email : sales@whiteburn.co.uk



The Dow

Property Type

Bedrooms

Bathrooms

Size



Terrace / Semi detached



3



1



968 sqft

Floor Plan

	Length mm	Width mm	Length	Width
Vestibule	2114	1525	6'11"	5'0"
Dining / Snug	2806	2274	9'2"	7'6"
Kitchen	3171	2658	10'5"	8'9"
Lounge	4931	3134	16'2"	10'3"
Master Bedroom	3831	2862	12'7"	9'5"
Bedroom 2	3678	2481	12'1"	8'2"
Bedroom 3	2727	2340	8'11"	7'8"
Bathroom	2481	2100	8'2"	6'11"