



SAXON
FIELDS

THE
GROSVENOR

3 BEDROOM DETACHED HOME (1,012ft²)



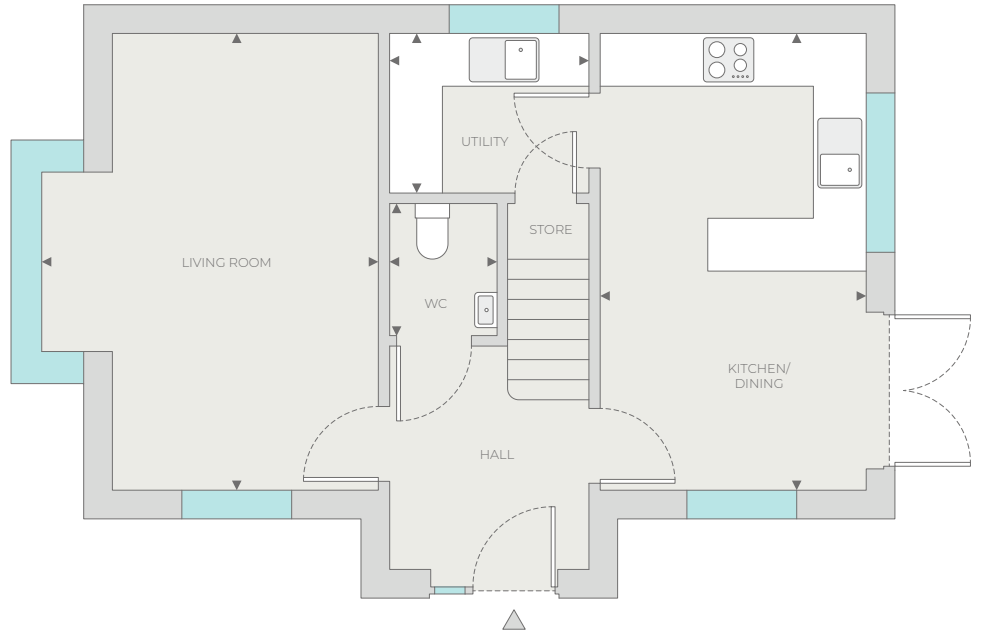
laurus

homes



THE GROSVENOR

3 BEDROOM
DETACHED HOME



OVERALL PLOT SIZE

94m² 1,012ft²

GROUND FLOOR

Kitchen/Dining
5.21m x 3.02m 17'2" x 9'11"

Utility
1.84m x 2.29m 6'0" x 7'6"

Cloakroom/WC
1.53m x 1.22m 5'0" x 4'0"

Living Room
5.21m x 3.83m 17'2" x 12'6"

FIRST FLOOR

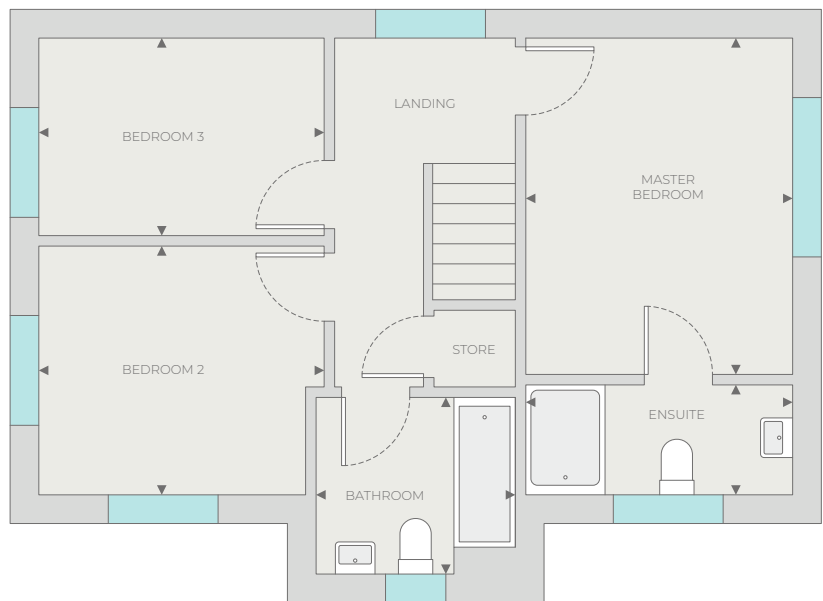
Master Bedroom
3.85m x 3.06m 12'7" x 10'0"

EnSuite
1.27m x 3.06m 4'2" x 10'0"

Bedroom 2
2.85m x 3.27m 9'4" x 10'8"

Bedroom 3
2.27m x 3.27m 7'5" x 10'8"

Bathroom
2.03m x 2.29m 6'8" x 7'6"



◀ Dimensions start. The floor plans above are intended to only give a general indication of the proposed floor layout and are not drawn to scale. Measurements are given to the widest point, are approximate and are given as a guide only. All measurements and areas may vary within a tolerance of 5%. Do not use these measurements for carpet sizes, appliance spaces or items of furniture. Kitchen, bathroom and utility layouts may differ to build. For further clarification regarding the treatment of individual plots, please ask your Sales Advisor. Unless specifically incorporated in writing into the sales contract the specification is not intended to form part of any contract or warranty.