



MILE



Woodhouse Road, London

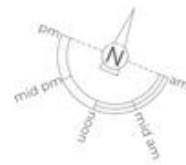
£2,000 pcm %tenure%

Mile are Delighted to offer this brand-new, two-bedroom, two-bathroom property available for rent in the desirable N12 9AY area. This modern residence offers a spacious open-plan living area, seamlessly integrating a fully-fitted kitchen equipped with top-of-the-line appliances. Both bedrooms are generously sized, with the master bedroom featuring an en-suite bathroom for added convenience. The property boasts high-quality finishes throughout and contemporary fixtures. Situated within a short walking distance to Woodside Park Station (Northern Line), it provides excellent transport links to central London. Local amenities, including shops, restaurants, and parks, are easily accessible, making this an ideal home for professionals or small families seeking comfort and convenience.

- Brand new
- Modern
- High specification
- Fully fitted
- Close to local amenities
- Available Now
- EPC Rating D
-
-
-

WOODHOUSE ROAD, N12 9AY

Approximate Gross Internal Area = 59.4 sq.m / 639 sq.ft



Ensuite
1.96m x 0.89m
6'5" x 2'11"



Bedroom
3.02m x 2.89m
9'11" x 9'6"

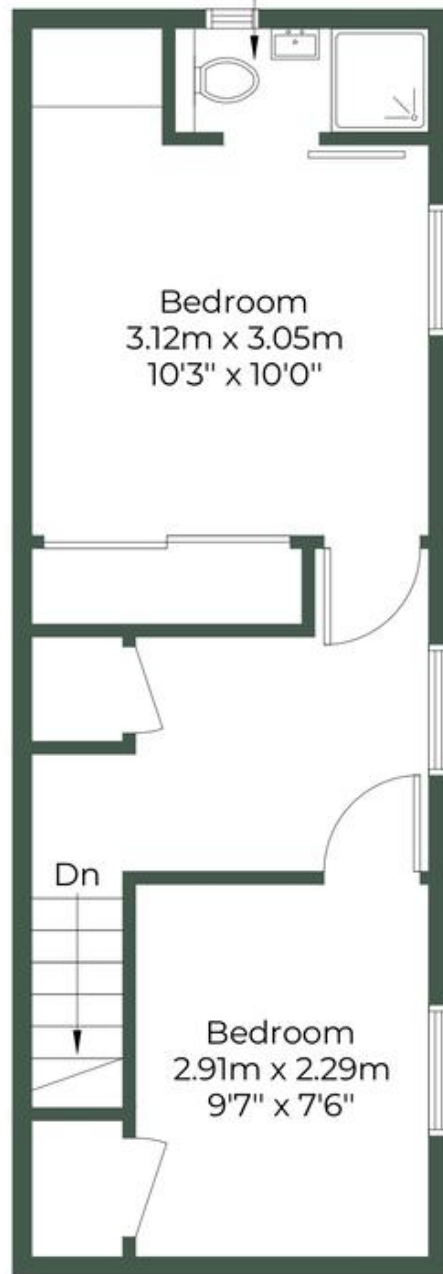
Kitchen /
Reception Room
5.61m x 3.06m
18'5" x 10'0"

Up

WC
1.17m x 0.91m
3'10" x 2'11"

Ground Floor

Ensuite
1.98m x 0.81m
6'6" x 2'8"



Bedroom
3.12m x 3.05m
10'3" x 10'0"

Dn

Bedroom
2.91m x 2.29m
9'7" x 7'6"

First Floor



MONEY LAUNDERING REGULATIONS 2003: Intending purchasers will be asked to produce identification documentation at a later stage and we would ask for your co-operation in order that there will be no delay in agreeing the sale.

General: While we endeavour to make our sales particulars fair, accurate and reliable, they are only a general guide to the property and, accordingly, if there is any point which is of particular importance to you, please contact the office and we will be pleased to check the position for you, especially if you are contemplating travelling some distance to view the property.

Measurements: These approximate room sizes are only intended as general guidance. You must verify the dimensions carefully before ordering carpets or any built-in furniture.

Services: Please note we have not tested the services or any of the equipment or appliances in this property, accordingly we strongly advise prospective buyers to commission their own survey or service reports before finalising their offer to purchase.