



**A CHAIN FREE FOUR BEDROOM EXTENDED HOME WITH SCOPE TO FURTHER  
EXTEND (STPP)**

George V Avenue, Pinner, HA5 5SX

**ROBSONS**



George V Avenue, Pinner, HA5 5SX

**NO ONWARD CHAIN • TWO RECEPTION ROOMS • KITCHEN • CONSERVATORY • GUEST WC • FOUR BEDROOMS • SHOWER ROOM • SIZEABLE REAR GARDEN • DETACHED GARAGE • SCOPE TO FURTHER EXTEND (STPP)**

### Description

Available to the market with no onward chain. An extended four-bedroom, semi-detached property offering fantastic potential and scope to further extend (STPP), with the added benefit of a sizeable rear garden and a detached garage. The property is located within easy reach of North Harrow, Hatch End and Pinner High Streets, with a number of local schools nearby, including Nower Hill High School and Pinner Park Primary School.

The ground floor comprises an entrance porch and hallway, a guest WC, two reception rooms, a kitchen and a conservatory. To the first floor there are two double bedrooms, a further bedroom and a shower room, with the second floor hosting the principal bedroom complete with fitted wardrobes.







This property boasts a sizeable rear garden with shrub borders, as well as a small front garden. There is a detached garage set back from the property, that is accessed via a shared driveway.

### Location

George V Avenue is perfectly placed for a number of local high streets and a variety of shopping facilities, restaurants, coffee houses and popular supermarkets. For commuters, nearby Pinner and North Harrow Stations provide a regular service into London via the Metropolitan Line, with the Overground services available at Headstone Lane and Hatch End Stations.

The area is well served by primary and secondary schooling, including Nower Hill High School (walking distance), and Pinner Park Primary School.

### Additional Information

Tenure: Freehold

Local Authority: London Borough of Harrow

Council Tax Band: E

Energy Efficiency Rating: TBC

For additional information, please refer to [www.robsonswb.com](http://www.robsonswb.com) or call us on: 020 8866 8083.



Approximate Gross Internal Area  
 Ground Floor = 66.4 sq m / 715 sq ft  
 First Floor = 49.3 sq m / 531 sq ft  
 Second Floor = 24.2 sq m / 260 sq ft  
 Total = 139.9 sq m / 1,506 sq ft  
 (Excluding Garage)



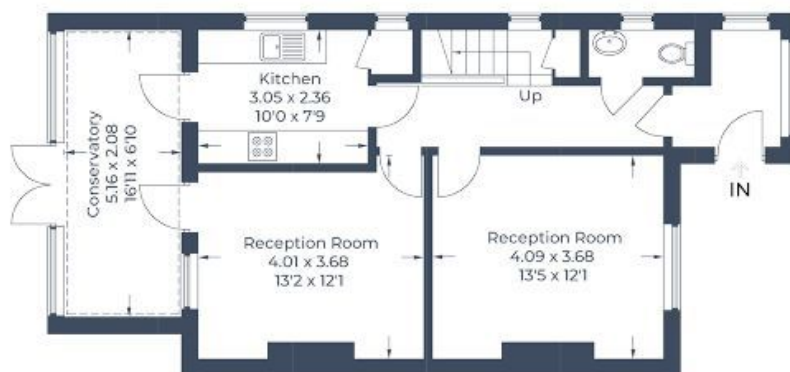
 = Reduced headroom below 1.5m / 5'0"



Garage  
 (Not Shown In Actual Location / Orientation)



**Second Floor**



**Ground Floor**



**First Floor**

Illustration for identification purposes only,  
 measurements are approximate, not to scale.  
 © CJ Property Marketing Produced for Robsons

**ROBSONS**

1 High Street, Pinner HA5 5PJ  
 Tel: 020 8866 8083 Email: pinner@robsonswb.com

[www.robsonswb.com](http://www.robsonswb.com)

SCAN TO VISIT



OUR WEBSITE

Important notice: Robsons, their clients and any joint agents give notice that 1: They are not authorised to make or give any representations or warranties in relation to the property either here or elsewhere, either on their own behalf or on behalf of their client or otherwise. They assume no responsibility for any statement that may be made in these particulars. These particulars do not form part of any offer or contract and must not be relied upon as statements or representations of fact. 2: Any areas, measurements or distances are approximate. Plot sizes and dimensions are taken from Promap and are approximate. The text, photographs and plans are for guidance only and are not necessarily comprehensive. It should not be assumed that the property has all necessary planning, building regulation or other consents and Robsons have not tested any services, equipment or facilities. Purchasers must satisfy themselves by inspection or otherwise.