

welcome to
Deva Green
Chester



01244 445 178

everything considered.

when it comes to new homes, we think of *everything*.

There's so much to consider when you're looking for a new home. From the size to the location, the build quality to the price, making the right choice ***really matters***.

At Anwyl Homes, we know what it's like. We should do. After all, we've been building high quality new homes for decades, guiding our customers through the process and helping to unlock happy times ahead.

Whether you're looking for a cosy first property, a spacious family base, or you want to downsize now the kids have moved on, there's an Anwyl home that's right for you.

By combining traditional styling and quality workmanship with the best of today's modern features – not to mention personal touches and friendly smiles every step of the way – your Anwyl experience begins the moment you get in touch. Because with every new home we build, you can be sure we're thinking of you.

Anwyl homes. Everything considered.

*the opportunity to
make your home
your own*

www.anwylhomes.co.uk



got
questions?

call...

**01244
445 178**

everything considered.

ANWYL
thoughtful homes

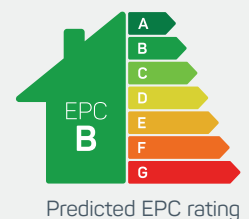


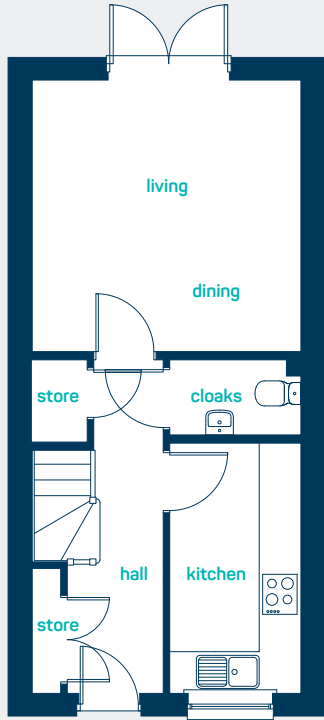
the coxley

2 bed semi-detached

A *stunning* 2 bedroom home perfect for first-time buyers. Key features include a spacious living room with french doors leading out to the rear garden, two double bedrooms and separate downstairs cloaks.

www.anwylhomes.co.uk



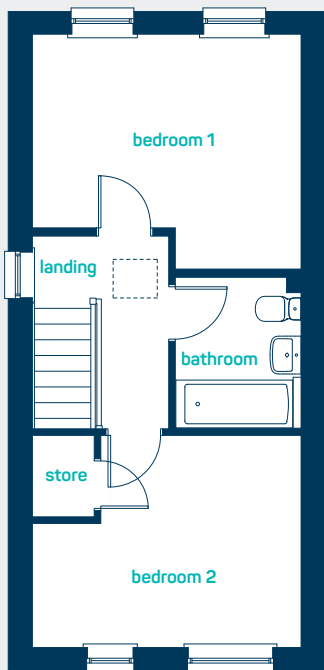


perfect for
first-time buyers

ground floor

living room/dining 13'0" x 12'10"
kitchen 12'0" x 6'3"
cloaks 6'3" x 3'7"

living room/dining 3.95m x 3.9m
kitchen 3.65m x 1.9m
cloaks 1.9m x 1.09m



first floor

bedroom 1 12'10" x 11'3"
bedroom 2 12'10" x 10'1"
bathroom 7'2" x 6'3"

bedroom 1 3.9m x 3.43m
bedroom 2 3.9m x 3.08m
bathroom 2.18m x 1.91m

the coxley
2 bed semi-detached

ANWYL
thoughtful homes

**NEW
HOMES
QUALITY
CODE**

**NEW HOMES
SERVICE
OMBUDSMAN**

www.anwylhomes.co.uk

Anwyl Homes is a Registered Developer with the NHQB. This is a computer-generated image of the coxley, elevation treatment may vary. Room sizes are approximate, dimensions are taken from the longest room point (please consult homes advisor for measurement points). Plots may be handed and any garages may be single or double. Kitchen and bathroom layouts are indicative. These plans are correct at the time of going to press, but may be subject to change during construction. Please ensure that you check for specific plot details. 12/12/22.

everything considered.

ANWYL
thoughtful homes

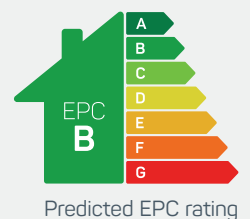


the bretton

3 bed semi detached

A 3 bedroom semi-detached home. *Perfect* as a family starter home or for first-time buyers. Key features include an open plan kitchen/diner and master bedroom with en-suite.

www.anwylhomes.co.uk



ideal for
first time buyers



ground floor

kitchen/dining 15'4" x 10'9"
living room 16'8" x 12'0"
cloaks 5'11" x 3'1"

kitchen/dining 4.67m x 3.28m
living room 5.08m x 3.66m
cloaks 1.79m x 0.95m

first floor

bedroom 1 12'10" x 8'4"
en-suite 8'4" x 5'6"
bedroom 2 11'0" x 8'4"
bedroom 3 7'7" x 6'8"
bathroom 7'2" x 6'8"

bedroom 1 3.91m x 2.53m
en-suite 2.53m x 1.67m
bedroom 2 3.35m x 2.53m
bedroom 3 2.30m x 2.04m
bathroom 2.18m x 2.02m

the bretton
3 bed semi detached

ANWYL
thoughtful homes

NEW HOMES QUALITY CODE

NEW HOMES OMBUDSMAN SERVICE

www.anwylhomes.co.uk

Anwyl Homes is a Registered Developer with the NHQB. This is a computer-generated image of the bretton, elevation treatment may vary. Room sizes are approximate, dimensions are taken from the longest room point (please consult homes advisor for measurement points). Plots may be handed and any garages may be single or double. Kitchen and bathroom layouts are indicative. These plans are correct at the time of going to press, but may be subject to change during construction. Please ensure that you check for specific plot details. 01/11/22.

everything considered.

ANWYL
thoughtful homes

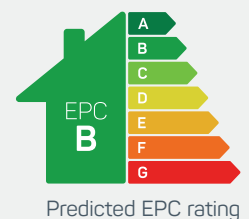


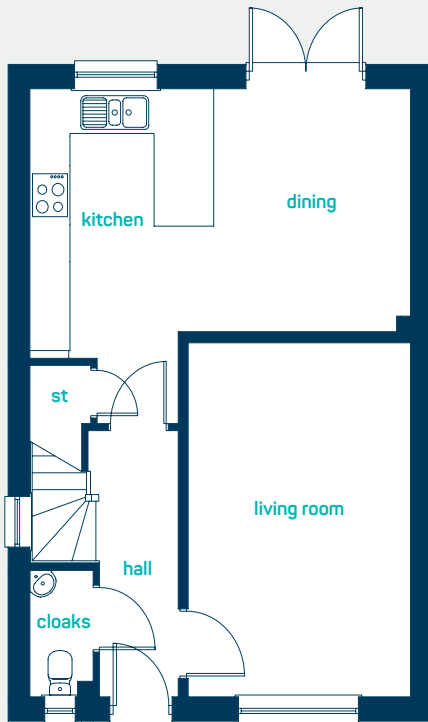
the bunbury

3 bed detached

Perfect as a *family* starter home or for first-time buyers. Key features include 3 double bedrooms and an open plan kitchen family room perfect for modern living.

www.anwylhomes.co.uk

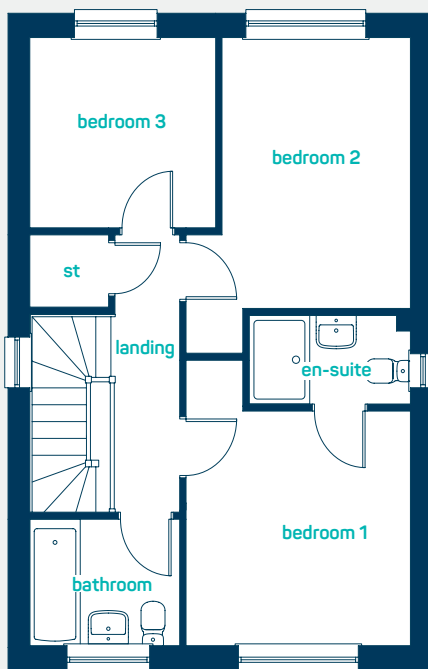




perfect for
new families

ground floor

kitchen/dining	18'10" x 12'0"
living room	15'9" x 11'0"
cloaks	5'7" x 3'4"
kitchen/dining	5.75m x 3.64m
living room	4.79m x 3.36m
cloaks	1.71m x 1.02m



first floor

bedroom 1	12'8" x 11'1"
(into door)	
en-suite	8'0" x 3'11"
bedroom 2	14'0" x 11'1"
(into door)	
bedroom 3	9'3" x 8'5"
bathroom	7'5" x 5'7"
bedroom 1	3.86m x 3.39m
(into door)	
en-suite	2.44m x 1.2m
bedroom 2	4.27m x 3.39m
(into door)	
bedroom 3	2.81m x 2.57m
bathroom	2.26m x 1.71m

the bunbury
3 bed detached

ANWYL
thoughtful homes

NEW HOMES QUALITY CODE

NEW HOMES OMBUDSMAN SERVICE

www.anwylhomes.co.uk

Anwyl Homes is a Registered Developer with the NHQB. This is a computer-generated image of the bunbury detached (hipped), elevation treatment may vary. Room sizes are approximate, dimensions are taken from the longest room point (please consult homes advisor for measurement points). Plots may be handed and any garages may be single or double. Kitchen and bathroom layouts are indicative. These plans are correct at the time of going to press, but may be subject to change during construction. Please ensure that you check for specific plot details. 01/11/22.

everything considered.

ANWYL
thoughtful homes

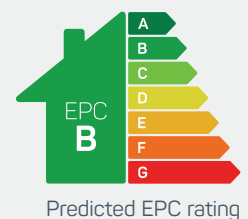


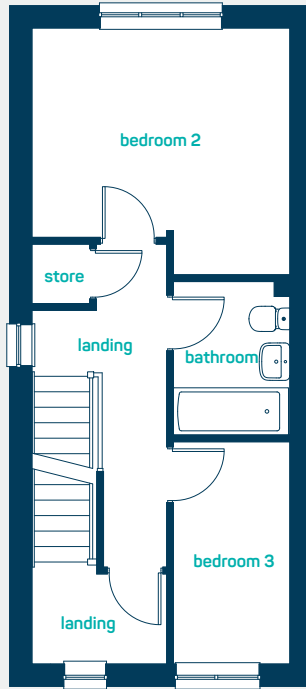
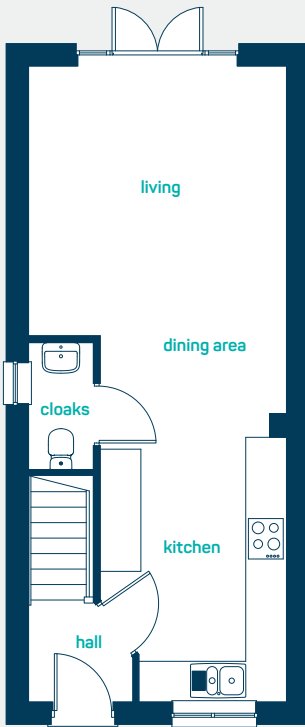
the snowdon

3 bed semi-detached

A 2.5 storey 3 bedroom semi-detached home. Key features include *open plan* kitchen, living and dining room with French doors to the rear, 3 bedrooms including master bedroom with en-suite, *dressing room* and separate family bathroom.

www.anwylhomes.co.uk





modern
open plan living

ground floor

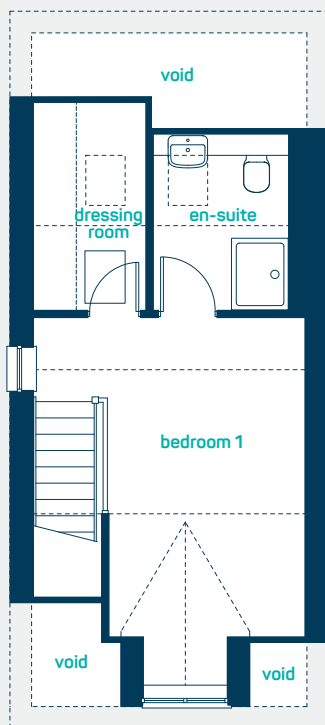
kitchen/
dining/living 30'9" x 12'6"
cloaks 6'3" x 3'0"

kitchen/
dining/living 9.37m x 3.80m
cloaks 1.90m x 0.91m

first floor

bedroom 2 12'6" x 11'10"
bedroom 3 10'9" x 5'8"
bathroom 7'5" x 5'8"

bedroom 2 3.80m x 3.61m
bedroom 3 3.27m x 1.72m
bathroom 2.26m x 1.72m



second floor

bedroom 1 (inc dorma) 17'0" x 12'6"
dressing room 9'8" x 5'2"
en-suite 9'1" x 6'3"

bedroom 1 (inc dorma) 5.18m x 3.80m
dressing room 2.94m x 1.58m
en-suite 2.77m x 1.90m

the snowdon
3 bed semi-detached

ANWYL
thoughtful homes

**NEW
HOMES
QUALITY
CODE**

**NEW HOMES
OMBUDSMAN
SERVICE**

www.anwylhomes.co.uk

Anwyl Homes is a Registered Developer with the NHQB. This is a computer-generated image of the snowdon, elevation treatment may vary. Room sizes are approximate, dimensions are taken from the longest room point (please consult homes advisor for measurement points). Plots may be handed and any garages may be single or double. Kitchen and bathroom layouts are indicative. These plans are correct at the time of going to press, but may be subject to change during construction. Please ensure that you check for specific plot details. 01/11/22.

everything considered.

ANWYL
thoughtful homes

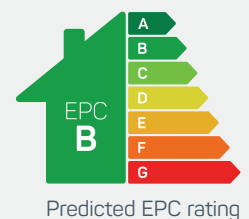


the appleton

3 bed detached

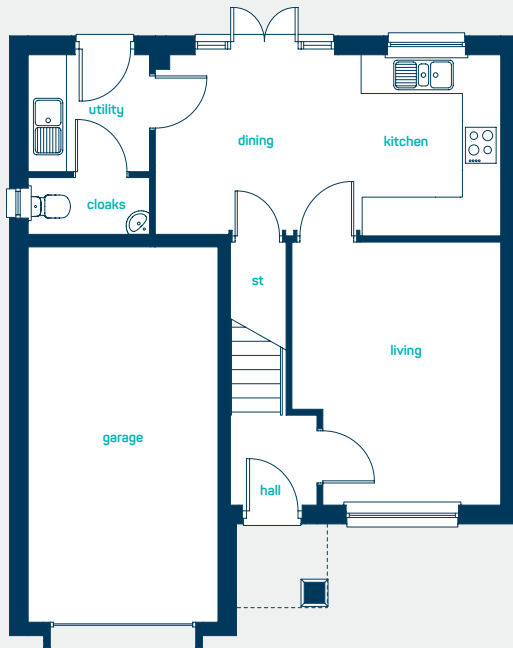
A *stunning* 3 bedroom home ideal for buyers looking for spacious, modern living. Key features include open plan kitchen diner, separate utility room and three large bedrooms.

www.anwylhomes.co.uk





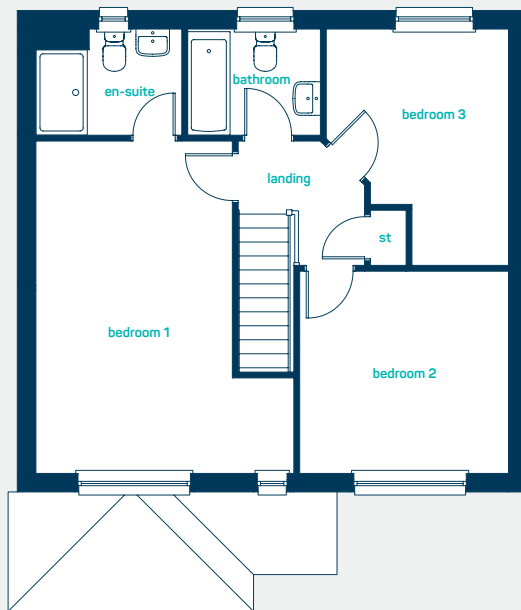
beautiful
open plan living



ground floor

kitchen/dining	18'5" x 9'5"
utility	6'5" x 6'1"
living room	13'9" x 11'1"
cloaks	6'5" x 3'0"

kitchen/dining	5.61m x 2.87m
utility	1.95m x 1.86m
living room	4.20m x 3.38m
cloaks	1.95m x 0.92m



first floor

bedroom 1	17'9" x 13'9"
en-suite	7'9" x 5'7"
bedroom 2	11'1" x 10'9"
bedroom 3	12'7" x 9'8"
bathroom	7'1" x 5'7"

bedroom 1	5.40m x 4.18m
en-suite	2.35m x 1.71m
bedroom 2	3.38m x 3.28m
bedroom 3	3.84m x 2.95m
bathroom	2.17m x 1.71m



the appleton
3 bed detached

ANWYL
thoughtful homes

NEW
HOMES
QUALITY
CODE

NEW HOMES
SERVICE
OMBUDSMAN

www.anwylhomes.co.uk

Anwyl Homes is a Registered Developer with the NHQB. This is a computer-generated image of the appleton, elevation treatment may vary. Room sizes are approximate, dimensions are taken from the longest room point (please consult homes advisor for measurement points). Plots may be handed and any garages may be single or double. Kitchen and bathroom layouts are indicative. These plans are correct at the time of going to press, but may be subject to change during construction. Please ensure that you check for specific plot details. 01/11/22.

everything considered.

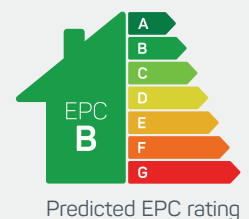


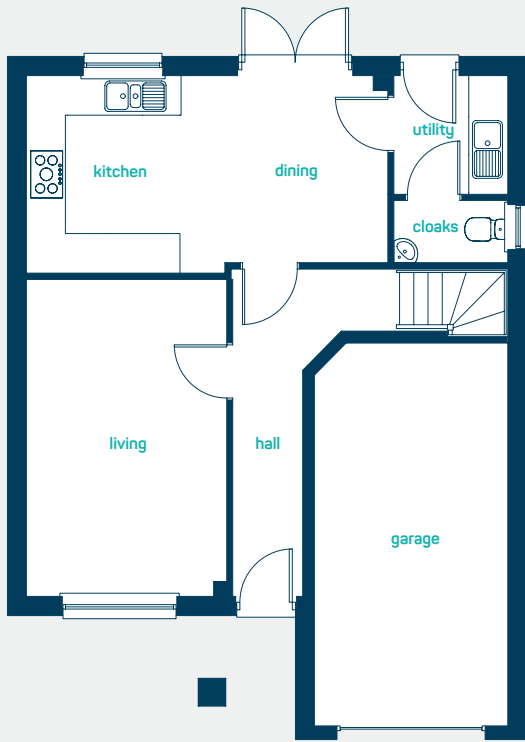
the lymm

4 bed detached with garage

A *spacious* 4-bedroom detached home. The Lymm is thoughtfully designed to make the most of the space available, providing a well-planned open plan living space and a separate lounge in which to relax. Boasting 4 generously sized bedrooms, integral garage, lovely high ceilings and a roofed porch the lymm is designed for today's family.

www.anwylhomes.co.uk

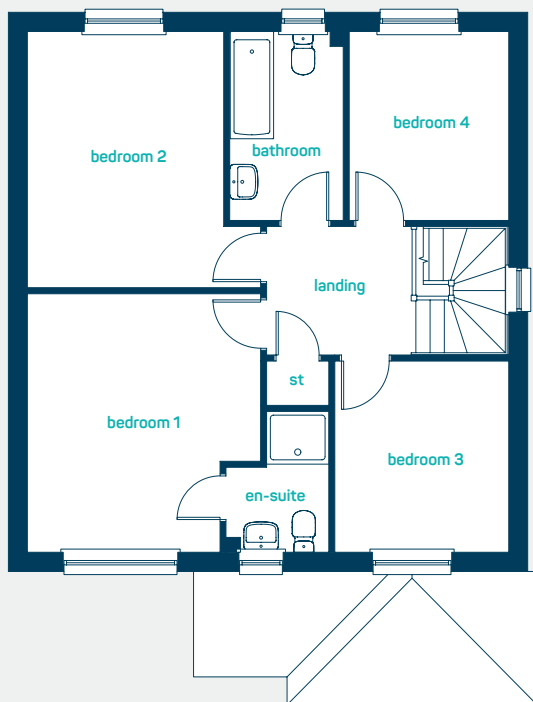




large open plan
kitchen diner

ground floor

kitchen/dining	18'11" x 10'1"
utility	6'1" x 5'11"
living room	16'3" x 10'5"
cloaks	5'11" x 3'2"
kitchen/dining	5.76m x 3.07m
utility	1.85m x 1.80m
living room	4.96m x 3.18m
cloaks	1.80m x 0.96m



first floor

bedroom 1	13'4" x 12'2"
en-suite	7'3" x 5'5"
bedroom 2	13'2" x 12'2"
bedroom 3	9'10" x 9'1"
bedroom 4	9'9" x 8'4"
bathroom	9'9" x 6'0"
bedroom 1	4.06m x 3.71m
en-suite	2.20m x 1.65m
bedroom 2	4.02m x 3.71m
bedroom 3	3.00m x 2.76m
bedroom 4	2.96m x 2.53m
bathroom	2.96m x 1.82m



the lymm
4 bed detached with garage

ANWYL
thoughtful homes

NEW HOMES QUALITY CODE

NEW HOMES OMBUDSMAN SERVICE

www.anwylhomes.co.uk

Anwyl Homes is a Registered Developer with the NHQB. This is a computer-generated image of the lymm, elevation treatment may vary. Room sizes are approximate, dimensions are taken from the longest room point (please consult homes advisor for measurement points). Plots may be handed and any garages may be single or double. Kitchen and bathroom layouts are indicative. These plans are correct at the time of going to press, but may be subject to change during construction. Please ensure that you check for specific plot details. 12/12/22 (grand version).

everything considered.

ANWYL
thoughtful homes

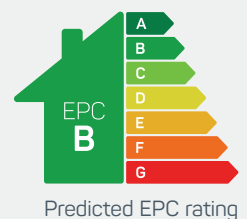


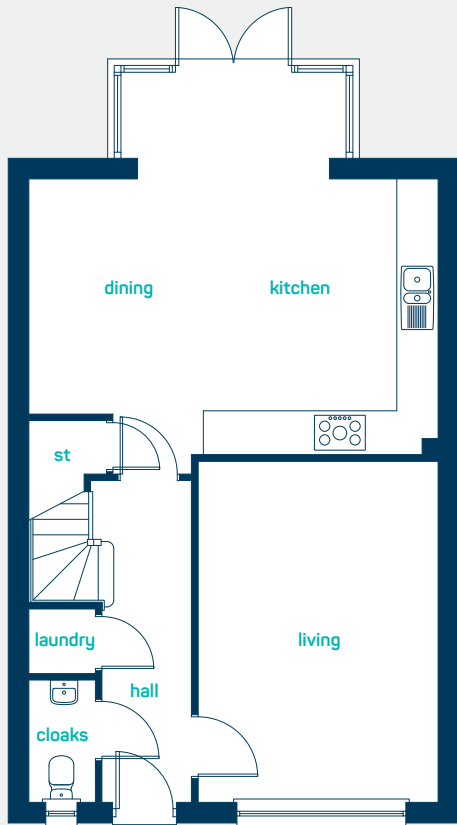
the farndon

4 bed detached

A *spacious* 4 bedroom detached family home. Key features include a large separate living room, master bedroom with en-suite and open plan kitchen, dining room.

www.anwylhomes.co.uk



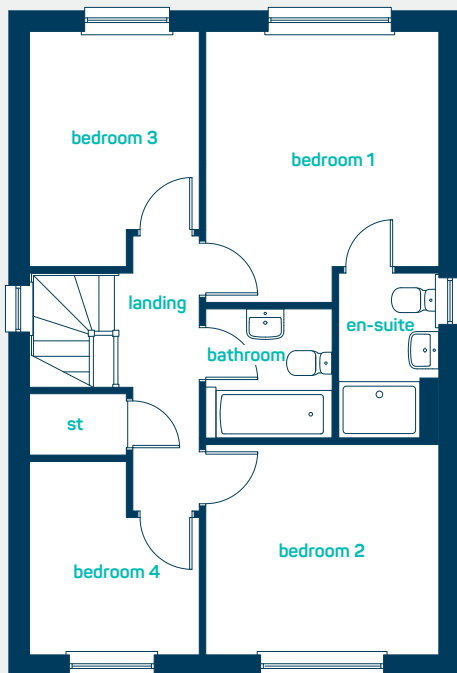


ideal for
spacious living

ground floor

kitchen/dining 19'7" x 18'5"
(into pod)
laundry cupboard 3'2" x 2'11"
cloaks 5'10" x 3'2"
living room 16'4" x 11'5"

kitchen/dining 5.97m x 5.60m
(into pod)
laundry cupboard 0.96m x 0.90m
cloaks 1.78m x 0.96m
living room 4.97m x 3.48m



first floor

bedroom 1 13'0" x 11'2"
en-suite 8'0" x 4'9"
bedroom 2 11'2" x 10'0"
bedroom 3 11'2" x 8'1"
bedroom 4 9'2" x 8'0"
bathroom 6'3" x 6'1"

bedroom 1 3.96m x 3.40m
en-suite 2.43m x 1.45m
bedroom 2 3.40m x 3.05m
bedroom 3 3.41m x 2.47m
bedroom 4 2.80m x 2.45m
bathroom 1.90m x 1.86m



the farndon
4 bed detached

ANWYL
thoughtful homes

NEW HOMES QUALITY CODE

NEW HOMES OMBUDSMAN SERVICE

www.anwylhomes.co.uk

Anwyl Homes is a Registered Developer with the NHQB. This is a computer-generated image of the farndon pod variant, elevation treatment may vary. Room sizes are approximate, dimensions are taken from the longest room point (please consult homes advisor for measurement points). Plots may be handed and any garages may be single or double. Kitchen and bathroom layouts are indicative. These plans are correct at the time of going to press, but may be subject to change during construction. Please ensure that you check for specific plot details. 12/12/22.

everything considered.

ANWYL
thoughtful homes

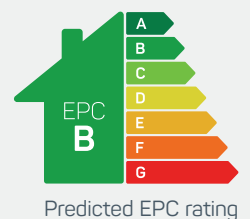


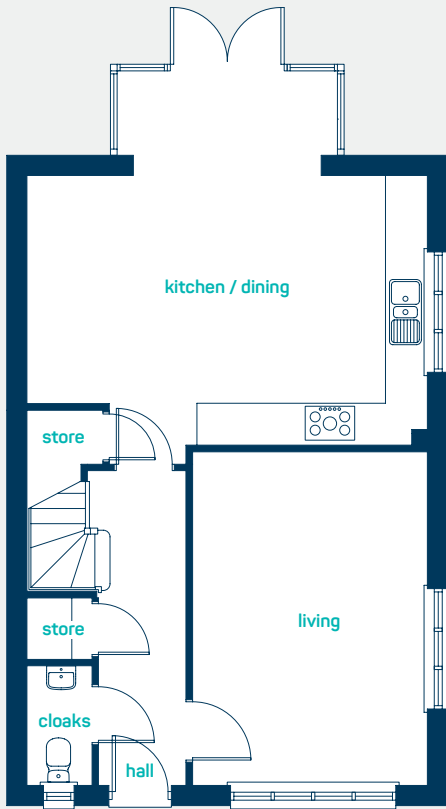
the farndon DA

4 bed detached

A *spacious* 4 bedroom detached family home. Key features include a large separate living room, master bedroom with en-suite and open plan kitchen, dining room.

www.anwylhomes.co.uk



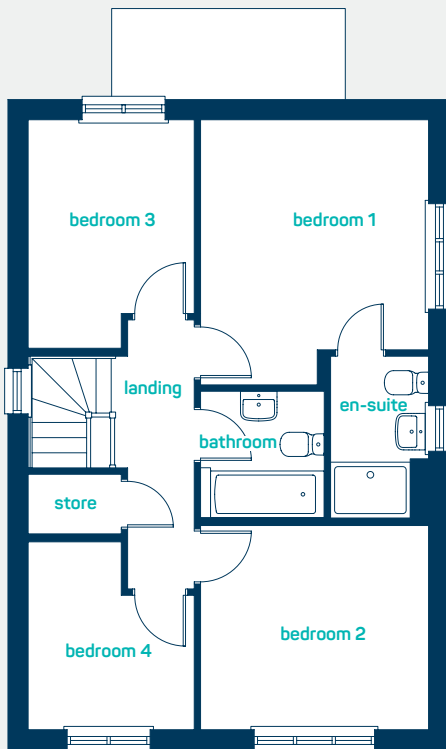


ideal for
spacious living

ground floor

kitchen/dining	19'7" x 18'5"
living room	16'4" x 11'5"
laundry cupboard	3'2" x 2'11"
cloaks	5'10" x 3'2"

kitchen/dining	5.97m x 5.60m
living room	4.97m x 3.48m
laundry cupboard	0.96m x 0.90m
cloaks	1.78m x 0.96m



first floor

bedroom 1	13'0" x 11'2"
en-suite	8'0" x 4'9"
bedroom 2	11'2" x 10'0"
bedroom 3	11'2" x 8'1"
bedroom 4	9'2" x 8'1"
bathroom	6'3" x 6'1"

bedroom 1	3.96m x 3.40m
en-suite	2.43m x 1.45m
bedroom 2	3.40m x 3.05m
bedroom 3	3.41m x 2.47m
bedroom 4	2.80m x 2.47m
bathroom	1.90m x 1.86m

the farndon DA
4 bed detached

ANWYL
thoughtful homes

NEW HOMES QUALITY CODE

NEW HOMES OMBUDSMAN SERVICE

www.anwylhomes.co.uk

Anwyl Homes is a Registered Developer with the NHQB. This is a computer-generated image of the farndon DA, elevation treatment may vary. Room sizes are approximate, dimensions are taken from the longest room point (please consult homes advisor for measurement points). Plots may be handed and any garages may be single or double. Kitchen and bathroom layouts are indicative. These plans are correct at the time of going to press, but may be subject to change during construction. Please ensure that you check for specific plot details. 01/11/22 (DA pod version).

everything considered.

ANWYL
thoughtful homes

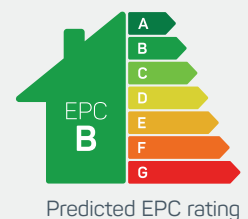


the ascot

4 bed detached with garage

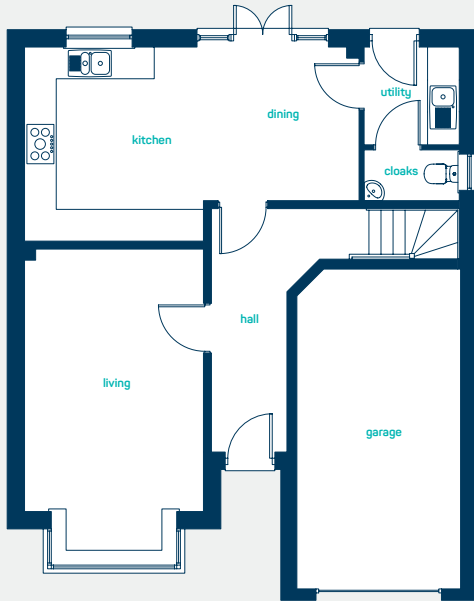
A 4 bedroom *detached* home. Key features include a separate living room, 4 double bedrooms and master bedroom with en-suite.

www.anwylhomes.co.uk





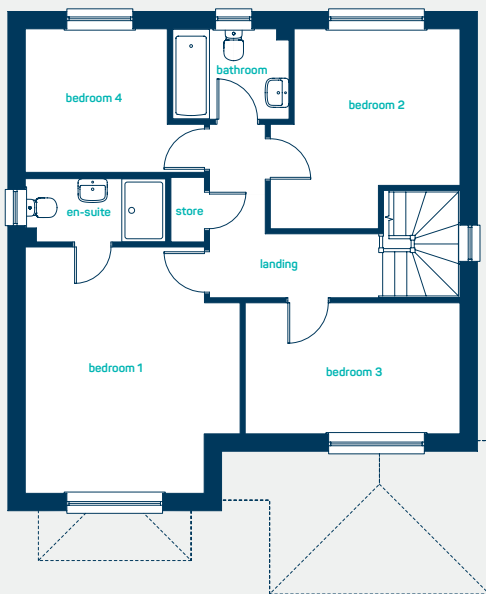
ideal for
spacious living



ground floor

kitchen/dining	20'9" x 12'1"
utility	6'1" x 5'11"
living room(inc bay)	18'11" x 11'1"
cloaks	5'11" x 3'2"

kitchen/dining	6.33m x 3.67m
utility	1.85m x 1.80m
living room(inc bay)	5.75m x 3.38m
cloaks	1.80m x 0.96m



first floor

bedroom 1	15'4" x 13'4"
en-suite	8'9" x 3'11"
bedroom 2	12'5" x 11'9"
bedroom 3	13'4" x 8'2"
bedroom 4	11'1" x 8'11"
bathroom	7'3" x 5'7"

bedroom 1	4.66m x 4.06m
en-suite	2.66m x 1.20m
bedroom 2	3.78m x 3.59m
bedroom 3	4.06m x 2.48m
bedroom 4	3.39m x 2.71m
bathroom	2.21m x 1.71m

the ascot
4 bed detached with garage

ANWYL
thoughtful homes

**NEW
HOMES
QUALITY
CODE**

**NEW HOMES
OMBUDSMAN
SERVICE**

www.anwylhomes.co.uk

Anwyl Homes is a Registered Developer with the NHQB. This is a computer-generated image of the ascot, elevation treatment may vary. Room sizes are approximate, dimensions are taken from the longest room point (please consult homes advisor for measurement points). Plots may be handed and any garages may be single or double. Kitchen and bathroom layouts are indicative. These plans are correct at the time of going to press, but may be subject to change during construction. Please ensure that you check for specific plot details. 01/11/22 (grand version).

everything considered.

ANWYL
thoughtful homes

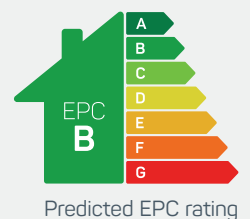


the evesham

4 bed detached

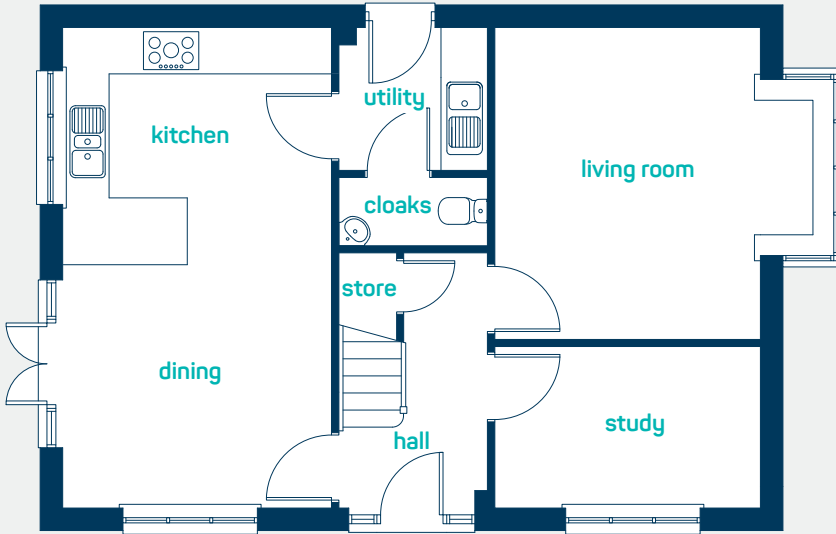
A *traditional* double fronted 4 bedroom home filled with modern interiors. Stunning open-plan kitchen diner with utility room, light and bright living room and handy separate study. 4 spacious bedrooms with an en-suite to the master bedroom.

www.anwylhomes.co.uk





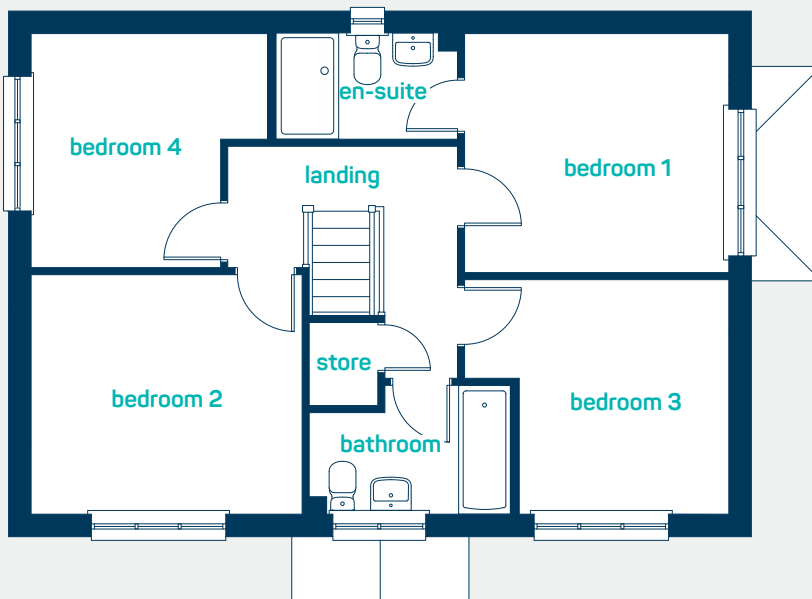
providing space for the whole family



ground floor

kitchen-dining	21'1" x 11'9"
utility room	6'5" x 6'3"
living room (into bay)	14'2" x 13'9"
study	11'7" x 7'1"
cloaks	6'5" x 3'0"

kitchen-dining	6.42m x 3.57m
utility room	1.95m x 1.90m
living room (into bay)	4.31m x 4.18m
study	3.53m x 2.15m
cloaks	1.95m x 0.92m



first floor

bedroom 1	11'7" x 10'6"
en-suite	8'0" x 4'7"
bedroom 2	11'11" x 10'6"
bedroom 3	11'7" x 10'3"
bedroom 4	10'4" x 10'3"
bathroom	8'11" x 5'7"

bedroom 1	3.53m x 3.19m
en-suite	2.44m x 1.40m
bedroom 2	3.63m x 3.21m
bedroom 3	3.53m x 3.13m
bedroom 4	3.16m x 3.13m
bathroom	2.71m x 1.71m

the evesham
4 bed detached

ANWYL
thoughtful homes

NEW HOMES QUALITY CODE

NEW HOMES SERVICE OMBUDSMAN

www.anwyllhomes.co.uk

Anwyll Homes is a Registered Developer with the NHQB. This is a computer-generated image of the evesham, elevation treatment may vary. Room sizes are approximate, dimensions are taken from the longest room point (please consult homes advisor for measurement points). Plots may be handed and any garages may be single or double. Kitchen and bathroom layouts are indicative. These plans are correct at the time of going to press, but may be subject to change during construction. Please ensure that you check for specific plot details. 01/11/22.

everything considered.

ANWYL
thoughtful homes

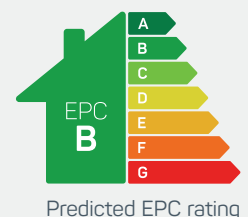


the henley

4 bed detached with garage

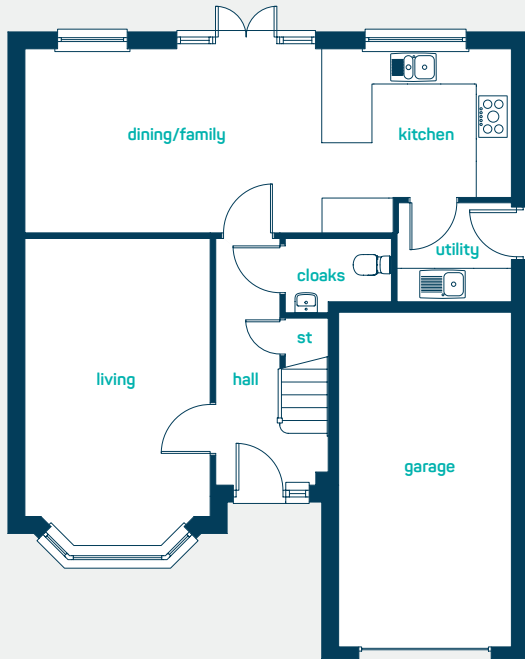
A *traditional* 4 bedroom detached home. Designed to capture the essence of traditional house building with lovely high ceilings, beautiful bay windows and a roofed porch. Step inside and the henley is thoughtfully designed for modern family life with open plan family space, separate living room and generously sized bedrooms on offer.

www.anwylhomes.co.uk



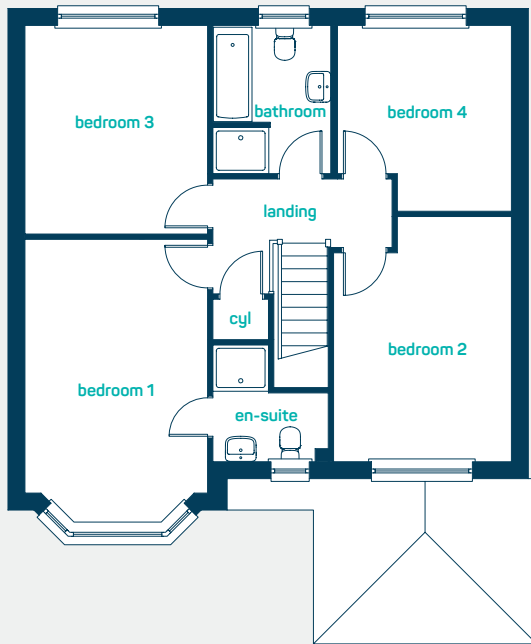


Large open plan
family space



ground floor

kitchen/dining/ family	28'6" x 11"
utility	7'7" x 5'10"
living room	17'8" x 10'9"
cloaks	5'1" x 4"
kitchen/dining/ family	8.67m x 3.35m
utility	2.3m x 1.76m
living room	5.38m x 3.27m
cloaks	1.54m x 1.21m



first floor

bedroom 1	16'9" x 10'8"
en-suite	6'9" x 6'9"
bedroom 2	14'9" x 10'5"
bedroom 3	12'2" x 10'8"
bedroom 4	10'6" x 10'2"
bathroom	8'6" x 6'11"
bedroom 1	5.09m x 3.25m
en-suite	2.07m x 2.07m
bedroom 2	4.49m x 3.16m
bedroom 3	3.72m x 3.25m
bedroom 4	3.19m x 3.09m
bathroom	2.60m x 2.11m

the henley
4 bed detached with garage

ANWYL
thoughtful homes

**NEW
HOMES
QUALITY
CODE**

**NEW HOMES
OMBUDSMAN
SERVICE**

www.anwylhomes.co.uk

Anwyl Homes is a Registered Developer with the NHQB. This is a computer-generated image of the henley, elevation treatment may vary. Room sizes are approximate, dimensions are taken from the longest room point (please consult homes advisor for measurement points). Plots may be handed and any garages may be single or double. Kitchen and bathroom layouts are indicative. These plans are correct at the time of going to press, but may be subject to change during construction. Please ensure that you check for specific plot details. 01/11/22 (grand version).

everything considered.

got questions?
call 01244 445 178



Email: devagreen@anwyl.co.uk
Clifton Drive, Chester, CH1 4LG

www.anwylhomes.co.uk

everything considered.