

Nether Kellet

Offers in Region of **£330,000**

4 Grange View Road, Nether Kellet, LA6 1ED

Nestled within the picturesque village of Nether Kellet, this beautifully presented semi-detached dormer bungalow offers fantastic countryside views extending towards Morecambe Bay and The Lake District.

Set on an impressive plot within a quiet cul-de-sac, this property combines tranquil living with convenient access to local amenities and excellent transport links, including bus routes, Carnforth train station, and the M6 motorway.

Quick Overview

- Two/Three Bedroom Dormer Bungalow
- Recently Renovated Throughout
- Picturesque Sea and Fell Views
- Located in the Sought After Village of Nether Kellet
- Well Maintained Wrap Around Garden
- Ample Off Street Parking and Garage
- Array of Walks on your Doorstep
- Nearby Bus and M6 Links
- Quiet Residential Location
- Ultrafast Broadband Available*



3



1



1



TBC



Ultrafast
Broadband



Driveway &
Garage

Property Reference: C2489



Living Room



Living Room



Kitchen



Kitchen Diner

Thoughtfully modernised and reconfigured by the current owners, this versatile home is ideal for families or those seeking to downsize. Featuring two bedrooms on the first floor, complemented by an additional ground-floor bedroom or reception room.

The welcoming entrance porch provides practical storage space, perfect for coats and shoes, before leading into the central hallway. To the left, a bright and inviting living room awaits, complete with a large front-facing window that floods the space with natural light. A charming log-burning stove serves as the centrepiece, creating a cosy and comfortable atmosphere with ample space for your furnishings.

The heart of the home is the modern, open-plan kitchen dining area. Designed for both style and functionality, this space boasts an array of base and wall units, an integrated fridge-freezer, a classic Belfast sink, and provisions for a washing machine and oven, with the added benefit of underfloor heating. The addition of bi-fold doors seamlessly connects the interior to the beautiful rear garden, offering a perfect blend of indoor-outdoor living.

Adjacent to the kitchen, the versatile third bedroom offers the flexibility to accommodate your lifestyle needs. Whether utilised as a home office, hobby room, or occasional guest bedroom, this well-proportioned space has been thoughtfully enhanced with patio doors that open directly onto the garden, filling the room with natural light. There's ample room to comfortably accommodate a double bed along with additional furniture, making it a highly adaptable space.

The bathroom has been carefully reconfigured to maximise space and functionality. Featuring a newly fitted, modern suite, it includes a toilet, vanity sink, bath with an overhead shower, and a heated towel rail complete with tiled surrounds.

To the first floor, the landing offers two practical storage cupboards, one of which houses the boiler, ensuring an organised and efficient layout. Both bedrooms on this level are generously sized doubles, providing a blank canvas for you to infuse your personal style.

The first bedroom features built-in wardrobe space for added convenience, while the second bedroom boasts spectacular views of the surrounding countryside.

For added practicality, the first floor includes a well-appointed W.C., featuring a toilet and pedestal sink. The space is tastefully finished with classic tongue-and-groove panelling and wood-effect flooring.

Externally, the property boasts beautifully maintained gardens to the front, side, and rear, primarily laid to lawn and framed with mature shrub borders. The rear garden is a true highlight, featuring a paved patio area that provides the perfect setting for outdoor seating and entertainment. From here, you can take in the uninterrupted views of the countryside, with the sea of Morecambe Bay and the Lakeland fells completing the backdrop.

The front elevation offers off-street parking for two vehicles, with the potential to extend for additional parking if needed. The property also includes an attached garage with an up-and-over door, complete with power and lighting, providing ample storage or workspace options.



Kitchen Diner



Bedroom Three



Bedroom Three



Bathroom



First Floor W.C.



Bedroom One

Accommodation with approximate dimensions

Entrance Porch

Living Room 17' 5" x 11' 7" (5.31m x 3.53m)

Kitchen Dining Room 10' 10" x 17' 6" (3.3m x 5.33m)

Bathroom

Bedroom One 11' 11" x 11' 6" (3.63m x 3.51m)

Bedroom Two 8' 11" x 11' 6" (2.72m x 3.51m)

First Floor W.C.

Bedroom Three/Office 17' 2" x 8' 5" (5.23m x 2.57m)

Garage 12' 10" x 8' 5" (3.91m x 2.57m)

Property Information

Tenure Freehold

Council Tax Band D

Services Mains gas, electricity, water and drainage. Ultrafast broadband available.

Energy Performance Certificate Energy Rating TBC. The full Energy Performance Certificate is available on our website and also at any of our offices.

Directions From the Hackney & Leigh office in Carnforth, proceed straight up Market Street, go straight over the traffic lights and follow that road out of Carnforth. Pass the High School on your left, and the turning to Fairfield Close, take the next right onto Back Lane (signposted to Nether Kellet). Proceed up that road for just over a mile until the T Junction, turn left then take the first left onto Laithbutts Lane and left again into Grange View Road where you will find the property located on your right hand side.

What3Words ///await.clerics.fattening

Viewings Strictly by appointment with Hackney & Leigh Carnforth Office.

Anti-Money Laundering Regulations (AML) Please note that when an offer is accepted on a property, we must follow government legislation and carry out identification checks on all buyers under the Anti-Money Laundering Regulations (AML). We use a specialist third-party company to carry out these checks at a charge of £42.67 (incl. VAT) per individual or £36.19 (incl. vat) per individual, if more than one person is involved in the purchase (provided all individuals pay in one transaction). The charge is non-refundable, and you will be unable to proceed with the purchase of the property until these checks have been completed. In the event the property is being purchased in the name of a company, the charge will be £120 (incl. vat).



Bedroom Two



Garden



Views



Views

Request a Viewing Online or Call 01524 737727

Meet the Team

Laura Hizzard

Property Marketing Consultant

Tel: 01524 737727
Mobile: 07464 545687
laurahizzard@hackney-leigh.co.uk



Keira Brown

Sales Team

Tel: 01524 737727
carnforthsales@hackney-leigh.co.uk



Kirsty Roberts

Sales Team

Tel: 01524 737727
carnforthsales@hackney-leigh.co.uk



Alan Yates

Viewing Team

Tel: 01524 737727
carnforthsales@hackney-leigh.co.uk



Jo Thompson

Lettings Manager

Tel: 01539 792035
Mobile: 07779 771146
jonthompson@hackney-leigh.co.uk



Viewings available 7 days a week including evenings with our dedicated viewing team
Call **01524 737727** or request online.



Need help with **conveyancing**? Call us on: **01539 792032**

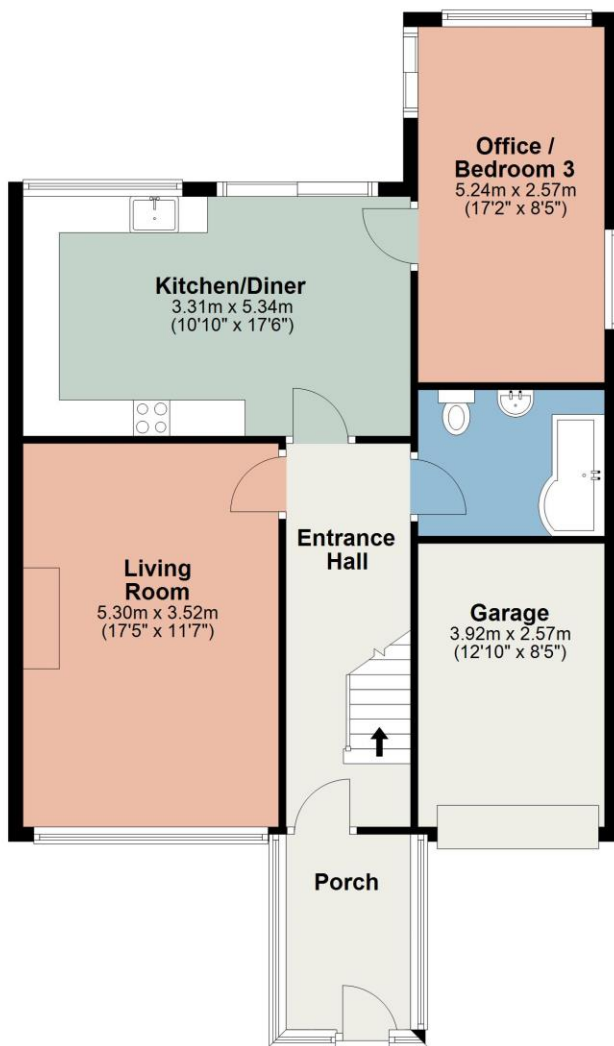


Can we save you money on your **mortgage**? Call us on: **01539 792033**

Hackney & Leigh Ltd Market Street, Carnforth, Lancashire, LA5 9BT | Email: carnforthsales@hackney-leigh.co.uk

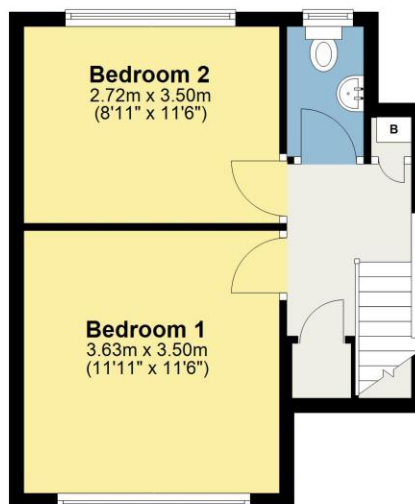
Ground Floor

Approx. 82.3 sq. metres (885.8 sq. feet)



First Floor

Approx. 31.1 sq. metres (334.5 sq. feet)



Total area: approx. 113.4 sq. metres (1220.3 sq. feet)

All permits to view and particulars are issued on the understanding that negotiations are conducted through the agency of Messrs. Hackney & Leigh Ltd. Properties for sale by private treaty are offered subject to contract. No responsibility can be accepted for any loss or expense incurred in viewing or in the event of a property being sold, let, or withdrawn. Please contact us to confirm availability prior to travel. These particulars have been prepared for the guidance of intending buyers. No guarantee of their accuracy is given, nor do they form part of a contract. *Broadband speeds estimated and checked by <https://checker.ofcom.org.uk/en-gb/broadband-coverage> on 17/01/2025.