



# Southlands Farm, Bishop Monkton, Harrogate

Harrogate

Guide Price £2,150,000



# MYRINGS

Harrogate's Family Estate Agent





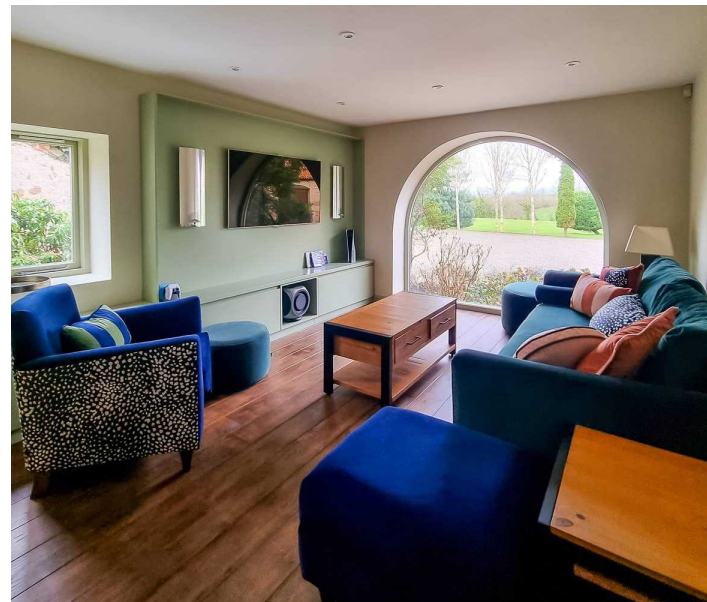
## Southlands Farm, Bishop Monkton

, Harrogate

SOUTHLANDS FARM - PART EXCHANGE CONSIDERED & NO CHAIN - 11 ACRES - SOUTH FACING GARDENS - FURNISHINGS INCLUDED - APPROX. 5,500 SQ FT - 6 BEDROOMS 5 BATHROOMS - FURTHER DEVELOPMENT POTENTIAL - TRIPLE GARAGE - HIGHLY DESIRABLE VILLAGE - RIPON GRAMMAR SCHOOL CATCHMENT  
Council Tax band: H

Tenure: Freehold

- PART EXCHANGE CONSIDERED - NO CHAIN
- FURNISHINGS INCLUDED
- 11 ACRES
- SOUTH FACING GARDENS
- RIPON GRAMMAR SCHOOL CATCHMENT
- APPROXIMATELY 5,500 SQ FT
- 6 BEDROOMS 5 BATHROOMS
- HIGHLY DESIRABLE VILLAGE LOCATION
- FURTHER DEVELOPMENT POTENTIAL



MYRINGS







# Southlands Farm, Bishop Monkton, HG3

Approximate Area = 5899 sq ft / 548 sq m (includes double garage and excludes void)

Outbuildings = 406 sq ft / 37.7 sq m

Total = 6305 sq ft / 585.7 sq m

For identification only - Not to scale

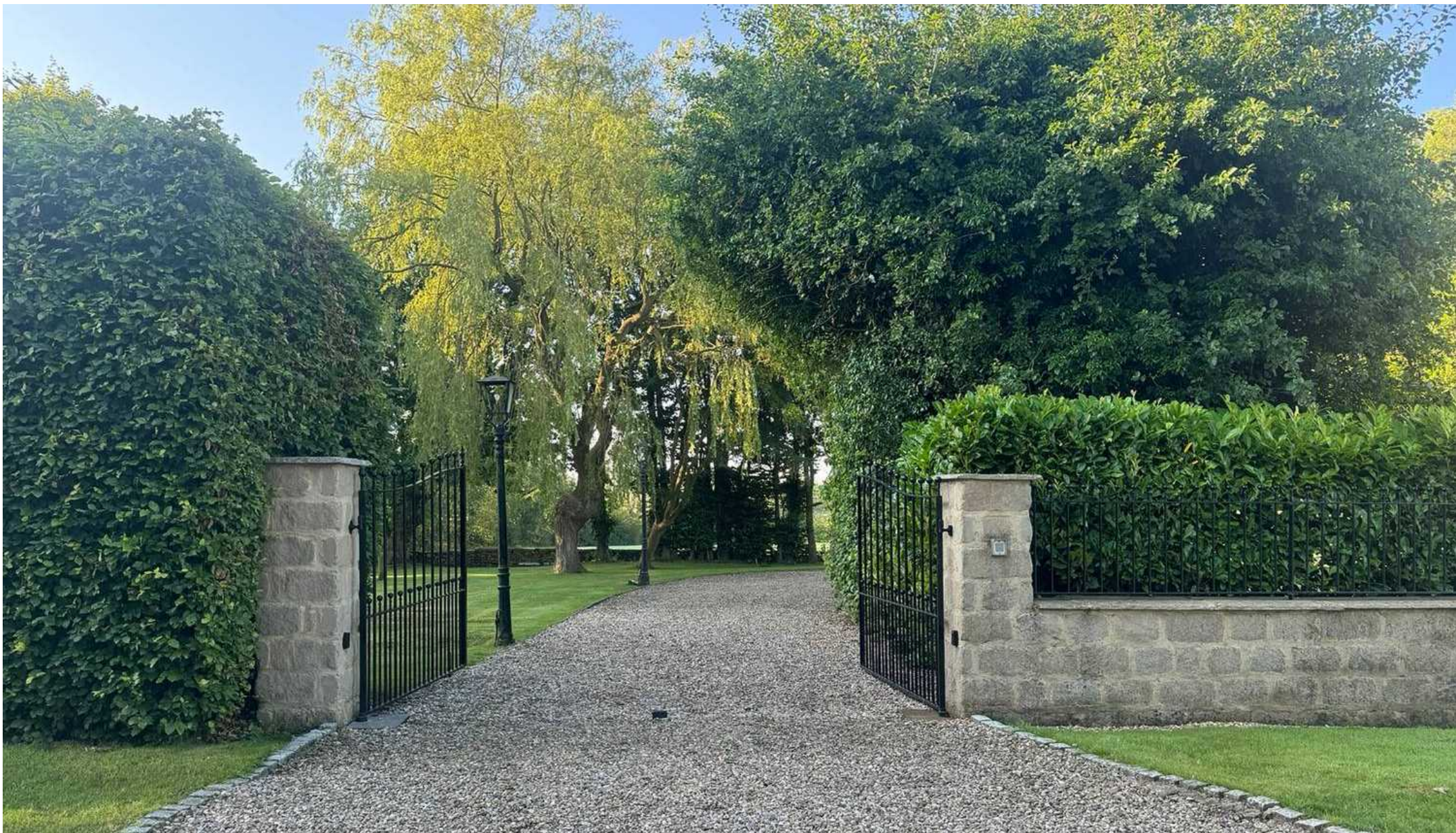


Floor plan produced in accordance with RICS Property Measurement Standards incorporating International Property Measurement Standards (IPMS2 Residential). © nichecom 2023. Produced for Myrings. REF: 1042051









## Myrings Estate Agents

Myrings Estate Agents Ltd, 10 Princes Square - HG1 1LX

01423  
566400

• [enquiries@myringsestateagents.com](mailto:enquiries@myringsestateagents.com) • <http://myringsestateagents.com/>

