



37 Drove Road, Portslade

Guide Price **£475,000** - Freehold

**MANSELL
McTAGGART**
Trusted since 1947



Mansell McTaggart Hove

9 Albert Road, Brighton, BN1 3RL

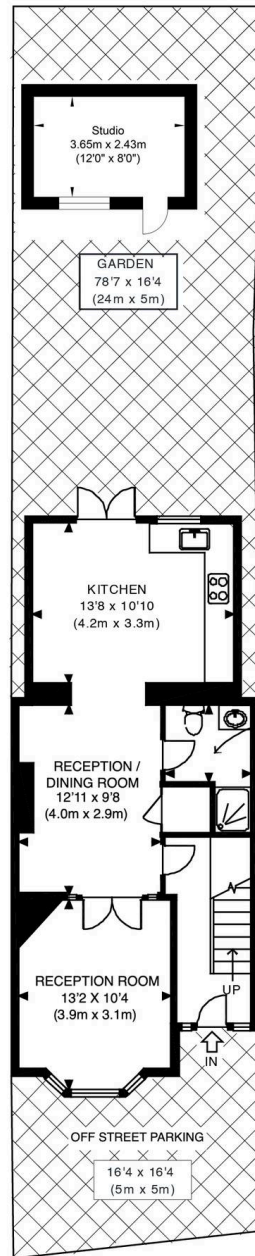
01273 569233

russellchilvers@mansellmctaggart.co.uk

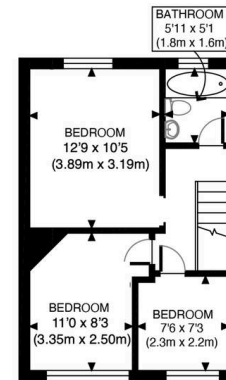
www.mansellmctaggart.co.uk/branch/hove/



**MANSELL
McTAGGART**
ESTATE AGENTS SINCE 1947



GROUND FLOOR



FIRST FLOOR

APPROX. GROSS INTERNAL FLOOR AREA 951 SQ FT / 88.0 SQ MT'S.
PLUS 96 SQ FT / 8.91 SQ MT'S STUDIO

APPROX. GROSS INTERNAL FLOOR AREA 951 SQ FT / 88.0 SQ MT'S.
Disclaimer: Floor plan measurements are approximate and are for illustrative purposes only.
While we do not doubt the floor plan accuracy and completeness, you or your advisors should
conduct a careful, independent investigation of the property in respect of monetary valuation

Drove Road

date 14/12/23



37 Drove Road

Portslade Village

A beautiful three bedroom period cottage in the heart of Portslade Village which features a large 78ft. private rear garden, off street parking and large entertaining spaces whilst being presented in excellent condition throughout with warmth and charm.

Council Tax band: C

Tenure: Freehold

- Three bedroom period home
- Large 78ft. private rear garden with gate access
- Off street parking
- Two bathrooms
- No onward chain
- Beautifully presented throughout
- Brand new kitchen
- Scope for upwards and outwards extension (subject to the usual consents)
- Located in beautiful Portslade Village
- Outdoor studio and shed in the garden

