



Finch Way, Brundall - NR13 5NB



Finch Way

Brundall, Norwich

NO CHAIN. With an UPDATED and MODERNISED INTERIOR, close to 850 Sq. ft (stms) of accommodation can be found within, whilst occupying a SOUTH FACING PLOT with GREEN SPACE to the rear. Residents parking can be found adjacent, with the added benefit of an EN BLOC GARAGE. Finished with gas fired CENTRAL HEATING and uPVC DOUBLE GLAZING, the accommodation comprises a HALL ENTRTANCE with STORAGE, re-fitted and TILED W.C, replacement KITCHEN with attractive HIGH GLOSS UNITS and the large 19' L-SHAPED SITTING/DINING ROOM encompassing BUILT-IN STORAGE and FRENCH DOORS to the rear. Upstairs, THREE SPACIOUS BEDROOMS lead off the landing, two with BUILT-IN WARDROBES, along with the REPLACEMENT SHOWER ROOM.

Council Tax band: B

Tenure: Freehold

EPC Energy Efficiency Rating: TBC



- No Chain!
- End-Terrace Family Home
- Close to 850 Sq. ft (stms)
- South Facing Gardens
- Backing onto Green Space
- Residents Parking & En Bloc Garage
- Updated & Modernised Interior
- Re-fitted Kitchen & Shower Room

The property is situated at the centre of the Broadland Village of Brundall. Located East of the City, excellent transport links via Road and Rail can be enjoyed. The Village itself has an abundance of amenities including the Train station, Village Shops, Post Office, Primary School, Doctors' Surgery, Dentist Surgery, Library and Public Houses. The property is close to the A47, and within a short walk of the local Co-op food store.

SETTING THE SCENE

Siding onto the road, low maintenance shingle gardens can be found to the front and side, with a further raised garden bisected by the main pathway leading to the terrace row, which offers a range of mature shrubbery and hedging. Steps lead down to the main entrance door with a gated access to the rear garden.



THE GRAND TOUR

Heading inside, the hall entrance is finished with tiled effect flooring and a useful built-in storage cupboard with a door leading to the modernised ground floor cloakroom - with a white two piece suite and half tiled walls. The kitchen sits adjacent with a re-fitted range of high gloss white wall and base level units with a U-shape arrangement of work surfaces and space for an electric cooker and general white goods. A front facing uPVC double glazed window offers natural light, and the wall mounted gas fired central heating boiler is concealed to one corner, with tile splash-backs and under cupboard lighting running around the work surface. The main living space is open plan and finished with fitted carpet and a window with uPVC double glazed French doors onto the south facing rear garden, whilst the L-shaped design of the room allows for soft furnishings and a dining table. Stairs rise to the first floor landing with a large built-in storage cupboard sitting under.

Heading upstairs the carpeted landing includes a loft access hatch and built in airing cupboard, with doors leading to the three bedrooms - all of which are finished with fitted carpet and uPVC double glazing. The two larger bedrooms include built-in double wardrobes and the rear enjoys a south facing aspect looking over the garden and green space. Completing the property is the modernised shower room with a white three piece suite including a walk-in shower with aqua board splash backs, useful storage under the sink, heated towel rail and wood effect flooring.

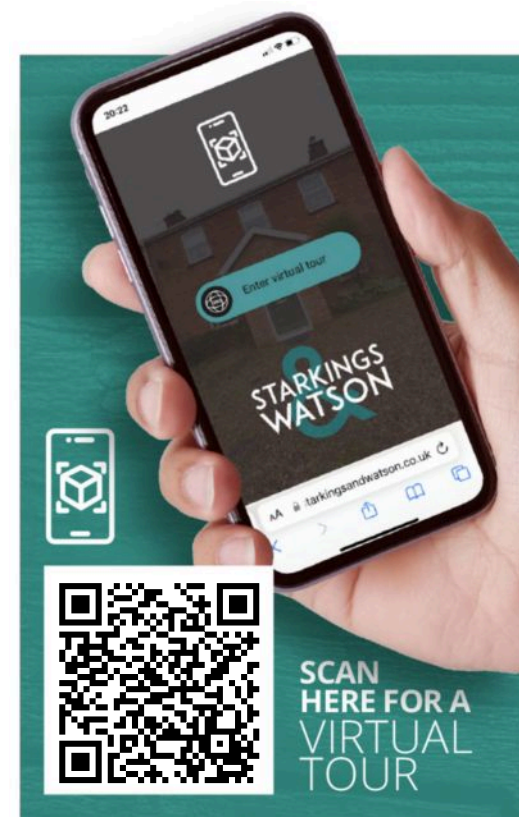
FIND US

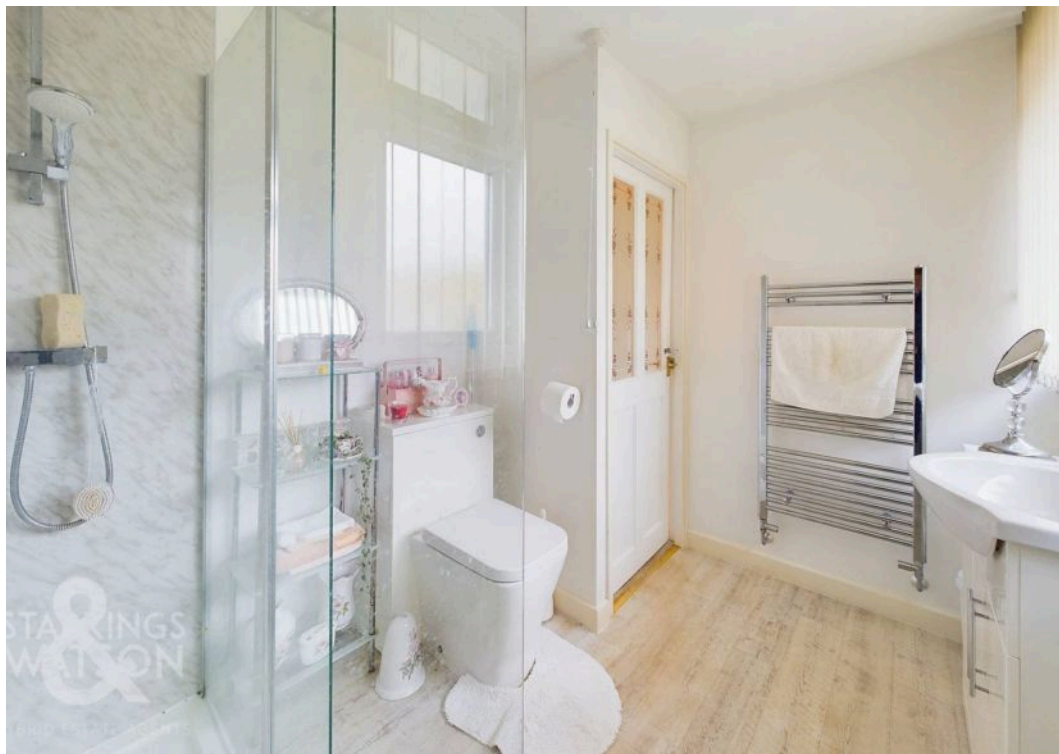
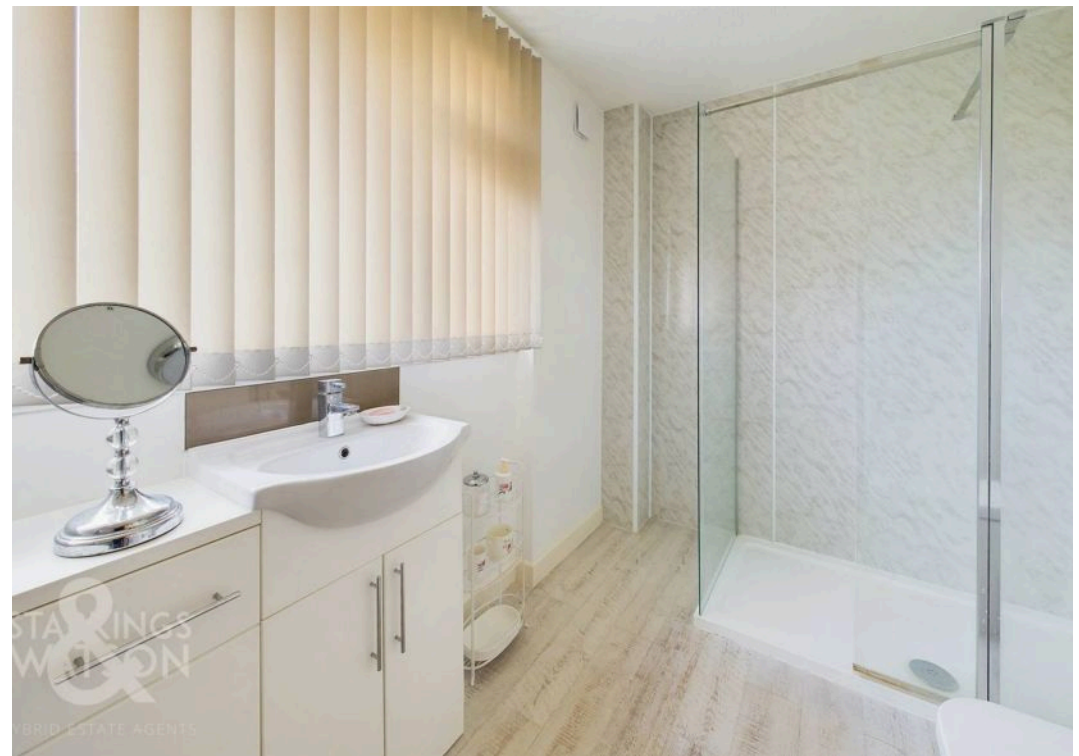
Postcode : NR13 5NB

What3Words : ///clockwork.deserved.compound

VIRTUAL TOUR

View our virtual tour for a full 360 degree of the interior of the property.



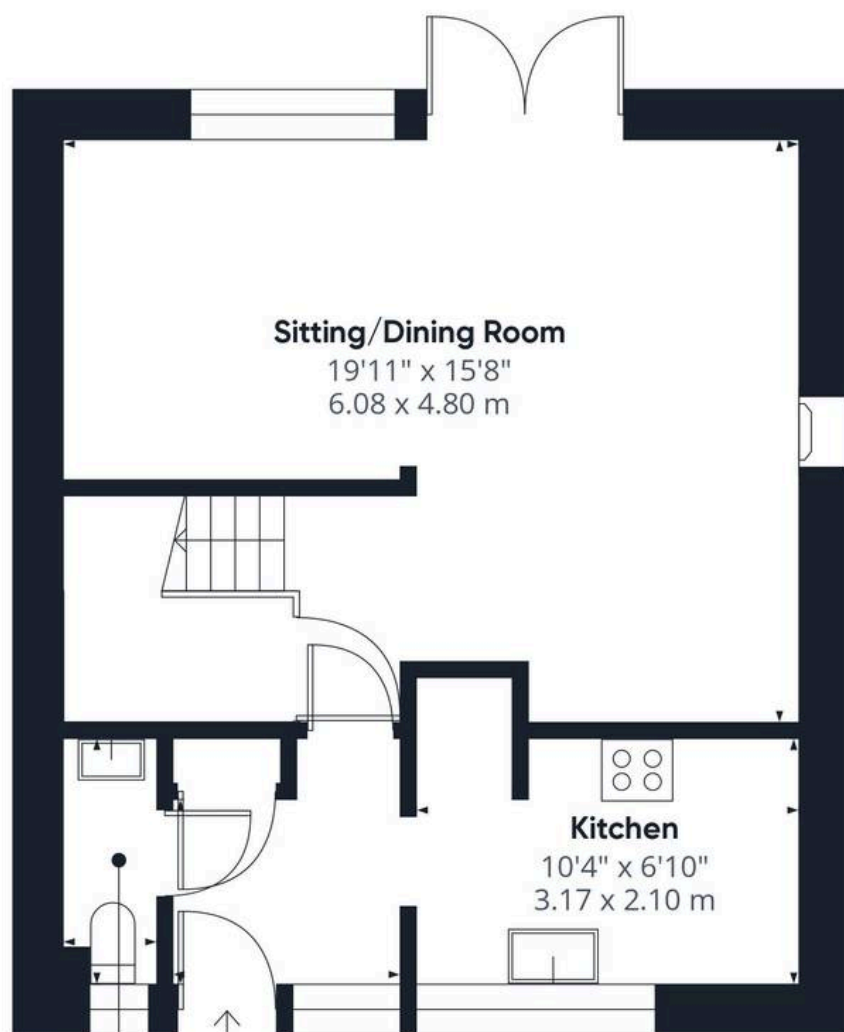




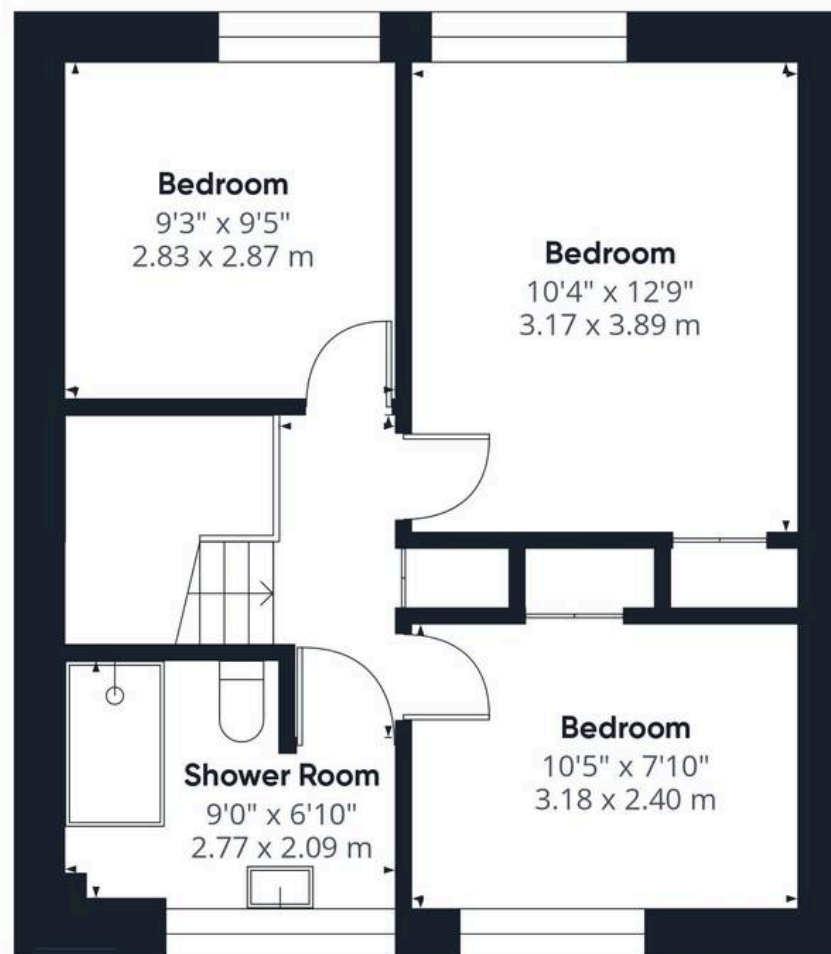
THE GREAT OUTDOORS

Heading outside the rear garden is fully enclosed with timber panel fencing whilst being laid to lawn and split level. A raised patio seating area leads from the rear French doors. A gated access leads to the side of the property with a wide variety of mature planting and shrubbery to all sides. An en bloc garage can be found within the main residents car parking area, with an up and over door.





Ground Floor



Floor 1

Approximate total area⁽¹⁾

849.82 ft²

78.95 m²

(1) Excluding balconies and terraces

While every attempt has been made to ensure accuracy, all measurements are approximate, not to scale. This floor plan is for illustrative purposes only.

Calculations are based on RICS IPMS 3C standard.

GIRAFFE360



Starkings & Watson Hybrid Estate Agents

2 Cucumber Lane, Brundall - NR13 5QY

01603 336556 • brundall@starkingsandwatson.co.uk • <http://starkingsandwatson.co.uk>

Disclaimer: Whilst every care has been taken to prepare these sales particulars, they are for guidance purposes only. All measurements are approximate and for general guidance purposes only and whilst every care has been taken to ensure their accuracy, they should not be relied upon and potential buyers are advised to recheck the measurements.