



HILLS
FOR SALE

Mayhill Drive

Salford



£320,000

Mayhill Drive

Salford

STOP!! Take a look at this RENOVATED semi-detached BUNGALOW that features TWO DOUBLE BEDROOMS, 17FT LOFT ROOM and a CELLAR!! Located on a quiet CUL-DE...
Council Tax band: C

- Gas central heated and double glazed
- No chain attached
- Spacious two bedroom bungalow located on a quiet cul-de-sac
- Cellars provide ideal storage and potential
- Large rear gardens and ample off road parking to the front for multiple cars
- Two double bedrooms, the master bedroom complete with fitted wardrobes
- Recent renovations including newly fitted kitchen, soundproofing, re wire, replastering and much more!
- Popular location close to Salford Royal Hospital and all major transport links
- 17ft converted loft space with dormer window to the rear that could be converted into a 3rd bedroom
- ****Please Note - The Photos Were Not Taken Recently - Intended as a Guide Only****



HILLS

Hallway

Dimensions: 16' 7" x 3' 10" (5.06m x 1.16m). A welcoming space with a solid wood front door, spot lights, wall mounted radiator and laminate flooring.

Lounge

Dimensions: 14' 6" x 10' 7" (4.43m x 3.22m). Double glazed window to the rear, two ceiling light point and wall-mounted radiator. Laminate flooring

Kitchen

Dimensions: 10' 8" x 8' 4" (3.25m x 2.55m). Fitted with a range of base units with complimentary quartz work surfaces and under counter stainless steel sink. Space for an integrated fridge freezer. Integrated induction hob and electric oven. Double glazed windows to the rear, ceiling light point and access to the side and garden.

Bedroom One

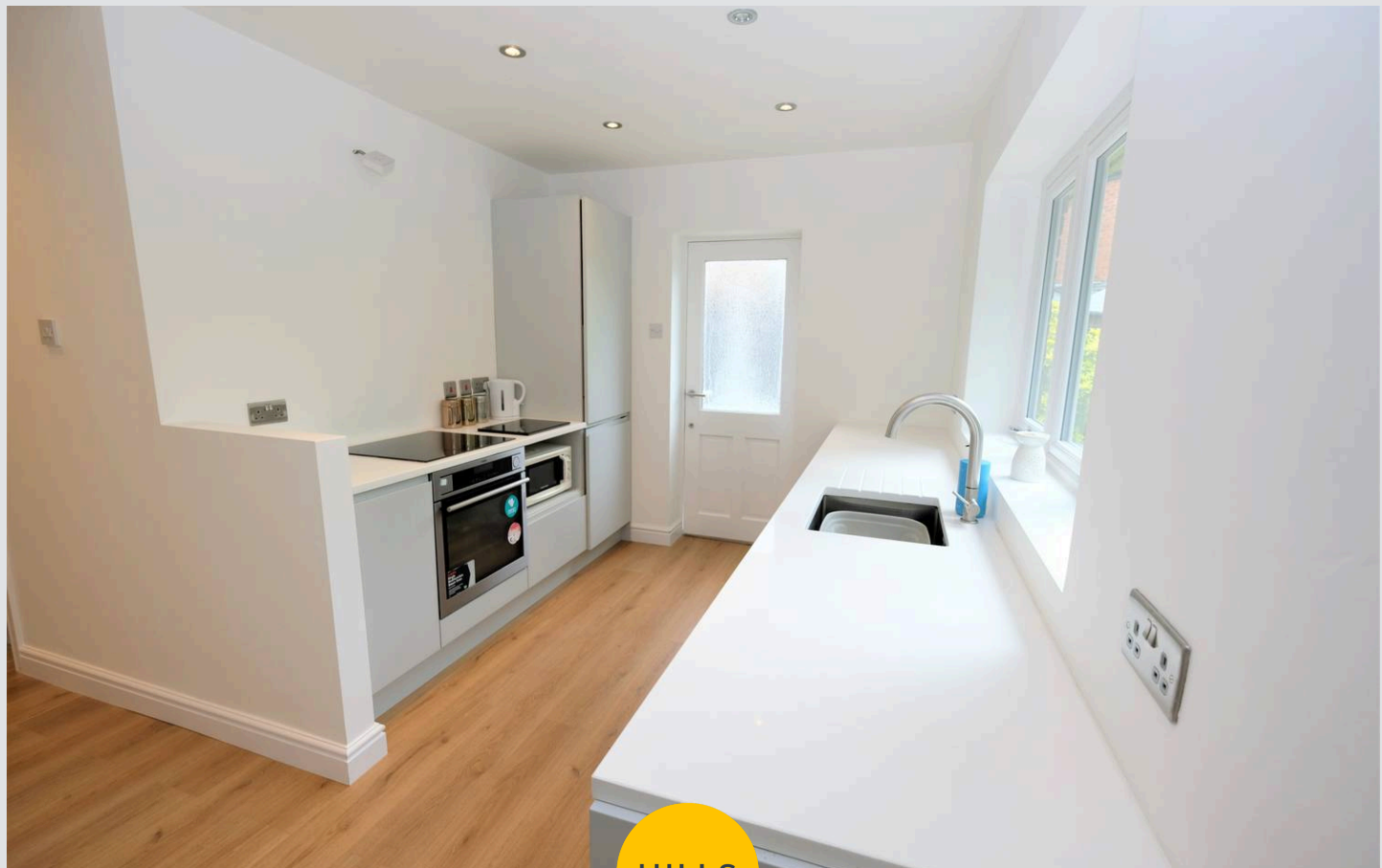
Dimensions: 12' 8" x 11' 1" (3.86m x 3.38m). Double glazed window to the front, ceiling light point, wall-mounted radiator, fitted wardrobes and carpeted floors.

Bedroom Two

Dimensions: 8' 3" x 11' 1" (2.52m x 3.39m). Double glazed window to the front, ceiling light point, wall-mounted radiator and laminate flooring.

Bathroom

Dimensions: 6' 7" x 7' 2" (2.01m x 2.18m). Fitted three piece suite comprising of low level WC, pedestal hand wash basin and Jacuzzi bath. Double glazed window to the side, ceiling light point and wall-mounted radiator. Fully limestone tiled and fitted mirror with light.



Loft Room

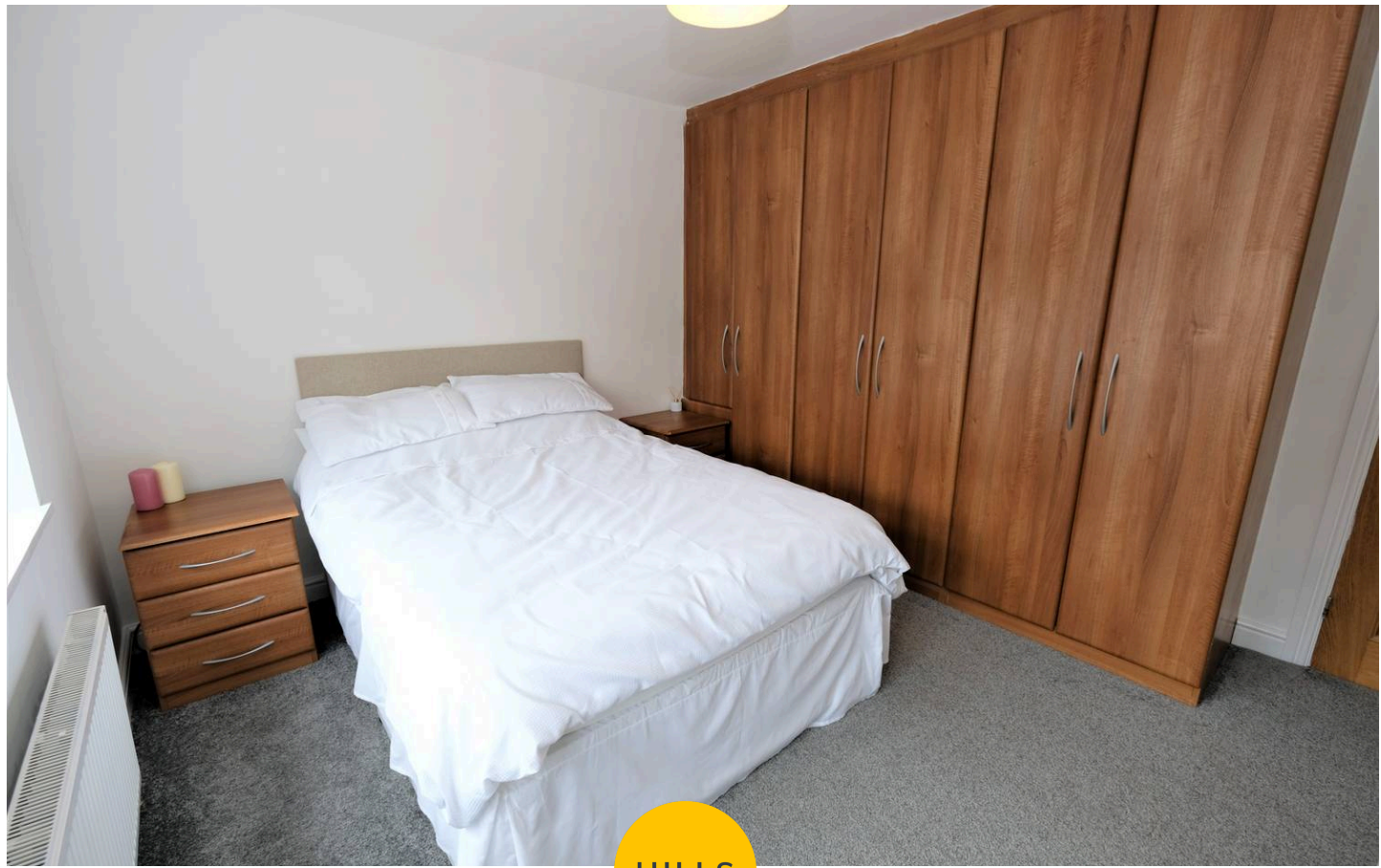
Dimensions: 11' 9" x 17' 1" (3.58m x 5.20m). Dormer window to the rear, ceiling light point, pipes for a radiator and boarded flooring. Potential for the space to be turned in to a bedroom (STPP)

Cellar

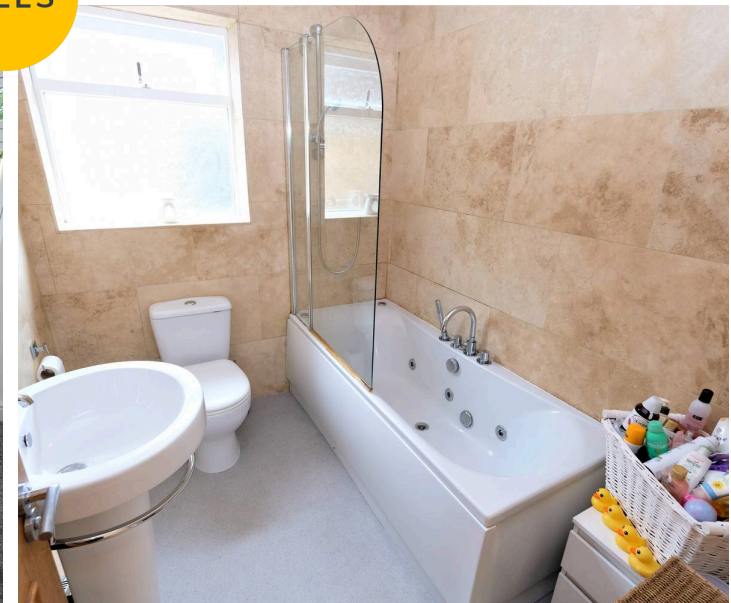
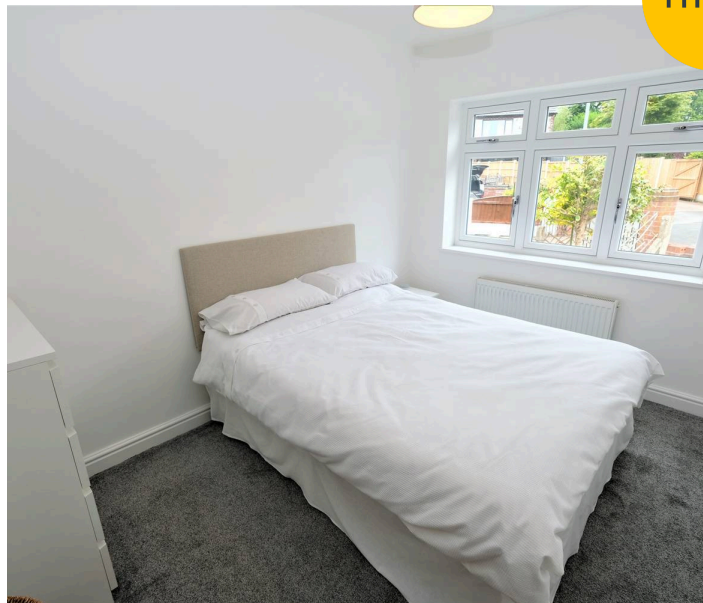
Dimensions: 9' 4" x 11' 1" (2.84m x 3.38m). Double glazed window to the rear and ceiling light point. Power and space for washing machine and dryer

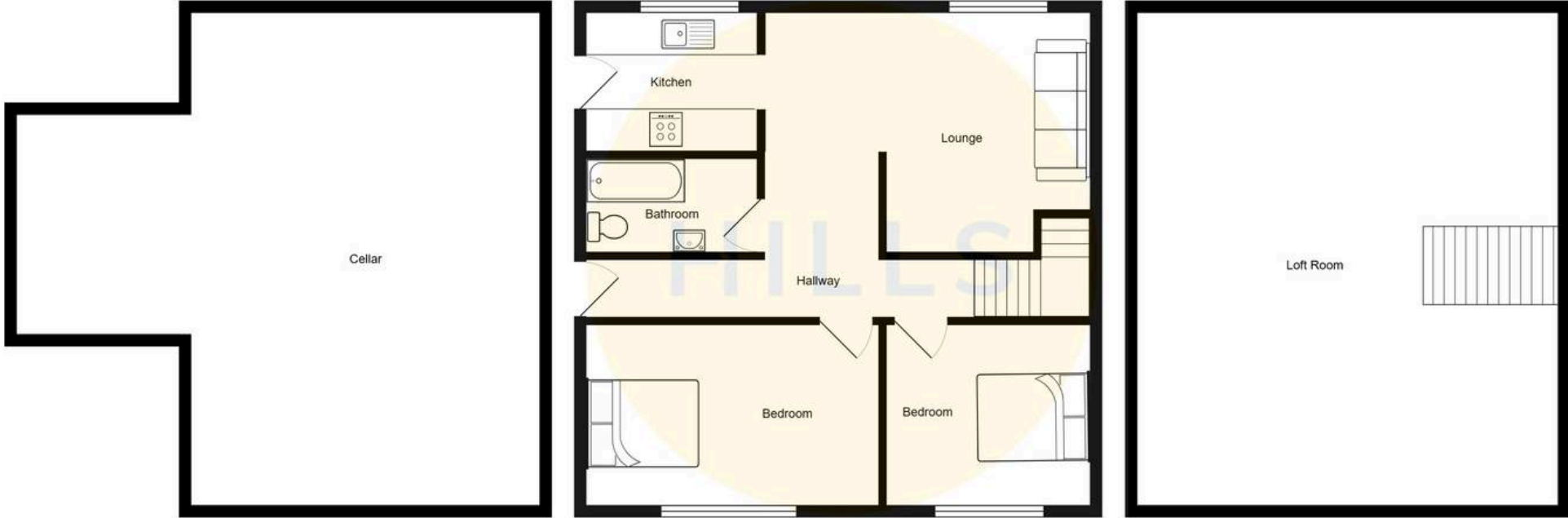
Externally

To the rear there is a patio and a multi level laid to lawn area. To the front there is a driveway providing off-road parking for two cars and gated access to the side and rear.



HILLS







Hills | Salfords Estate Agent

Hills Residential, Sentinel House Albert Street – M30 0SS

0161 707 4900

sales@hills.agency

www.hills.agency/



THE PROPERTY MISDESCRIPTIONS ACT 1991 The Agent has not tested any apparatus, equipment, fixtures and fittings or services and so cannot verify that they are in working order or fit for the purpose. A Buyer is advised to obtain verification from their Solicitor or Surveyor. References to the Tenure of a Property are based on information supplied by the Seller. The Agent has not had sight of the title documents. A Buyer is advised to obtain verification from their Solicitor. You are advised to check the availability of this property before travelling any distance to view. Every effort and precaution has been made to ensure these particulars are correct and not misleading but their accuracy is not guaranteed nor do they form part of any contract. If there is any point which is of particular importance to you, please contact us and we will provide any information you require. This is advisable, particularly if you intend to travel some distance to view the property. The mention of any appliances and services within these details does not imply that they are in full and efficient working order. These particulars are in draft form awaiting Vendors confirmation of their accuracy. These details must therefore be taken as a guide only.