



 **urbangrey**
ESTATES

27 CORNFIELD CROFT, BIRMINGHAM, B37 6TP
GUIDE PRICE £125,000





**** First Floor Flat ****

Tenant occupied 2 Bedroom Mews Flat Perfect for investors

Situated in a Prime spot close to transport links including M42, Marston Green Train Station and Birmingham Airport.

call now to arrange a viewing.

Ground Floor

Hallway

Radiator, open plan to Lounge, door to Storage cupboard housing Boiler and 2 storage cupboards.

Kitchen 3.37m (11'1") x 2.42m (7'11")

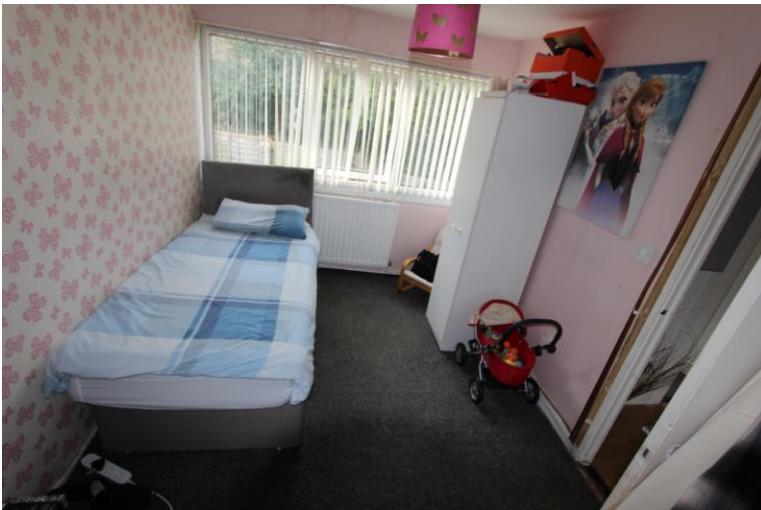
Fitted with a matching range of base and eye level units with worktop space over, sink with Drainer, double glazed window to side.



Lounge 4.35m (14'3") x 3.42m (11'3")
Double glazed window to side, radiator.



Bedroom 1 3.43m (11'3") x 3.42m (11'3")
Double glazed window to side, radiator.



Bedroom 2 3.59m (11'9") x 2.69m (8'10")
Double glazed window to side, radiator, double door to Storage cupboard.

Bathroom
Fitted with three piece suite comprising bath, wash hand basin and low-level WC, heated towel rail.

Outside space
Private Rear Garden mainly laid to lawn



Ground Floor

